

COPY

FEE BOOK: 2010 0160 1/15/2010 12:17 PM  
REC FEES: \$9.00  
PAGES: 1

Marie Krutzfield, Recorder  
Jones County, Iowa

PREPARED BY: MATTHEW W. KRAUSE, MARTIN & WHITACRE SURVEYORS & ENGINEERS,  
P.O. BOX 413, MUSCATINE, IOWA 52761 / PHONE: 563-263-7691

### UNITED STATES PUBLIC LAND SURVEY CORNER CERTIFICATE OF

Land Survey Monuments situated in Section 8, Township T85N, Range RIW, of the Fifth Principal Meridian, JONES County, Iowa.

Reason for preparing certificate:  -No Certificate on File  -Monument Type Replaced/Differs  
 -Existing Ties Inaccurate  -Differing Position Accepted

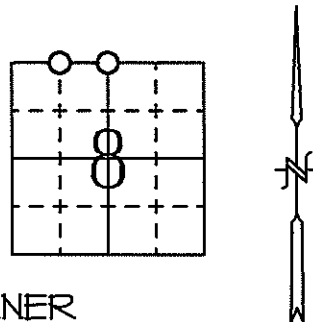
Previously recorded in N/A in County Recorder's Office.

Monument Description and Remarks: NORTHEAST CORNER OF THE NW 1/4-NW 1/4 - SET 1/2" REBAR W/ORANGE CAP #15981 18" DEEP, IN FIELD, NO CLOSE TIES, SET AT THE MIDPOINT AND ON LINE BETWEEN THE NORTHWEST AND NORTH 1/4 CORNERS.

NORTH 1/4 CORNER - SET 1/2" REBAR W/ORANGE CAP #15981 18" DEEP, IN FIELD, NO CLOSE TIES. SET AT THE MID POINT AND ON LINE BETWEEN THE NORTHEAST AND NORTHWEST CORNERS.

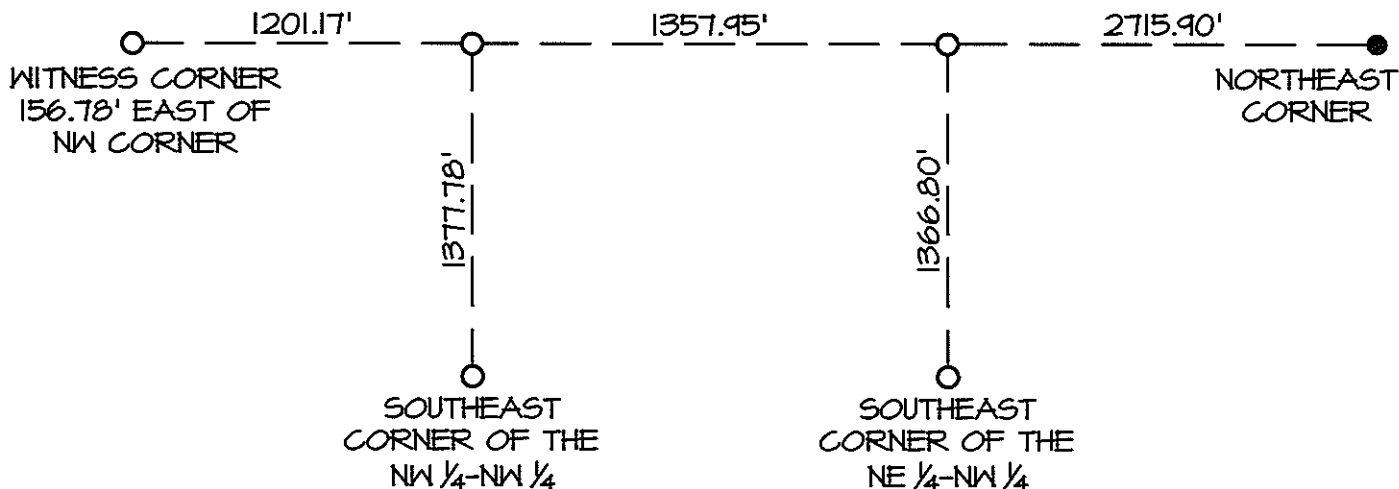
\*SEE THE NRCS EASEMENT ACQUISITION PLAT FOR THE PIERCE PROPERTY, DATED DEC 28, 2009 FOR MORE INFORMATION

#### PLAN-VIEW



NORTHEAST CORNER  
OF THE NW 1/4-NW 1/4

NORTH 1/4 CORNER



Drawn By: CCS

Date: 01/06/10

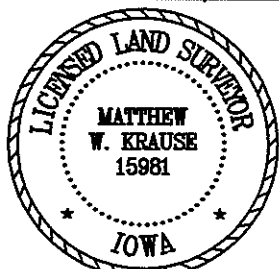
M&W: Book JONES Page 73

Job No. 7183.09

I hereby certify that the survey work was completed and this certificate was prepared by me or under my direct personal supervision and that I am a duly licensed land surveyor under the laws of the state of Iowa.

Signature: Matthew W. Krause

Date: JAN 8 2010 License No. LS15981  
My License Expires 12/31/2011.



#### List Corners to be Indexed

Corners	Section	Twp	Range
NE NW 1/4-NW 1/4	8	T85N	RIW
NW 1/4	8	T85N	RIW