

COPY

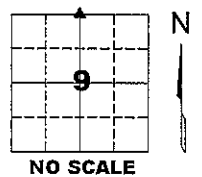
Jones County Marie Krutzfield Recorder  
 Fee Book 2012 3311  
 11/08/2012 @0216PM # Pages 1  
 ZSC SEC COR CERT  
 Total Fees: \$0.00

PREPARED BY  
 CLARENCE J. WALTON, JONES COUNTY ENGINEER'S OFFICE, 19501 HWY. 64, ANAMOSA, IOWA, 52205 (319) 462-3785

UNITED STATES PUBLIC LAND  
 SURVEY CORNER CERTIFICATE  
 LAND SURVEY MONUMENTS SITUATED IN SECTION 9, TOWNSHIP 85 NORTH,  
 RANGE 1 WEST OF THE 5TH PRINCIPAL MERIDIAN, JONES COUNTY, IOWA.

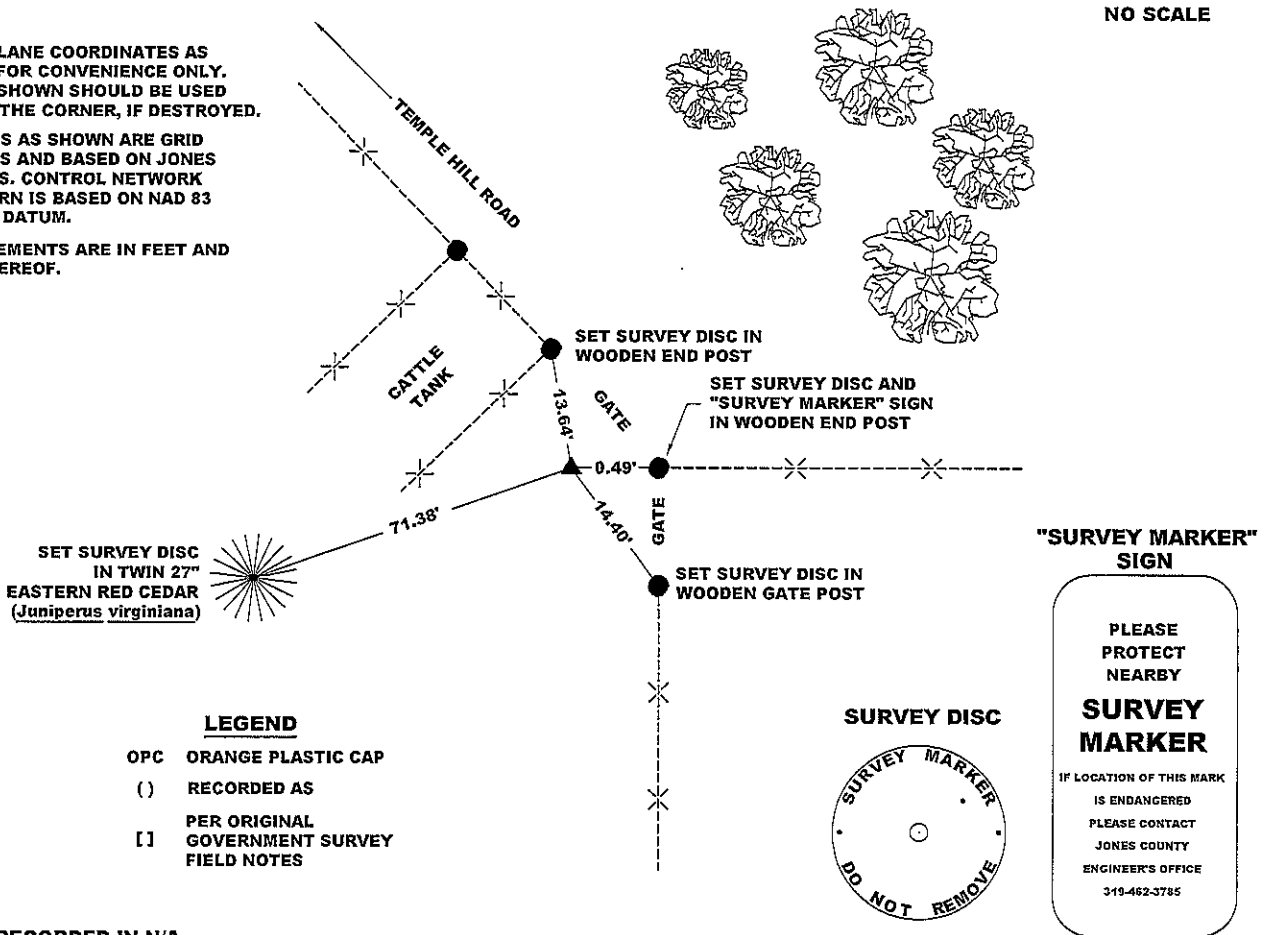
STATE PLANE COORDINATE  
 NAD 83 IOWA NORTH  
 N: 3543981.90  
 E: 5607887.23

CORNER SECTION TOWNSHIP RANGE  
 N 1/4 CORNER 9 T85N R1W



NOTES:

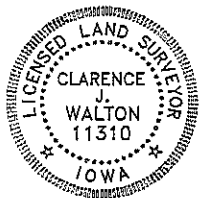
- 1) THE STATE PLANE COORDINATES AS SHOWN ARE FOR CONVENIENCE ONLY. THE TIES AS SHOWN SHOULD BE USED TO REPLACE THE CORNER, IF DESTROYED.
- 2) COORDINATES AS SHOWN ARE GRID COORDINATES AND BASED ON JONES COUNTY G.P.S. CONTROL NETWORK WHICH IN TURN IS BASED ON NAD 83 IOWA NORTH DATUM.
- 3) ALL MEASUREMENTS ARE IN FEET AND DECIMALS THEREOF.



PREVIOUSLY RECORDED IN N/A

MONUMENT DESCRIPTION AND HOW ESTABLISHED SET 5/8" X 24" REBAR WITH ORANGE PLASTIC CAP #11310 FLUSH WITH EXISTING GROUND SURFACE NEXT TO WOODEN END POST WITH FENCES RUNNING EAST AND SOUTH. DISTANCE TO FENCE CORNER TO EAST IS 1320.48' AND THENCE 1317.11' TO WHERE WE ASCERTAINED THE NE CORNER OF SECTION 9-T85N-R1W) WILL BE SET SOMETIME IN THE FUTURE. NO OTHER EVIDENCE PRESENTED ITSELF AS TO WHERE THIS CORNER WAS ORIGINALLY SET. MORE CORNERS ARE PLANNED TO BE SET IN SECTION 9 IN THE FUTURE THAT WILL TIE THE ENTIRE SECTION TOGETHER.

FIELD BOOK 344, PAGE 67. DATE OF SURVEY: 4/30/10



I hereby certify that this land surveying document and the related survey work was performed by me or under my direct personal supervision and that I am a duly registered Land Surveyor under the laws of the State of Iowa.

Signed: *Clarence J. Walton* 11/8/12  
 Clarence J. Walton, L.S.  
 My Registration Renewal Date is December 31, 2013  
 Iowa License Number 11310  
 Pages or sheets covered by this seal: 1 of 1.

- A. THERE IS NO CERTIFICATE FOR THE CORNER ON FILE WITH THE RECORDER OF THE COUNTY IN WHICH THE CORNER IS LOCATED.
- B. THE CORNER MONUMENT HAS BEEN REPLACED OR MODIFIED.
- C. THE SURVEYOR IN RESPONSIBLE CHARGE OF THE LAND SURVEYING ACCEPTS A CORNER POSITION THAT DIFFERS FROM THAT SHOWN IN THE PUBLIC RECORDS OF THE COUNTY IN WHICH THE CORNER IS LOCATED.
- D. THE REFERENCE TIES REFERRED TO IN AN EXISTING PUBLIC RECORD NO LONGER EXIST.
- E. EXISTING CORNER TIES UPDATED.

CORNERS TO BE INDEXED

CORNER	SECTION	TOWNSHIP	RANGE
N 1/4 CORNER	9	85N	1W
S 1/4 CORNER	4	85N	1W

JONES COUNTY ENGINEER'S OFFICE



19501 HWY. 64, ANAMOSA, IOWA 52205  
 (319) 462-3785