

2006 3234  
 FILED  
 RECORDERS OFFICE  
 JONES COUNTY IOWA

05 AUG 25 AM 10:05

LAURIE KRUTZFIELD  
 RECORDER *No Fee*

J.D. Tjepkes, LS. JONES COUNTY ENGINEER'S OFFICE, 19501 HWY. 64, ANAMOSA, IOWA, 52205 (319)462-3785

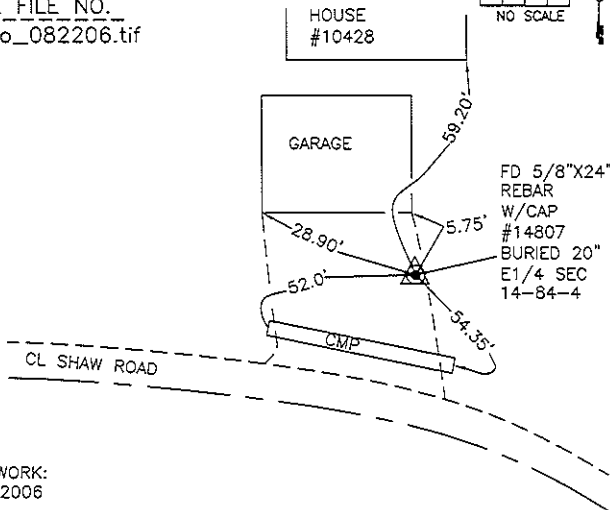
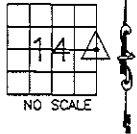
# UNITED STATES PUBLIC LAND SURVEY CORNER CERTIFICATE

LAND SURVEY MONUMENTS SITUATED IN SECTION 14, TOWNSHIP 84  
 NORTH, RANGE 4 WEST OF THE 5TH P.M., JONES COUNTY, IOWA

**CORNERS TO BE INDEXED**

CORNER SECTION TOWNSHIP RANGE  
 E1/4 14 84N 4W

OFFICE FILE NO.  
 84414o\_082206.tif



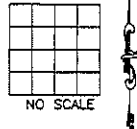
FIELD WORK:  
 8-22-2006

PREVIOUSLY RECORDED IN BOOK 2001, PAGE 0359  
 MONUMENT DESCRIPTION AND HOW ESTABLISHED \_\_\_\_\_  
 PER TIES ON RECORD AT JONES COUNTY RECORDER'S OFFICE IN BOOK  
 2001 PAGE 0359, FOUND 5/8"X24" REBAR W/CAP #14807 BURIED 20" IN  
 DRIVEWAY. NEW GARAGE HAS BEEN BUILT AND TREES REMOVED. NEW TIES  
 AS INDICATED FOR EAST 1/4 CORNER SECTION 14 T84N R4W.

**CORNERS TO BE INDEXED**

CORNER SECTION TOWNSHIP RANGE

OFFICE FILE NO. \_\_\_\_\_

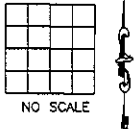


PREVIOUSLY RECORDED IN BOOK \_\_\_\_\_, PAGE \_\_\_\_\_  
 MONUMENT DESCRIPTION AND HOW ESTABLISHED \_\_\_\_\_

**CORNERS TO BE INDEXED**

CORNER SECTION TOWNSHIP RANGE

OFFICE FILE NO. \_\_\_\_\_

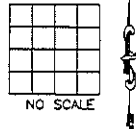


PREVIOUSLY RECORDED IN BOOK \_\_\_\_\_, PAGE \_\_\_\_\_  
 MONUMENT DESCRIPTION AND HOW ESTABLISHED \_\_\_\_\_

**CORNERS TO BE INDEXED**

CORNER SECTION TOWNSHIP RANGE

OFFICE FILE NO. \_\_\_\_\_



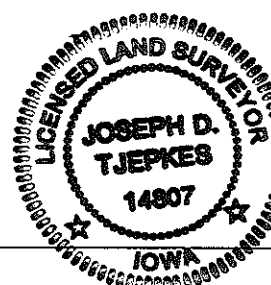
PREVIOUSLY RECORDED IN BOOK \_\_\_\_\_, PAGE \_\_\_\_\_  
 MONUMENT DESCRIPTION AND HOW ESTABLISHED \_\_\_\_\_

I hereby declare that this plat, survey or report was made by me or under my direct personal supervision and that I am a duly registered Land Surveyor under the laws of the State of Iowa.

Signed:  8-24-06

Joseph D. Tjepkes L.S. Iowa Reg. No. 14807  
 My Registration Renewal Date is December 31, 2006

SEAL



J.D. TJEPKES LS 14807  
 JONES COUNTY  
 ENGINEER'S OFFICE

19501 HWY. 64,  
 ANAMOSA, IOWA,  
 52205 (319)462-3785

2001 0359  
 FILED  
 RECORDERS OFFICE  
 JONES COUNTY IOWA  
 01 FEB -6 PM 1:52  
 MARIE KRUTZFIELD  
 RECORDER No Fee

J.D. TJEPKES, L.S. JONES COUNTY ENGINEER'S OFFICE, 19501 HWY. 64, ANAMOSA, IOWA, 52205 (319)462-3785

# UNITED STATES PUBLIC LAND SURVEY CORNER CERTIFICATE

LAND SURVEY MONUMENTS SITUATED IN SECTION 13, TOWNSHIP 84  
 NORTH, RANGE 4 WEST OF THE 5TH P.M., JONES COUNTY, IOWA

**CORNERS TO BE INDEXED**

CORNER	SECTION	TOWNSHIP	RANGE
WEST QUARTER	13	84N	4W

SET PLASTIC SURVEY DISK IN 18" COTTONWOOD  
 SET PLASTIC SURVEY DISK IN 8" COTTONWOOD  
 HOUSE #10428  
 SET 5/8"X24' REBAR W/CAP LS 14807 W-1/4 13 84-4  
 FD. #4 RBR. PI ROAD  
 FD. #4 REBARS  
 NW COR. LOT 6  
 FD. RBR. W/YELLOW CAP LS 11310  
 SHAW ROAD CENTERLINE  
 R.O.W.  
 H=84.04'  
 ALL DISTANCES ARE SLOPE UNLESS OTHERWISE INDICATED

PREVIOUSLY RECORDED IN BOOK N/A, PAGE N/A  
 MONUMENT DESCRIPTION AND HOW ESTABLISHED SET #5 REBAR WITH YELLOW CAP LS 14807 IN PRIVATE YARD PER LEAD MINE ADDITION PLAT AS PLATTED BY BRAIN ENGINEERING OF CEDAR RAPIDS USED FOUND PINS AS INDICATED, TIED CORNER REFERENCE POINTS AS INDICATED. W-1/4 COR. 13-84-4, JONES COUNTY, IOWA

**CORNERS TO BE INDEXED**

CORNER	SECTION	TOWNSHIP	RANGE
NE COR. LOT 6, FD. RBR. W/YELLOW CAP LS 11310			

NE COR. LOT 6, FD. RBR. W/YELLOW CAP LS 11310

PREVIOUSLY RECORDED IN BOOK \_\_\_\_\_, PAGE \_\_\_\_\_  
 MONUMENT DESCRIPTION AND HOW ESTABLISHED \_\_\_\_\_

**CORNERS TO BE INDEXED**

CORNER	SECTION	TOWNSHIP	RANGE

PREVIOUSLY RECORDED IN BOOK \_\_\_\_\_, PAGE \_\_\_\_\_  
 MONUMENT DESCRIPTION AND HOW ESTABLISHED \_\_\_\_\_

**CORNERS TO BE INDEXED**

CORNER	SECTION	TOWNSHIP	RANGE
E-1/4	13	84N	4W

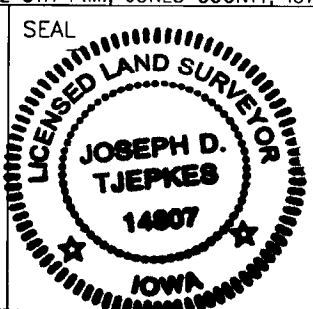
EAST 1/4 COR. SEC. 13, T84N, R4W FOUND CONC. MONUMENT WITH 1-1/4" BRASS CAP FLUSH WITH GROUND IN FENCE LINE  
 5.00'  
 6.50'  
 11.75'  
 SET PLASTIC SURVEY DISK IN COR. POST  
 SET PLASTIC SURVEY DISK IN BRACE POST  
 SET PLASTIC SURVEY DISK IN BOXELDER TREE  
 DITCH  
 X  
 SET REFERENCE POINTS AND TIED OUT AS INDICATED.

PREVIOUSLY RECORDED IN BOOK N/A, PAGE N/A  
 MONUMENT DESCRIPTION AND HOW ESTABLISHED FOUND CONC. MONUMENT WITH 1-1/4" BRASS CAP FLUSH WITH GROUND IN FENCE LINE PER COUNTY ENGINEER'S TIES (PROJ. NO. C-698, 1987) EAST QUARTER CORNER SECTION 13, TOWNSHIP 84 NORTH, RANGE 4 WEST OF THE 5TH P.M., JONES COUNTY, IOWA

I hereby declare that this plat, survey or report was made by me or under my direct personal supervision and that I am a duly registered Land Surveyor under the laws of the State of Iowa.

Signed: *Joseph D. Tjepkes* 2-5-02

Joseph D. Tjepkes L.S. Iowa Reg. No. 14807  
 My Registration Renewal Date is December 31, 2002



J.D. TJEPKES LS 14807  
 JONES COUNTY  
 ENGINEER'S OFFICE

19501 HWY. 64,  
 ANAMOSA, IOWA,  
 52205 (319)462-3785

# SECTION CORNER CERTIFICATE

OF  
 LAND SURVEY MONUMENTS SITUATED IN SECTION 14, TOWNSHIP 84 NORTH,  
 RANGE 4 WEST, OF THE FIFTH PRINCIPAL MERIDIAN, JONES, COUNTY, IOWA.

PREVIOUSLY RECORDED IN BOOK \_\_\_\_\_ AT PAGE \_\_\_\_\_.

FOR RECORDER'S USE

**REASON FOR PREPARING CERTIFICATE:**

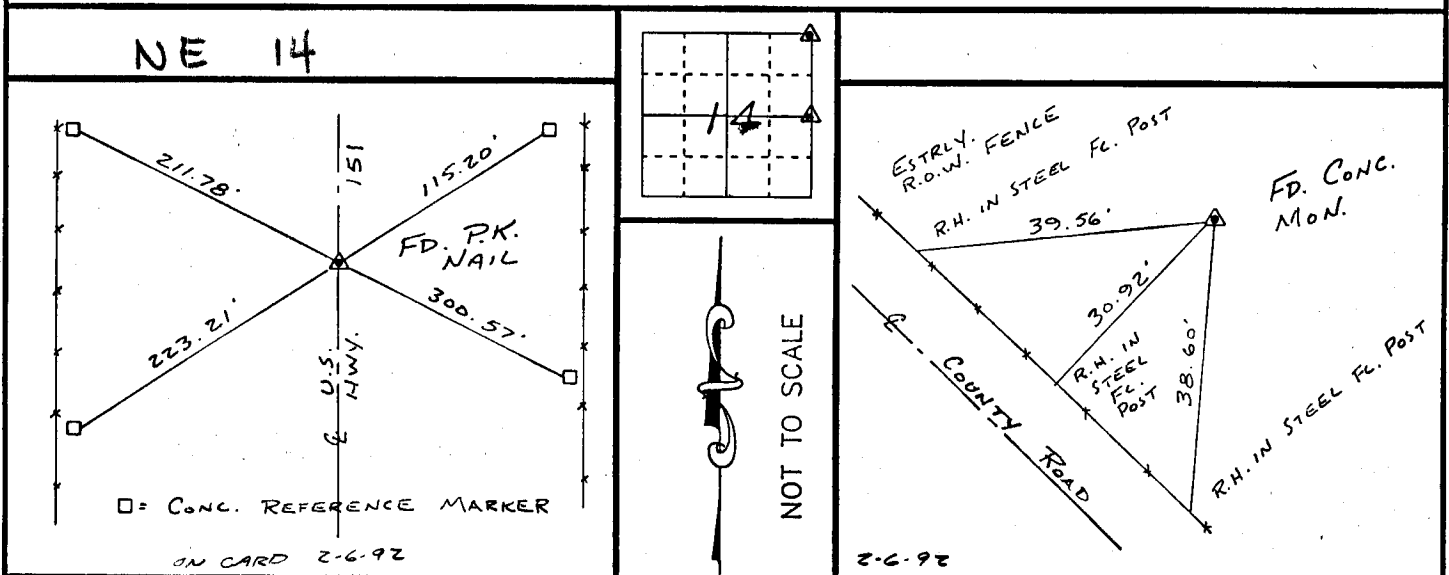
- A) THERE IS NO CERTIFICATE FOR THE CORNER ON FILE WITH THE RECORDER OF THE COUNTY IN WHICH THE CORNER IS LOCATED.
- B) CORNER POSITION DIFFERS FROM THAT SHOWN IN THE PUBLIC RECORDS OF THE COUNTY IN WHICH THE CORNER IS LOCATED.
- C) THE CORNER MONUMENT HAS BEEN REPLACED OR MODIFIED.
- D) THE REFERENCE TIES REFERRED TO IN AN EXISTING PUBLIC RECORD ARE INCORRECT.

**MONUMENT DESCRIPTION AND REMARKS :**

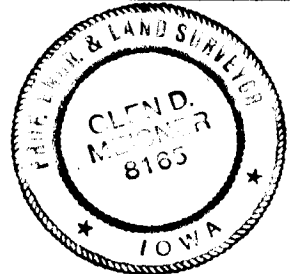
N.E. CoR. SECTION 14-T84N-R4W FOUND P.K. NAIL IN  
 & U.S. HWY 151 @ STA. 310 + 13.98

E'4 CoR. SECTION 14-T84N-R4W FOUND CONC. MON. WITH  
 1/2" IRON PIN

## RECOVERY TIE DRAWING



I, GLEN D. MEISNER, CERTIFY THAT THE CORNER LOCATION(S) SHOWN ON THIS RECORD WERE DETERMINED BY ME OR UNDER MY DIRECTION AND CONTROL AND THAT THIS U.S. PUBLIC LAND SURVEY MONUMENT RECORD IS CORRECT AND COMPLETE TO THE BEST OF MY KNOWLEDGE AND BELIEF.



Glen D. Meisner 2-3-92  
 GLEN D. MEISNER L.S. NO 8165 DATE

DZM:GML	GOVERNMENT CORNER 5/8" TIE PIN SET CENTERLINE EXISTING FENCE LINE R.O.W. LINE	SHEET TITLE: U.S. PUBLIC LAND SURVEY RECORD PROJECT TITLE: DR. BRIAN DARROW SURVEY	<b>HALL AND HALL ENGINEERS, INC.</b> 226 29TH STREET DRIVE S.E. CEDAR RAPIDS, IOWA 52403 319-362-9548
	DWN R.W.B. KIC G.D.M. APP	DATE: 1-30-92 SCALE: NONE	