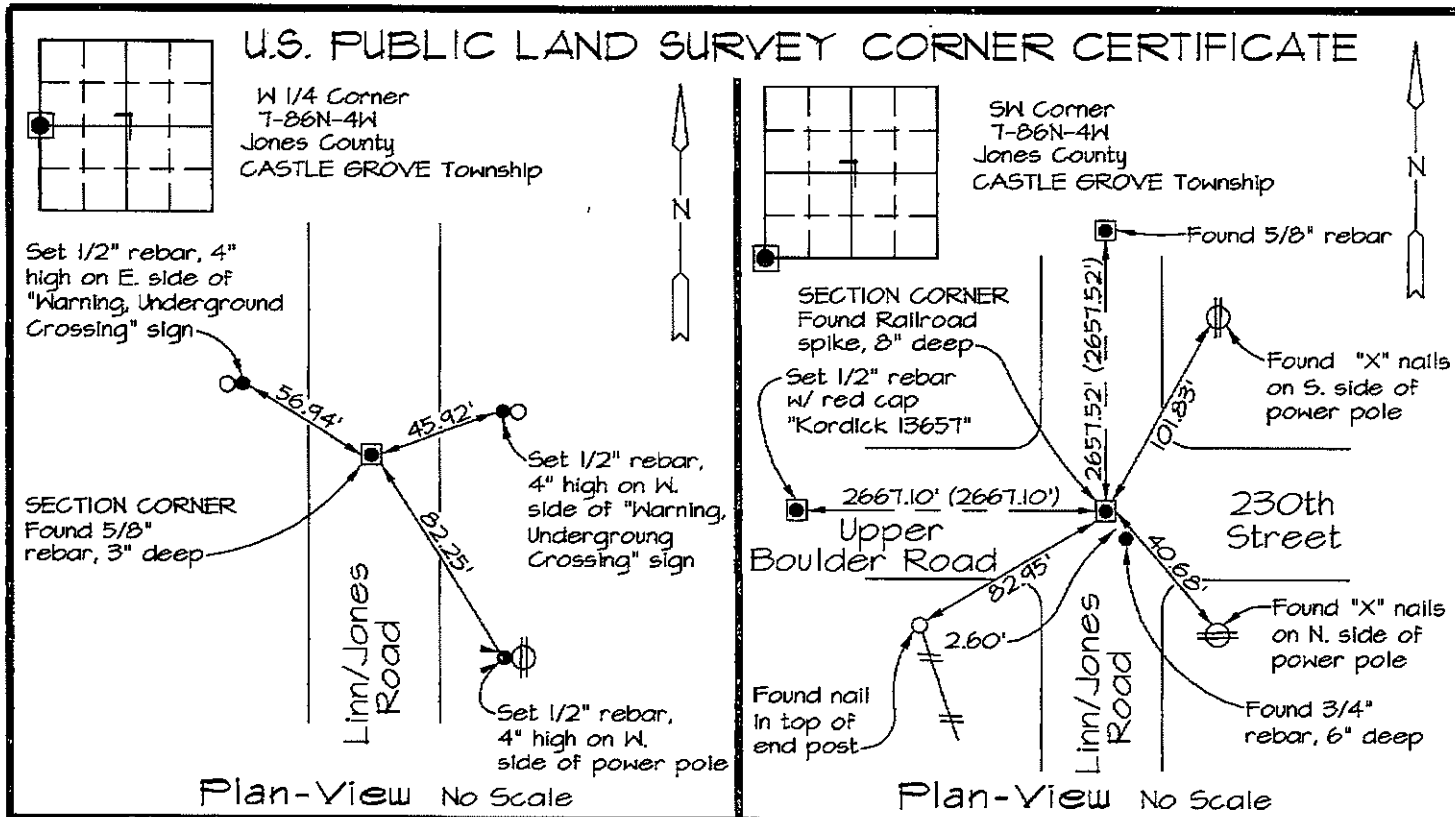


Marie Krutzfield, Recorder
 Jones County, Iowa

Prepared by: Richard M. Kordick, P.E., L.S., 120 East Main, Suite D, Anamosa, IA 52205 Phone: (319) 462-4498



Reason for corner tie:
 A) There is no certificate for the corner on file with the recorder.
 B) Corner position differs from previously recorded certificate recorded in book , page
 C) Corner monument was replaced or modified.
 D) Reference ties in previously recorded certificate recorded in book , page are incorrect or missing.

Research at the recorder's office, auditor's office, and engineer's office revealed the following:
 An Easement Exhibit recorded in Linn County Recorder's Office Bk. 3182-481, Bk. 3204-175, and Bk. 3182-485 called for a "Found Iron Pin, Sta. 31+43.72, CL 0.0'" at this corner. A Jones County Engineer's Office corner tie called for a "5/8"x24" rebar" at this corner.

An Easement Exhibit recorded in Linn County Recorder's Office Bk. 3182-482 and Bk. 3234-404 and 405 called for a "Found Iron Pin, Sta. 4+86.21, CL 0.0'" at this corner.

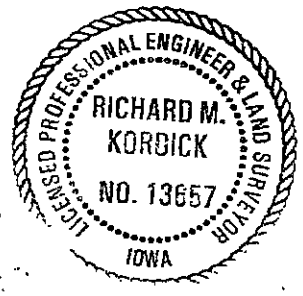
Field search performed was as follows:
 Field search was performed with a metal detector and excavation.

Field search performed was as follows:
 Field search was performed with a metal detector and excavation.

Monument found or set:
 A 5/8" rebar was found and used as the corner.

Monument found or set:
 A railroad spike was found and used as the corner.

I hereby certify that this land surveying document was prepared and the related survey work was performed by me or under my direct personal supervision and that I am a duly licensed Land Surveyor under the laws of the State of Iowa.
Richard M. Kordick 2/8/2008
 Richard M. Kordick date
 License number 13657
 My license renewal date is December 31, 2009.
 Pages or sheets covered by this seal: 1 of 1



LEGEND:
 ■ Section Corner as noted
 ⊕ Power Pole
 --- Section line
 --- Centerline
 ||| Existing Fence
 () Recorded Dist.

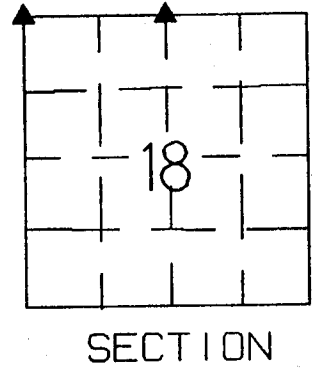
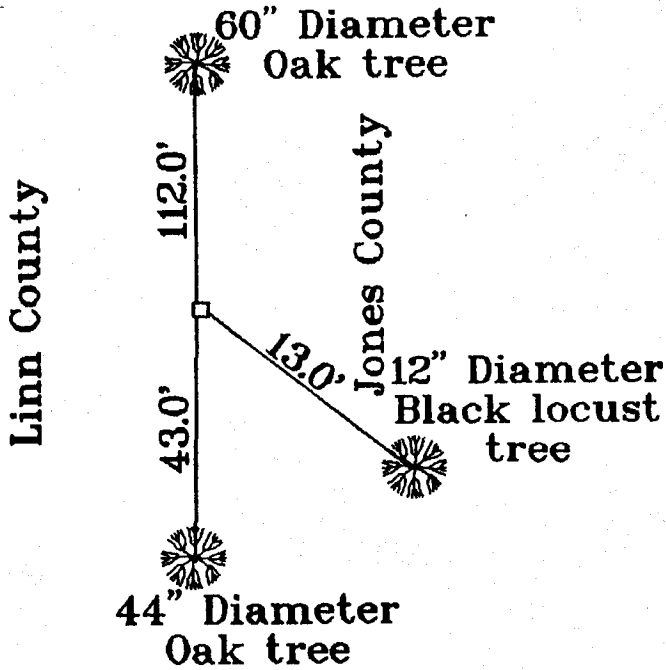
Kordick Surveying & Engineering
 120 East Main, Suite D
 Anamosa, Iowa 52205
 (319) 462-4498

U.S. Public Land
 Survey Corner Certificate
 Project:
 Section T-T. 86 N.-R. 4 W.

Field BK
 07103B
 Date
 2-8-08
 Job No.
 07103B
 Sheet
 1 of 1

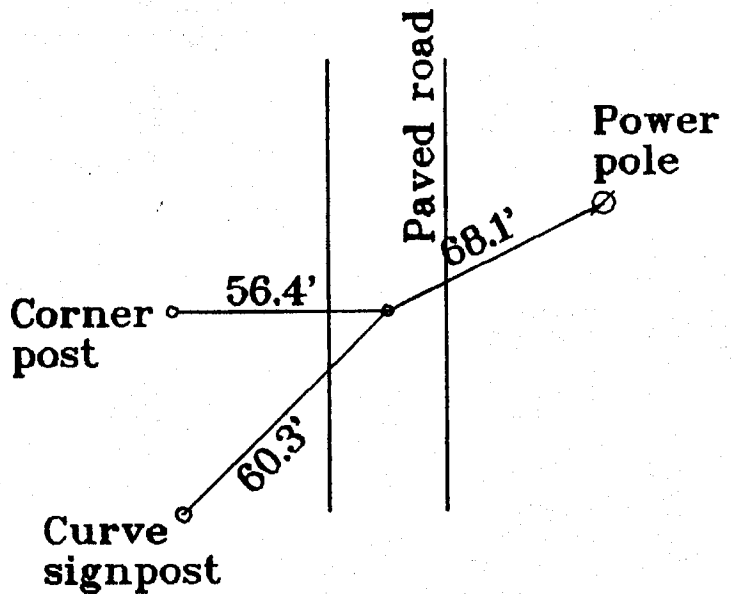
United States Public Land Survey Corner Certificate

Land survey monument located in Section 18, Township 84 North,
Range 4 West of the 5th Principal Meridian, Jones County, Iowa



NW Corner Sec 18-84-4
Fnd Concrete Monument

ON CARD 11-22-93 M.S.



N 1/4 Corner Sec 18-84-4
Fnd Bronze Tablet 0.2' West
of centerline.

Certification

I hereby certify that this plot and survey was made
by me or under my direct supervision and that I am
a duly Registered Land Surveyor under the laws of
the State of Iowa.

Harold E. Dillon
Harold E. Dillon Reg.#6581

2/8/93
Date



84418c-020893
84418a-020893