

44

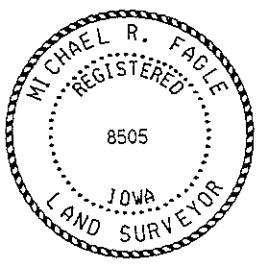
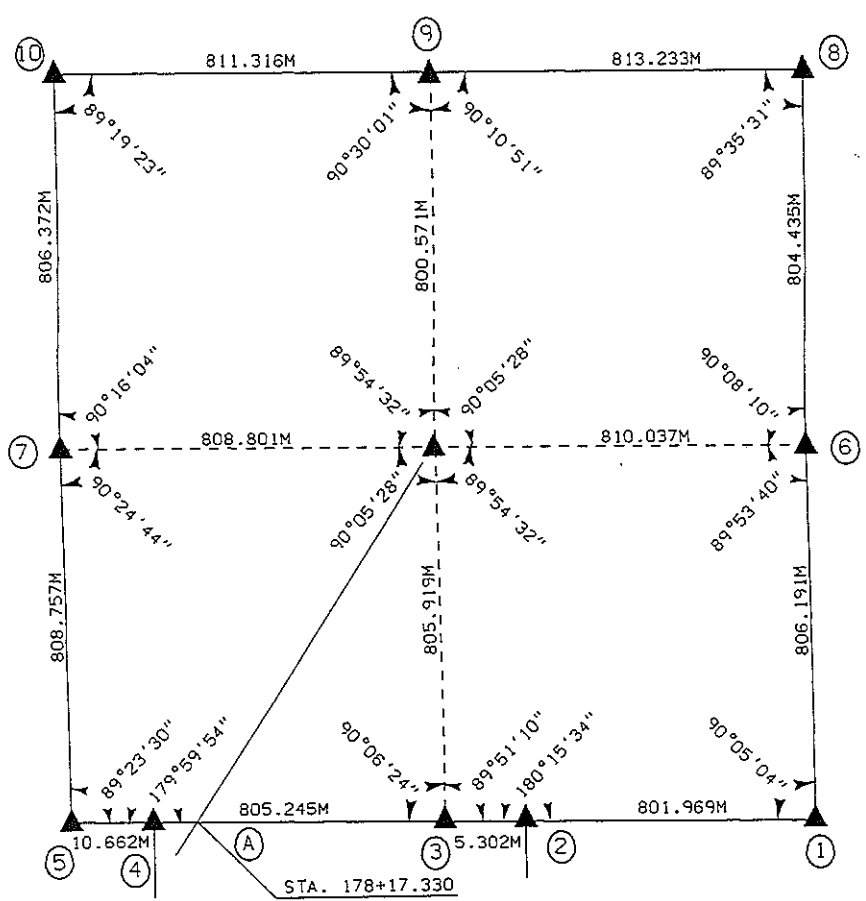
3229
FILED
RECORDERS OFFICE
JONES COUNTY IOWA
96 APR 22 AM 10:39
BOOK 398 PAGE 44
LINDA J. BENDIXEN
RECORDER *ll.ogel*

RUST ENVIRONMENT & INFRASTRUCTURE 501 SYCAMORE STREET WATERLOO, IOWA 50703 1-319-232-653

UNITED STATES PUBLIC SECTION CORNER CERTIFICATION
AND LAND CORNER SURVEY
SECTION 36 T-85N R-4W

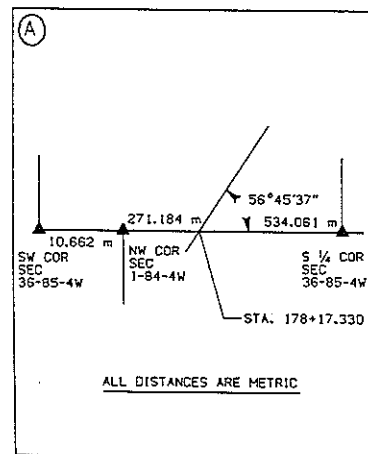
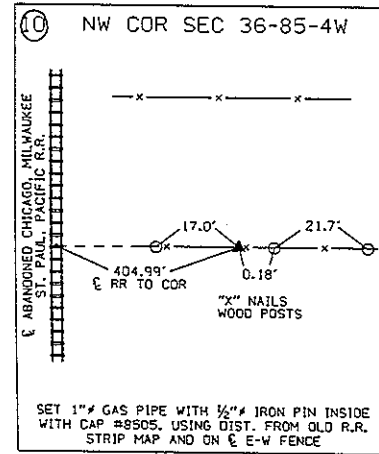
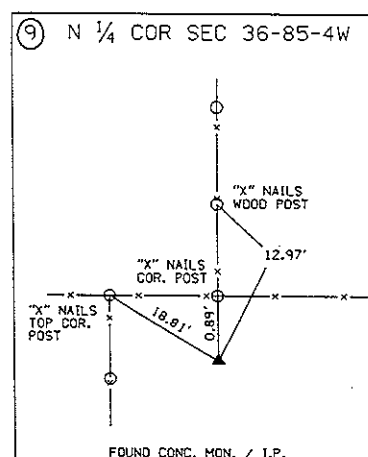
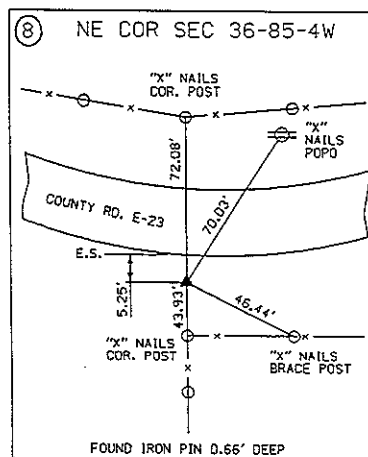
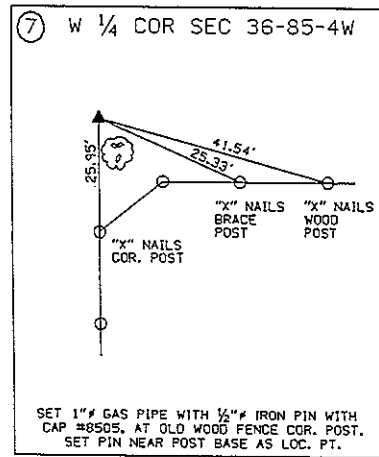
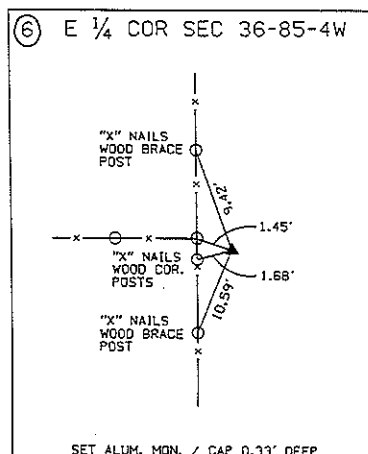
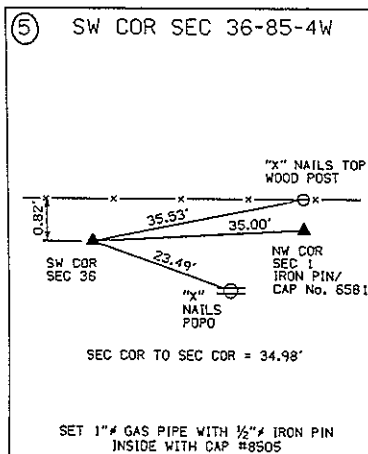
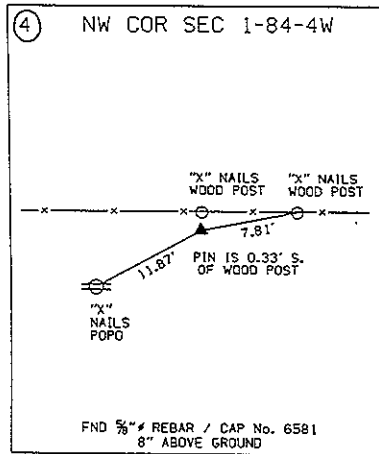
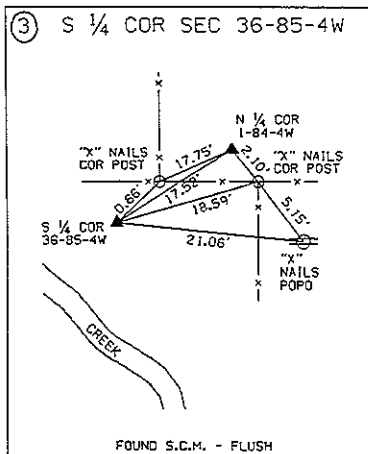
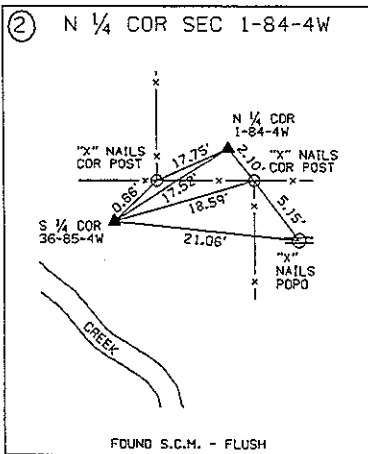
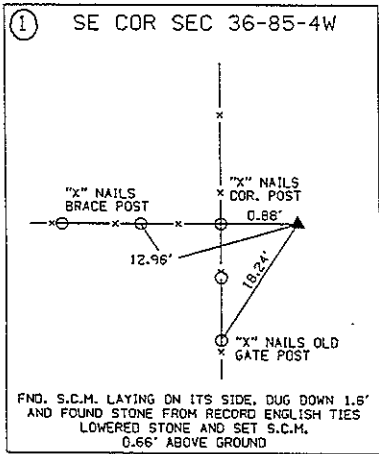
MADE FOR
IOWA DEPARTMENT OF TRANSPORTATION FOR THE PURPOSE OF
RIGHT OF WAY DESCRIPTIONS ON PRIMARY ROAD No. U.S. 151
MADE BY
MICHAEL R. FAGLE R.L.S. No. 8505
JONES COUNTY, IOWA NHS-151-3(84)--19-57
APRIL 1994 THRU AUGUST 1995

ALL DISTANCES WERE CAREFULLY MEASURED AND MAY NOT AGREE WITH ROAD SURVEY STATIONING



I hereby certify that this land surveying document was prepared by me or under my direct personal supervision and that I am a duly Registered Land Surveyor under the laws of the State of Iowa.
Signature: *Michael R Fagle*
Name: MICHAEL R. FAGLE, L.S.
Date 4-18-1996 Reg No. 8505
My registration renewal date is December 31, 1996

UNITED STATES PUBLIC SECTION CORNER CERTIFICATION
 AND LAND CORNER SURVEY
 SECTION 36 T-85N R-4W



ALL TIES ARE ENGLISH UNLESS OTHERWISE NOTED

SECTION CORNER CERTIFICATE

OF
 LAND SURVEY MONUMENTS SITUATED IN SECTION 1, TOWNSHIP 84 NORTH,
 RANGE 4 WEST, OF THE FIFTH PRINCIPAL MERIDIAN, JONES, COUNTY, IOWA.

PREVIOUSLY RECORDED IN BOOK _____ AT PAGE _____ .

FOR RECORDER'S USE

REASON FOR PREPARING CERTIFICATE:

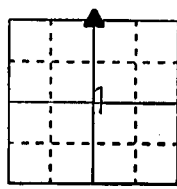
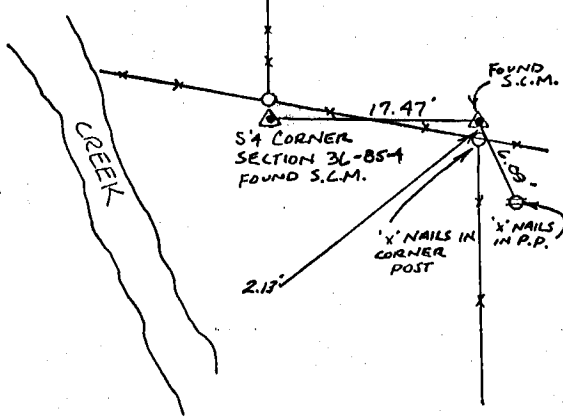
- A) THERE IS NO CERTIFICATE FOR THE CORNER ON FILE WITH THE RECORDER OF THE COUNTY IN WHICH THE CORNER IS LOCATED.
- B) CORNER POSITION DIFFERS FROM THAT SHOWN IN THE PUBLIC RECORDS OF THE COUNTY IN WHICH THE CORNER IS LOCATED.
- C) THE CORNER MONUMENT HAS BEEN REPLACED OR MODIFIED.
- D) THE REFERENCE TIES REFERRED TO IN AN EXISTING PUBLIC RECORD ARE INCORRECT.

MONUMENT DESCRIPTION AND REMARKS :

N 1/4 CORNER SECTION 1-T84N-R4W FOUND S.C.M. 2.13' N OF CORNER POST
FLUSH WITH GROUND

RECOVERY TIE DRAWING

N 1/4 COR. SEC. 1-84-4



NOT TO SCALE

4-12-94 M.S.

I, GLEN D. MEISNER, - CERTIFY THAT THE CORNER LOCATION(S) SHOWN ON THIS RECORD WERE DETERMINED BY ME OR UNDER MY DIRECTION AND CONTROL AND THAT THIS U.S. PUBLIC LAND SURVEY MONUMENT RECORD IS CORRECT AND COMPLETE TO THE BEST OF MY KNOWLEDGE AND BELIEF.

Glen D. Meisner 3-30-94
 GLEN D. MEISNER L.S. NO 8165 DATE



D Z I O N E L	△ GOVERNMENT CORNER ○ 5/8" TIE PIN SET --- CENTERLINE - - - EXISTING FENCE LINE - - - R.O.W. LINE	SHEET TITLE: U.S. PUBLIC LAND SURVEY RECORD PROJECT TITLE: MEADOW RIDGE ADDITION HUMPAL SURVEY	HALL AND HALL ENGINEERS, INC. 226 29TH STREET DRIVE S.E. CEDAR RAPIDS, IOWA 52403 319-362-9548			
	D W N <u>MJM</u>	C H K <u>GDM</u>	A P P <u>GDM</u>	D A T E <u>7-19-93</u>	S C A L E <u>NONE</u>	F N O <u>4934</u>

84401c-033094

THIS IS NOT A CERTIFICATION

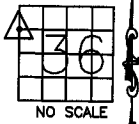
JONES COUNTY ENGINEER'S OFFICE, 19501 HWY. 64, ANAMOSA, IOWA, 52205 (319)462-3785

UNITED STATES PUBLIC LAND SURVEY CORNER CERTIFICATE

LAND SURVEY MONUMENTS SITUATED IN SECTION 36, TOWNSHIP 85
NORTH, RANGE 4 WEST OF THE 5TH P.M., JONES COUNTY, IOWA

CORNERS TO BE INDEXED

CORNER SECTION TOWNSHIP RANGE
SW,NW,NW 36 85N 4W



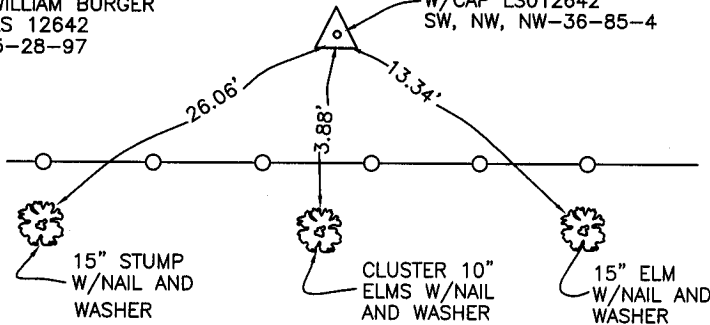
OFFICE FILE NO.

85436f_062404.tif

REF:
WILLIAM BURGER
LS 12642
5-28-97

1499

SET 1/2" IRON PIN
W/CAP LS012642
SW, NW, NW-36-85-4



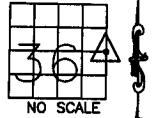
85436e_012405.tif ✓

PREVIOUSLY RECORDED IN BOOK _____, PAGE _____
MONUMENT DESCRIPTION AND HOW ESTABLISHED SET

1/2" IRON PIN WITH CAP LS 12642, SOUTHWEST CORNER, NORTHWEST QUARTER, SECTION 36, TOWNSHIP 85 NORTH, RANGE 4 WEST OF THE 5TH PRINCIPAL MERIDIAN, JONES COUNTY, IOWA.

CORNERS TO BE INDEXED

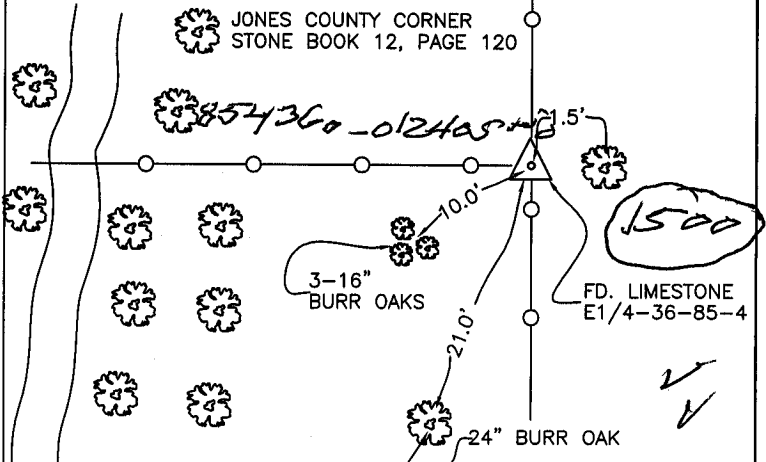
CORNER SECTION TOWNSHIP RANGE
E-QUARTER 36 85N 4W



OFFICE FILE NO.

85436o_062404.tif

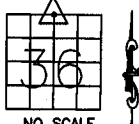
REF:
JONES COUNTY SURVEY:
(KIRCHOFF) 12-23-35



PREVIOUSLY RECORDED IN BOOK _____, PAGE _____
MONUMENT DESCRIPTION AND HOW ESTABLISHED FOUND
LARGE LIMESTONE 6" ABOVE SURFACE, EAST QUARTER CORNER SECTION 36, TOWNSHIP 85 NORTH, RANGE 4 WEST OF THE 5TH PRINCIPAL MERIDIAN, JONES COUNTY, IOWA. SET TIES AS INDICATED.

CORNERS TO BE INDEXED

CORNER SECTION TOWNSHIP RANGE
N-QUARTER 36 85N 4W

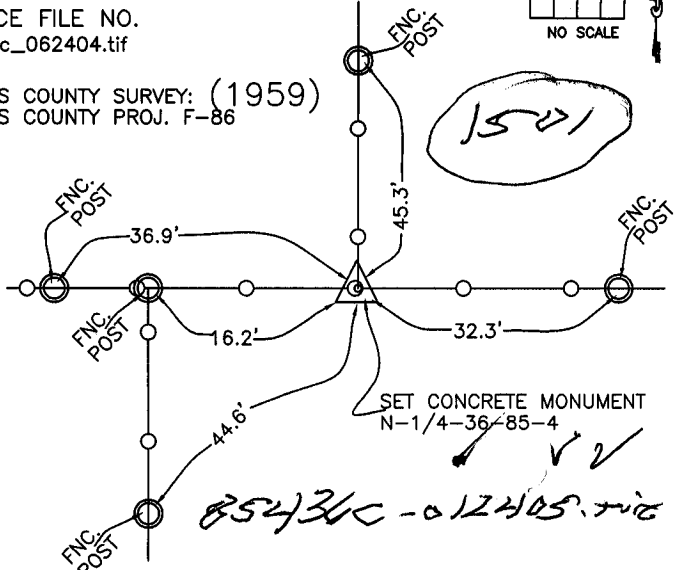


OFFICE FILE NO.

85436c_062404.tif

REF:
JONES COUNTY SURVEY: (1959)
JONES COUNTY PROJ. F-86

1501



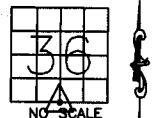
85436c_012405.tif ✓

PREVIOUSLY RECORDED IN BOOK _____, PAGE _____
MONUMENT DESCRIPTION AND HOW ESTABLISHED SET

STANDARD CONCRETE MONUMENT AS INDICATED, NORTH QUARTER CORNER SECTION 36, TOWNSHIP 85 NORTH, RANGE 4 WEST OF THE 5TH PRINCIPAL MERIDIAN, JONES COUNTY, IOWA.

CORNERS TO BE INDEXED

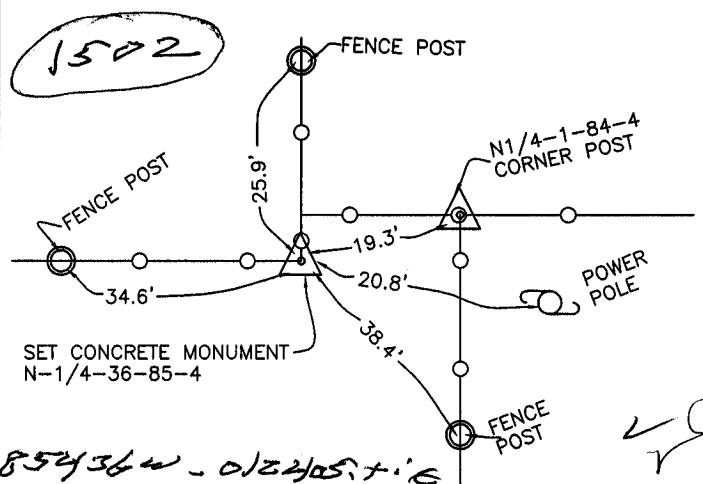
CORNER SECTION TOWNSHIP RANGE
S-QUARTER 36 85N 4W



OFFICE FILE NO.

85436w_062404.tif

JONES COUNTY SURVEY: (1959)
JONES COUNTY PROJ. F-86



85436w_012405.tif ✓

PREVIOUSLY RECORDED IN BOOK _____, PAGE _____
MONUMENT DESCRIPTION AND HOW ESTABLISHED SET

STANDARD CONCRETE MONUMENT AS INDICATED, SOUTH QUARTER CORNER SECTION 36, TOWNSHIP 85 NORTH, RANGE 4 WEST OF THE 5TH PRINCIPAL MERIDIAN, JONES COUNTY, IOWA.

~~I hereby declare that this plat, survey or report was made by me or under my direct personal supervision and that I am a duly registered Land Surveyor under the laws of the State of Iowa.~~

Signed:

SEAL

JONES COUNTY
ENGINEER'S OFFICE

19501 HWY. 64,
ANAMOSA, IOWA,
52205 (319)462-3785