

UNITED STATES PUBLIC LAND SURVEY CORNER CERTIFICATE

LAND SURVEY MONUMENTS SITUATED IN SECTION 25, TOWNSHIP 84 NORTH
RANGE 4 WEST OF THE 5TH P.M., JONES COUNTY, IOWA.

NO SCALE

N

W 1/4

SET "X" NAILS IN
14" TREE

SET "X" NAILS
IN TWIN 10"
TREE

14.03'

9.81'

0.39'

FOUND "X"
NAILS IN
CORNER
POST

PREVIOUSLY RECORDED IN BOOK _____ PAGE _____

MONUMENT DESCRIPTION AND HOW ESTABLISHED _____
FOUND SCM 2" ABOVE GROUND.

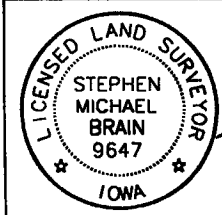
NO TIES ON FILE.

NO SCALE

N

PREVIOUSLY RECORDED IN BOOK _____ PAGE _____

MONUMENT DESCRIPTION AND HOW ESTABLISHED _____



I hereby certify that this land surveying document and the related survey work was performed by me or under my direct personal supervision and that I am a duly licensed Land Surveyor under the laws of the State of Iowa.

Signed: *Stephen Michael Brain* Date: 11/2/00

Stephen Michael Brain, L.S.
My License Renewal Date is December 31, 2000
License Number 9647
Pages or sheets covered by this seal: 1/1

CORNERS TO BE INDEXED

CORNER	SECTION	TOWNSHIP	RANGE
W 1/4	25	T84N	R4W

BRAIN ENGINEERING, INC.
777 10TH STREET
MARION, IOWA 52302 26930-10
(319) 373-1318

UNITED STATES PUBLIC LAND SURVEY CORNER CERTIFICATE OF

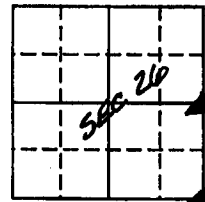
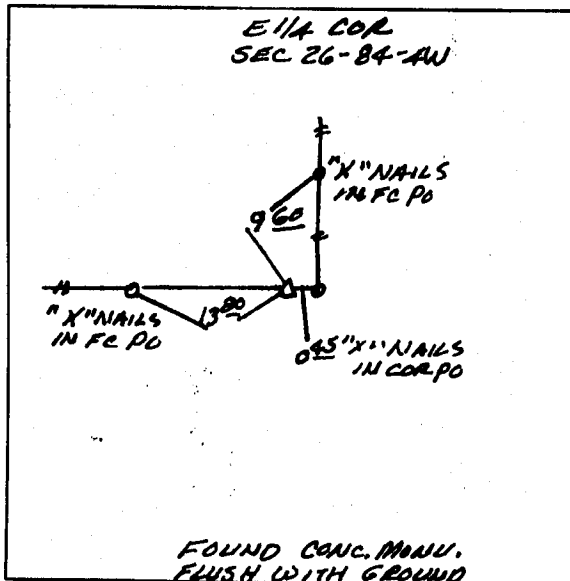
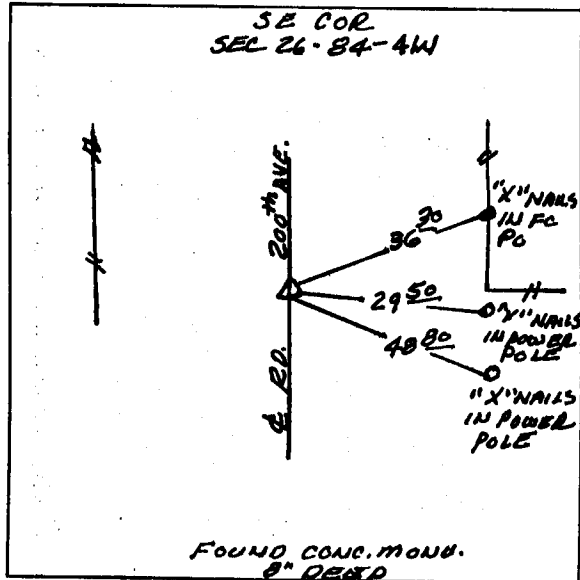
LAND SURVEY MONUMENTS SITUATED IN SECTION 26, TOWNSHIP 84 NORTH, RANGE 4 WEST, OF THE 5TH PRINCIPAL MERIDIAN JONES COUNTY IOWA.
PREVIOUSLY RECORDED IN BOOK 334 PAGE 260 IN COUNTY RECORDER'S OFFICE.
(book, page, document number, etc.)

(Show reason for preparing this certificate, the evidence and detailed procedures used in establishing the corner positions and monumentation found or placed.)

MONUMENT DESCRIPTION AND REMARKS: FOUND CONC. MANU'S IN PLACE AT THE E 1/4 COR AND THE SE COR.

PLAN - VIEW

(Show a minimum of three reference ties to durable physical objects, relevant monuments and physical conditions that will enable recovery of the corner.)



ON CARD 12-8-94 M.S.

I HEREBY CERTIFY THAT THIS LAND SURVEYING DOCUMENT WAS PREPARED BY ME OR UNDER MY DIRECT PERSONAL SUPERVISION AND AND THAT I AM A DULY REGISTERED LAND SURVEYOR UNDER THE LAWS OF THE STATE OF IOWA.

SIGNATURE: Larry R. McGuire
NAME: LARRY R. MCGUIRE

DATE: 7/15/94 REG. NO. 9019
(MONTH, DAY, YEAR)

MY REGISTRATION EXPIRES DECEMBER 31, 1994

LAND CORNERS TO BE RECORDED

Corners	Section	Twp.	Range
SE COR	26	84	4W
E 1/4 COR	26	84	4W



844260-071594
84435e-071594

UNITED STATES PUBLIC LAND SURVEY CORNER CERTIFICATE OF

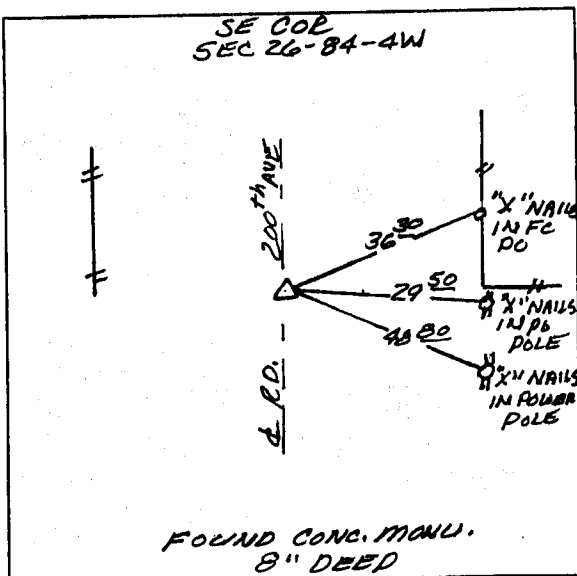
LAND SURVEY MONUMENTS SITUATED IN SECTION 26, TOWNSHIP 84 NORTH, RANGE 4 WEST, OF THE 5TH PRINCIPAL MERIDIAN JONES COUNTY IOWA.
PREVIOUSLY RECORDED IN DOES NOT APPLY IN COUNTY RECORDER'S OFFICE.
(book, page, document number, etc.)

(Show reason for preparing this certificate, the evidence and detailed procedures used in establishing the corner positions and monumentation found or placed.)

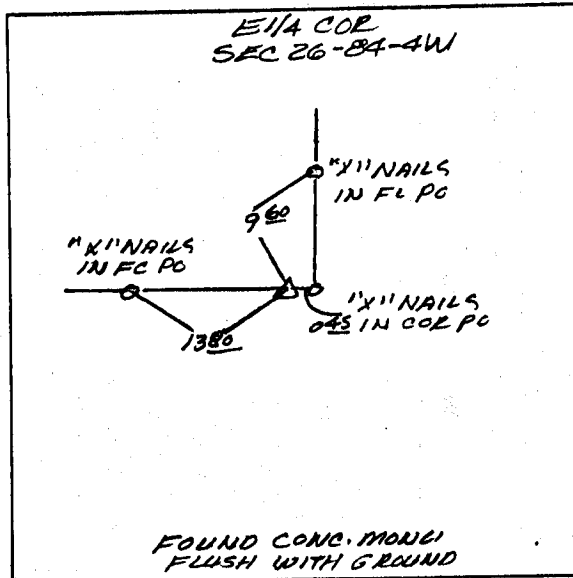
MONUMENT DESCRIPTION AND REMARKS: FOUND CONC MONU'S IN PLACE AT THE E 1/4 COR AND THE SE COR

PLAN - VIEW

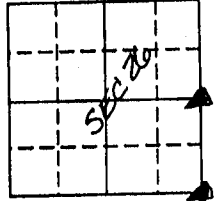
(Show a minimum of three reference ties to durable physical objects, relevant monuments and physical conditions that will enable recovery of the corner.)



ON CAED NE. COR. SEC. 35 11-20-93 M



11-20-93 MS.



I HEREBY CERTIFY THAT THIS LAND SURVEYING DOCUMENT WAS PREPARED BY ME OR UNDER MY DIRECT PERSONAL SUPERVISION AND THAT I AM A DULY REGISTERED LAND SURVEYOR UNDER THE LAWS OF THE STATE OF IOWA.

SIGNATURE: Larry R. McGuire
NAME: LARRY R. MCGUIRE

DATE: 9/14/93 REG. NO. 9019
(MONTH, DAY, YEAR)

MY REGISTRATION EXPIRES DECEMBER 31, 1994

LAND CORNERS TO BE RECORDED			
Corners	Section	Twp.	Range
SE COR	26	84	4W
E 1/4 COR	26	84	4W



844260-091493
844352-091493