

UNITED STATES PUBLIC LAND SURVEY CORNER CERTIFICATE OF

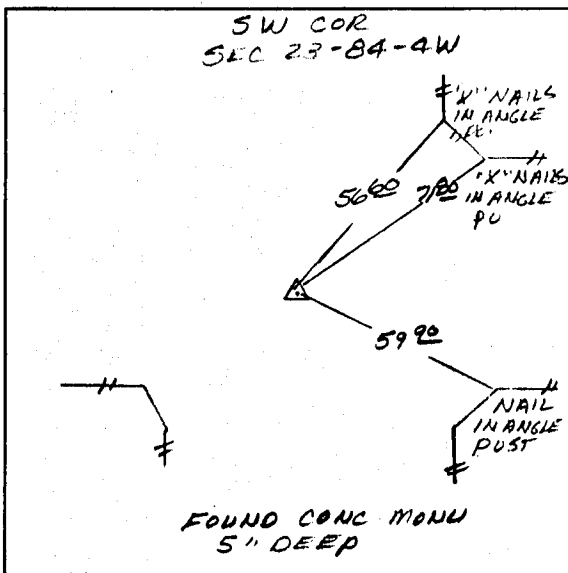
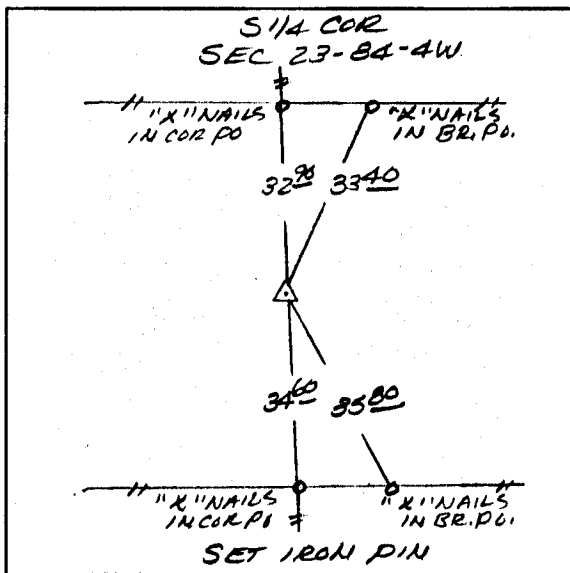
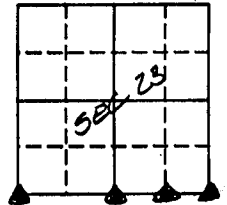
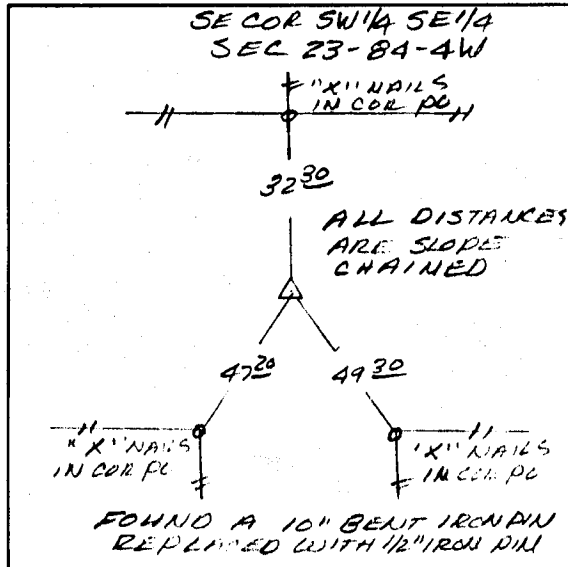
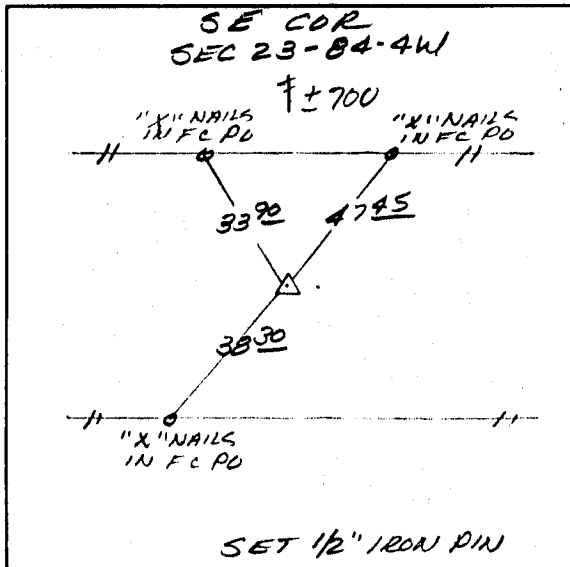
LAND SURVEY MONUMENTS SITUATED IN SECTION 23, TOWNSHIP 84 NORTH, RANGE 4 WEST, OF THE 5TH PRINCIPAL MERIDIAN JONES COUNTY IOWA.
PREVIOUSLY RECORDED IN DOES NOT APPLY IN COUNTY RECORDER'S OFFICE.
(book, page, document number, etc.)

(Show reason for preparing this certificate, the evidence and detailed procedures used in establishing the corner positions and monumentation found or placed.)

MONUMENT DESCRIPTION AND REMARKS: FOUND CONC MONUM AT THE SW COR OF THE SECTION. ALSO FOUND A BENT IRON PIN AT THE SE COR SW 1/4 SE 1/4. MEASURED MILE AND RE-ESTABLISHED SE COR AND S 1/4 COR USING FENCE LINE EVIDENCE IN THE E 1/2 OF THE SECTION.

PLAN - VIEW

(Show a minimum of three reference ties to durable physical objects, relevant monuments and physical conditions that will enable recovery of the corner.)



I hereby certify that the survey work was completed and this certificate was prepared by me or under my direct personal supervision and that I am a duly registered land surveyor under the laws of the state of Iowa. My registration expires December 31, 1922.

Signature: Larry R. McGuire
LARRY R. MCGUIRE

Date: 9/8/92 Reg. No. 9019

LAND CORNERS TO BE RECORDED

Corners	Section	Twp.	Range
SW COR	23	84	4W
S 1/4 COR	23	84	4W
SE COR SW 1/4 SE 1/4	23	84	4W
SE COR	23	84	4W



84426e-090892
84426d-090892
84426c-090892
84427e-090892