

Instrument #: 2016-3618
 12/21/2016 10:10:13 AM Total Pages: 1
 ZSC SECTION CORNER CERTIFICATE
 Recording Fee: \$7.00 Transfer Tax: \$0
 Sheri L. Jones, Recorder, Jones County Iowa



RETURN TO &

PREPARED BY: LEO P. BONIFAZI SCHNOOR-BONIFAZI ENGINEERING & SURVEYING LC, 431 FIFTH AVENUE SW, CEDAR RAPIDS, IA 52404 319-298-8888

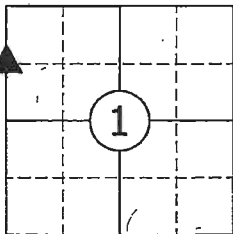
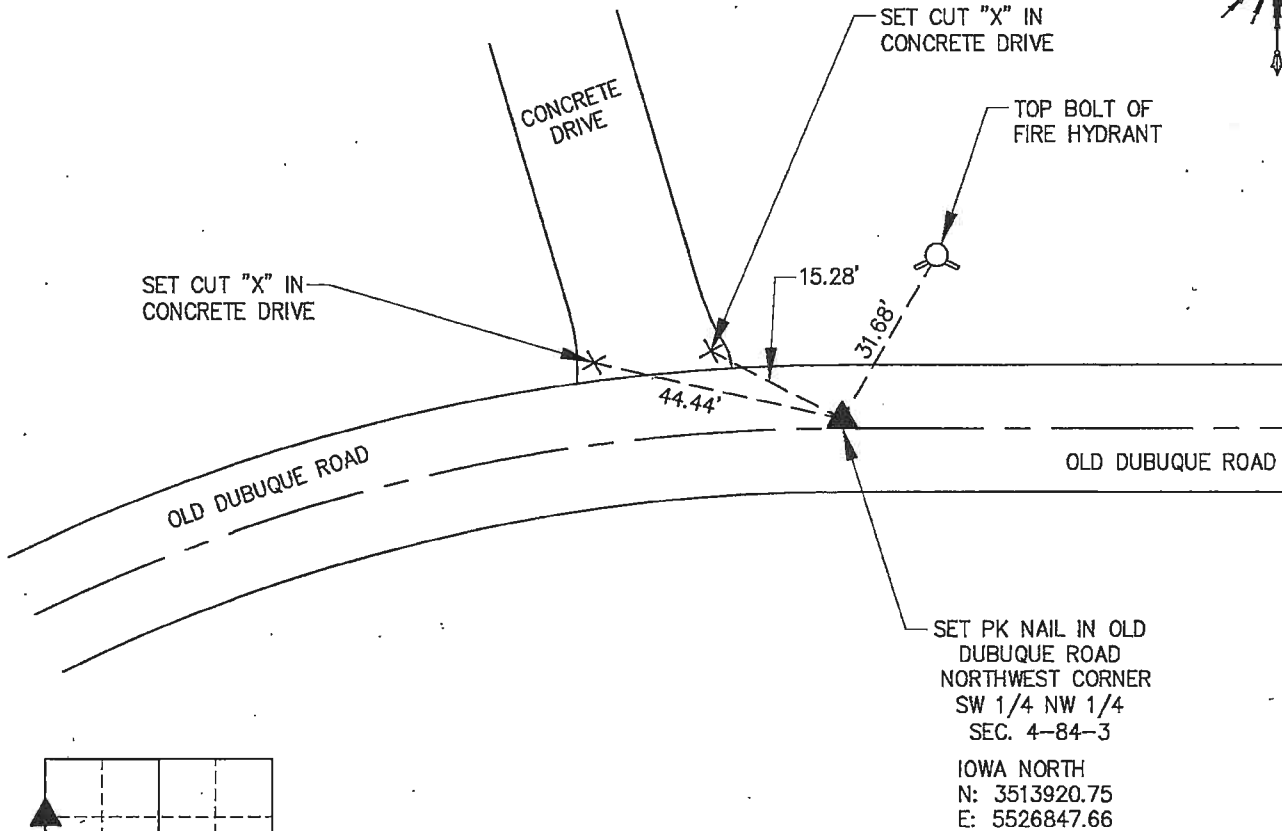
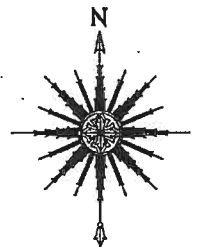
UNITED STATES-PUBLIC LAND SURVEY CORNER CERTIFICATE

Land Survey Monuments Situated in Section 1, Township 84 North, Range 4 West of the Fifth Principal Meridian, JONES County, Iowa.

Reason for filing: a. No certificate of record found. b. Monument or ties found differ from record. c. Replaced section corner.

NORTHWEST CORNER SW 1/4 NW 1/4 - SEARCHED LOCATION USING A CORNER CERTIFICATE RECORDED IN BOOK 395, PAGE 217 AT THE COUNTY RECORDER'S OFFICE. CORNER WAS REMOVED DURING ROADWAY RENOVATIONS. RESET A PK NAIL IN OLD DUBUQUE ROAD USING SURVEY RECORDED IN PLAT BOOK N, PAGE 17. SET TIES AS SHOWN BELOW.

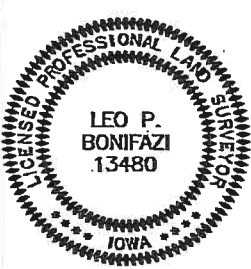
COORDINATES LISTED HEREON ARE DERIVED FROM THE IOWA DEPARTMENT OF TRANSPORTATION REAL TIME NETWORK COLLECTED IN THE NAD83(2011) (Epoch 2010.0000) NETWORK REF FRAME.



CORNERS TO BE INDEXED

NORTHWEST CORNER
 SW 1/4 NW 1/4 1-84-4

JOB:	16086
DRAWN:	E. SMALL
NOT TO SCALE	
DATE:	12/20/2016



I HEREBY CERTIFY THAT THIS LAND SURVEYING DOCUMENT WAS PREPARED AND THE RELATED SURVEY WORK WAS PERFORMED BY ME OR UNDER MY DIRECT PERSONAL SUPERVISION AND THAT I AM A DULY LICENSED PROFESSIONAL LAND SURVEYOR UNDER THE LAWS OF THE STATE OF IOWA.

SIGNATURE: Leo P. Bonifazi DATE: 12.20.16
 LEO P. BONIFAZI
 LICENSE NO. 13480
 SHEETS COVERED BY THIS SEAL: THIS SHEET ONLY
 MY LICENSE RENEWAL DATE IS DECEMBER 31, 2017

SCHNOOR-BONIFAZI ENGINEERING & SURVEYING, LC
 431 FIFTH AVENUE SW
 CEDAR RAPIDS, IA 52404
 (319) 298-8888 (PHONE)
 s-b-engineering.com



THIS IS NOT A CERTIFICATION

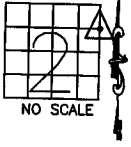
JONES COUNTY ENGINEER'S OFFICE, 19501 HWY. 64, ANAMOSA, IOWA, 52205 (319)462-3785

UNITED STATES PUBLIC LAND SURVEY CORNER CERTIFICATE

LAND SURVEY MONUMENTS SITUATED IN SECTION 2, TOWNSHIP 84
NORTH, RANGE 4 WEST OF THE 5TH P.M., JONES COUNTY, IOWA

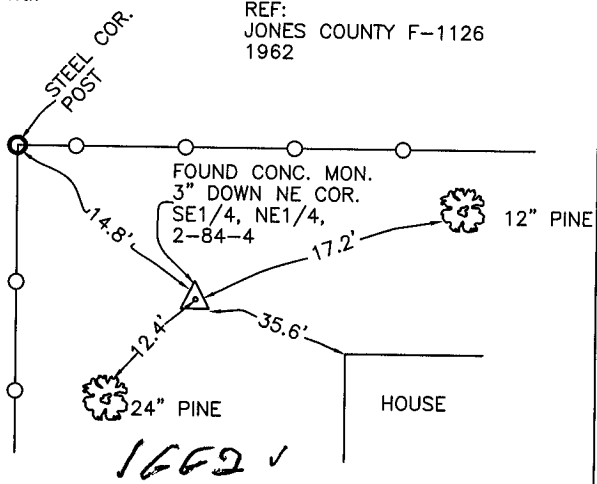
CORNERS TO BE INDEXED

CORNER SECTION TOWNSHIP RANGE
NE,SE,NE 2 84N 4W



OFFICE FILE NO. _____
84402j_060904.tif

REF: JONES COUNTY F-1126
1962

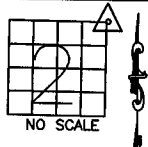


PREVIOUSLY RECORDED IN BOOK _____, PAGE _____
MONUMENT DESCRIPTION AND HOW ESTABLISHED _____ FOUND _____

CONCRETE MONUMENT 3" BELOW SURFACE, NORTHEAST CORNER, SOUTHEAST QUARTER, NORTHEAST QUARTER, SECTION 2, TOWNSHIP 84 NORTH, RANGE 4 WEST OF THE 5TH PRINCIPAL MERIDIAN, JONES COUNTY, IOWA. ✓

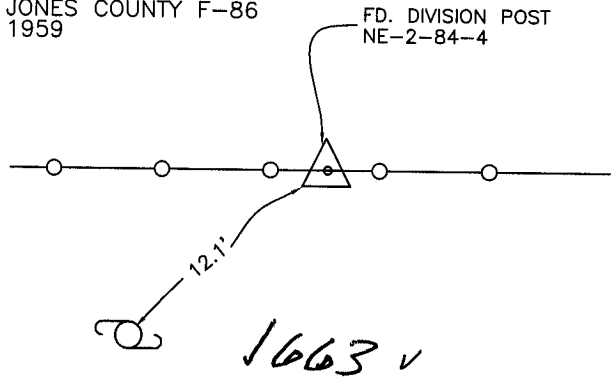
CORNERS TO BE INDEXED

CORNER SECTION TOWNSHIP RANGE
NORTHEAST 2 84N 4W



OFFICE FILE NO. _____
84402e_060904.tif

REF: JONES COUNTY F-86
1959

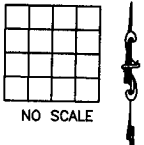


PREVIOUSLY RECORDED IN BOOK _____, PAGE _____
MONUMENT DESCRIPTION AND HOW ESTABLISHED _____ FOUND _____

DIVISION POST AS INDICATED, NORTHEAST CORNER SECTION 2, TOWNSHIP 84 NORTH, RANGE 4 WEST OF THE 5TH PRINCIPAL MERIDIAN, JONES COUNTY, IOWA. ✓

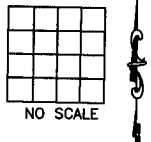
CORNERS TO BE INDEXED

CORNER SECTION TOWNSHIP RANGE
OFFICE FILE NO. _____



CORNERS TO BE INDEXED

CORNER SECTION TOWNSHIP RANGE
OFFICE FILE NO. _____



PREVIOUSLY RECORDED IN BOOK _____, PAGE _____
MONUMENT DESCRIPTION AND HOW ESTABLISHED _____

PREVIOUSLY RECORDED IN BOOK _____, PAGE _____
MONUMENT DESCRIPTION AND HOW ESTABLISHED _____

~~I hereby declare that this plat, survey or report was made by me or under my direct personal supervision and that I am a duly registered Land Surveyor under the laws of the State of Iowa.~~

Signed: _____

SEAL

JONES COUNTY
ENGINEER'S OFFICE

19501 HWY. 64,
ANAMOSA, IOWA,
52205 (319)462-3785