

☐☐
 Jones County Marie Krutzfield Recorder
 Fee Book 2011 1449
 06/02/2011 @0200PM # Pages 1
 ZSC SEC COR CERT
 Total Fees: \$0.00

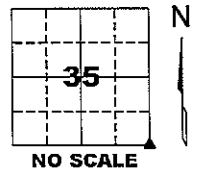
PREPARED BY
 CLARENCE J. WALTON, JONES COUNTY ENGINEER'S OFFICE, 19501 HWY. 64, ANAMOSA, IOWA, 52205 (319) 462-3785

UNITED STATES PUBLIC LAND SURVEY CORNER CERTIFICATE

LAND SURVEY MONUMENTS SITUATED IN SECTION 35, TOWNSHIP 85 NORTH,
 RANGE 4 WEST OF THE 5TH PRINCIPAL MERIDIAN, JONES COUNTY, IOWA.

STATE PLANE COORDINATE
 NAD 83 IOWA NORTH
 N 3515408.36
 E 5526726.57

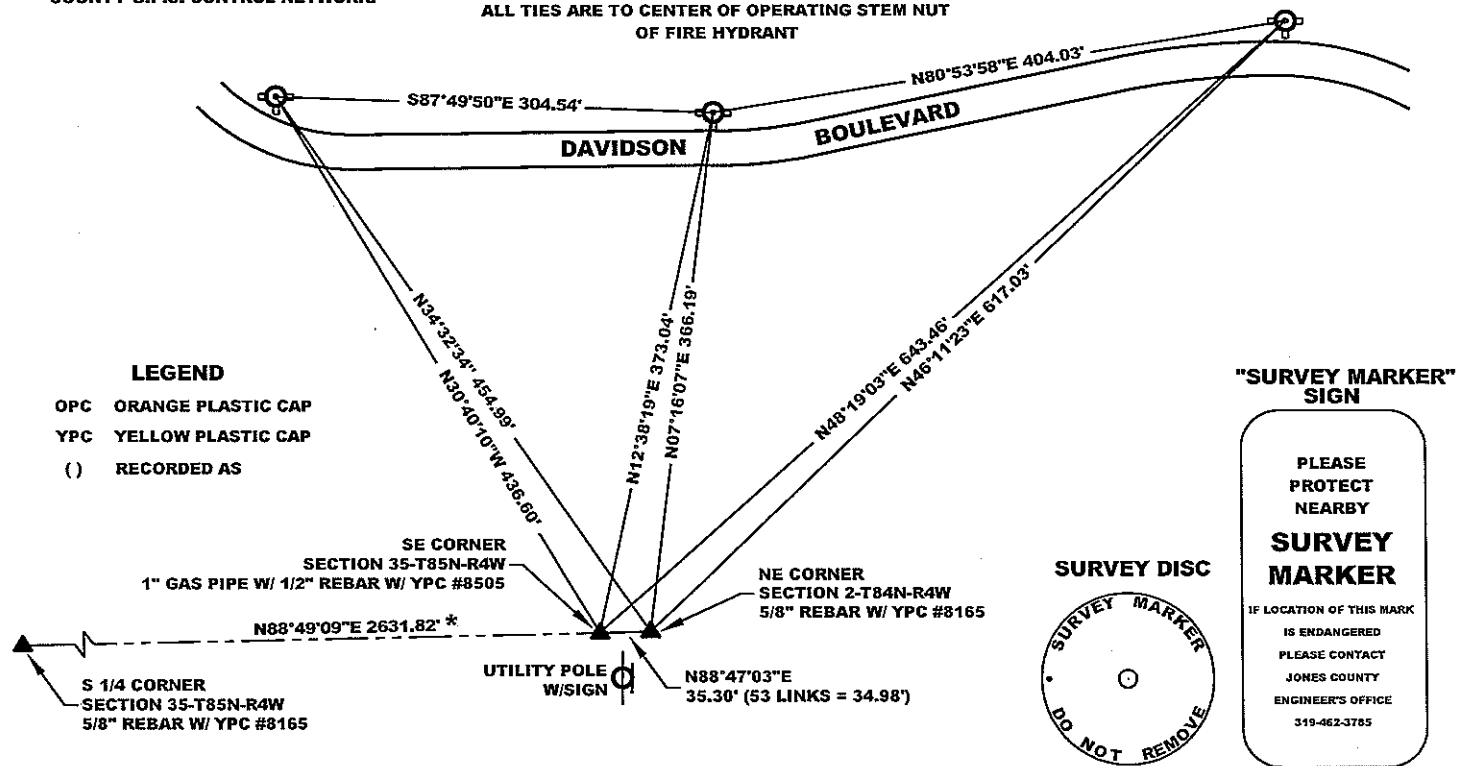
CORNER SECTION TOWNSHIP RANGE
 SE CORNER 35 T85N R4W



NOTES:

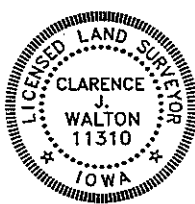
- 1) THE STATE PLANE COORDINATES AS SHOWN ARE FOR CONVENIENCE ONLY. THE TIES AS SHOWN SHOULD BE USED TO REPLACE THE CORNER, IF DESTROYED.
- 2) COORDINATES AS SHOWN ARE GRID COORDINATES AND BASED ON JONES COUNTY G.P.S. CONTROL NETWORK WHICH IN TURN IS BASED ON NAD 83 IOWA NORTH DATUM.
- 3) ALL MEASUREMENTS ARE IN FEET AND DECIMALS THEREOF.
- 4) * GRID DISTANCE, BASED ON JONES COUNTY G.P.S. CONTROL NETWORK.

ALL TIES ARE TO CENTER OF OPERATING STEM NUT
 OF FIRE HYDRANT



PREVIOUSLY RECORDED IN BOOK 398, PAGE 44
 MONUMENT DESCRIPTION AND HOW ESTABLISHED PER CORNER CERTIFICATE OF RECORD, FOUND 5/8" REBAR WITH YELLOW PLASTIC CAP #8165 AT THE NE CORNER OF SECTION 2-T84N-R4W AND FOUND 1" BORE PIPE W/ 1/2" REBAR W/YELLOW PLASTIC CAP #8505 INSIDE PIPE AT THE SE CORNER OF SECTION 35-T85N-R4 W. SET "SURVEY MARKER" SIGN ON UTILITY POLE JUST S'LY OF CORNERS AS A WITNESS.

INSTRUMENT: 4/13/11



I hereby certify that this land surveying document and the related survey work was performed by me or under my direct personal supervision and that I am a duly registered Land Surveyor under the laws of the State of Iowa.
 Signed:
Clarence J. Walton 6/3/11
 Clarence J. Walton, L.S.
 My Registration Renewal Date is December 31, 2011
 Iowa License Number 11310
 Pages or sheets covered by this seal: 1 of 1.

- A. THERE IS NO CERTIFICATE FOR THE CORNER ON FILE WITH THE RECORDER OF THE COUNTY IN WHICH THE CORNER IS LOCATED.
- B. THE CORNER MONUMENT HAS BEEN REPLACED OR MODIFIED.
- C. THE SURVEYOR IN RESPONSIBLE CHARGE OF THE LAND SURVEYING ACCEPTS A CORNER POSITION THAT DIFFERS FROM THAT SHOWN IN THE PUBLIC RECORDS OF THE COUNTY IN WHICH THE CORNER IS LOCATED.
- D. THE REFERENCE TIES REFERRED TO IN AN EXISTING PUBLIC RECORD NO LONGER EXIST.
- E. EXISTING CORNER TIES UPDATED.

CORNERS TO BE INDEXED

CORNER	SECTION	TOWNSHIP	RANGE
SE CORNER	35	85N	4W
SW CORNER	36	85N	4W

JONES COUNTY ENGINEER'S OFFICE



19501 HWY. 64, ANAMOSA, IOWA 52205
 (319) 462-3785

THIS IS NOT A CERTIFICATION

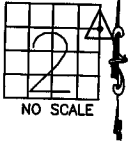
JONES COUNTY ENGINEER'S OFFICE, 19501 HWY. 64, ANAMOSA, IOWA, 52205 (319)462-3785

UNITED STATES PUBLIC LAND SURVEY CORNER CERTIFICATE

LAND SURVEY MONUMENTS SITUATED IN SECTION 2, TOWNSHIP 84
NORTH, RANGE 4 WEST OF THE 5TH P.M., JONES COUNTY, IOWA

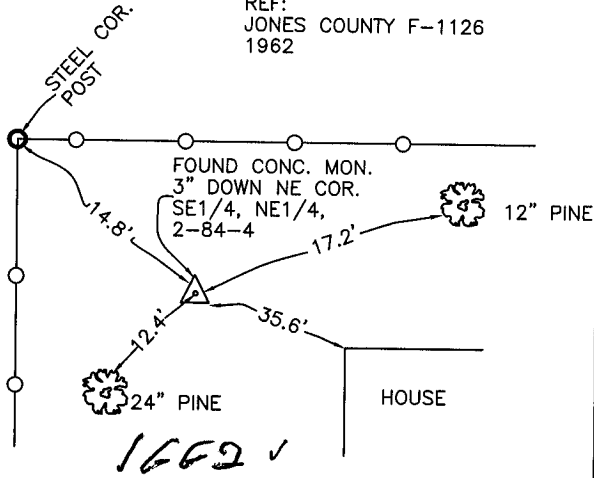
CORNERS TO BE INDEXED

CORNER SECTION TOWNSHIP RANGE
NE,SE,NE 2 84N 4W



OFFICE FILE NO.
84402j_060904.tif

REF:
JONES COUNTY F-1126
1962



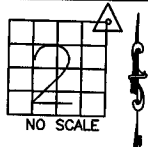
PREVIOUSLY RECORDED IN BOOK _____, PAGE _____
MONUMENT DESCRIPTION AND HOW ESTABLISHED FOUND

CONCRETE MONUMENT 3" BELOW SURFACE, NORTHEAST CORNER,
SOUTHEAST QUARTER, NORTHEAST QUARTER, SECTION 2, TOWNSHIP
84 NORTH, RANGE 4 WEST OF THE 5TH PRINCIPAL MERIDIAN, JONES
COUNTY, IOWA.

1662 ✓

CORNERS TO BE INDEXED

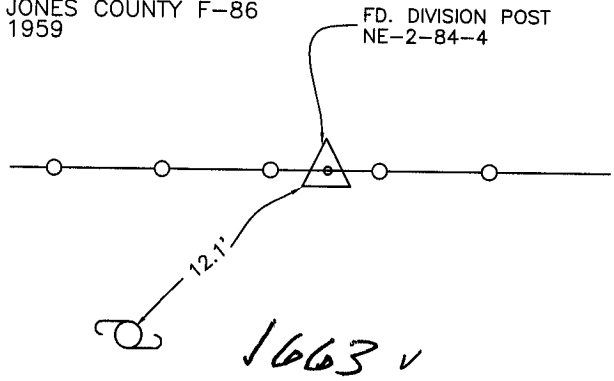
CORNER SECTION TOWNSHIP RANGE
NORTHEAST 2 84N 4W



OFFICE FILE NO.
84402e_060904.tif

REF:
JONES COUNTY F-86

FD. DIVISION POST
NE-2-84-4



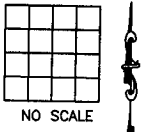
1663 ✓

PREVIOUSLY RECORDED IN BOOK _____, PAGE _____
MONUMENT DESCRIPTION AND HOW ESTABLISHED FOUND

DIVISION POST AS INDICATED, NORTHEAST CORNER SECTION 2,
TOWNSHIP 84 NORTH, RAGNE 4 WEST OF THE 5TH PRINCIPAL
MERIDIAN, JONES COUNTY, IOWA.

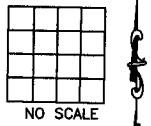
CORNERS TO BE INDEXED

CORNER SECTION TOWNSHIP RANGE
OFFICE FILE NO.



CORNERS TO BE INDEXED

CORNER SECTION TOWNSHIP RANGE
OFFICE FILE NO.



PREVIOUSLY RECORDED IN BOOK _____, PAGE _____
MONUMENT DESCRIPTION AND HOW ESTABLISHED

PREVIOUSLY RECORDED IN BOOK _____, PAGE _____
MONUMENT DESCRIPTION AND HOW ESTABLISHED

~~I hereby declare that this plat, survey or report was made by me or under my direct personal supervision and that I am a duly registered Land Surveyor under the laws of the State of Iowa.~~

Signed: _____

SEAL

JONES COUNTY
ENGINEER'S OFFICE

19501 HWY. 64,
ANAMOSA, IOWA,
52205 (319)462-3785

44

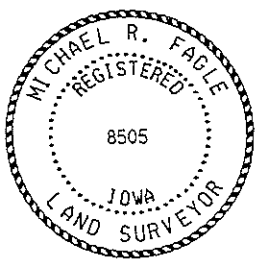
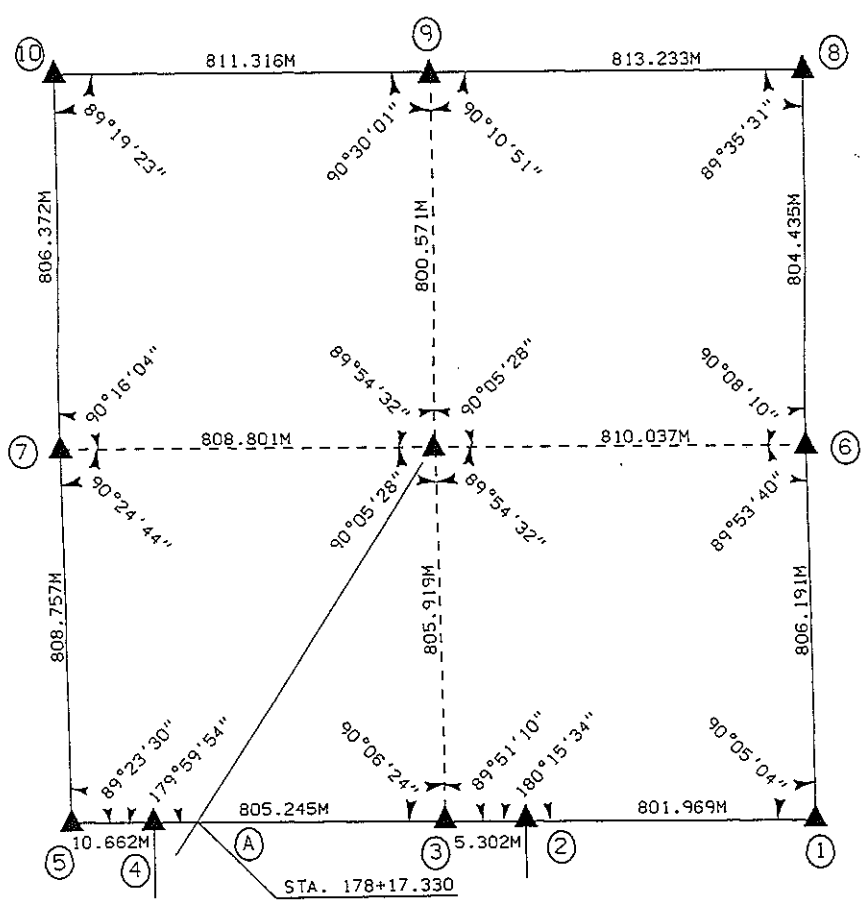
3229
FILED
RECORDERS OFFICE
JONES COUNTY IOWA
96 APR 22 AM 10:39
BOOK 398 PAGE 44
LINDA J. BENDIXEN
RECORDER *ll.ogel*

RUST ENVIRONMENT & INFRASTRUCTURE 501 SYCAMORE STREET WATERLOO, IOWA 50703 1-319-232-653

UNITED STATES PUBLIC SECTION CORNER CERTIFICATION
AND LAND CORNER SURVEY
SECTION 36 T-85N R-4W

MADE FOR
IOWA DEPARTMENT OF TRANSPORTATION FOR THE PURPOSE OF
RIGHT OF WAY DESCRIPTIONS ON PRIMARY ROAD No. U.S. 151
MADE BY
MICHAEL R. FAGLE R.L.S. No. 8505
JONES COUNTY, IOWA NHS-151-3(84)--19-57
APRIL 1994 THRU AUGUST 1995

ALL DISTANCES WERE CAREFULLY MEASURED AND MAY NOT AGREE WITH ROAD SURVEY STATIONING



I hereby certify that this land surveying document was prepared by me or under my direct personal supervision and that I am a duly Registered Land Surveyor under the laws of the State of Iowa.
Signature: *Michael R Fagle*
Name: MICHAEL R. FAGLE, L.S.
Date 4-18-1996 Reg No. 8505
My registration renewal date is December 31, 1996

UNITED STATES PUBLIC LAND SURVEY CORNER CERTIFICATE

LAND SURVEY MONUMENT LOCATED IN SECTION 2 TOWNSHIP 84
NORTH. RANGE 4 WEST OF THE 5TH P.M. JONES COUNTY, IOWA

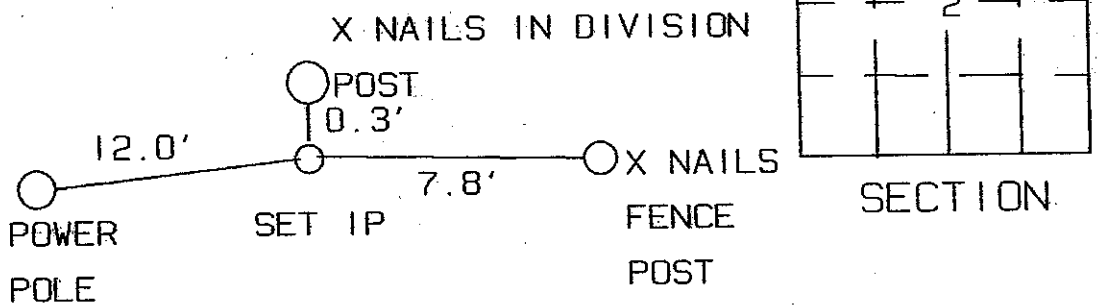
PREVIOUSLY RECORDED IN BOOK NA ON PAGE NA
1059

FILED
RECORDERS OFFICE
JONES COUNTY IOWA

90 NOV -7 AM 10:44

BOOK 294 PAGE 215
MONIS JEANNE HEBBER
RECORDER
45° pd.

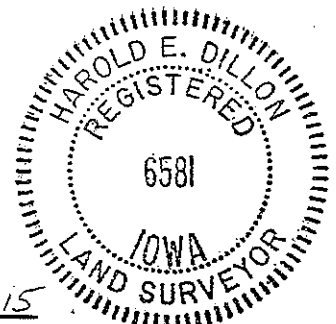
↑
NO SCALE



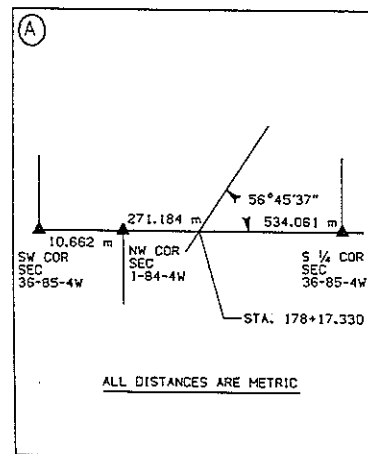
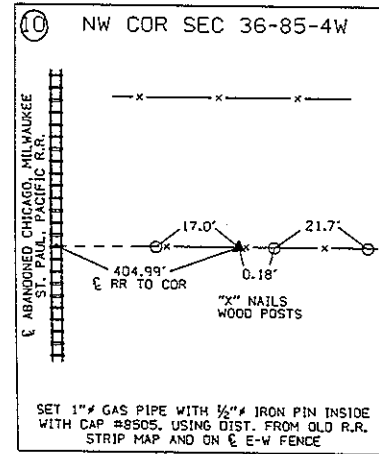
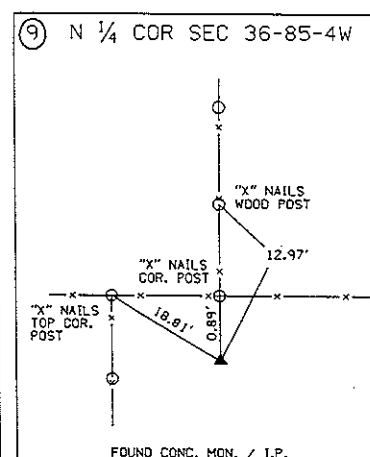
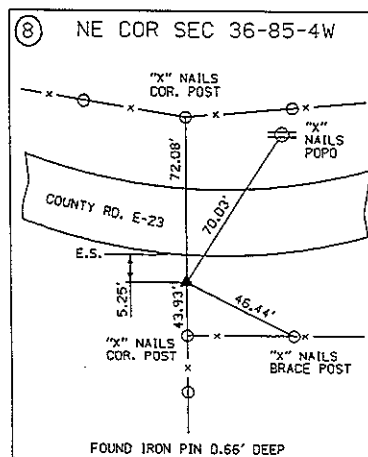
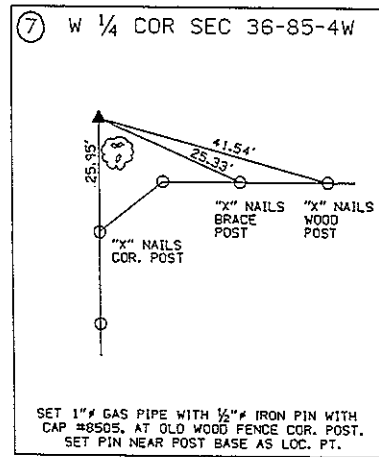
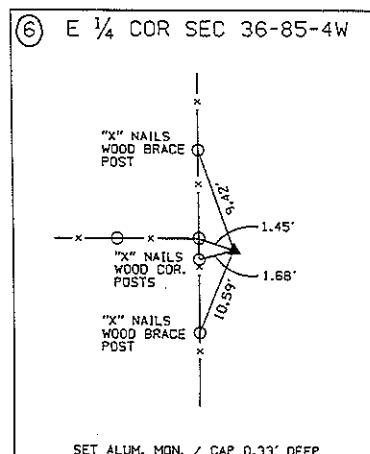
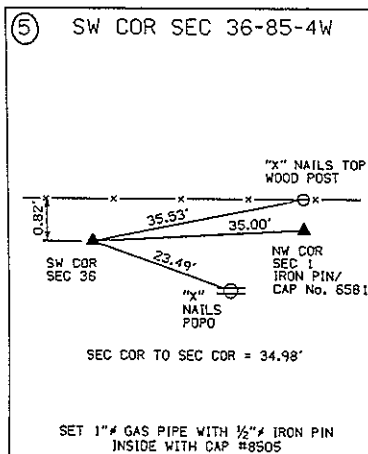
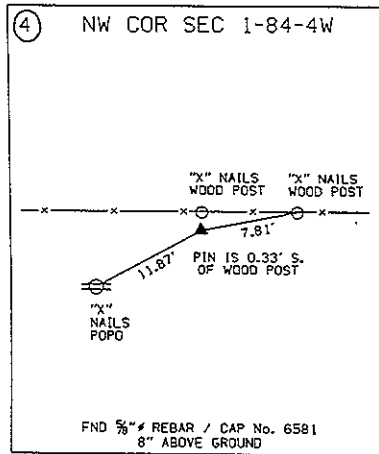
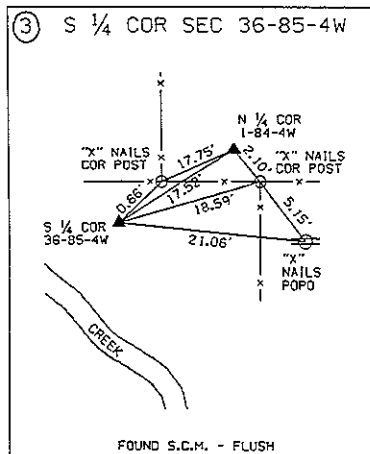
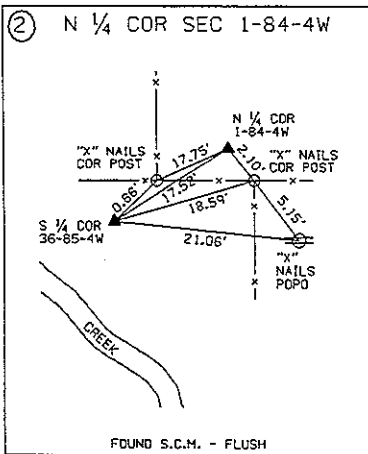
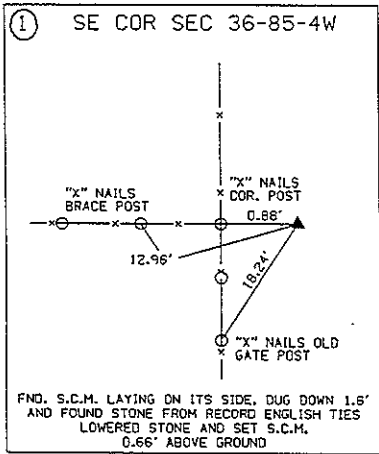
MONUMENT DESCRIPTION AND NARRATIVE NE CORNER SEC 2-84-4
TIES FROM COUNTY ENGINEER OFFICE CALLED DIVISION
POST. FND POST SET IRON ROD 0.3' SOUTH TIES TO IP

I HEREBY CERTIFY THAT THE HEREON DEPICTED SURVEY TIE WORK WAS COMPLETED BY ME OR UNDER MY DIRECT PERSONAL SUPERVISION AND THAT I AM A DULY REGISTERED LAND SURVEYOR UNDER THE LAWS OF THE STATE OF IOWA.

Harold E Dillon 10/22/90



UNITED STATES PUBLIC SECTION CORNER CERTIFICATION
 AND LAND CORNER SURVEY
 SECTION 36 T-85N R-4W



ALL TIES ARE ENGLISH UNLESS OTHERWISE NOTED