

2004 2510

FILED
RECORDERS OFFICE
IOWA COUNTY IOWA

04 JUL -8 AM 10:42

MANIE KRUTZFIELD
RECORDER 7.00 pd

PREPARED BY
STEPHEN MICHAEL BRAIN, BRAIN ENGINEERING, INC., 1540 MIDLAND COURT NE, CEDAR RAPIDS, IOWA PH. (319) 294-942.

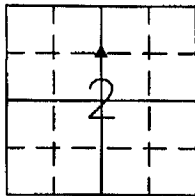
UNITED STATES PUBLIC LAND SURVEY CORNER CERTIFICATE

LAND SURVEY MONUMENTS SITUATED IN SECTION 2, TOWNSHIP 84 NORTH
RANGE 4 WEST OF THE 5TH P.M., JONES COUNTY, IOWA.

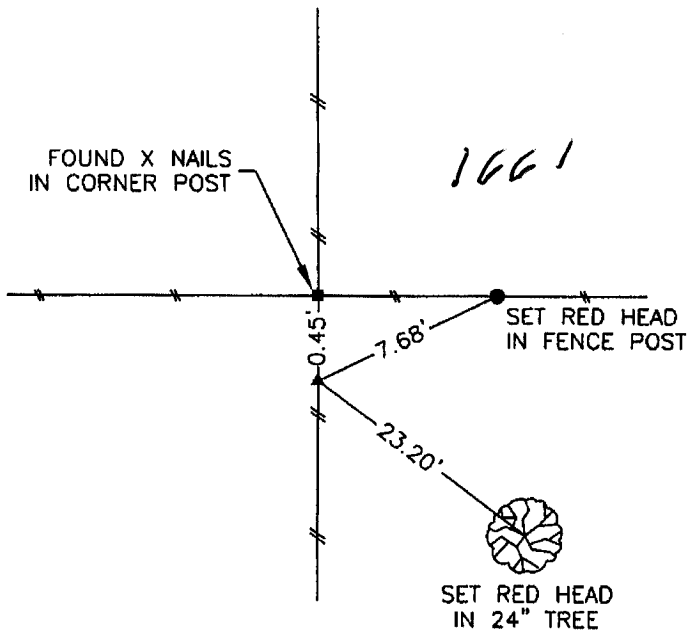
NO SCALE



NE CORNER
SE 1/4 NW 1/4

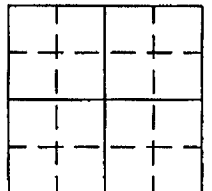


821402h-070704.t.c



1661

NO SCALE



PREVIOUSLY RECORDED IN BOOK _____ PAGE _____
MONUMENT DESCRIPTION AND HOW ESTABLISHED _____
FOUND 1/2" REBAR W/ ALUMINUM CAP

PREVIOUSLY RECORDED IN BOOK _____ PAGE _____
MONUMENT DESCRIPTION AND HOW ESTABLISHED _____



I hereby certify that this land surveying document and the related survey work was performed by me or under my direct personal supervision and that I am a duly licensed Land Surveyor under the laws of the State of Iowa.

Signed *[Signature]* Date 7/7/04
Stephen Michael Brain, L.S.
My License Renewal Date is December 31, 2004
License Number 9647
Pages or sheets covered by this seal: 1/1

- A. THERE IS NO CERTIFICATE FOR THE CORNER ON FILE WITH THE RECORDER OF THE COUNTY IN WHICH THE CORNER IS LOCATED
- B. THE SURVEYOR IN RESPONSIBLE CHARGE OF THE LAND SURVEYING ACCEPTS A CORNER POSITION WHICH DIFFERS FROM THAT SHOWN IN THE PUBLIC RECORDS OF THE COUNTY IN WHICH THE CORNER IS LOCATED.
- C. THE CORNER MONUMENT IS REPLACED OR MODIFIED IN ANY WAY.
- D. THE REFERENCE TIES REFERRED TO IN AN EXISTING PUBLIC RECORD ARE NOT CORRECT. B

CORNERS TO BE INDEXED

CORNER	SECTION	TOWNSHIP	RANGE
NE SE 1/4 NW 1/4	2	T84N	R4W

BRAIN ENGINEERING, INC.
1540 MIDLAND COURT NE VSMB
CEDAR RAPIDS, IOWA 52402 21324-1
(319) 294-9424