

Failure

BRAIN ENGINEERING, INC., 777 10TH STREET, MARION, IOWA 52302 PH. (319) 373-1318

# UNITED STATES PUBLIC LAND SURVEY CORNER CERTIFICATE

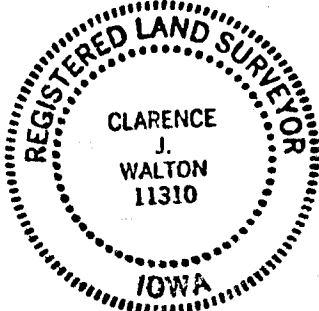
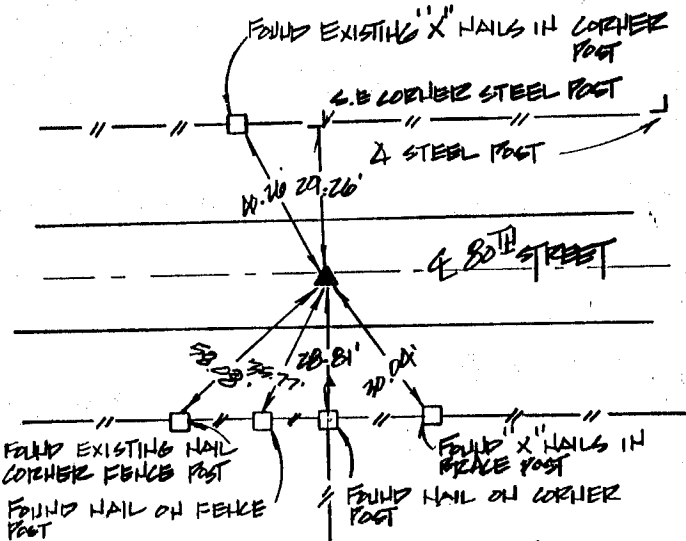
LAND SURVEY MONUMENTS SITUATED IN SECTION 29, TOWNSHIP 84 NORTH RANGE 4 WEST OF THE 5TH P.M., JONES COUNTY, IOWA.

NO SCALE



S 1/4 COR. 29-84-4

N 1/4 32

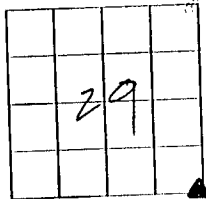


ON Card  
5-23-96

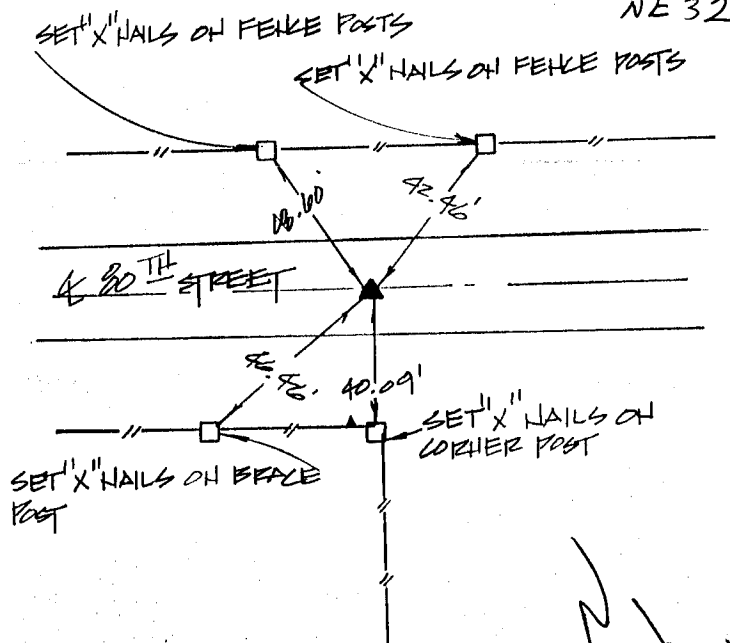
NO SCALE



SE COR. 29-84-4



NE 32



ON Card  
5-23-96

PREVIOUSLY RECORDED IN BOOK \_\_\_\_\_ PAGE \_\_\_\_\_

MONUMENT DESCRIPTION AND HOW ESTABLISHED FOUND  
3/4" PIPE @ THE SURFACE @ THE S 1/4 CORNER OF SEC. 32-  
TW. 84N - RAN. 4TH P.M.

PREVIOUSLY RECORDED IN BOOK \_\_\_\_\_ PAGE \_\_\_\_\_

MONUMENT DESCRIPTION AND HOW ESTABLISHED FOUND  
3/4" PIPE @ THE SURFACE OF 80TH STREET @ THE  
S.E. CORNER OF SEC. 29 T.W. 84N - RAN. 5TH P.M.

84432e-041996  
84432e-041996  
I hereby declare that this plat, survey or report was made by me or under my direct personal supervision and that I am a duly registered Land Surveyor under the laws of the State of Iowa.  
Signed Clarence J. Walton Date 4/19/96  
Clarence J. Walton L.S. Iowa Reg No. 11310  
My Registration Renewal Date Is December 31, 1997

CORNER	SECTION	TOWNSHIP	RANGE
S 1/4	29	84	4
SE COR.	29	84	4

**BRAIN ENGINEERING, INC.**

777 10TH STREET  
MARION, IOWA 52302  
(319) 373-1318