

Instrument #: 2024-0035
 01/05/2024 09:22:44 AM Total Pages: 1
 ZSC SECTION CORNER CERTIFICATE
 Recording Fee: \$7.00 Transfer Tax: \$0
 Sheri L. Jones, Recorder, Jones County Iowa



PREPARED BY
 KEVIN F. BRADSHAW, BRAIN ENGINEERING, INC., 1540 MIDLAND COURT NE, CEDAR RAPIDS, IOWA PH. (319) 294-9424

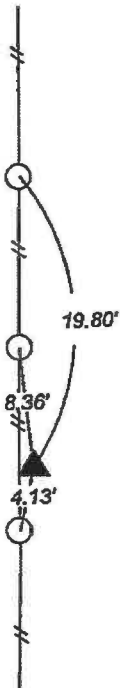
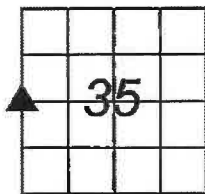
UNITED STATES PUBLIC LAND SURVEY CORNER CERTIFICATE

LAND SURVEY MONUMENTS SITUATED IN SECTION 35, TOWNSHIP 84 NORTH
 RANGE 4 WEST OF THE 5TH P.M., JONES COUNTY, IOWA.

NO SCALE



W 1/4 CORNER

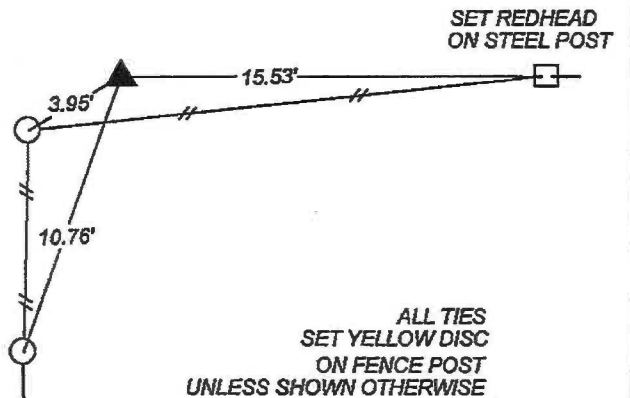
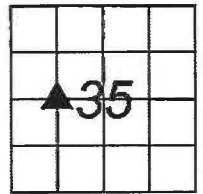


ALL TIES
 SET YELLOW DISC
 ON FENCE POST

NO SCALE



NE CORNER NW 1/4 SW 1/4



ALL TIES
 SET YELLOW DISC
 ON FENCE POST
 UNLESS SHOWN OTHERWISE

PREVIOUSLY RECORDED IN BOOK _____ PAGE _____

MONUMENT DESCRIPTION AND HOW ESTABLISHED _____

SET 1/2" REBAR W/ YELLOW PLASTIC CAP #17543 AT THE MID POINT
 BETWEEN THE NW CORNER OF SECTION 35 AND THE SW CORNER
 OF SECTION 35 IN LINE WITH THE NORTH-SOUTH FENCELINE.

PREVIOUSLY RECORDED IN BOOK _____ PAGE _____

MONUMENT DESCRIPTION AND HOW ESTABLISHED _____

SET 1/2" REBAR W/ YELLOW PLASTIC CAP #17543 AT THE
 MIDPOINT BETWEEN THE W 1/4 CORNER AND THE CENTER OF
 SECTION.



I hereby certify that this land surveying document and the related survey work was performed by me or under my direct personal supervision and that I am a duly licensed Land Surveyor under the laws of the State of Iowa.
 Signed *Kevin F. Bradshaw* Date 12-28-23
 Kevin F. Bradshaw
 My License Renewal Date is December 31, 2024
 License Number 17543
 Pages or sheets covered by this seal: 1/1

- A. THERE IS NO CERTIFICATE FOR THE CORNER ON FILE WITH THE RECORDER OF THE COUNTY IN WHICH THE CORNER IS LOCATED
- B. THE SURVEYOR IN RESPONSIBLE CHARGE OF THE LAND SURVEYING ACCEPTS A CORNER POSITION WHICH DIFFERS FROM THAT SHOWN IN THE PUBLIC RECORDS OF THE COUNTY IN WHICH THE CORNER IS LOCATED.
- C. THE CORNER MONUMENT IS REPLACED OR MODIFIED IN ANY WAY.
- D. THE REFERENCE TIES REFERRED TO IN AN EXISTING PUBLIC RECORD ARE NOT CORRECT.

CORNERS TO BE INDEXED			
CORNER	SECTION	TOWNSHIP	RANGE
W 1/4 CORNER	35	T84N	R4W
NE CORNER NW 1/4 SW 1/4	35	T84N	R4W

BRAIN ENGINEERING, INC.
 1540 MIDLAND COURT NE
 CEDAR RAPIDS, IOWA 52402
 (319) 294-9424

284923-65