

2003 1058

FILED  
RECORDERS OFFICE  
JONES COUNTY IOWA

03 MAR 13 PM 1:01

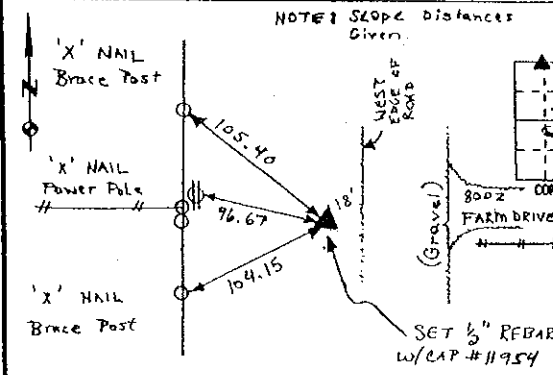
MARIE KRUTZFIELD  
RECORDER 6.00 Pd

PREPARED BY HALL & HALL ENGINEERS, INC. 209 29TH STREET N.E. CEDAR RAPIDS, IOWA 52402 (319) 362-9548

LAND SURVEY MONUMENTS SITUATED IN SECTION 36, TOWNSHIP 84 NORTH,  
RANGE 4 WEST, OF THE FIFTH PRINCIPAL MERIDIAN, JONES COUNTY IOWA.

RECOVERY TIE DRAWING

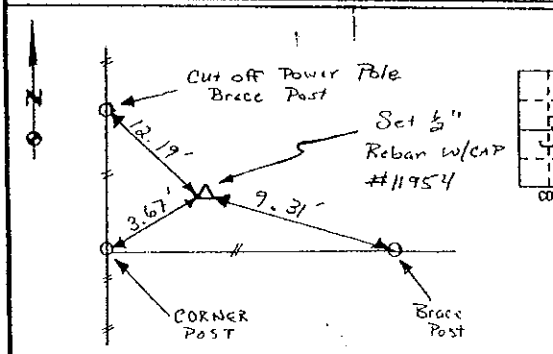
MONUMENT DESCRIPTION AND REMARKS:



N.W. Cor. - NE 1/4 - NW 1/4 Section 36-84-4

REASON FOR PREPARING CERTIFICATE: (A) B, C OR D  
PREVIOUS BOOK \_\_\_\_\_, PAGE \_\_\_\_\_

Set 1/2" REBAR w/ RED CAP L.S.  
#11954 ON FORESLOPE IN LINE  
w/ FENCES EAST & West.  
18' West of Edge of Gravel  
X-40.

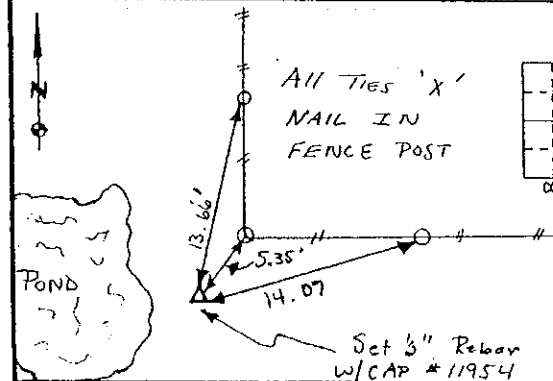


Center Section 36-84-4

REASON FOR PREPARING CERTIFICATE: (A) B, C OR D  
PREVIOUS BOOK \_\_\_\_\_, PAGE \_\_\_\_\_

Set 1/2" Rebar w/ Red L.S. CAP  
#11954 4' NORTH OF FENCE  
EAST & 0.3' E OF FENCE  
NORTH.

All TIES 'X' NAIL IN FENCE POST



N.E. Cor. - S.E. 1/4 - NW 1/4 Sec. 36-84-4

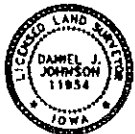
REASON FOR PREPARING CERTIFICATE: (A) B, C OR D  
PREVIOUS BOOK \_\_\_\_\_, PAGE \_\_\_\_\_

Set 1/2" Rebar w/ Red L.S. CAP  
#11954 5'S & 3' W OF  
Corner Post. FLUSH w/  
SURFACE

I hereby certify that this land surveying document was prepared and the related survey work was performed by me or under my direct personal supervision and that I am a duly licensed Land Surveyor under the laws of the State of Iowa.

Signed: Daniel J. Johnson Date: 3-4-03  
 Daniel J. Johnson, L.S. #11954  
 My license renewal date is December 31, 2004

Pages or sheets covered by this seal:  
 (Entire submission unless specified here) 1



REASON FOR PREPARING CERTIFICATE:

- A) THERE IS NO CERTIFICATE FOR THE CORNER ON FILE WITH THE RECORDER OF THE COUNTY IN WHICH THE CORNER IS LOCATED.
- B) CORNER POSITION DIFFERS FROM THAT SHOWN IN THE PUBLIC RECORDS OF THE COUNTY IN WHICH THE CORNER IS LOCATED.
- C) THE CORNER MONUMENT HAS BEEN REPLACED OR MODIFIED.
- D) THE REFERENCE TIES REFERRED TO IN AN EXISTING PUBLIC RECORD ARE INCORRECT OR MISSING.

SHEET NO. U.S. PUBLIC LAND SURVEY CORNER CERTIFICATE

PROJECT NO. Jones County (Morley)

HALL AND HALL ENGINEERS, INC.  
209 29TH STREET N.E.  
CEDAR RAPIDS, IOWA 52402  
(319) 362-9548

DATE: 5/5/00 SCALE: NONE FNO: COUNTY 3 FNO: 6125

2002 3015

FILED  
RECORDERS OFFICE  
JONES COUNTY IOWA

02 AUG 16 PM 12:41

MARIE KRUTZFIELD  
RECORDER 6:00 pm

84436b-081602

84436m-081602

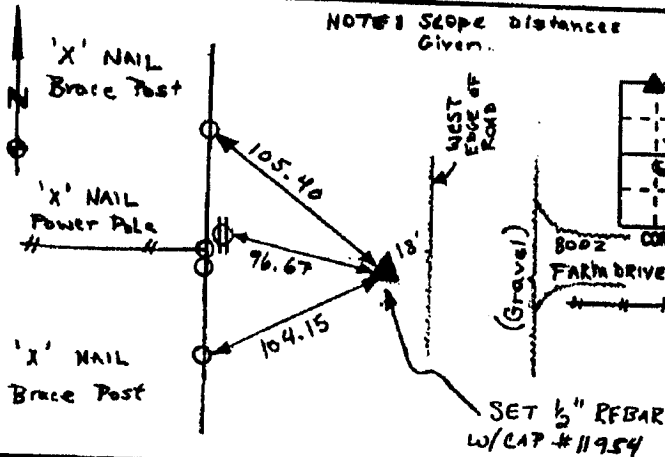
84436h-081602

PREPARED BY HALL & HALL ENGINEERS, INC. 209 29TH STREET N.E. CEDAR RAPIDS, IOWA 52402 (319) 362-9548

LAND SURVEY MONUMENTS SITUATED IN SECTION 36, TOWNSHIP 84 NORTH,  
RANGE 4 WEST, OF THE FIFTH PRINCIPAL MERIDIAN, JONES COUNTY IOWA.

RECOVERY TIE DRAWING

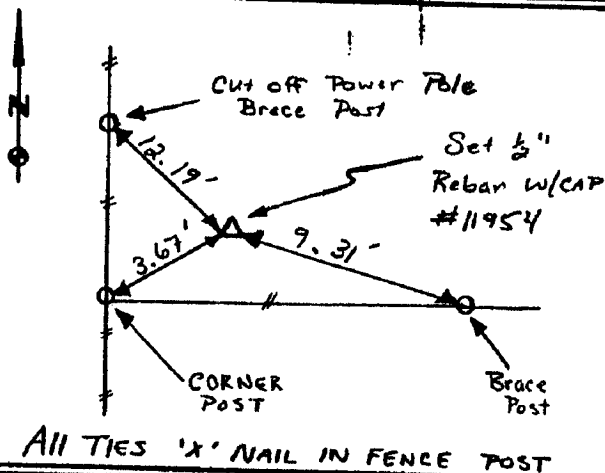
MONUMENT DESCRIPTION AND REMARKS:



NW 1/4 Cor. - NE 1/4 - NW 1/4 Section 36-84-4

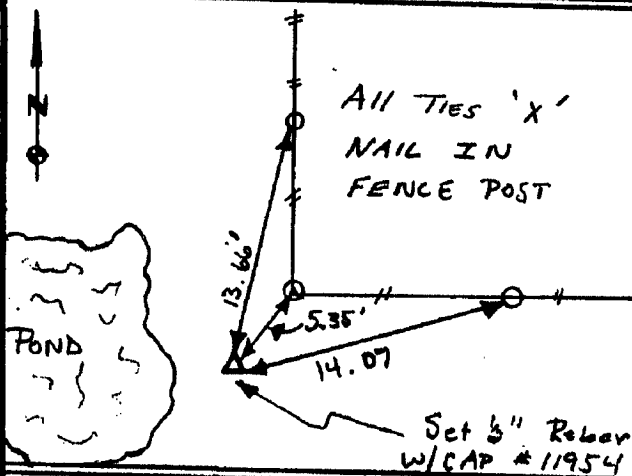
REASON FOR PREPARING CERTIFICATE: (A) B, C OR D  
PREVIOUS BOOK \_\_\_\_\_, PAGE \_\_\_\_\_  
Set 1/2" REBAR W/ RED CAP L.S.  
#11954 ON FORESLOPE IN LINE  
W/ FENCES EAST & West,  
18' West of Edge of Gravel  
X-40.

Center Section 36-84-4



REASON FOR PREPARING CERTIFICATE: (A) B, C OR D  
PREVIOUS BOOK \_\_\_\_\_, PAGE \_\_\_\_\_  
Set 1/2" Rebar w/ Red L.S. CAP  
#11954 4' NORTH OF FENCE  
EAST & 0.3' E OF FENCE  
NORTH.

NE 1/4 Cor. - SE 1/4 - NW 1/4 Sec. 36-84-4



REASON FOR PREPARING CERTIFICATE: (A) B, C OR D  
PREVIOUS BOOK \_\_\_\_\_, PAGE \_\_\_\_\_  
Set 1/2" Rebar w/ Red L.S. CAP  
#11954 5'S & 3' W OF  
Corner Post. FLUSH W/  
SURFACE



I hereby certify that this (land surveying document) was prepared and the related survey work was performed by me or under my direct personal supervision and that I am a duly Licensed Land Surveyor under the laws of the State of Iowa.

Signed: Daniel J. Johnson Date: 8/16/02

Daniel J. Johnson, L.S., 11954  
My license renewal date is December 31, 2002

Pages or sheets covered by this seal:  
(Entire submission unless specified here) 1 of 1

REASON FOR PREPARING CERTIFICATE:

- A) THERE IS NO CERTIFICATE FOR THE CORNER ON FILE WITH THE RECORDER OF THE COUNTY IN WHICH THE CORNER IS LOCATED.
- B) CORNER POSITION DIFFERS FROM THAT SHOWN IN THE PUBLIC RECORDS OF THE COUNTY IN WHICH THE CORNER IS LOCATED.
- C) THE CORNER MONUMENT HAS BEEN REPLACED OR MODIFIED.
- D) THE REFERENCE TIES REFERRED TO IN AN EXISTING PUBLIC RECORD ARE INCORRECT OR MISSING.

SHEET NO.: U.S. PUBLIC LAND SURVEY CORNER CERTIFICATE

PROJECT NO.: Jones County (Morley)



HALL AND HALL ENGINEERS, INC.  
209 29TH STREET N.E.  
CEDAR RAPIDS, IOWA 52402  
(319) 362-9548

N/C

DRAWN BY: ACM

CHECKED BY:

APP'D BY:

DATE: 5/5/00

SCALE: NONE

BOOK NO.: County 3  
PAGE NO.: 6/25