

☐☐
 Jones County Marie Krutzfield Recorder
 Fee Book 2011 1443
 06/02/2011 @0154PM # Pages 1
 ZSC SEC COR CERT
 Total Fees: \$0.00

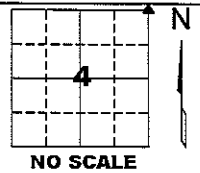
PREPARED BY
 CLARENCE J. WALTON, JONES COUNTY ENGINEER'S OFFICE, 19501 HWY. 64, ANAMOSA, IOWA, 52205 (319) 462-3785

UNITED STATES PUBLIC LAND SURVEY CORNER CERTIFICATE

LAND SURVEY MONUMENTS SITUATED IN SECTION 4, TOWNSHIP 84 NORTH,
 RANGE 4 WEST OF THE 5TH PRINCIPAL MERIDIAN, JONES COUNTY, IOWA.

STATE PLANE COORDINATE
 NAD 83 IOWA NORTH
 N 3515164.48
 E 5516291.63

CORNER SECTION TOWNSHIP RANGE
 NE CORNER 4 T84N R4W



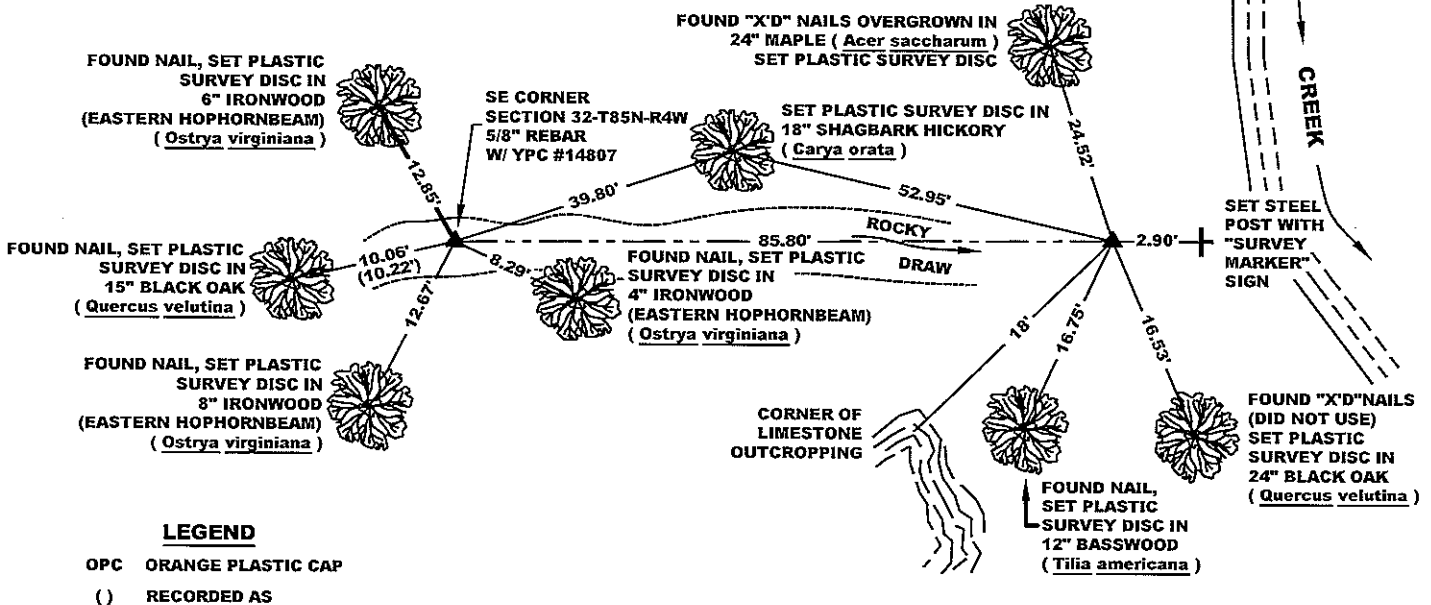
NOTES:

- 1) THE STATE PLANE COORDINATES AS SHOWN ARE FOR CONVENIENCE ONLY. THE TIES AS SHOWN SHOULD BE USED TO REPLACE THE CORNER, IF DESTROYED.
- 2) COORDINATES AS SHOWN ARE GRID COORDINATES AND BASED ON JONES COUNTY G.P.S. CONTROL NETWORK WHICH IN TURN IS BASED ON NAD 83 IOWA NORTH DATUM.
- 3) ALL MEASUREMENTS ARE IN FEET AND DECIMALS THEREOF.
- 4) * GRID DISTANCE, BASED ON JONES COUNTY G.P.S. CONTROL NETWORK.

"SURVEY MARKER" SIGN



SURVEY DISC



LEGEND

- OPC ORANGE PLASTIC CAP
- () RECORDED AS

PREVIOUSLY RECORDED IN RECORDER'S DOCUMENT 2009 0770

MONUMENT DESCRIPTION AND HOW ESTABLISHED FOUND 5/8" REBAR W/ YELLOW PLASTIC CAP #14807 6" ABOVE PRESENT GROUND SURFACE USING PREVIOUSLY RECORDED TIES. SET STEEL FENCE POST WITH "SURVEY MARKER" SIGN FACING WEST 2.90' EAST OF CORNER AS A WITNESS. THIS CORNER IS 2.45 FEET SOUTH OF SOUTH LINE OF THE SE 1/4 OF SECTION 32-T85N-R4W.

FIELD BOOK 333, PAGE 77. DATE OF SURVEY: 4/14/11



I hereby certify that this land surveying document and the related survey work was performed by me or under my direct personal supervision and that I am a duly registered Land Surveyor under the laws of the State of Iowa.

Signed: *Clarence J. Walton* 6/3/11
 Clarence J. Walton, L.S.
 My Registration Renewal Date is December 31, 2011
 Iowa License Number 11310
 Pages or sheets covered by this seal: 1 of 1.

- A. THERE IS NO CERTIFICATE FOR THE CORNER ON FILE WITH THE RECORDER OF THE COUNTY IN WHICH THE CORNER IS LOCATED.
- B. THE CORNER MONUMENT HAS BEEN REPLACED OR MODIFIED.
- C. THE SURVEYOR IN RESPONSIBLE CHARGE OF THE LAND SURVEYING ACCEPTS A CORNER POSITION THAT DIFFERS FROM THAT SHOWN IN THE PUBLIC RECORDS OF THE COUNTY IN WHICH THE CORNER IS LOCATED.
- D. THE REFERENCE TIES REFERRED TO IN AN EXISTING PUBLIC RECORD NO LONGER EXIST.
- E. EXISTING CORNER TIES UPDATED.

CORNERS TO BE INDEXED

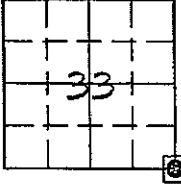
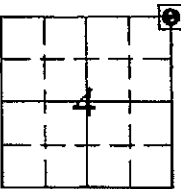
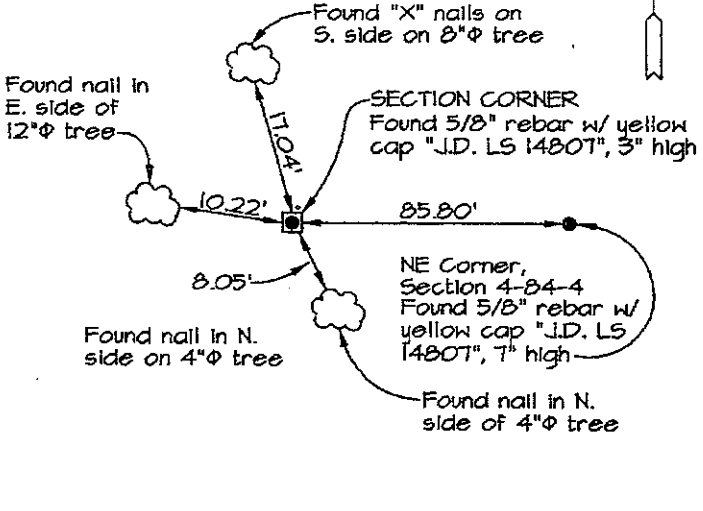
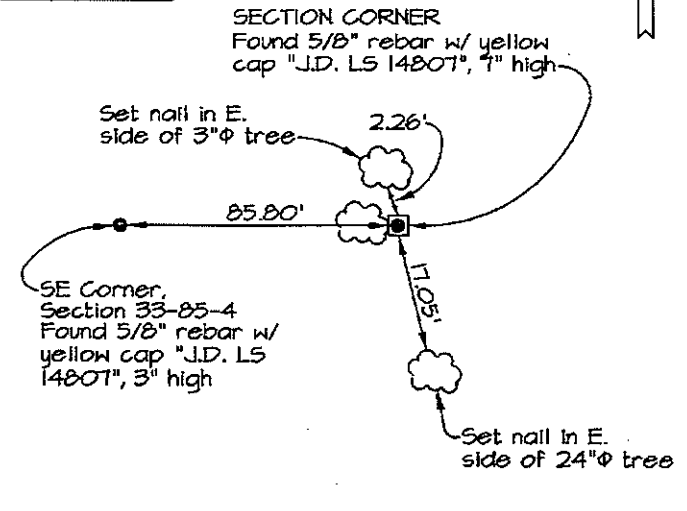
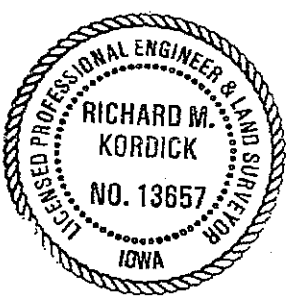
CORNER	SECTION	TOWNSHIP	RANGE
NE CORNER	4	84N	4W
NW CORNER	3	84N	4W

JONES COUNTY ENGINEER'S OFFICE



19501 HWY. 64, ANAMOSA, IOWA 52205
 (319) 462-3785

Prepared by: Richard M. Kordick, P.E., L.S., 689 185th Street Tipton, IA 52772 Phone: (563) 432-6424

U.S. PUBLIC LAND SURVEY CORNER CERTIFICATE	
<div style="display: flex; justify-content: space-between;"> <div style="width: 45%;">  <p>SE Corner 33-85N-4W Jones County CASS Township</p> </div> <div style="width: 45%;">  <p>NE Corner 4-84N-4W Jones County FAIRVIEW Township</p> </div> </div> <div style="display: flex; justify-content: space-around; margin-top: 10px;"> <div style="width: 45%;">  <p>Found "X" nails on S. side on 8"φ tree</p> <p>SECTION CORNER Found 5/8" rebar w/ yellow cap "J.D. LS 1480T", 3" high</p> <p>Found nail in E. side of 12"φ tree</p> <p>Found nail in N. side on 4"φ tree</p> <p>Found nail in N. side of 4"φ tree</p> <p>NE Corner, Section 4-84-4 Found 5/8" rebar w/ yellow cap "J.D. LS 1480T", 7" high</p> </div> <div style="width: 45%;">  <p>SECTION CORNER Found 5/8" rebar w/ yellow cap "J.D. LS 1480T", 7" high</p> <p>Set nail in E. side of 3"φ tree</p> <p>SE Corner, Section 33-85-4 Found 5/8" rebar w/ yellow cap "J.D. LS 1480T", 3" high</p> <p>Set nail in E. side of 24"φ tree</p> </div> </div> <div style="display: flex; justify-content: space-around; margin-top: 10px;"> <p>Plan-View No Scale</p> <p>Plan-View No Scale</p> </div>	<p>Reason for corner tie:</p> <p><input checked="" type="checkbox"/> D) Reference ties in previously recorded certificate recorded in book 293, page 324 are incorrect or missing.</p>
<p>Reason for corner tie:</p> <p><input checked="" type="checkbox"/> D) Reference ties in previously recorded certificate recorded in book 314, page 344 are incorrect or missing.</p>	<p>Reason for corner tie:</p> <p><input checked="" type="checkbox"/> D) Reference ties in previously recorded certificate recorded in book 314, page 344 are incorrect or missing.</p>
<p>Research at the recorder's office, auditor's office, and engineer's office revealed the following: A corner tie certificate in Jones County Recorder's called for a "Set 5/8" Iron rod" at this corner. Plats in Recorder's Bk. 320 - Pg. 240 and Bk. 393 - Pg. 122 called for a "F.D. 5/8" Iron pin" at this corner. A plat in Recorder's Doc. No. 2006-0573 called for corner being destroyed, replaced with 5/8"x24" rebar w/ yellow cap LS 1480T</p>	<p>Research at the recorder's office, auditor's office, and engineer's office revealed the following: A corner tie certificate in Jones County Recorder's Bk. 314 - Pg. 344 called for a "Set 1/2" rebar" at this corner. A plat in Recorder's Doc. No. 2005-1613 referenced this corner. A plat in Recorder's Bk. 320 - Pg. 240 called for a "Set 1/2" rebar w/ cap No. 8165" at this corner. A plat in Recorder's Office Bk. 393 - Pg. 122 called for a "F.D. 1/2" rebar w/ Cap No. 8165" at this corner. A plat in Recorder's Doc. No. 2006-0573 called for corner being destroyed, replaced with 5/8"x24" rebar w/ yellow cap LS 1480T.</p>
<p>Field search performed was as follows: Field search was performed with a metal detector.</p>	<p>Field search performed was as follows: Field search was performed with a metal detector.</p>
<p>Monument found or set: A 5/8" rebar w/ yellow cap "J.D. LS 1480T" was found and used as the corner.</p>	<p>Monument found or set: A 5/8" rebar w/ yellow cap "J.D. LS 1480T" was found and used as the corner.</p>
<div style="display: flex; align-items: center;">  <p>I hereby certify that this land surveying document was prepared and the related survey work was performed by me or under my direct personal supervision and that I am a duly licensed Land Surveyor under the laws of the State of Iowa.</p> <p style="text-align: right; margin-right: 20px;"><i>Richard M. Kordick</i> 3/2/2009 date</p> <p>Richard M. Kordick License number 13657 My license renewal date is December 31, 2009. Pages or sheets covered by this seal: 1 of 1</p> </div>	<p>LEGEND:</p> <ul style="list-style-type: none"> Section Corner as noted Power Pole Section line Centerline Existing Fence Recorded Dist.
<p>Kordick Surveying & Engineering 689 185th Street Tipton, IA 52772 (563) 432-6424</p>	<p style="text-align: center;">U.S. Public Land Survey Corner Certificate</p> <p>Project: Plat of Survey Parcel No. 2006-16 Proprietor: Everette E. Custis</p>
<p>Field BK 08092 Date 3-2-09 Job No. 08092 Sheet 1 of 1</p>	

SECTION CORNER CERTIFICATE

OF
 LAND SURVEY MONUMENTS SITUATED IN SECTION 4, TOWNSHIP 84 NORTH,
 RANGE 4 WEST, OF THE FIFTH PRINCIPAL MERIDIAN, JONES, COUNTY, IOWA.

PREVIOUSLY RECORDED IN BOOK _____ AT PAGE _____

FOR RECORDER'S USE

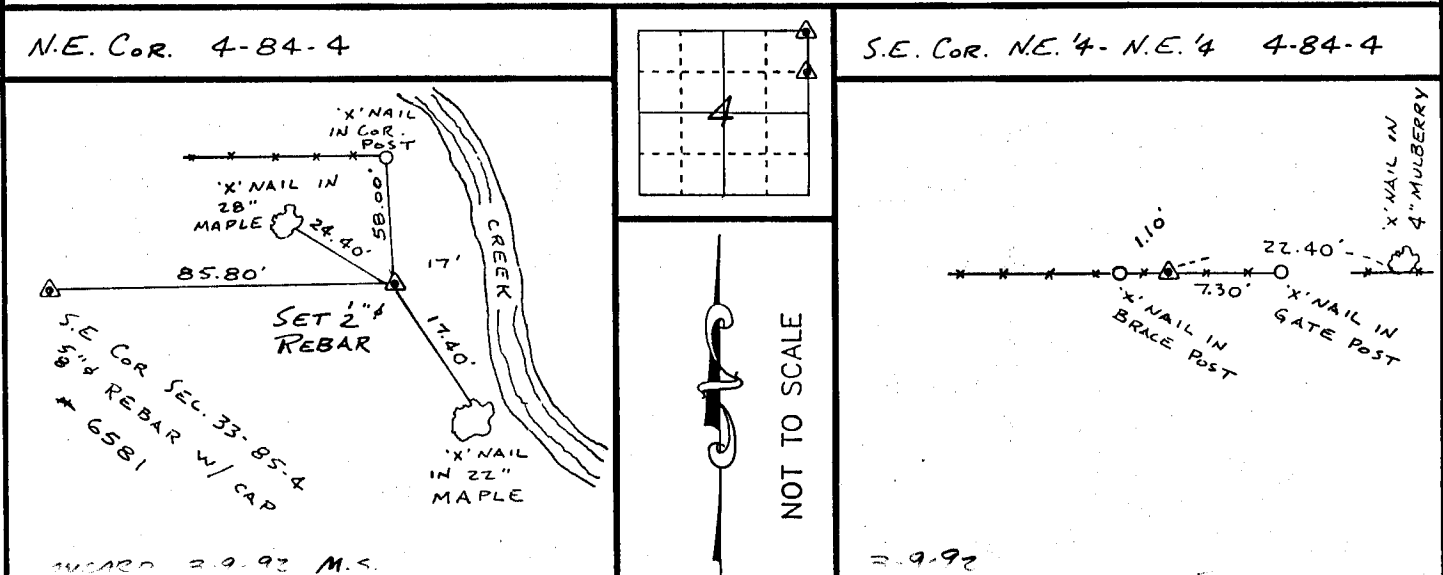
REASON FOR PREPARING CERTIFICATE:

- A) THERE IS NO CERTIFICATE FOR THE CORNER ON FILE WITH THE RECORDER OF THE COUNTY IN WHICH THE CORNER IS LOCATED.
- B) CORNER POSITION DIFFERS FROM THAT SHOWN IN THE PUBLIC RECORDS OF THE COUNTY IN WHICH THE CORNER IS LOCATED.
- C) THE CORNER MONUMENT HAS BEEN REPLACED OR MODIFIED.
- D) THE REFERENCE TIES REFERRED TO IN AN EXISTING PUBLIC RECORD ARE INCORRECT.

MONUMENT DESCRIPTION AND REMARKS:

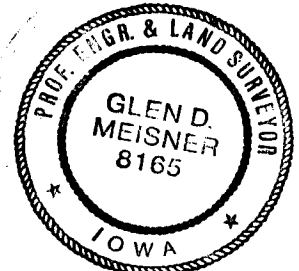
N.E. CORNER SECTION 4-T84N-R4W SET 1/2" # REBAR WITH U.S. CAP.
 # 8165 FLUSH WITH GROUND 85.80' EAST OF S.E. COR. SEC. 33-85-4
 AND 17.00' ± WEST OF WEST EDGE CREEK
 S.E. CORNER NE 1/4 - NE 1/4 SECTION 4-T84N-R4W SET 1/2" # REBAR WITH U.S. CAP
 # 8165 ON EAST-WEST FENCE FLUSH WITH GROUND

RECOVERY TIE DRAWING



I, GLEN D. MEISNER, -CERTIFY THAT THE CORNER LOCATION(S) SHOWN ON THIS RECORD WERE DETERMINED BY ME OR UNDER MY DIRECTION AND CONTROL AND THAT THIS U.S. PUBLIC LAND SURVEY MONUMENT RECORD IS CORRECT AND COMPLETE TO THE BEST OF MY KNOWLEDGE AND BELIEF.

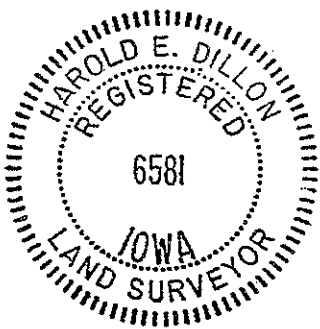
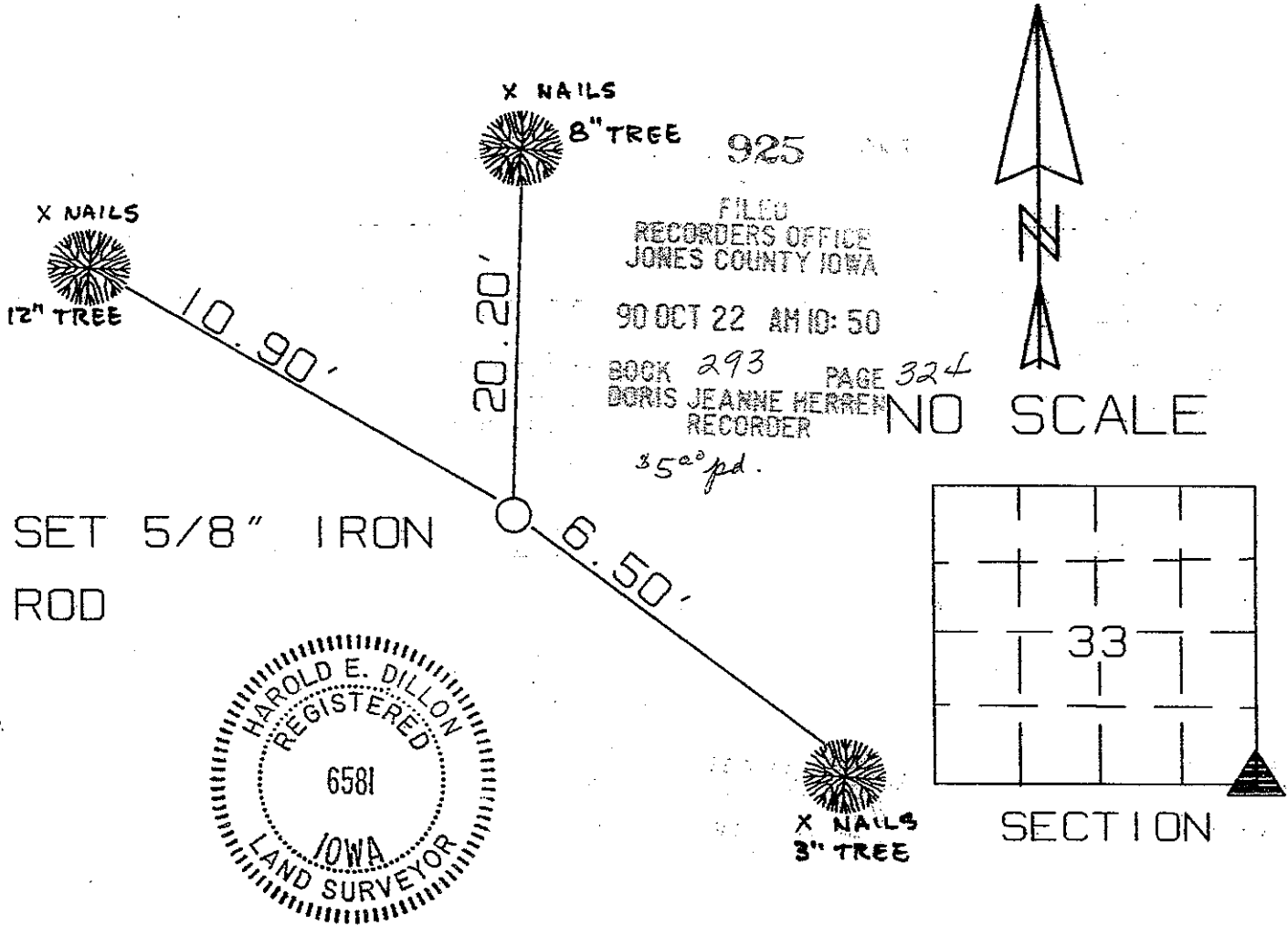
Glen D. Meisner 1-20-92
 GLEN D. MEISNER L.S. NO 8165 DATE



DZFMGL	GOVERNMENT CORNER 5/8" TIE PIN SET CENTERLINE EXISTING FENCE LINE R.O.W. LINE	SHEET TITLE: U.S. PUBLIC LAND SURVEY RECORD PROJECT TITLE: GEORGE CASPERS SURVEY		HALL AND HALL ENGINEERS, INC. 226 29TH STREET DRIVE S.E. CEDAR RAPIDS, IOWA 52403 319-362-9548		
	DW N R.W.B.	CHK G.D.M.		APP	DATE 1-17-92	SCALE NONE

UNITED STATES PUBLIC LAND SURVEY CORNER CERTIFICATE

LAND SURVEY MONUMENT LOCATED IN SECTION 33 TOWNSHIP 85
NORTH, RANGE 4 WEST OF THE 5TH P.M. JONES COUNTY, IOWA
PREVIOUSLY RECORDED IN BOOK NA___ ON PAGE NA___



MONUMENT DESCRIPTION AND NARRATIVE SE CORNER SEC 33-85-4
RESET BY PROPORTIONATE MEASUREMENT

HEREBY CERTIFY THAT THE HEREON DEPICTED SURVEY TIE WORK WAS COMPLETED BY ME OR UNDER MY DIRECT PERSONAL SUPERVISION AND THAT I AM A DULY REGISTERED LAND SURVEYOR UNDER THE LAWS OF THE STATE OF IOWA.

Harold E Dillon
Harold E. Dillon 10/22/90