

THIS IS NOT A CERTIFICATION

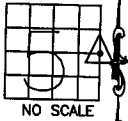
JONES COUNTY ENGINEER'S OFFICE, 19501 HWY. 64, ANAMOSA, IOWA, 52205 (319)462-3785

UNITED STATES PUBLIC LAND SURVEY CORNER CERTIFICATE

LAND SURVEY MONUMENTS SITUATED IN SECTION 5, TOWNSHIP 84
NORTH, RANGE 4 WEST OF THE 5TH P.M., JONES COUNTY, IOWA

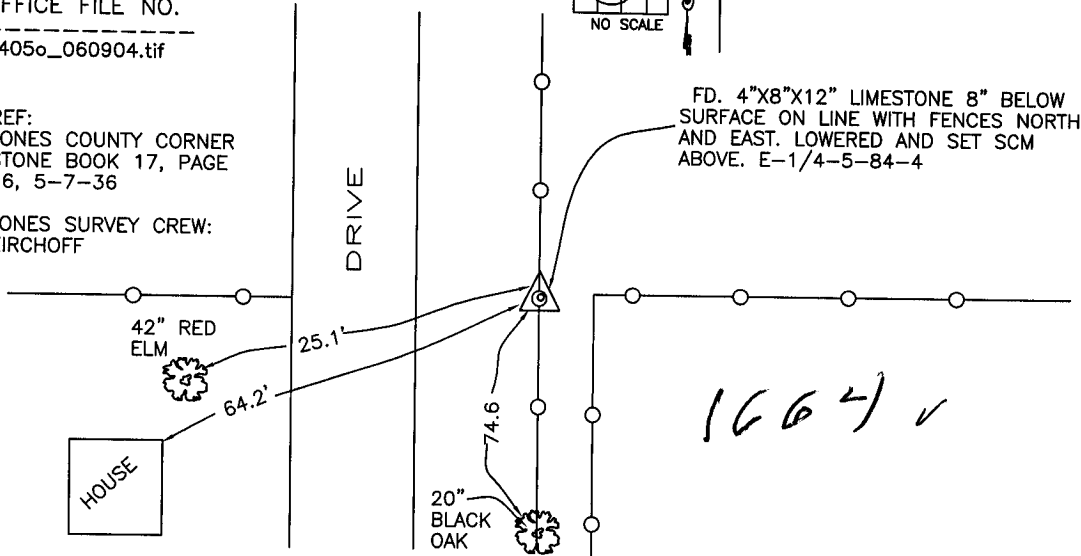
CORNERS TO BE INDEXED

CORNER SECTION TOWNSHIP RANGE
E-QUARTER 5 84N 4W
OFFICE FILE NO.
84405o_060904.tif



REF:
JONES COUNTY CORNER
STONE BOOK 17, PAGE
16, 5-7-36

JONES SURVEY CREW:
KIRCHOFF



FD. 4"x8"x12" LIMESTONE 8" BELOW
SURFACE ON LINE WITH FENCES NORTH
AND EAST. LOWERED AND SET SCM
ABOVE. E-1/4-5-84-4

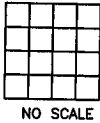
(664) ✓

PREVIOUSLY RECORDED IN BOOK _____, PAGE _____
MONUMENT DESCRIPTION AND HOW ESTABLISHED _____ FOUND _____

4"x8"x12" LIMESTONE 8" BELOW SURFACE ON LINE WITH FENCES NORTH
AND EAST. LOWERED STONE, SET STANDARD CONCRETE MONUMENT ABOVE,
EAST QUARTER CORNER, SECTION 5, TOWNSHIP 84 NORTH, RANGE 4 WEST
OF THE 5TH PRINCIPAL MERIDIAN, JONES COUNTY, IOWA.

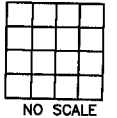
CORNERS TO BE INDEXED

CORNER SECTION TOWNSHIP RANGE
OFFICE FILE NO.



CORNERS TO BE INDEXED

CORNER SECTION TOWNSHIP RANGE
OFFICE FILE NO.



PREVIOUSLY RECORDED IN BOOK _____, PAGE _____
MONUMENT DESCRIPTION AND HOW ESTABLISHED _____

PREVIOUSLY RECORDED IN BOOK _____, PAGE _____
MONUMENT DESCRIPTION AND HOW ESTABLISHED _____

~~I hereby declare that this plat, survey or report
was made by me or under my direct personal
supervision and that I am a duly registered Land
Surveyor under the laws of the State of Iowa.~~

Signed: _____

SEAL

JONES COUNTY
ENGINEER'S OFFICE

19501 HWY. 64,
ANAMOSA, IOWA,
52205 (319)462-3785

D