

2005 0238

FILED  
RECORDERS OFFICE  
JONES COUNTY IOWA

05 JAN 19 PM 1:10

MARIE KRUTZFIELD  
RECORDER *No Fee*

J.D. TJEPKES, LS. JONES COUNTY ENGINEER'S OFFICE, 19501 HWY. 64, ANAMOSA, IOWA, 52205 (319)462-3785

# UNITED STATES PUBLIC LAND SURVEY CORNER CERTIFICATE

LAND SURVEY MONUMENTS SITUATED IN SECTION ~~8~~<sup>6</sup> TOWNSHIP 84  
NORTH, RANGE 4 WEST OF THE 5TH P.M., JONES COUNTY, IOWA

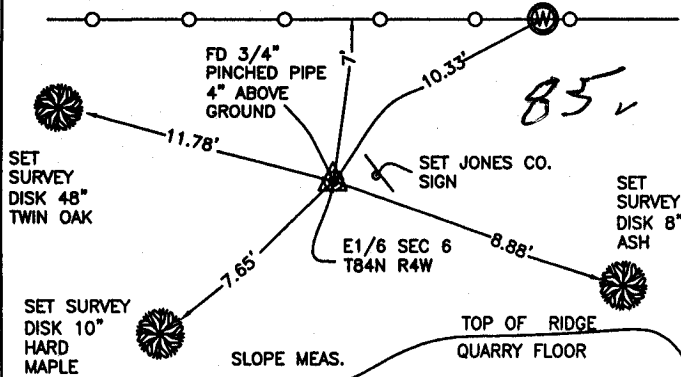
### CORNERS TO BE INDEXED

CORNER SECTION TOWNSHIP RANGE  
E1/4 6 84N 4W

OFFICE FILE NO.

84406o\_111904.tif

FIELD NOTES:  
11-17-2004  
BK 233  
P29



PREVIOUSLY RECORDED IN BOOK NA, PAGE NA  
MONUMENT DESCRIPTION AND HOW ESTABLISHED \_\_\_\_\_  
PER TIES ON RECORD AT JONES CO. ENGINEER'S OFFICE,  
(MEISNER 1-22-1992), FOUND 3/4" PINCHED PIPE 4" ABOVE  
GROUND. SET JONES CO. SIGN AND RETIED AS INDICATED. E1/4  
SECTION 6 T84N R4W.

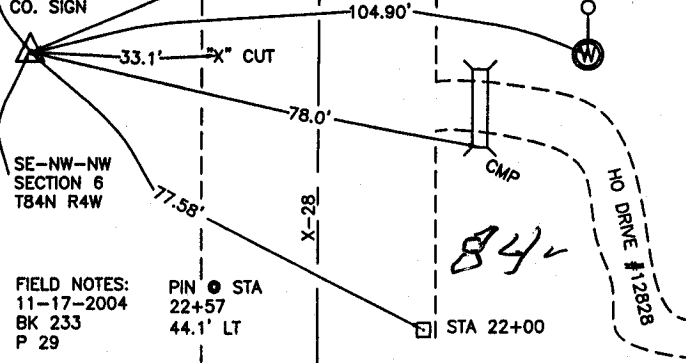
### CORNERS TO BE INDEXED

CORNER SECTION TOWNSHIP RANGE  
SE-NE-NE 6 84N 4W

OFFICE FILE NO.

84406j\_111904.tif

SET 5/8"x24"  
REBAR W/CAP  
14807 & JONES  
CO. SIGN



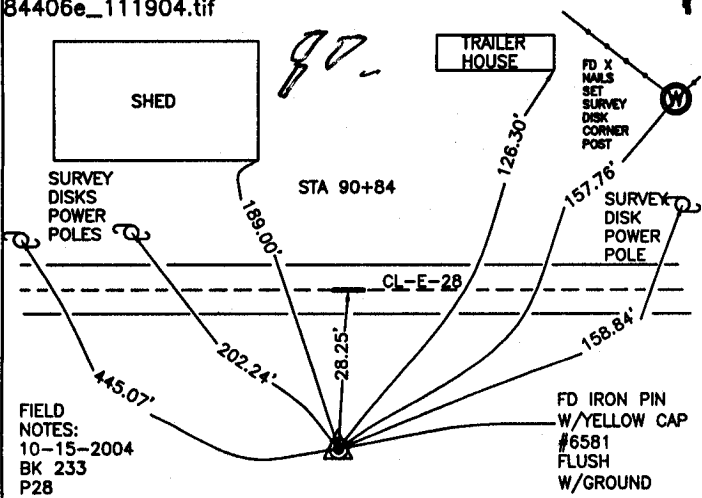
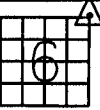
PREVIOUSLY RECORDED IN BOOK NA, PAGE NA  
MONUMENT DESCRIPTION AND HOW ESTABLISHED \_\_\_\_\_  
PER TIES ON RECORD AT JONES CO. ENGINEER'S OFFICE,  
(DILLON 12-22-1993), RESET 5/8"x24" REBAR W/CAP #14807,  
2" ABOVE GROUND. SET JONES CO. SIGN AND RETIED AS  
INDICATED. SE-NE-NE SECTION 6 T84N R4W.

### CORNERS TO BE INDEXED

CORNER SECTION TOWNSHIP RANGE  
NE 6 84N 4W

OFFICE FILE NO.

84406e\_111904.tif

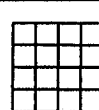


PREVIOUSLY RECORDED IN BOOK NA, PAGE NA  
MONUMENT DESCRIPTION AND HOW ESTABLISHED \_\_\_\_\_  
PER FOUND TIES, FOUND IRON PIN W/YELLOW CAP #6581 ON  
FORESLOPE OF E-28. RETIED AS INDICATED. NE COR. SEC. 6  
T84N R4W.

### CORNERS TO BE INDEXED

CORNER SECTION TOWNSHIP RANGE

OFFICE FILE NO.



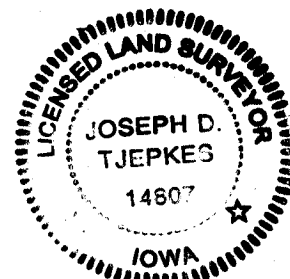
PREVIOUSLY RECORDED IN BOOK \_\_\_\_\_, PAGE \_\_\_\_\_  
MONUMENT DESCRIPTION AND HOW ESTABLISHED \_\_\_\_\_

I hereby declare that this plat, survey or report was made by me or under my direct personal supervision and that I am a duly registered Land Surveyor under the laws of the State of Iowa.

Signed: *[Signature]* 1-19-05

Joseph D. Tjepkes L.S. Iowa Reg. No. 14807  
My Registration Renewal Date is December 31, 2006

SEAL



J.D. TJEPKES LS 14807  
JONES COUNTY  
ENGINEER'S OFFICE

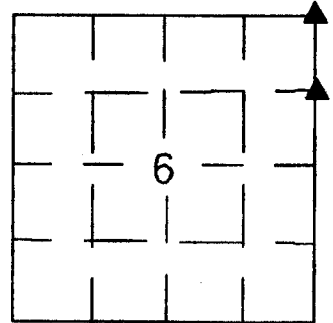
19501 HWY. 64,  
ANAMOSA, IOWA,  
52205 (319)462-3785

E

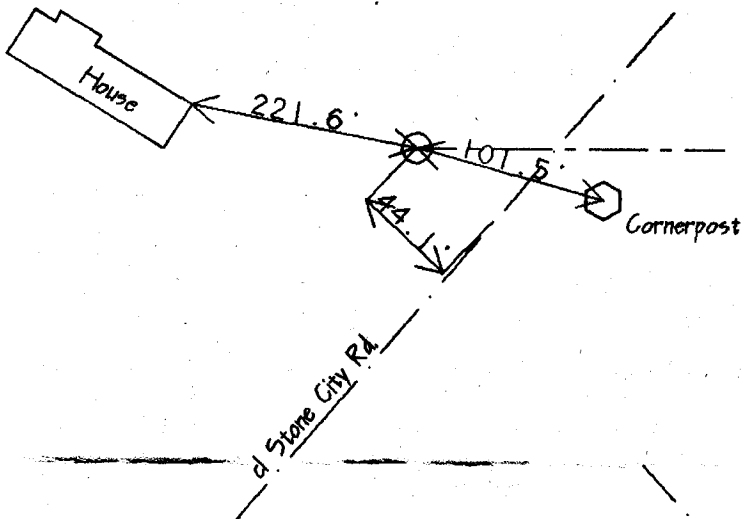
# United States Public Land Survey Corner Certificate

Land survey corner in Section 6 Township 84 North  
Range 4 West of the 5th Principal Meridian  
Jones County, Iowa.

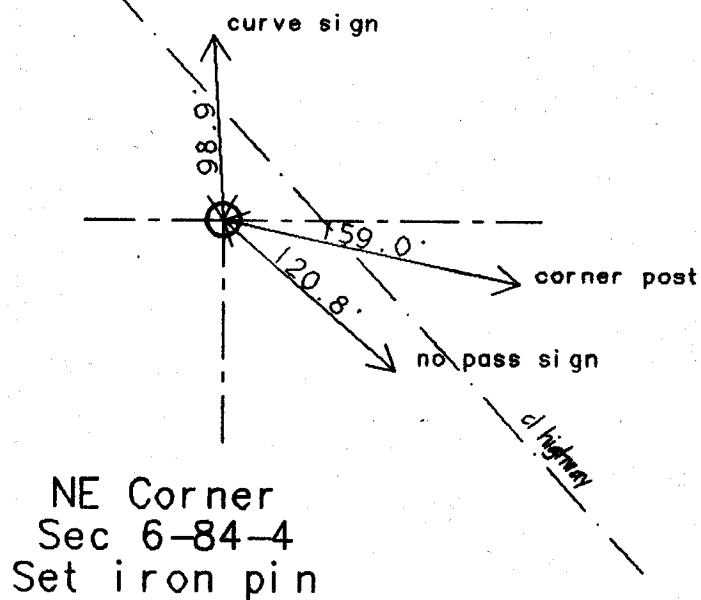
No Scale



SECTION



SE Cor NE NE  
Sec 6-84-4  
Set I.P.



NE Corner  
Sec 6-84-4  
Set iron pin

**Certification**

I hereby certify that this plat and survey was made by me or under my direct supervision and that I am a duly Registered Land Surveyor under the laws of the State of Iowa.

Harold E. Dillon  
Harold E. Dillon Reg.#6581

12/22/93

date



Dillon Surveying 2012 - 9th Street Coralville, IA 52241 (319) 351-5647 JOB#

84406e - 122293

84406j - 122293