

2005 0238

FILED
RECORDERS OFFICE
JONES COUNTY IOWA

05 JAN 19 PM 1:10

MARIE KRUTZFIELD
RECORDER *No Fee*

J.D. TJEPKES, LS. JONES COUNTY ENGINEER'S OFFICE, 19501 HWY. 64, ANAMOSA, IOWA, 52205 (319)462-3785

UNITED STATES PUBLIC LAND SURVEY CORNER CERTIFICATE

LAND SURVEY MONUMENTS SITUATED IN SECTION ~~8~~ ⁵ ~~6~~ ⁵ TOWNSHIP 84
NORTH, RANGE 4 WEST OF THE 5TH P.M., JONES COUNTY, IOWA

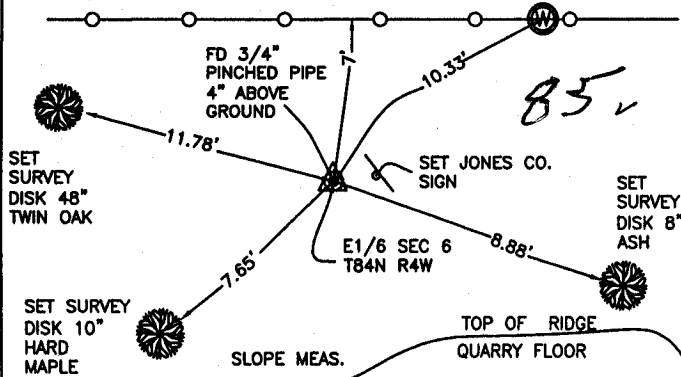
CORNERS TO BE INDEXED

CORNER SECTION TOWNSHIP RANGE
E1/4 6 84N 4W

OFFICE FILE NO.

84406o_111904.tif

FIELD NOTES:
11-17-2004
BK 233
P29



PREVIOUSLY RECORDED IN BOOK NA, PAGE NA
MONUMENT DESCRIPTION AND HOW ESTABLISHED _____
PER TIES ON RECORD AT JONES CO. ENGINEER'S OFFICE,
(MEISNER 1-22-1992), FOUND 3/4" PINCHED PIPE 4" ABOVE
GROUND. SET JONES CO. SIGN AND RETIED AS INDICATED. E1/4
SECTION 6 T84N R4W.

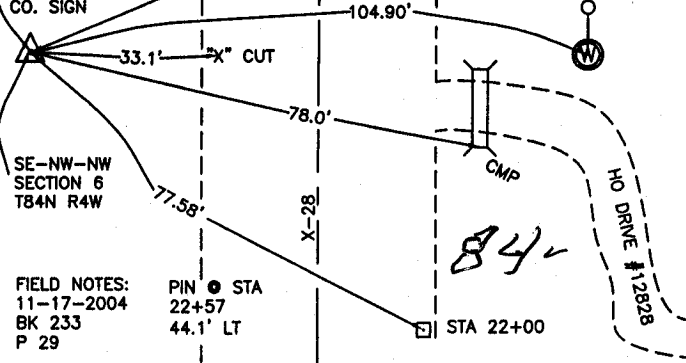
CORNERS TO BE INDEXED

CORNER SECTION TOWNSHIP RANGE
SE-NE-NE 6 84N 4W

OFFICE FILE NO.

84406j_111904.tif

SET 5/8"x24"
REBAR W/CAP
14807 & JONES
CO. SIGN



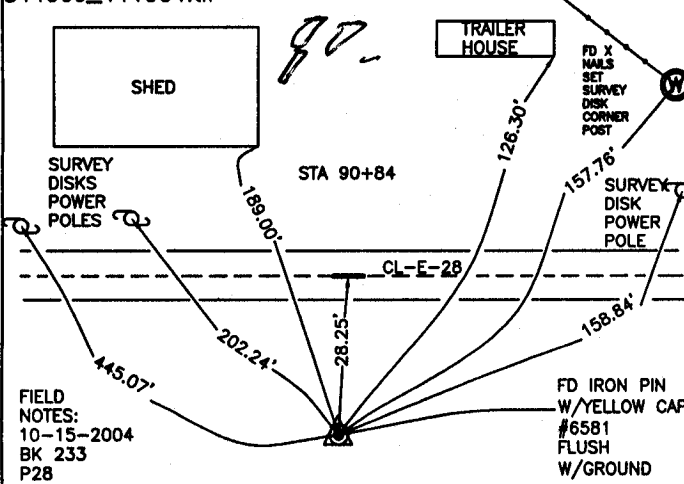
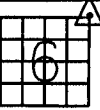
PREVIOUSLY RECORDED IN BOOK NA, PAGE NA
MONUMENT DESCRIPTION AND HOW ESTABLISHED _____
PER TIES ON RECORD AT JONES CO. ENGINEER'S OFFICE,
(DILLON 12-22-1993), RESET 5/8"x24" REBAR W/CAP #14807,
2" ABOVE GROUND. SET JONES CO. SIGN AND RETIED AS
INDICATED. SE-NE-NE SECTION 6 T84N R4W.

CORNERS TO BE INDEXED

CORNER SECTION TOWNSHIP RANGE
NE 6 84N 4W

OFFICE FILE NO.

84406e_111904.tif

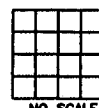


PREVIOUSLY RECORDED IN BOOK NA, PAGE NA
MONUMENT DESCRIPTION AND HOW ESTABLISHED _____
PER FOUND TIES, FOUND IRON PIN W/YELLOW CAP #6581 ON
FORESLOPE OF E-28. RETIED AS INDICATED. NE COR. SEC. 6
T84N R4W.

CORNERS TO BE INDEXED

CORNER SECTION TOWNSHIP RANGE

OFFICE FILE NO.



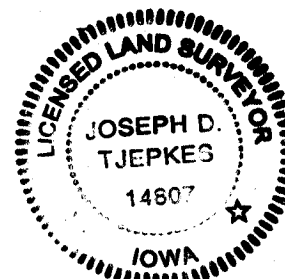
PREVIOUSLY RECORDED IN BOOK _____, PAGE _____
MONUMENT DESCRIPTION AND HOW ESTABLISHED _____

I hereby declare that this plat, survey or report was made by me or under my direct personal supervision and that I am a duly registered Land Surveyor under the laws of the State of Iowa.

Signed: *[Signature]* 1-19-05

Joseph D. Tjepkes L.S. Iowa Reg. No. 14807
My Registration Renewal Date is December 31, 2006

SEAL



J.D. TJEPKES LS 14807
JONES COUNTY
ENGINEER'S OFFICE

19501 HWY. 64,
ANAMOSA, IOWA,
52205 (319)462-3785

E

SECTION CORNER CERTIFICATE

OF
 LAND SURVEY MONUMENTS SITUATED IN SECTION 6, TOWNSHIP 84 NORTH,
 RANGE 4 WEST, OF THE FIFTH PRINCIPAL MERIDIAN, JONES, COUNTY, IOWA.

PREVIOUSLY RECORDED IN BOOK _____ AT PAGE _____.

FOR RECORDER'S USE

REASON FOR PREPARING CERTIFICATE:

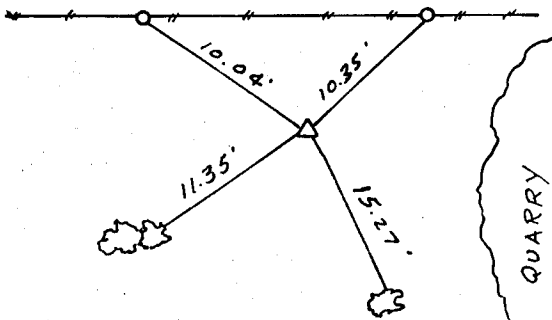
- A) THERE IS NO CERTIFICATE FOR THE CORNER ON FILE WITH THE RECORDER OF THE COUNTY IN WHICH THE CORNER IS LOCATED.
- B) CORNER POSITION DIFFERS FROM THAT SHOWN IN THE PUBLIC RECORDS OF THE COUNTY IN WHICH THE CORNER IS LOCATED.
- C) THE CORNER MONUMENT HAS BEEN REPLACED OR MODIFIED.
- D) THE REFERENCE TIES REFERRED TO IN AN EXISTING PUBLIC RECORD ARE INCORRECT.

MONUMENT DESCRIPTION AND REMARKS :

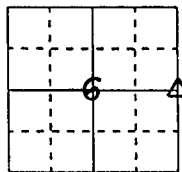
E '4 CORNER SECTION 6-T84 N. R4W FOUND 3/4" PINCHED
GAS PIPE 6" ABOVE GROUND 7.00' SOUTH OF EAST-
WEST FC. LINE 30' ± WEST OF TOP OF QUARRY BANK

RECOVERY TIE DRAWING

E '4 Cor. 6-84-4



ON CARD 2-6-92



NOT TO SCALE

I, GLEN D. MEISNER, CERTIFY THAT THE CORNER LOCATION(S) SHOWN ON THIS RECORD WERE DETERMINED BY ME OR UNDER MY DIRECTION AND CONTROL AND THAT THIS U.S. PUBLIC LAND SURVEY MONUMENT RECORD IS CORRECT AND COMPLETE TO THE BEST OF MY KNOWLEDGE AND BELIEF.



Glen D. Meisner 1-22-92
 GLEN D. MEISNER L.S. NO 8165 DATE

DZRGQEL	△ GOVERNMENT CORNER ○ 5/8" TIE PIN SET --- CENTERLINE -x- EXISTING FENCE LINE - - - R.O.W. LINE	SHEET TITLE: U.S. PUBLIC LAND SURVEY RECORD PROJECT TITLE: <u>AGNUS COLLMAN SURVEY</u>	HALL AND HALL ENGINEERS, INC. 226 29TH STREET DRIVE S.E. CEDAR RAPIDS, IOWA 52403 319-362-9548
	DWN <u>R.W.B</u>	CHK <u>G.D.M.</u> APP _____ DATE <u>11-15-91</u> SCALE <u>NONE</u> FNO <u>0T23</u> PNO <u>4562</u>	

844060 - 012292