

PREPARED BY
 CLARENCE J. WALTON, JONES COUNTY ENGINEER'S OFFICE, 19501 HWY. 64, ANAMOSA, IOWA, 52205 (319) 462-3785

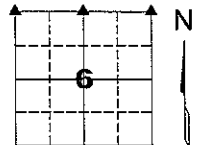
UNITED STATES PUBLIC LAND SURVEY CORNER CERTIFICATE

LAND SURVEY MONUMENTS SITUATED IN SECTION 6, TOWNSHIP 84 NORTH,
 RANGE 4 WEST OF THE 5TH PRINCIPAL MERIDIAN, JONES COUNTY, IOWA.

OFFICE FILE NO.

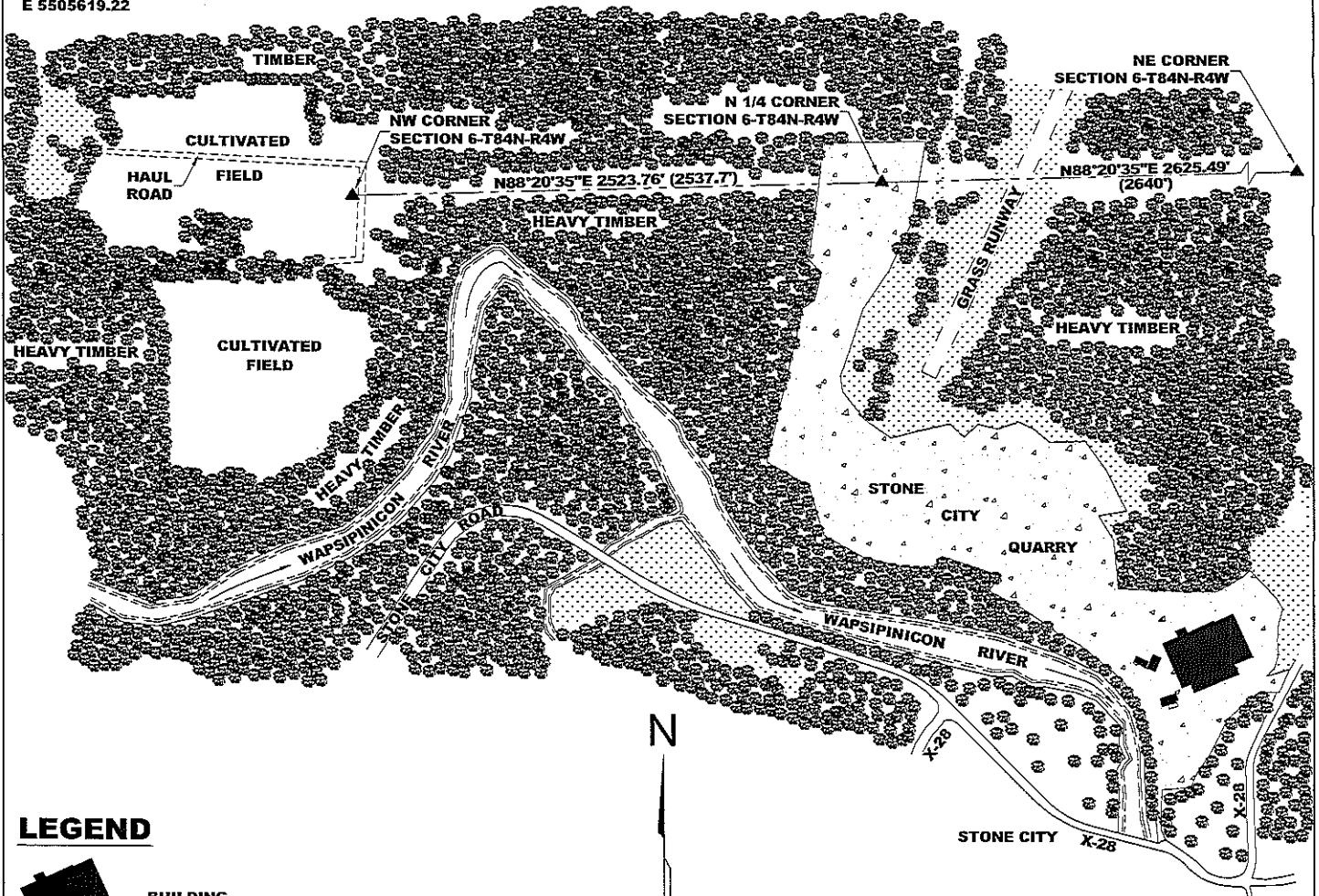
NW CORNER SECTION 6-T84N-R4W
 STATE PLANE COORDINATE
 NAD 83 IOWA NORTH
 N 3514798.40
 E 5500472.12

CORNER	SECTION	TOWNSHIP	RANGE	
NW	6	T84N	R4W	PAGE 2 of 4
N 1/4	6	T84N	R4W	
NE	6	T84N	R4W	PAGE 3 of 4



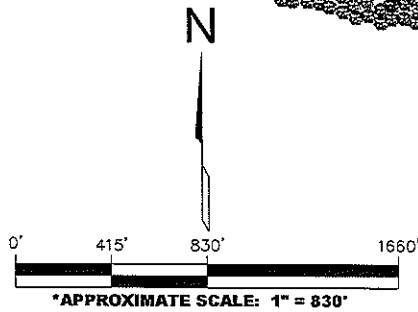
N 1/4 CORNER SECTION 6-T84N-R4W
 STATE PLANE COORDINATE
 NAD 83 IOWA NORTH
 N 3514871.37
 E 5502994.83

NE CORNER SECTION 6-T84N-R4W
 STATE PLANE COORDINATE
 NAD 83 IOWA NORTH
 N 3514947.29
 E 5505619.22



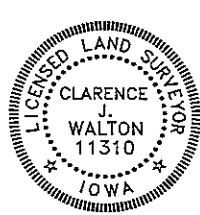
LEGEND

- BUILDING
- HARDWOOD TIMBER
- STONE CITY QUARRY PROPER
- GRASSED AREA



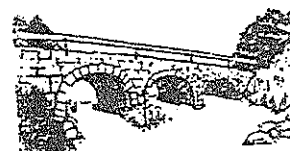
VICINITY MAP

* NOTE:
 APPROXIMATE SCALE IS GIVEN IN
 ORDER TO FACILITATE NAVIGATION TO
 CORNERS IN CASE GPS IS NOT IN USE.



I hereby certify that this land surveying document and the related survey work was performed by me or under my direct personal supervision and that I am a duly registered Land Surveyor under the laws of the State of Iowa.
 Signed: *Clarence J. Walton* 7/30/09
 Clarence J. Walton, L.S.
 My Registration Renewal Date is December 31, 2009
 Iowa License Number 11310
 Pages or sheets covered by this seal: 1 of 4

JONES COUNTY ENGINEER'S OFFICE



19501 HWY. 64, ANAMOSA, IOWA 52205
 (319) 462-3785

UNITED STATES PUBLIC LAND SURVEY CORNER CERTIFICATE

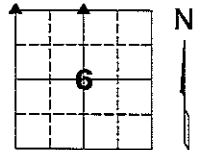
LAND SURVEY MONUMENTS SITUATED IN SECTION 6, TOWNSHIP 84 NORTH,
 RANGE 4 WEST OF THE 5TH PRINCIPAL MERIDIAN, JONES COUNTY, IOWA.

OFFICE FILE NO.

NW CORNER SECTION 6-T84N-R4W
 STATE PLANE COORDINATE
 NAD 83 IOWA NORTH
 N 3514798.40
 E 5500472.12

N 1/4 CORNER SECTION 6-T84N-R4W
 STATE PLANE COORDINATE
 NAD 83 IOWA NORTH
 N 3514871.37
 E 5502994.83

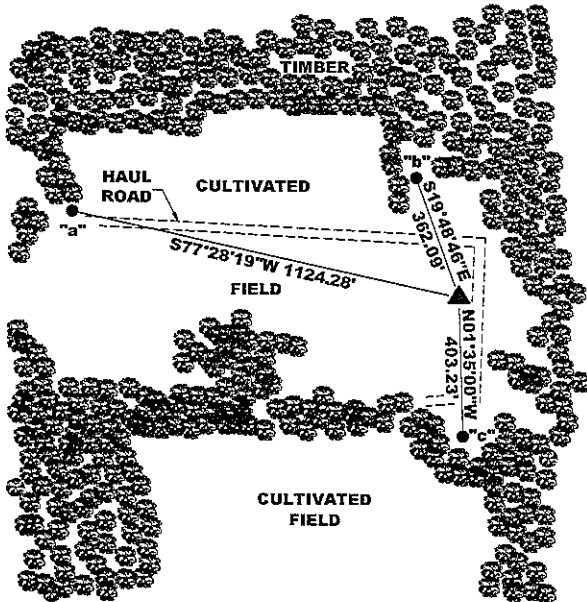
CORNER	SECTION	TOWNSHIP	RANGE
NW	6	T84N	R4W
N 1/4	6	T84N	R4W



NOTE:
 THE STATE PLANE COORDINATE AS INDICATED IS FOR CONVENIENCE ONLY.
 THE TIES AS SHOWN SHOULD BE USED TO REPLACE THE CORNER, IF DESTROYED

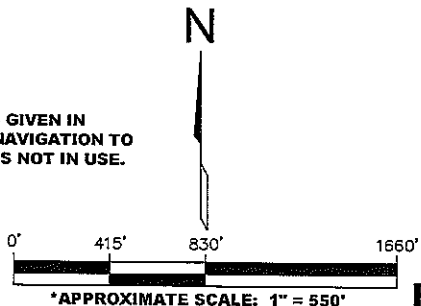
NW CORNER SECTION 6-T84N-R4W
 (SEE NOTE E BELOW RIGHT-HAND CORNER)

N 1/4 CORNER SECTION 6-T84N-R4W
 (SEE NOTE A BELOW RIGHT-HAND CORNER)

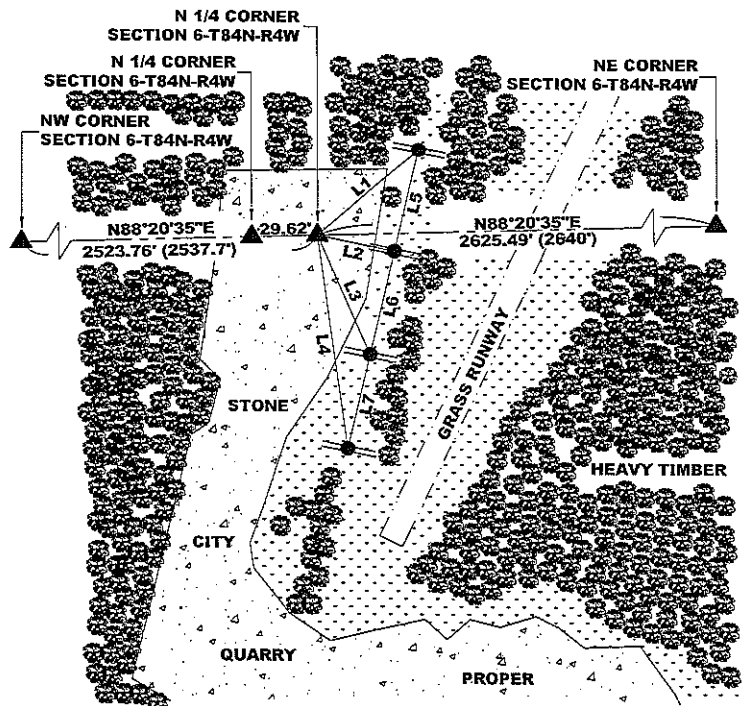


- "a" SET 5/8" REBAR W/ OPC "JONES COUNTY ±17' SOUTH OF YELLOW "SURVEY MARKER" SIGN IN CLUMP OF SOFT MAPLE (*Acer saccharinum*)
- "b" SET 5/8" REBAR W/ OPC "JONES COUNTY ±15' SOUTH OF YELLOW "SURVEY MARKER" SIGN IN WOODEN FENCE POST
- "c" SET 5/8" REBAR W/ OPC "JONES COUNTY ±1.5' NORTH OF YELLOW "SURVEY MARKER" SIGN IN TRIPLE 18" CHOKE CHERRY (*Prunus virginiana*)

* NOTE:
 APPROXIMATE SCALE IS GIVEN IN ORDER TO FACILITATE NAVIGATION TO CORNERS IN CASE GPS IS NOT IN USE.




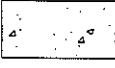
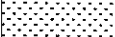


PAGE 2 of 4



- L1 S49°33'54"W 390.03'
- L2 N78°39'25"W 231.59'
- L3 N24°04'00"W 382.03'
- L4 N08°09'40"W 634.29'
- L5 S13°15'00"W 307.21'
- L6 S13°13'32"W 311.53'
- L7 S13°15'30"W 286.68'

LEGEND

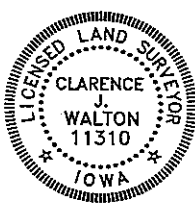
-  SET 5/8" REBAR W/OPC "JONES COUNTY" ± 1' W-LY OF UTILITY POLE. SET YELLOW "SURVEY MARKER" SIGN ON POWER POLE AS WITNESS.
-  OPC ORANGE PLASTIC CAP
-  HARDWOOD TIMBER
-  STONE CITY QUARRY PROPER
-  GRASSED AREA

NW CORNER 6-T84N-R4W PREVIOUSLY RECORDED IN RECORDER'S DOCUMENT No. 1999 3402

MONUMENT DESCRIPTION AND HOW ESTABLISHED NW CORNER SECTION 6-T84N-R4W: FOUND BROKEN HAMMER DRESSED LIMESTONE OBELISK. TOP 2.2 FEET OF OBELISK BROKEN OFF AT GROUND LEVEL AND LAYING AT SOUTH SIDE OF BASE, 2" BELOW SURFACE. SET 5/8" REBAR WITH ORANGE PLASTIC CAP #11310 IN TOP OF OBELISK BASE. REFERENCE TO ORIGIN OF OBELISK IS RECITED IN CORNER TIES FOR THE NE CORNER OF SECTION 1-T84N-R5W IN THE LINN COUNTY, IOWA ENGINEER'S OFFICE. CORNERS OF OBELISK POINT TOWARD CARDINAL DIRECTIONS OF COMPASS. TOP PORTION OF OBELISK WAS PLACED ON TOP OF BASE OF OBELISK TO VERIFY ITS FIT WITH THE BASE. FIT WAS EXACT. PHOTO ON PAGE 4 SHOWS TOP PORTION SITTING IN PLACE ON THE BASE OF THE OBELISK. VIEW IS LOOKING DIRECTLY WEST. LOOSE DIRT IN FOREGROUND IS SPOIL FROM EXCAVATING TOP PORTION OF OBELISK. TOP PORTION WAS PLACED BACK IN HOLE FROM WHICH IT WAS EXCAVATED TO PROTECT IT FROM FARMING ACTIVITIES. AT THE TIME OF SURVEY, THE OBELISK WAS LOCATED ON THE WEST EDGE OF THE NORTH-SOUTH PORTION OF AN UNCULTIVATED HAUL ROAD RUNNING THROUGH FIELD.

N 1/4 CORNER SECTION 6-T84N-R4W: SET 5/8" REBAR WITH ORANGE PLASTIC CAP #11310 AT PROPORTIONATE DISTANCE ON LINE AND BETWEEN THE NW CORNER OF SAID SECTION 6 AND THE NE CORNER OF SAID SECTION 6. SET STEEL FENCE POST WITH YELLOW "SURVEY MARKER" SIGN AS A WITNESS POST.

FIELD BOOK MISC. 2007-2008, PAGES 76 & 78; DATE OF SURVEY: 7/16/09



I hereby certify that this land surveying document and the related survey work was performed by me or under my direct personal supervision and that I am a duly registered Land Surveyor under the laws of the State of Iowa.

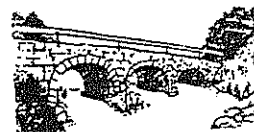
Signed: *Clarence J. Walton* 7/30/09
 Clarence J. Walton, L.S.
 My Registration Renewal Date is December 31, 2009
 Iowa License Number 11310
 Pages or sheets covered by this seal: 2 of 4

- A. THERE IS NO CERTIFICATE FOR THE CORNER ON FILE WITH THE RECORDER OF THE COUNTY IN WHICH THE CORNER IS LOCATED.
- B. THE CORNER MONUMENT HAS BEEN REPLACED OR MODIFIED.
- C. THE SURVEYOR IN RESPONSIBLE CHARGE OF THE LAND SURVEYING ACCEPTS A CORNER POSITION THAT DIFFERS FROM THAT SHOWN IN IN THE PUBLIC RECORDS OF THE COUNTY IN WHICH THE CORNER IS LOCATED.
- D. THE REFERENCE TIES REFERRED TO IN AN EXISTING PUBLIC RECORD NO LONGER EXIST.
- E. ADDED TIES TO FACILITATE LOCATING SECTION CORNER MONUMENT.

CORNERS TO BE INDEXED

CORNER	SECTION	TOWNSHIP	RANGE
NW	6	84N	4W
SW	31	85N	4W
N 1/4	6	84N	4W

JONES COUNTY ENGINEER'S OFFICE



19501 HWY. 64, ANAMOSA, IOWA 52205
 (319) 462-3785

PREPARED BY
 CLARENCE J. WALTON, JONES COUNTY ENGINEER'S OFFICE, 19501 HWY. 64, ANAMOSA, IOWA, 52205 (319) 462-3785

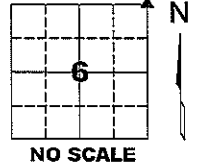
UNITED STATES PUBLIC LAND SURVEY CORNER CERTIFICATE

LAND SURVEY MONUMENTS SITUATED IN SECTION 6, TOWNSHIP 84 NORTH,
 RANGE 4 WEST OF THE 5TH PRINCIPAL MERIDIAN, JONES COUNTY, IOWA.

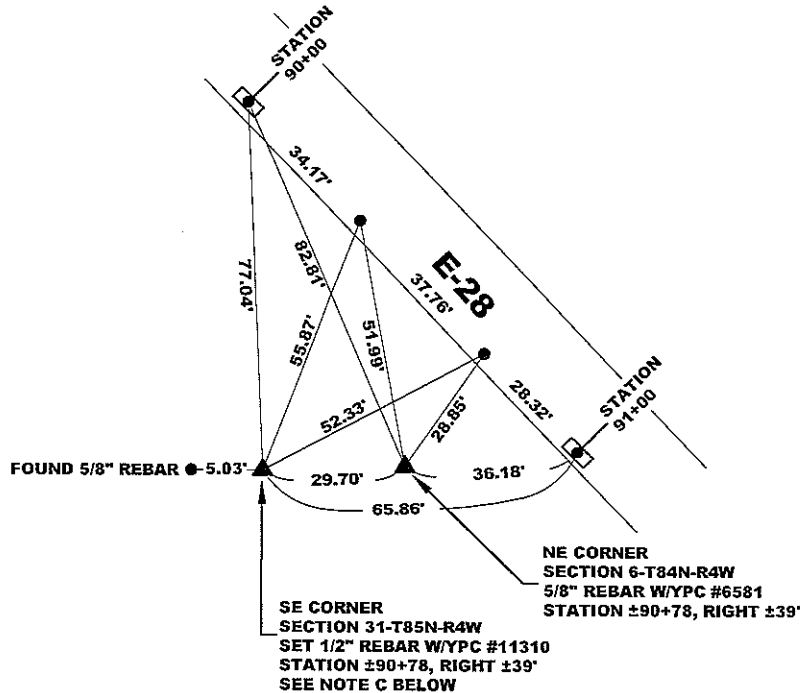
OFFICE FILE NO.

NE CORNER SECTION 6-T84N-R4W
 STATE PLANE COORDINATE
 NAD 83 IOWA NORTH
 N 3514947.29
 E 5505619.22

CORNER SECTION TOWNSHIP RANGE
 NE 6 T84N R4W



NOTE:
 THE STATE PLANE COORDINATE AS INDICATED IS FOR CONVENIENCE ONLY.
 THE TIES AS SHOWN SHOULD BE USED TO REPLACE THE CORNER, IF
 DESTROYED

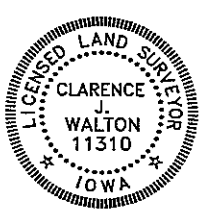


- LEGEND**
- SET MAG NAIL IN CONCRETE PAVEMENT APPROXIMATELY 10" FROM EDGE OF SLAB
 - YPC YELLOW PLASTIC CAP
 - OPC ORANGE PLASTIC CAP

PAGE 3 of 4

NE CORNER SECTION 6-T84N-R4W PREVIOUSLY RECORDED IN RECORDER'S DOCUMENT No. 2005 0238
MONUMENT DESCRIPTION AND HOW ESTABLISHED FOUND 5/8" REBAR WITH YELLOW PLASTIC CAP #6581 ON FORESLOPE OF JONES COUNTY ROAD E-28.

FIELD BOOK MISC. 2007-2008, PAGE 76. DATE OF SURVEY: 7/16/09



I hereby certify that this land surveying document and the related survey work was performed by me or under my direct personal supervision and that I am a duly registered Land Surveyor under the laws of the State of Iowa.
 Signed: *Clarence J. Walton* 7/30/09
 Clarence J. Walton, L.S.
 My Registration Renewal Date is December 31, 2009
 Iowa License Number 11310
 Pages or sheets covered by this seal: 3 of 4

- A. THERE IS NO CERTIFICATE FOR THE CORNER ON FILE WITH THE RECORDER OF THE COUNTY IN WHICH THE CORNER IS LOCATED.
- B. THE CORNER MONUMENT HAS BEEN REPLACED OR MODIFIED.
- C. THE SURVEYOR IN RESPONSIBLE CHARGE OF THE LAND SURVEYING ACCEPTS A CORNER POSITION THAT DIFFERS FROM THAT SHOWN IN THE PUBLIC RECORDS OF THE COUNTY IN WHICH THE CORNER IS LOCATED.
- D. THE REFERENCE TIES REFERRED TO IN AN EXISTING PUBLIC RECORD NO LONGER EXIST.
- E. ADDED TIES TO FACILITATE LOCATING SECTION CORNER MONUMENT.

CORNERS TO BE INDEXED

CORNER	SECTION	TOWNSHIP	RANGE
NE	6	84N	4W
NW	5	85N	4W

JONES COUNTY ENGINEER'S OFFICE



19501 HWY. 64, ANAMOSA, IOWA 52205
 (319) 462-3785

NW CORNER
SECTION 6-T84N-R4W



PREPARED BY
 CLARENCE J. WALTON, JONES COUNTY ENGINEER'S OFFICE, 19501 HWY. 64, ANAMOSA, IOWA, 52205 (319) 462-3785

UNITED STATES PUBLIC LAND SURVEY CORNER CERTIFICATE

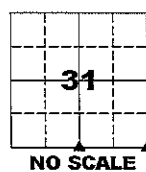
LAND SURVEY MONUMENTS SITUATED IN SECTION 31, TOWNSHIP 85 NORTH,
 RANGE 4 WEST OF THE 5TH PRINCIPAL MERIDIAN, JONES COUNTY, IOWA.

OFFICE FILE NO.

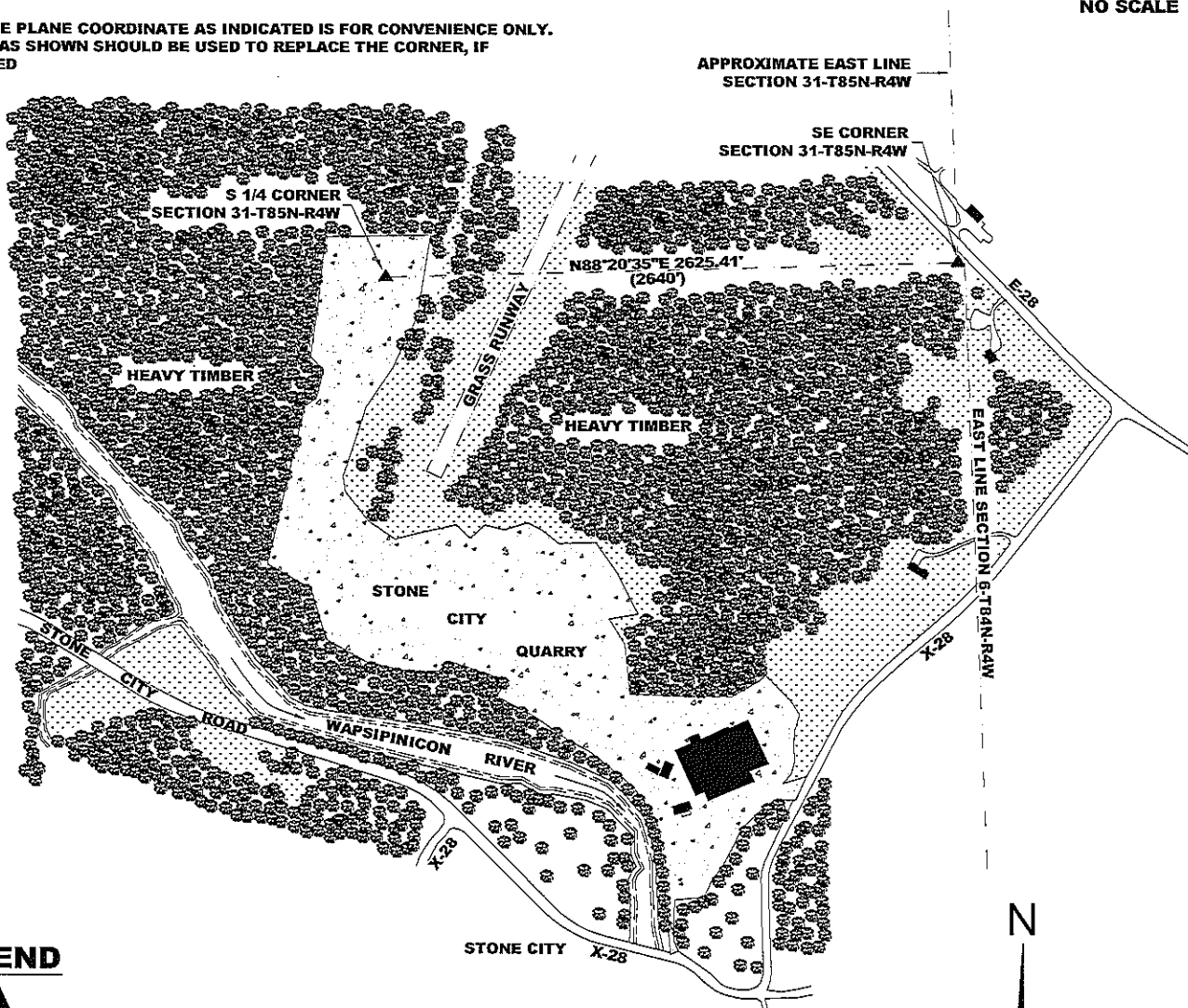
SE CORNER SECTION 31-T85N-R4W
 STATE PLANE COORDINATE
 NAD 83 IOWA NORTH
 N 3514946.43
 E 5505589.53

S 1/4 CORNER SECTION 31-T85N-R4W
 STATE PLANE COORDINATE
 NAD 83 IOWA NORTH
 N 3514870.52
 E 5502965.22



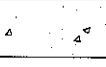

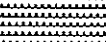
CORNER	SECTION	TOWNSHIP	RANGE
SE	31	T85N	R1W
S 1/4	31	T85N	R1W

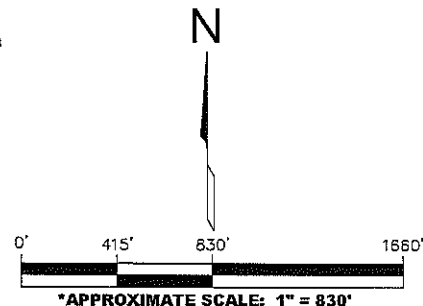


NOTE:
 THE STATE PLANE COORDINATE AS INDICATED IS FOR CONVENIENCE ONLY.
 THE TIES AS SHOWN SHOULD BE USED TO REPLACE THE CORNER, IF
 DESTROYED



LEGEND

-  BUILDING
-  HARDWOOD TIMBER
-  STONE CITY QUARRY PROPER
-  GRASSED AREA
-  CULTIVATED AREA



VICINITY MAP

* NOTE:
 APPROXIMATE SCALE IS GIVEN IN
 ORDER TO FACILITATE NAVIGATION TO
 CORNERS IN CASE GPS IS NOT IN USE.



UNITED STATES PUBLIC LAND SURVEY CORNER CERTIFICATE

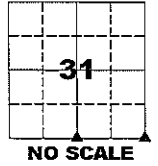
**LAND SURVEY MONUMENTS SITUATED IN SECTION 31, TOWNSHIP 85 NORTH,
 RANGE 4 WEST OF THE 5TH PRINCIPAL MERIDIAN, JONES COUNTY, IOWA.**

OFFICE FILE NO.

SE CORNER SECTION 31-T85N-R4W
 STATE PLANE COORDINATE
 NAD 83 IOWA NORTH
 N 3514947.29
 E 5505619.22

S 1/4 CORNER SECTION 31-T85N-R4W
 STATE PLANE COORDINATE
 NAD 83 IOWA NORTH
 N 3514870.52
 E 5502965.22

CORNER	SECTION	TOWNSHIP	RANGE
SE	31	T85N	R4W
S 1/4	31	T85N	R4W

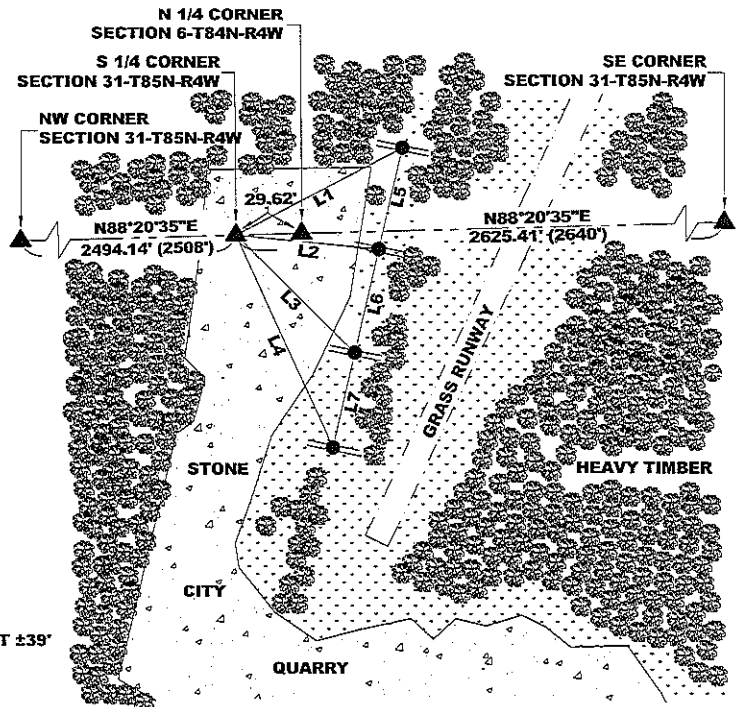
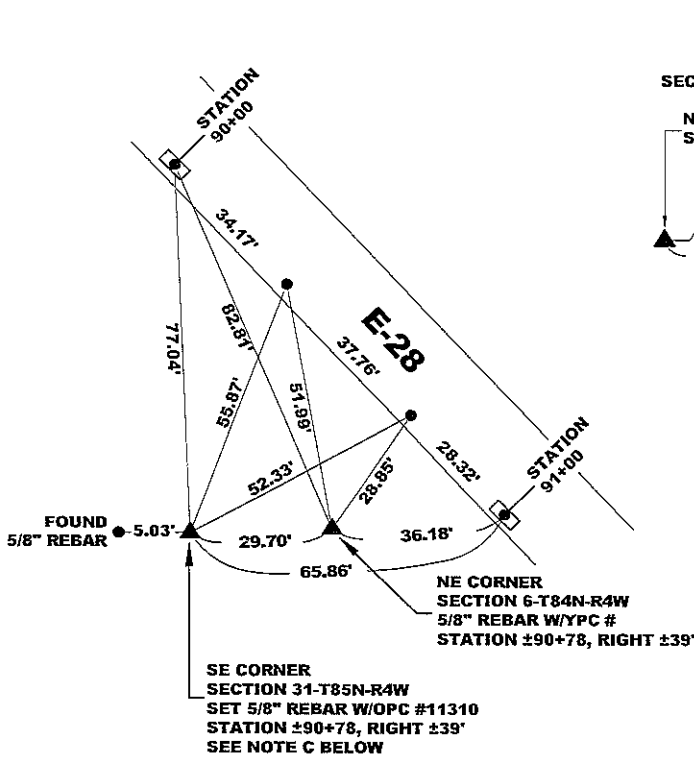


NO SCALE

NOTE:
 THE STATE PLANE COORDINATE AS INDICATED IS FOR CONVENIENCE ONLY.
 THE TIES AS SHOWN SHOULD BE USED TO REPLACE THE CORNER, IF
 DESTROYED

SE CORNER SECTION 31-T85N-R4W
 (SEE NOTE C BELOW RIGHT)

S 1/4 CORNER SECTION 31-T85N-R4W
 (SEE NOTE A BELOW RIGHT)



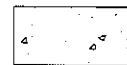
- L1 S52°07'53"W 414.34'
- L2 N80°07'21"W 260.53'
- L3 N28°02'57"W 394.27'
- L4 N10°48'14"W 638.32'
- L5 S13°15'00"W 307.21'
- L6 S13°13'32"W 311.53'
- L7 S13°15'30"W 286.68'

LEGEND

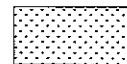
SET 5/8" REBAR W/OPC "JONES COUNTY" ± 1' W-LY OF UTILITY POLE. SET YELLOW "SURVEY MARKER" SIGN ON POWER POLE AS WITNESS.



HARDWOOD TIMBER



STONE CITY QUARRY PROPER



GRASSED AREA

LEGEND

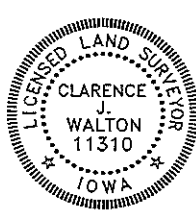
- SET MAG NAIL IN CONCRETE PAVEMENT APPROXIMATELY 8" FROM EDGE OF SLAB
- YPC YELLOW PLASTIC CAP
- OPC ORANGE PLASTIC CAP

PAGE 2 of 2

PREVIOUSLY RECORDED IN RECORDER'S DOCUMENT N/A

MONUMENT DESCRIPTION AND HOW ESTABLISHED SE CORNER SECTION 31-T85N-R4W: FOUND 5/8" REBAR 34.69 FEET WEST OF NE CORNER SECTION 6-T84N-R4W AND 0.68 FEET NORTH OF SOUTH LINE OF TOWNSHIP 85 NORTH. SET 5/8" REBAR WITH ORANGE PLASTIC CAP #11310 AT DISTANCE PER ORIGINAL GOVERNMENT NOTES; BEING 29.70 FEET (45 LINKS). ALSO SET STEEL FENCE POST WITH YELLOW "SURVEY MARKER" SIGN AS A WITNESS POST. S 1/4 CORNER SECTION 31-T85N-R4W: SET 5/8" REBAR WITH ORANGE PLASTIC CAP #11310 AT PROPORTIONATE DISTANCE ON LINE AND BETWEEN THE SW CORNER OF SAID SECTION 31 AND THE SE CORNER OF SAID SECTION 31. ALSO SET STEEL FENCE POST WITH YELLOW "SURVEY MARKER" SIGN AS A WITNESS POST.

FIELD BOOK MISC. 2007-2008, PAGES 76 & 77. DATE OF SURVEY: 7/16/09



I hereby certify that this land surveying document and the related survey work was performed by me or under my direct personal supervision and that I am a duly registered Land Surveyor under the laws of the State of Iowa.

Signed: *Clarence J. Walton* 7/31/09
 Clarence J. Walton, L.S.
 My Registration Renewal Date is December 31, 2009
 Iowa License Number 11310
 Pages or sheets covered by this seal: 1 of 2 and 2 of 2.

- A. THERE IS NO CERTIFICATE FOR THE CORNER ON FILE WITH THE RECORDER OF THE COUNTY IN WHICH THE CORNER IS LOCATED.
- B. THE CORNER MONUMENT HAS BEEN REPLACED OR MODIFIED.
- C. THE SURVEYOR IN RESPONSIBLE CHARGE OF THE LAND SURVEYING ACCEPTS A CORNER POSITION THAT DIFFERS FROM THAT SHOWN IN THE PUBLIC RECORDS OF THE COUNTY IN WHICH THE CORNER IS LOCATED.
- D. THE REFERENCE TIES REFERRED TO IN AN EXISTING PUBLIC RECORD NO LONGER EXIST.
- E. ADDED TIES TO FACILITATE LOCATING SECTION CORNER MONUMENT.

CORNERS TO BE INDEXED

CORNER	SECTION	TOWNSHIP	RANGE
SE	31	85N	4W
SW	32	85N	4W
S 1/4	31	85N	4W

JONES COUNTY ENGINEER'S OFFICE



19501 HWY. 64, ANAMOSA, IOWA 52205
 (319) 462-3785

2005 0238

FILED
RECORDERS OFFICE
JONES COUNTY IOWA

05 JAN 19 PM 1:10

MARIE KRUTZFIELD
RECORDER *No Fee*

J.D. TJEPKES, LS. JONES COUNTY ENGINEER'S OFFICE, 19501 HWY. 64, ANAMOSA, IOWA, 52205 (319)462-3785

UNITED STATES PUBLIC LAND SURVEY CORNER CERTIFICATE

LAND SURVEY MONUMENTS SITUATED IN SECTION ~~8~~⁶ TOWNSHIP 84
NORTH, RANGE 4 WEST OF THE 5TH P.M., JONES COUNTY, IOWA

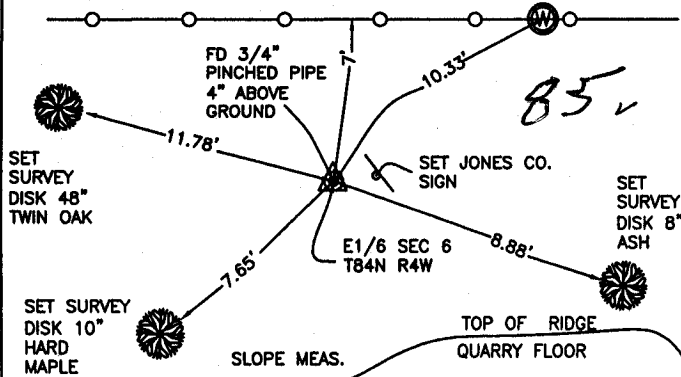
CORNERS TO BE INDEXED

CORNER SECTION TOWNSHIP RANGE
E1/4 6 84N 4W

OFFICE FILE NO.

84406o_111904.tif

FIELD NOTES:
11-17-2004
BK 233
P29



PREVIOUSLY RECORDED IN BOOK NA, PAGE NA
MONUMENT DESCRIPTION AND HOW ESTABLISHED _____
PER TIES ON RECORD AT JONES CO. ENGINEER'S OFFICE,
(MEISNER 1-22-1992), FOUND 3/4" PINCHED PIPE 4" ABOVE
GROUND. SET JONES CO. SIGN AND RETIED AS INDICATED. E1/4
SECTION 6 T84N R4W.

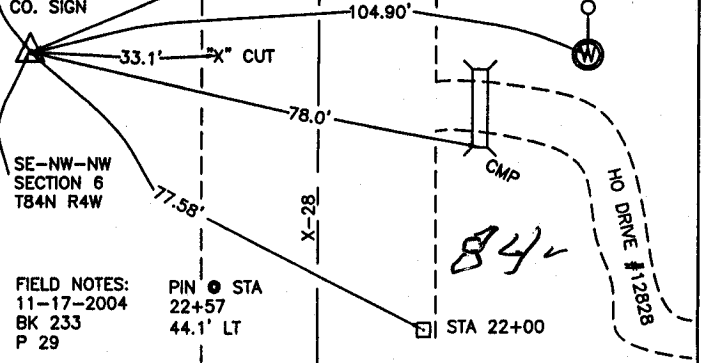
CORNERS TO BE INDEXED

CORNER SECTION TOWNSHIP RANGE
SE-NE-NE 6 84N 4W

OFFICE FILE NO.

84406j_111904.tif

SET 5/8"x24"
REBAR W/CAP
14807 & JONES
CO. SIGN



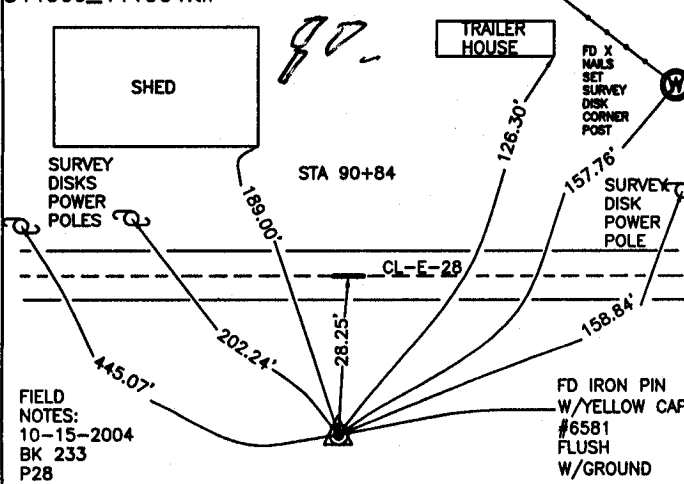
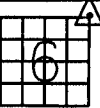
PREVIOUSLY RECORDED IN BOOK NA, PAGE NA
MONUMENT DESCRIPTION AND HOW ESTABLISHED _____
PER TIES ON RECORD AT JONES CO. ENGINEER'S OFFICE,
(DILLON 12-22-1993), RESET 5/8"x24" REBAR W/CAP #14807,
2" ABOVE GROUND. SET JONES CO. SIGN AND RETIED AS
INDICATED. SE-NE-NE SECTION 6 T84N R4W.

CORNERS TO BE INDEXED

CORNER SECTION TOWNSHIP RANGE
NE 6 84N 4W

OFFICE FILE NO.

84406e_111904.tif

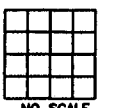


PREVIOUSLY RECORDED IN BOOK NA, PAGE NA
MONUMENT DESCRIPTION AND HOW ESTABLISHED _____
PER FOUND TIES, FOUND IRON PIN W/YELLOW CAP #6581 ON
FORESLOPE OF E-28. RETIED AS INDICATED. NE COR. SEC. 6
T84N R4W.

CORNERS TO BE INDEXED

CORNER SECTION TOWNSHIP RANGE

OFFICE FILE NO.



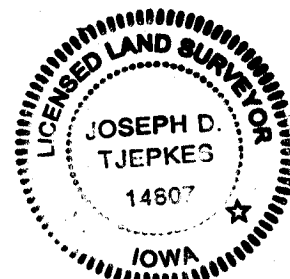
PREVIOUSLY RECORDED IN BOOK _____, PAGE _____
MONUMENT DESCRIPTION AND HOW ESTABLISHED _____

I hereby declare that this plat, survey or report was made by me or under my direct personal supervision and that I am a duly registered Land Surveyor under the laws of the State of Iowa.

Signed: *[Signature]* 1-19-05

Joseph D. Tjepkes L.S. Iowa Reg. No. 14807
My Registration Renewal Date is December 31, 2006

SEAL



J.D. TJEPKES LS 14807
JONES COUNTY
ENGINEER'S OFFICE

19501 HWY. 64,
ANAMOSA, IOWA,
52205 (319)462-3785

E

97 98 2863

FILED
RECORDERS OFFICE
JONES COUNTY IOWA

98 MAR 19 PM 3:02

LINDA J. BENDIXEN
RECORDER

l.j.b.

CLARENCE J. WALTON, LS # 11310, BRAIN ENGINEERING, INC., 503 WEST MAIN STREET, ANAMOSA, IOWA 52205, (319) 462-5782

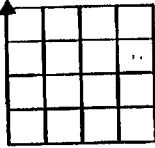
UNITED STATES PUBLIC LAND SURVEY CORNER CERTIFICATE

LAND SURVEY MONUMENTS SITUATED IN SECTION 5, TOWNSHIP 84 NORTH
RANGE 4 WEST OF THE 6TH P.M., JONES COUNTY, IOWA.

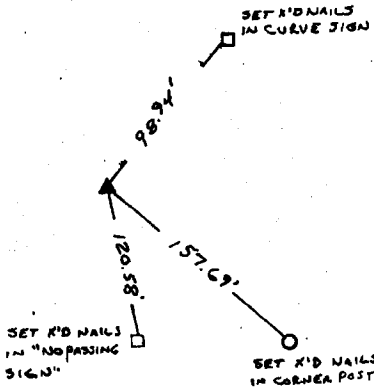
NO SCALE



NW CORNER



NEP

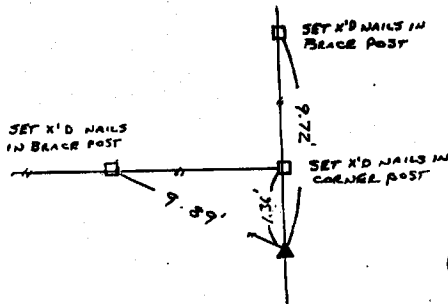
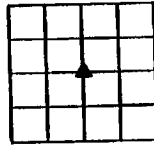


on cond

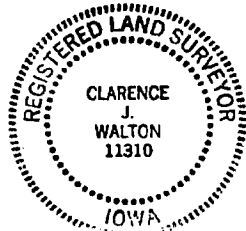
NO SCALE



CENTER



on cond



PREVIOUSLY RECORDED IN BOOK _____ PAGE _____

MONUMENT DESCRIPTION AND HOW ESTABLISHED _____

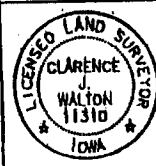
FOUND $\frac{5}{8}$ " REBAR W/CAP #6581 PER PREVIOUS SURVEY

SURVEY

PREVIOUSLY RECORDED IN BOOK _____ PAGE _____

MONUMENT DESCRIPTION AND HOW ESTABLISHED _____

FOUND 1- $\frac{1}{4}$ " PIPE PER PREVIOUS SURVEY



I hereby certify that this land surveying document and the related survey work was performed by me or under my direct personal supervision and that I am a duly licensed Land Surveyor under the laws of the State of Iowa.

Signed *Clarence J. Walton* Date 3/16/98

Clarence J. Walton, L.S.
My License Renewal Date is December 31, 1999
License Number 11310
Pages or sheets covered by this book: 1 of 1

CORNERS TO BE INDEXED

CORNER	SECTION	TOWNSHIP	RANGE
NW	5	84N	4W
CENTER	5	84N	4W

BRAIN ENGINEERING, INC.

503 WEST MAIN STREET
ANAMOSA, IOWA 52205
(319) 462-5782

84406e-031698

84405m-031698

#21317.10