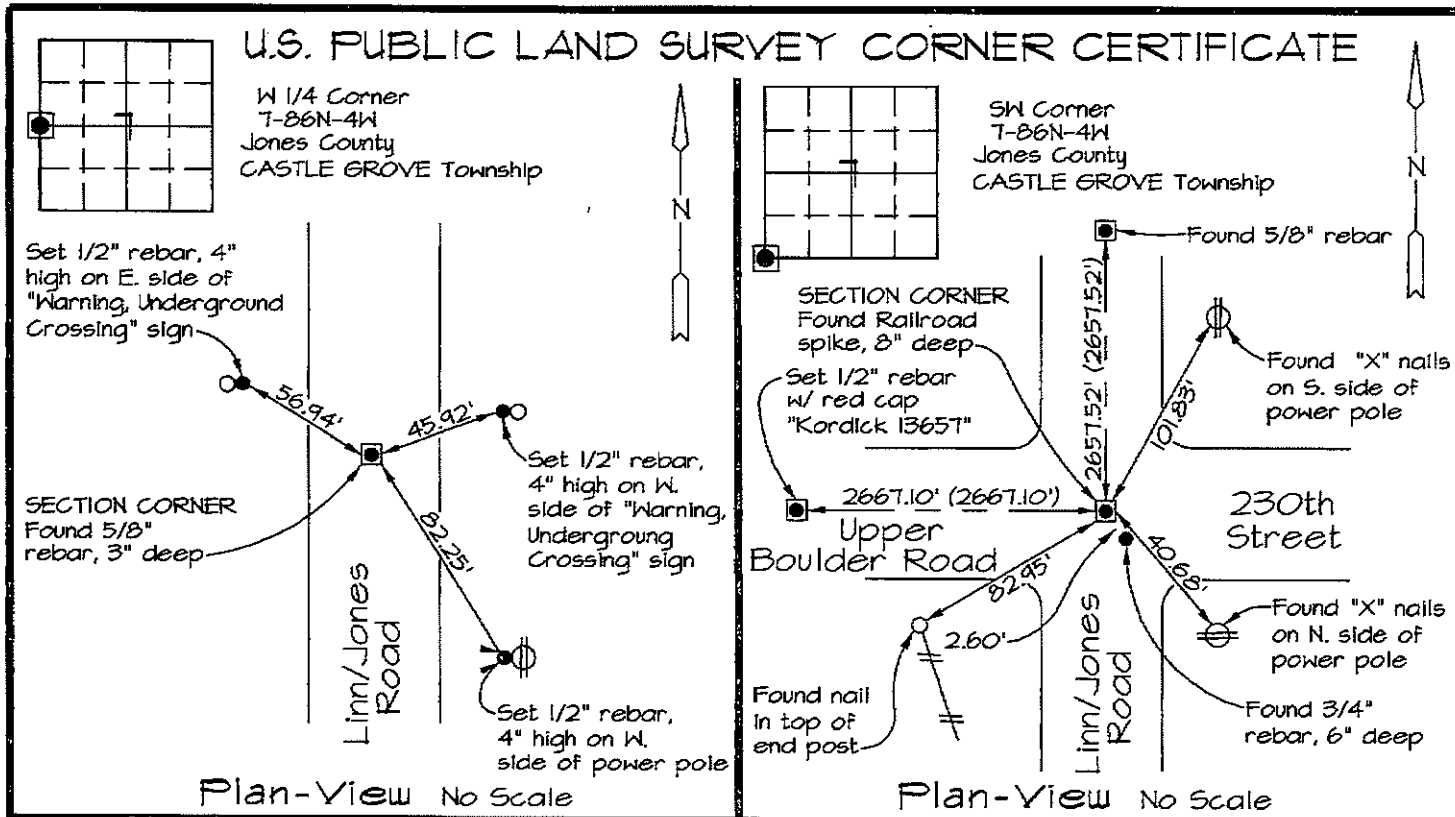


Marie Krutzfield, Recorder  
 Jones County, Iowa

Prepared by: Richard M. Kordick, P.E., L.S., 120 East Main, Suite D, Anamosa, IA 52205 Phone: (319) 462-4498



Reason for corner tie:  
 A) There is no certificate for the corner on file with the recorder.  
 B) Corner position differs from previously recorded certificate recorded in book , page  
 C) Corner monument was replaced or modified.  
 D) Reference ties in previously recorded certificate recorded in book , page are incorrect or missing.

Research at the recorder's office, auditor's office, and engineer's office revealed the following:  
 An Easement Exhibit recorded in Linn County Recorder's Office Bk. 3182-481, Bk. 3204-175, and Bk. 3182-485 called for a "Found Iron Pin, Sta. 31+43.72, CL 0.0'" at this corner. A Jones County Engineer's Office corner tie called for a "5/8"x24" rebar" at this corner.

An Easement Exhibit recorded in Linn County Recorder's Office Bk. 3182-482 and Bk. 3234-404 and 405 called for a "Found Iron Pin, Sta. 4+86.21, CL 0.0'" at this corner.

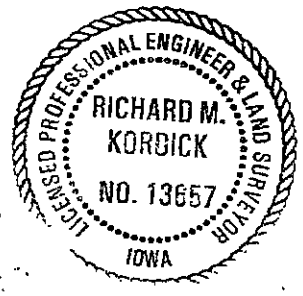
Field search performed was as follows:  
 Field search was performed with a metal detector and excavation.

Field search performed was as follows:  
 Field search was performed with a metal detector and excavation.

Monument found or set:  
 A 5/8" rebar was found and used as the corner.

Monument found or set:  
 A railroad spike was found and used as the corner.

I hereby certify that this land surveying document was prepared and the related survey work was performed by me or under my direct personal supervision and that I am a duly licensed Land Surveyor under the laws of the State of Iowa.  
*Richard M. Kordick* 2/8/2008  
 Richard M. Kordick date  
 License number 13657  
 My license renewal date is December 31, 2009.  
 Pages or sheets covered by this seal: 1 of 1



**LEGEND:**

- Section Corner as noted
- Power Pole
- Section line
- - - Centerline
- /// Existing Fence
- ( ) Recorded Dist.

**Kordick Surveying & Engineering**  
 120 East Main, Suite D  
 Anamosa, Iowa 52205  
 (319) 462-4498

U.S. Public Land  
 Survey Corner Certificate  
 Project:  
 Section T-T. 86 N.-R. 4 W.

Field BK	07103B
Date	2-8-08
Job No.	07103B
Sheet	1 of 1

Foil

PREPARED BY HALL & HALL ENGINEERS, INC. 209 29TH STREET N.E. CEDAR RAPIDS, IOWA 52402 (319) 362-9548  
SECTION CORNER CERTIFICATE

OF  
LAND SURVEY MONUMENTS SITUATED IN SECTION 7, TOWNSHIP 84 NORTH,  
RANGE 4 WEST, OF THE FIFTH PRINCIPAL MERIDIAN, JONES COUNTY, IOWA.

PREVIOUSLY RECORDED IN BOOK        AT PAGE       

REASON FOR PREPARING CERTIFICATE:

- A) THERE IS NO CERTIFICATE FOR THE CORNER ON FILE WITH THE RECORDER OF THE COUNTY IN WHICH THE CORNER IS LOCATED.
- B) CORNER POSITION DIFFERS FROM THAT SHOWN IN THE PUBLIC RECORDS OF THE COUNTY IN WHICH THE CORNER IS LOCATED.
- C) THE CORNER MONUMENT HAS BEEN REPLACED OR MODIFIED
- D) THE REFERENCE TIES REFERRED TO IN AN EXISTING PUBLIC RECORD ARE INCORRECT

MONUMENT DESCRIPTION AND REMARKS:

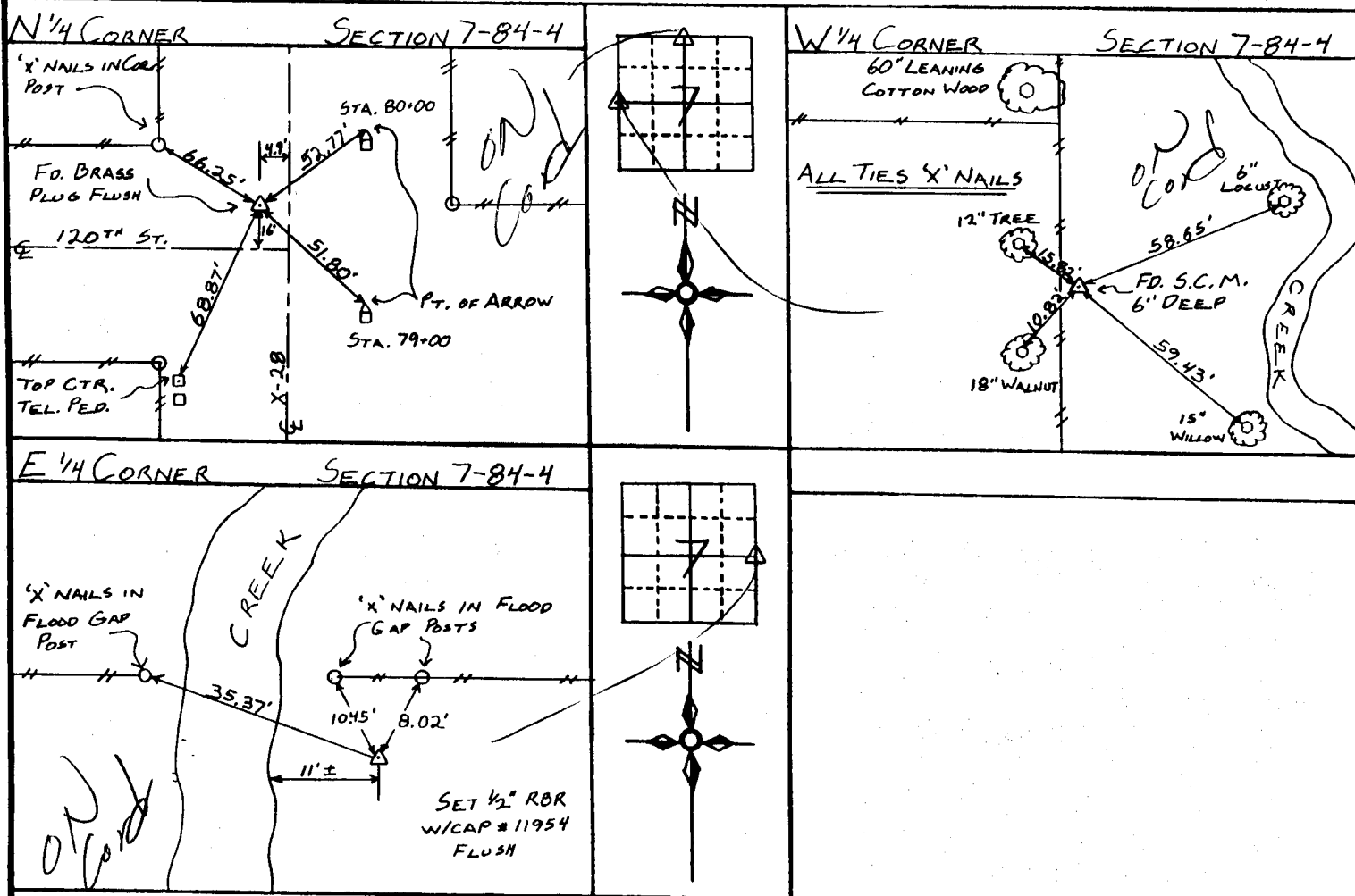
N<sup>1</sup>/<sub>4</sub> COR. SECTION 7-84-4: FOUND BRASS PLUG FLUSH W/PAVEMENT, 4.90' W. OF E. CO. X-28

W<sup>1</sup>/<sub>4</sub> COR. SECTION 7-84-4: FOUND S.C.M. 6" BELOW SURFACE, 2.5' E. OF N-S FENCE LINE, SET 1/2"

REBAR AT WEST FACE

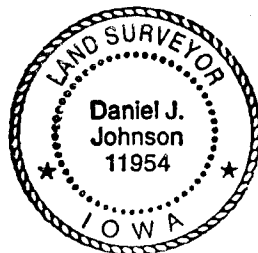
E<sup>1</sup>/<sub>4</sub> COR. SECTION 7-84-4: SET 1/2" REBAR W/CAP #11954, FLUSH W/GROUND

RECOVERY TIE DRAWING



I, DANIEL J. JOHNSON, - CERTIFY THAT THE CORNER LOCATION(S) SHOWN ON THIS RECORD WERE DETERMINED BY ME OR UNDER MY DIRECTION AND CONTROL AND THAT THIS U.S. PUBLIC LAND SURVEY MONUMENT RECORD IS CORRECT AND COMPLETE TO THE BEST OF MY KNOWLEDGE AND BELIEF.

Daniel J. Johnson 12-19-96  
DANIEL J. JOHNSON L.S. NO. 11954 DATE



MY LICENSE RENEWAL DATE IS DECEMBER 31, 1998

LEGEND ▲ GOVERNMENT CORNER ● PROPERTY CORNER FOUND ○ 1/2" X 30" W/ L.S. CAP SET --- EXISTING FENCE LINE --- PROPERTY LINE	SHEET TITLE: U.S. PUBLIC LAND SURVEY RECORD	HALL AND HALL ENGINEERS, INC. 209 29TH STREET N.E. CEDAR RAPIDS, IOWA 52402 (319) 362-9548
	PROJECT TITLE: DAN WAID PLAT OF SURVEY	
DATE: 1/24/96	SCALE: NONE	FILE NO: 5244