

NOT A CERTIFICATE

J.D. TJEPKES, LS. JONES COUNTY ENGINEER'S OFFICE, 19501 HWY. 64, ANAMOSA, IOWA, 52205 (319)462-3785

# UNITED STATES PUBLIC LAND SURVEY CORNER CERTIFICATE

LAND SURVEY MONUMENTS SITUATED IN SECTION 10, TOWNSHIP 83  
NORTH, RANGE 4 WEST OF THE 5TH P.M., JONES COUNTY, IOWA

**CORNERS TO BE INDEXED**

CORNER	SECTION	TOWNSHIP	RANGE
CENTER	10	83N	4W

OFFICE FILE NO. 83410m\_111605.tif

FIELD NOTES:  
10-12-2005  
BK 367  
P 79

PREVIOUSLY RECORDED IN BOOK NA, PAGE NA  
MONUMENT DESCRIPTION AND HOW ESTABLISHED  
PER BREAKDOWN OF SECTION 10 T83N R4W, SET 5/8"X24" REBAR W/ORANGE CAP #14807 & JONES COUNTY SIGN ON POST, TOP OF NORTH BACKSLOPE OLD RAIL ROAD CUT. TIES AS INDICATED FOR CENTER SECTION 10 T83N R4W.

**CORNERS TO BE INDEXED**

CORNER	SECTION	TOWNSHIP	RANGE
E1/4	10	83N	4W

OFFICE FILE NO. 83410o\_111605.tif

FIELD NOTES:  
9-28-2005  
BK #367  
P 79

PREVIOUSLY RECORDED IN BOOK NA, PAGE NA  
MONUMENT DESCRIPTION AND HOW ESTABLISHED  
PER PROPORTIONATE DISTANCE AND ON LINE BETWEEN FD S.C.M, PER RECORD TIES, @ SE CORNER SEC 10 AND FD BRASS PLUG, PER RECORD TIES, @ NE CORNER SEC 10, SET 5/8"X24" REBAR W/ORANGE CAP #14807, FLUSH W/GROUND. TIES AS INDICATED FOR E1/4 COR. SECTION 10 T83N R4W.

**CORNERS TO BE INDEXED**

CORNER	SECTION	TOWNSHIP	RANGE
SE COR	10	83N	4W

OFFICE FILE NO. 83415e\_111605.tif

PREVIOUSLY RECORDED IN BOOK NA, PAGE NA  
MONUMENT DESCRIPTION AND HOW ESTABLISHED  
PER OLD TIES ON RECORD AT ENGINEER'S OFFICE DATED 1936, DUG AND FOUND CONCRETE MONUMENT BURIED 27" ON WEST SHOULDER LINE. SET 5/8"X20" REBAR W/ORANGE CAP #14807 ON TOP OF MONUMENT. TOP OF REBAR BURIED 4". TIES AS INDICATED FOR SE CORNER SECTION 10 T83N R4W.

**CORNERS TO BE INDEXED**

CORNER	SECTION	TOWNSHIP	RANGE

OFFICE FILE NO.

PREVIOUSLY RECORDED IN BOOK \_\_\_\_\_, PAGE \_\_\_\_\_  
MONUMENT DESCRIPTION AND HOW ESTABLISHED \_\_\_\_\_

I hereby declare that this plat, survey or report was made by me or under my direct personal supervision and that I am a duly registered Land Surveyor under the laws of the State of Iowa.

Signed: \_\_\_\_\_

Joseph D. Tjepkes L.S. Iowa Reg. No. 14807  
My Registration Renewal Date is December 31, 2006

SEAL

J.D. TJEPKES LS 14807  
JONES COUNTY  
ENGINEER'S OFFICE

19501 HWY. 64,  
ANAMOSA, IOWA,  
52205 (319)462-3785

2005 4155

FILED  
RECORDERS OFFICE  
JONES COUNTY IOWA

05 NOV 17 AM 9:03

MARIE KRUTZFIELD  
RECORDER No Fee

GREENFIELD

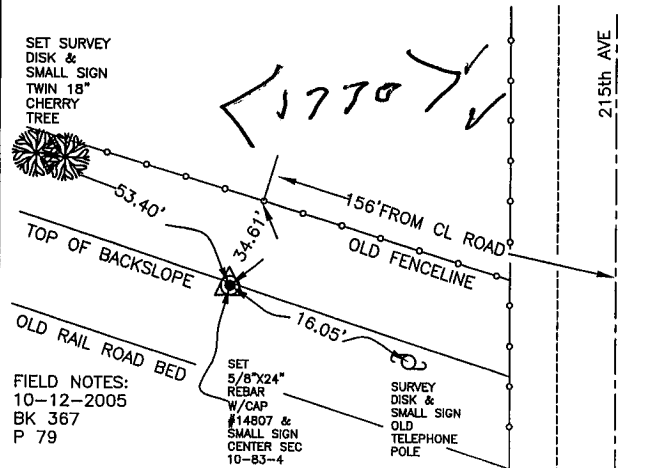
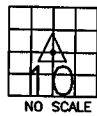
J.D. TJEPKES, LS. JONES COUNTY ENGINEER'S OFFICE, 19501 HWY. 64, ANAMOSA, IOWA, 52205 (319)462-3785

# UNITED STATES PUBLIC LAND SURVEY CORNER CERTIFICATE

LAND SURVEY MONUMENTS SITUATED IN SECTION 10, TOWNSHIP 83  
NORTH, RANGE 4 WEST OF THE 5TH P.M., JONES COUNTY, IOWA

### CORNERS TO BE INDEXED

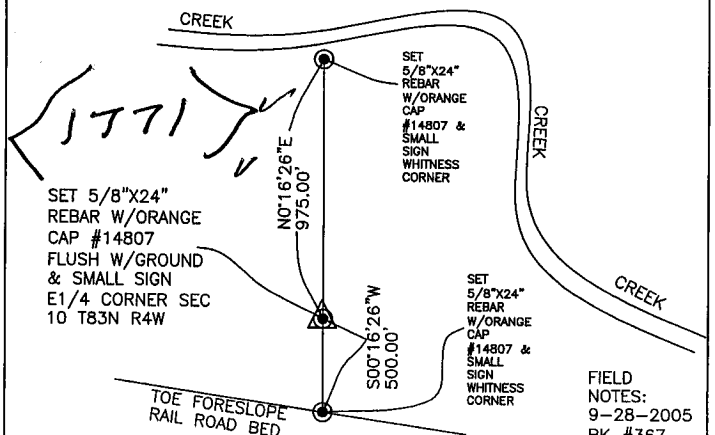
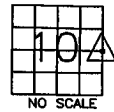
CORNER SECTION TOWNSHIP RANGE  
CENTER 10 83N 4W  
OFFICE FILE NO.  
83410m\_111605.tif



PREVIOUSLY RECORDED IN BOOK NA, PAGE NA  
MONUMENT DESCRIPTION AND HOW ESTABLISHED  
PER BREAKDOWN OF SECTION 10 T83N R4W, SET 5/8\"/>

### CORNERS TO BE INDEXED

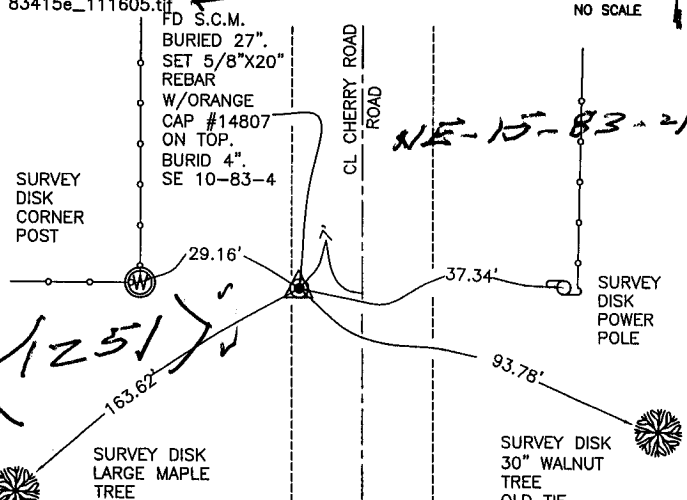
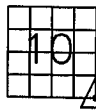
CORNER SECTION TOWNSHIP RANGE  
E1/4 10 83N 4W  
OFFICE FILE NO.  
83410o\_111605.tif



PREVIOUSLY RECORDED IN BOOK NA, PAGE NA  
MONUMENT DESCRIPTION AND HOW ESTABLISHED  
PER PROPORTIONATE DISTANCE AND ON LINE BETWEEN FD S.C.M, PER RECORD TIES, SE CORNER SEC 10 AND FD BRASS PLUG, PER RECORD TIES, NE CORNER SEC 10, SET 5/8\"/>

### CORNERS TO BE INDEXED

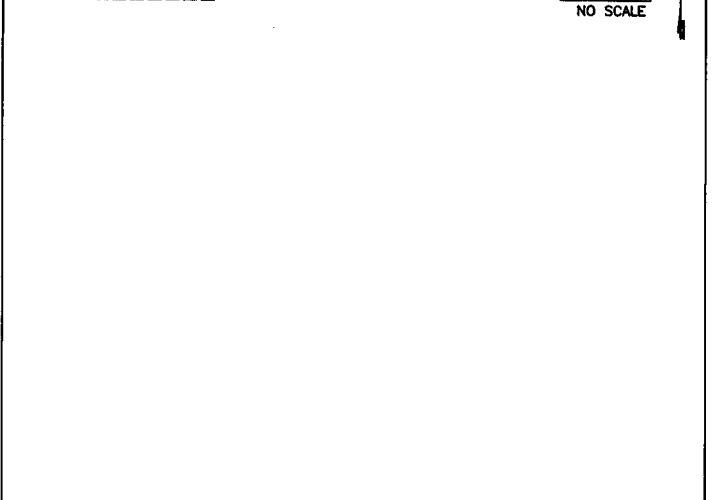
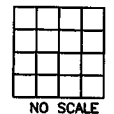
CORNER SECTION TOWNSHIP RANGE  
SE COR 10 83N 4W  
OFFICE FILE NO.  
83415e\_111605.tif



PREVIOUSLY RECORDED IN BOOK NA, PAGE NA  
MONUMENT DESCRIPTION AND HOW ESTABLISHED

### CORNERS TO BE INDEXED

CORNER SECTION TOWNSHIP RANGE  
OFFICE FILE NO.



PREVIOUSLY RECORDED IN BOOK NA, PAGE NA  
MONUMENT DESCRIPTION AND HOW ESTABLISHED