

Instrument #: 2016-3611  
 12/20/2016 02:40:15 PM Total Pages: 1  
 ZSC SECTION CORNER CERTIFICATE  
 Recording Fee: \$7.00 Transfer Tax: \$0  
 Sheri L. Jones, Recorder, Jones County Iowa



PREPARED BY & RETURN TO: BRADLEY R. GEATER, PLS / MCCLURE ENGINEERING COMPANY / 1740 LININGER LANE, NORTH LIBERTY, IA 52317 / 319-626-9090

## U.S. PUBLIC LAND SURVEY CORNER CERTIFICATE

OF LAND SURVEY MONUMENT SITUATED IN SECTION 11, TOWNSHIP 83, RANGE 4 WEST OF THE FIFTH PRINCIPAL MERIDIAN,  
 JONES COUNTY, IOWA. PREVIOUSLY RECORDED IN JONES COUNTY RECORDER'S OFFICE IN BOOK 2008, PAGE 320.

**REASON FOR PREPARING THIS CERTIFICATE:**

- CORNER RESTORATION (Accepted or perpetuated corner)
- CORNER ESTABLISHMENT (Any PLSS corner created, but not monumented in the original survey; Center 1/4, 1/16 Corner, etc.)
- CORNER REESTABLISHMENT (Lost corner)

**DESCRIPTION OF ORIGINAL AND SUBSEQUENT SURVEYS REFERENCING THIS CORNER LOCATION:**

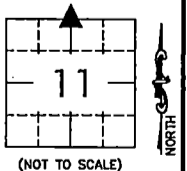
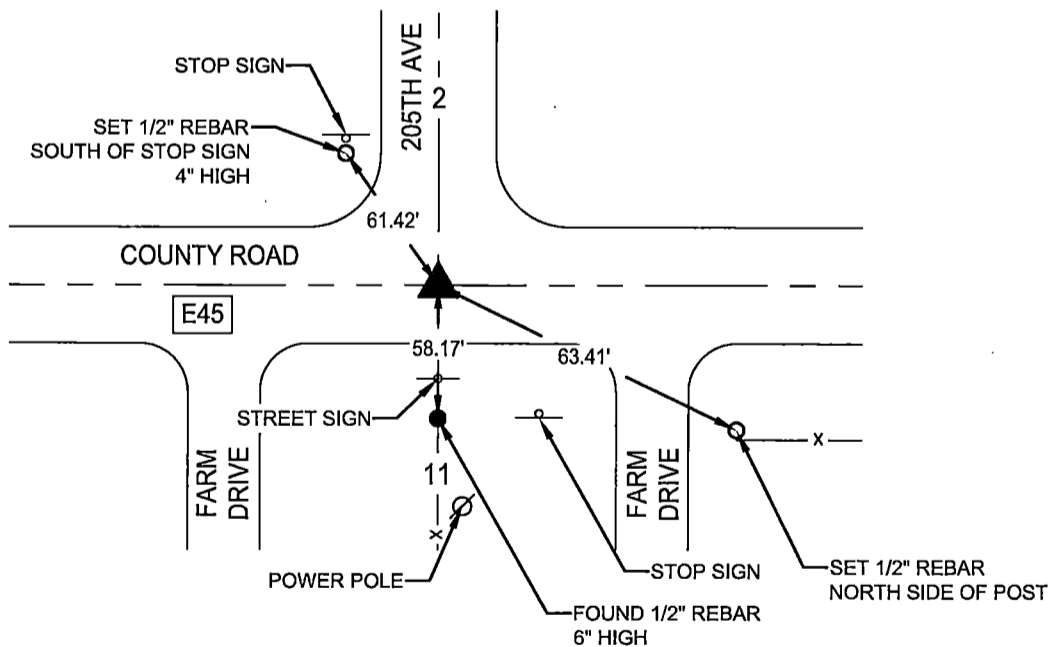
- PREVIOUSLY RECORDED IN JONES COUNTY RECORDERS OFFICE IN BOOK 2008, PAGE 320.
- SECTION CORNER PRESERVATION DURING ROAD OVERLAY PROJECT NUMBER STP-S-C053(81)--5E-53

**DESCRIPTION OF CORNER EVIDENCE FOUND OR A DETAILED STATEMENT OF THE METHOD USED TO ESTABLISH / REESTABLISH THIS CORNER:**

- NORTH QUARTER CORNER SECTION 11-83-4 - FOUND 2" BRASS PLUG IN CONCRETE USING PREVIOUS CERTIFICATE.

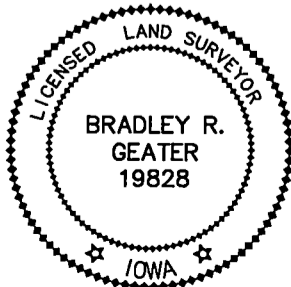
**DESCRIPTION AND SKETCH OF THE MONUMENT AND ITS ACCESSORIES ESTABLISHED TO PERPETUATE THE LOCATION OF THIS CORNER:**

- NORTH QUARTER CORNER SECTION 11-83-4 SET SURVEY BRASS MONUMENT AT 2" BRASS PLUG LOCATION AFTER COMPLETION OF OVERLAY.



**McCLURE**  
 ENGINEERING CO.  
 building strong communities.

1740 Lininger Lane  
 North Liberty, IA 52317  
 319-626-9090  
 fax 319-626-9095



I HEREBY CERTIFY THAT THIS LAND SURVEYING DOCUMENT WAS PREPARED AND THE RELATED WORK WAS PERFORMED BY ME OR UNDER MY DIRECT PERSONAL SUPERVISION AND THAT I AM A DULY LICENSED LAND SURVEYOR UNDER THE LAWS OF THE STATE OF IOWA.

SIGNATURE: *Bradley R. Geater* DATE: 12-20-2016  
 BRADLEY R. GEATER

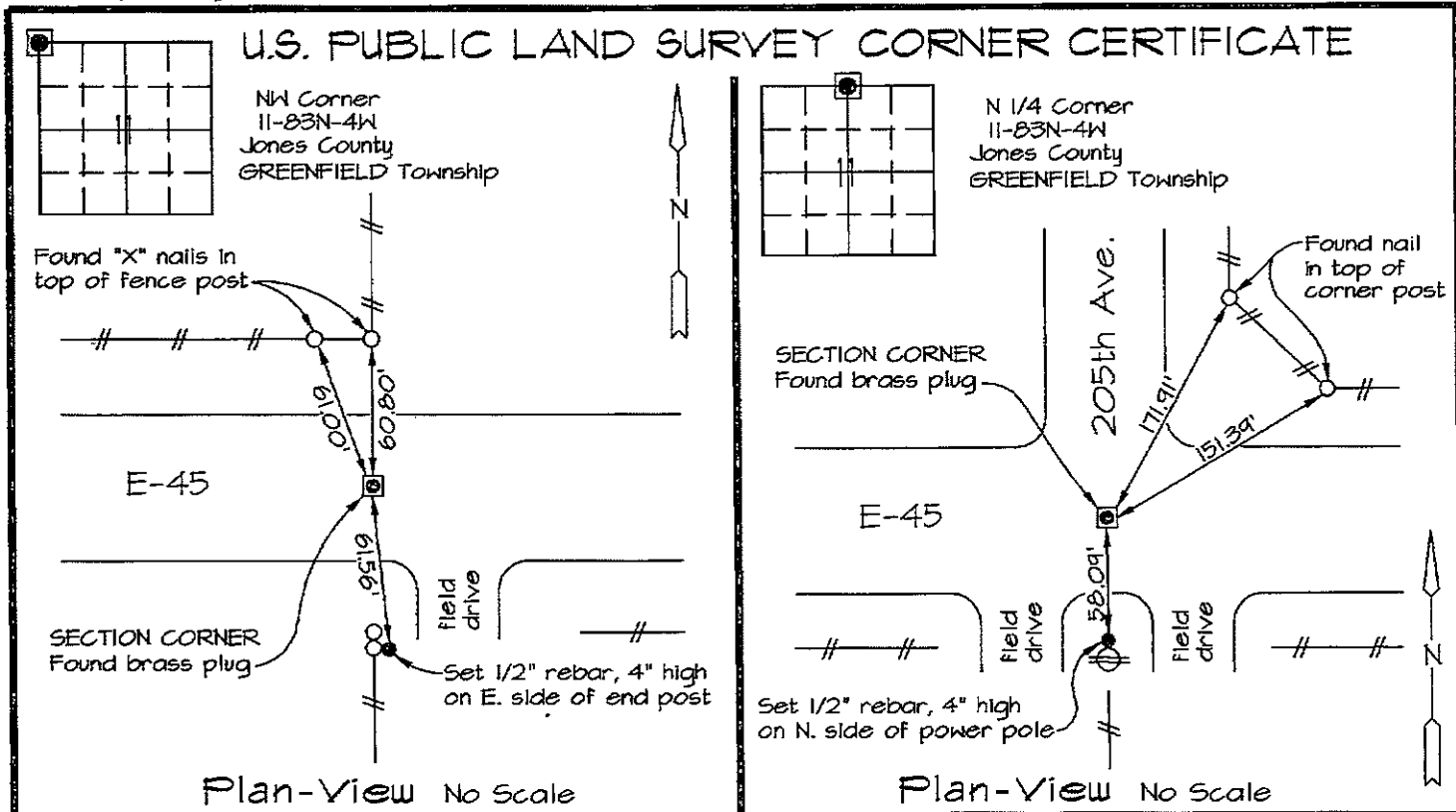
MY LICENSE RENEWAL DATE IS DECEMBER 31, 2017  
 PAGES OR SHEETS COVERED BY THIS SEAL: THIS SHEET  
 DATE SURVEYED: 09-08-2016  
 DRAWING PATH: Projects\JNC 20716057\Dwgs\Corners\  
 CC07 N QUARTER 11-83-4.dwg

**CORNERS TO BE INDEXED**

CORNER	SEC.	TWP.	RGE.
N 1/4	11	83	4
S 1/4	2	83	4

Marie Krutzfield, Recorder  
Jones County, Iowa

Prepared by: Richard M. Kordick, P.E., L.S., 120 East Main, Suite D, Anamosa, IA 52205 Phone: (319) 462-4498



Reason for corner tie:

- A) There is no certificate for the corner on file with the recorder.
- B) Corner position differs from previously recorded certificate recorded in book , page
- C) Corner monument was replaced or modified.
- D) Reference ties in previously recorded certificate recorded in book , page are incorrect or missing.

Research at the recorder's office, auditor's office, and engineer's office revealed the following:  
County Engineer's Office corner ties stated "(1968) county survey crew found standard concrete monument prior to road paving. After paving was done in 1972, survey crew set brass plug in concrete directly above scm location."

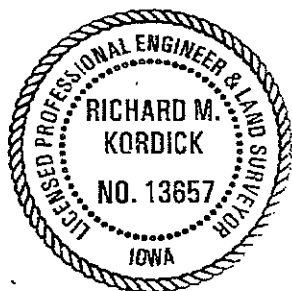
County Engineer's Office corner ties stated "In 1968 county survey crew found standard concrete monument 2' below surface prior to paving. In 1972 county survey crew set brass plug in concrete after paving. County Engineer's Office road plans stated Ref. P.I. and N 1/4 Cor. Sec. 11 Sta. 202+37.4". A Plat of Survey in Recorder's Doc. #2006-3824 stated "South 1/4 Cor., Sec. 2, T83N, R4W, 5th P.M., F.D. Brass Plug in pavement per Record Ties" for this corner.

Field search performed was as follows:  
Field search was performed with a metal detector.

Field search performed was as follows:  
Field search was performed with a metal detector.

Monument found or set:  
A brass plug was found and used as the corner.

Monument found or set:  
A brass plug was found and used as the corner.



I hereby certify that this land surveying document was prepared and the related survey work was performed by me or under my direct personal supervision and that I am a duly licensed Land Surveyor under the laws of the State of Iowa.

*Richard M. Kordick* 1/30/2008  
Richard M. Kordick date  
License number 13657  
My license renewal date is December 31, 2009.  
Pages or sheets covered by this seal: 1 of 1

LEGEND:

- Section Corner as noted
- Power Pole
- Section line
- Centerline
- Existing Fence
- Recorded Dist.

**Kordick Surveying & Engineering**  
120 East Main, Suite D  
Anamosa, Iowa 52205  
(319) 462-4498

U.S. Public Land  
Survey Corner Certificate  
Project: Plat of Survey  
Parcel No. 2008-40

Field BK  
08014  
Date  
1-30-08  
Job No.  
08014  
Sheet  
1 of 1

# THIS IS NOT A CERTIFICATION

JONES COUNTY ENGINEER'S OFFICE, 19501 HWY. 64, ANAMOSA, IOWA, 52205 (319)462-3785

## UNITED STATES PUBLIC LAND SURVEY CORNER CERTIFICATE

LAND SURVEY MONUMENTS SITUATED IN SECTION 11, TOWNSHIP 83  
NORTH, RANGE 4 WEST OF THE 5TH P.M., JONES COUNTY, IOWA

CORNERS TO BE INDEXED

CORNER NORTHEAST	SECTION 11	TOWNSHIP 83N	RANGE 4W
---------------------	---------------	-----------------	-------------

OFFICE FILE NO. \_\_\_\_\_  
83411e\_080803.jpg

1972 INFORMATION  
COUNTY SURVEY CREW  
POSTEL-LYON

1244

PREVIOUSLY RECORDED IN BOOK #129, PAGE \_\_\_\_\_  
MONUMENT DESCRIPTION AND HOW ESTABLISHED IN 1967 COUNTY SURVEY CREW FOUND STANDARD CONCRETE MONUMENT 3.5' BELOW SURFACE OF ROADWAY, SET IRON PIN DIRECTLY ABOVE SCM. IN 1972 COUNTY SURVEY CREW DUG DOWN 8" AND FOUND IRON PIN, SET REFERENCE POINTS AND TIED OUT AS INDICATED. NORTHEAST CORNER SECTION 11, TOWNSHIP 83 NORTH, RANGE 4 WEST OF 5TH PM, JONES COUNTY, IOWA.

CORNERS TO BE INDEXED

CORNER NORTH-1/4	SECTION 11	TOWNSHIP 83N	RANGE 4W
---------------------	---------------	-----------------	-------------

OFFICE FILE NO. \_\_\_\_\_  
83411c\_080803.jpg

1972 INFORMATION  
COUNTY SURVEY CREW  
POSTEL-LYON

1245

PREVIOUSLY RECORDED IN BOOK #129, PAGE \_\_\_\_\_  
MONUMENT DESCRIPTION AND HOW ESTABLISHED IN 1968 COUNTY SURVEY CREW FOUND STANDARD CONCRETE MONUMENT 2' BELOW SURFACE PRIOR TO PAVING. IN 1972 COUNTY SURVEY CREW SET BRASS PLUG IN CONCRETE AFTER PAVING. NORTH QUARTER CORNER SECTION 11, TOWNSHIP 83 NORTH, RANGE 4 WEST OF THE 5TH PRINCIPAL, JONES COUNTY, IOWA. SET REFERENCE POINTS AND TIED OUT AS INDICATED.

CORNERS TO BE INDEXED

CORNER	SECTION	TOWNSHIP	RANGE
--------	---------	----------	-------

OFFICE FILE NO. \_\_\_\_\_

1936 INFORMATION  
COUNTY SURVEY CREW  
KIRCHOFF

1246

PREVIOUSLY RECORDED IN BOOK #6, PAGE 39  
MONUMENT DESCRIPTION AND HOW ESTABLISHED IN 1936, COUNTY SURVEY CREW FOUND 4"x10"x16" LIMESTONE AT ROAD INTERSECTION. LOWERED STONE TO DEPTH OF 5' AND SET STANDARD CONCRETE MONUMENT DIRECTLY ABOVE WITH TOP OF MONUMENT 16" BELOW PRESENT ROAD SURFACE. SET REFERENCE POINTS AND TIED OUT AS INDICATED. EAST QUARTER CORNER SECTION 11, TOWNSHIP 83 NORTH, RANGE 4 WEST OF 5TH PM, JONES COUNTY, IOWA.

CORNERS TO BE INDEXED

CORNER EAST QUARTER	SECTION 11	TOWNSHIP 83N	RANGE 4W
------------------------	---------------	-----------------	-------------

OFFICE FILE NO. \_\_\_\_\_  
83411o\_080803.jpg

1936 INFORMATION  
COUNTY SURVEY CREW  
KIRCHOFF

1246

PREVIOUSLY RECORDED IN BOOK #6, PAGE 39  
MONUMENT DESCRIPTION AND HOW ESTABLISHED IN 1936, COUNTY SURVEY CREW FOUND 4"x10"x16" LIMESTONE AT ROAD INTERSECTION. LOWERED STONE TO DEPTH OF 5' AND SET STANDARD CONCRETE MONUMENT DIRECTLY ABOVE WITH TOP OF MONUMENT 16" BELOW PRESENT ROAD SURFACE. SET REFERENCE POINTS AND TIED OUT AS INDICATED. EAST QUARTER CORNER SECTION 11, TOWNSHIP 83 NORTH, RANGE 4 WEST OF 5TH PM, JONES COUNTY, IOWA.

~~I hereby declare that this plat, survey or report was made by me or under my direct personal supervision and that I am a duly registered Land Surveyor under the laws of the State of Iowa.~~

Signed: \_\_\_\_\_

SEAL

JONES COUNTY  
ENGINEER'S OFFICE

19501 HWY. 64,  
ANAMOSA, IOWA,  
52205 (319)462-3785