

Jones County  
 Marie Krutzfield, Recorder  
**Fee Book 2010 1335**

05/24/2010 @0158PM  
 ZSC SEC COR CERT  
 Book: Page: # Pages: 1  
 Total Fees: \$9.00

PREPARED BY: SCOTT SURVEY, INC. P.O. BOX 315 CENTER POINT IOWA 52213 319-540-5263

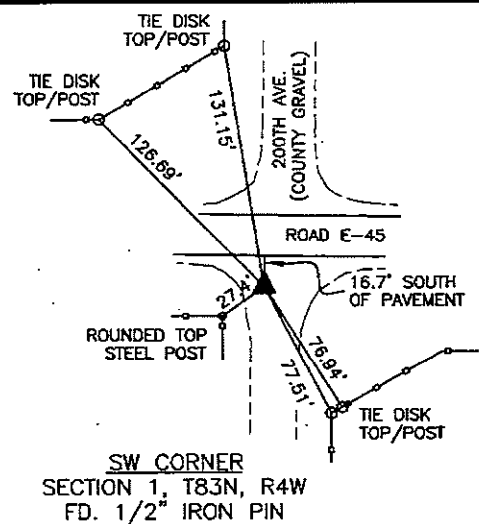
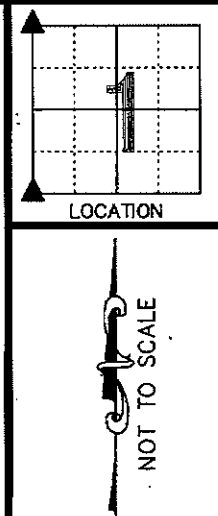
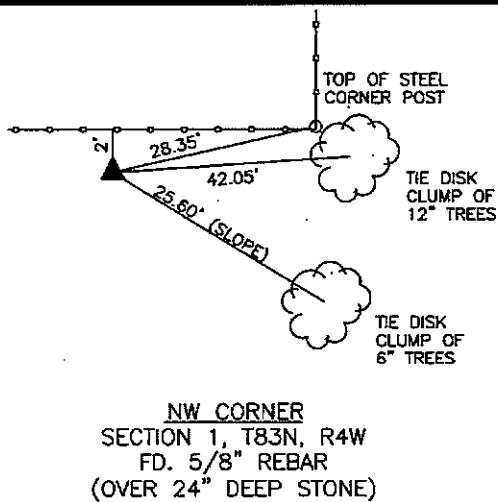
# U.S. PUBLIC LAND SURVEY CORNER CERTIFICATE

FOR LAND SURVEY MONUMENTS SITUATED IN SECTION 1, TOWNSHIP 83 NORTH, RANGE 4 WEST, OF THE FIFTH PRINCIPAL MERIDIAN, JONES COUNTY, IOWA

**REASON FOR PREPARING CERTIFICATE:**

- A) THERE IS NO CERTIFICATE FOR THE CORNER ON FILE WITH THE RECORDER.  
 B) CORNER TIES DIFFER FROM PREVIOUSLY RECORDED CERTIFICATE.

## RECOVERY TIE DRAWING

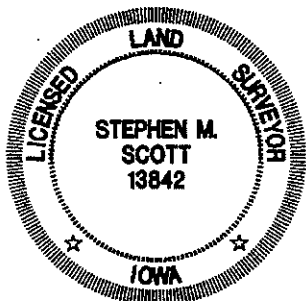


**MONUMENT DESCRIPTION AND REMARKS :**

FOUND MONUMENT BASED ON CORNER TIES FOUND IN THE OFFICE OF THE ENGINEER, JONES COUNTY, IOWA. NOTES SAY THAT A LIMESTONE WAS FOUND AND LOWERED. SCM PLACED OVER TOP. IT APPEARS THAT GRADING AND DEMOLITION OF WINDMILL HAVE REMOVED SCM.

**MONUMENT DESCRIPTION AND REMARKS :**

FOUND MONUMENT ACCORDING TO CORNER TIES FOUND IN THE OFFICE OF THE ENGINEER, JONES COUNTY, IOWA.



I hereby certify that this land surveying document was prepared and the related survey work was performed by me or under my direct personal supervision and that I am a duly licensed Land Surveyor under the laws of the State of Iowa.

*Stephen M. Scott*  
 \_\_\_\_\_, 2010  
 STEPHEN M. SCOTT, L.S. Iowa Lic. No. 13842  
 My license renewal date is December 31, 2010.

- LEGEND**
- △ GOVERNMENT CORNER
  - 1/2" TIE PIN SET
  - CENTERLINE
  - - - EXISTING FENCE LINE
  - - - R.O.W. LINE

**U.S. PUBLIC LAND SURVEY CORNER CERTIFICATE**

SECTION 1, T83N, R4W  
 NW CORNER  
 SW CORNER

PROJECT NO.  
 1015501

# THIS IS NOT A CERTIFICATION

JONES COUNTY ENGINEER'S OFFICE, 19501 HWY. 64, ANAMOSA, IOWA, 52205 (319)462-3785

## UNITED STATES PUBLIC LAND SURVEY CORNER CERTIFICATE

LAND SURVEY MONUMENTS SITUATED IN SECTION 11, TOWNSHIP 83  
NORTH, RANGE 4 WEST OF THE 5TH P.M., JONES COUNTY, IOWA

CORNERS TO BE INDEXED

CORNER NORTHEAST	SECTION 11	TOWNSHIP 83N	RANGE 4W
---------------------	---------------	-----------------	-------------

OFFICE FILE NO. \_\_\_\_\_  
83411e\_080803.jpg

1244

PREVIOUSLY RECORDED IN BOOK #129, PAGE \_\_\_\_\_  
MONUMENT DESCRIPTION AND HOW ESTABLISHED IN 1967 COUNTY SURVEY CREW FOUND STANDARD CONCRETE MONUMENT 3.5' BELOW SURFACE OF ROADWAY, SET IRON PIN DIRECTLY ABOVE SCM. IN 1972 COUNTY SURVEY CREW DUG DOWN 8" AND FOUND IRON PIN, SET REFERENCE POINTS AND TIED OUT AS INDICATED. NORTHEAST CORNER SECTION 11, TOWNSHIP 83 NORTH, RANGE 4 WEST OF 5TH PM, JONES COUNTY, IOWA.

CORNERS TO BE INDEXED

CORNER NORTH-1/4	SECTION 11	TOWNSHIP 83N	RANGE 4W
---------------------	---------------	-----------------	-------------

OFFICE FILE NO. \_\_\_\_\_  
83411c\_080803.jpg

1245

PREVIOUSLY RECORDED IN BOOK #129, PAGE \_\_\_\_\_  
MONUMENT DESCRIPTION AND HOW ESTABLISHED IN 1968 COUNTY SURVEY CREW FOUND STANDARD CONCRETE MONUMENT 2' BELOW SURFACE PRIOR TO PAVING. IN 1972 COUNTY SURVEY CREW SET BRASS PLUG IN CONCRETE AFTER PAVING. NORTH QUARTER CORNER SECTION 11, TOWNSHIP 83 NORTH, RANGE 4 WEST OF THE 5TH PRINCIPAL, JONES COUNTY, IOWA. SET REFERENCE POINTS AND TIED OUT AS INDICATED.

CORNERS TO BE INDEXED

CORNER	SECTION	TOWNSHIP	RANGE
--------	---------	----------	-------

OFFICE FILE NO. \_\_\_\_\_

1246

PREVIOUSLY RECORDED IN BOOK #6, PAGE 39  
MONUMENT DESCRIPTION AND HOW ESTABLISHED \_\_\_\_\_  
\_\_\_\_\_

CORNERS TO BE INDEXED

CORNER EAST QUARTER	SECTION 11	TOWNSHIP 83N	RANGE 4W
------------------------	---------------	-----------------	-------------

OFFICE FILE NO. \_\_\_\_\_  
83411o\_080803.jpg

1246

PREVIOUSLY RECORDED IN BOOK #6, PAGE 39  
MONUMENT DESCRIPTION AND HOW ESTABLISHED IN 1936, COUNTY SURVEY CREW FOUND 4"x10"x16" LIMESTONE AT ROAD INTERSECTION. LOWERED STONE TO DEPTH OF 5' AND SET STANDARD CONCRETE MONUMENT DIRECTLY ABOVE WITH TOP OF MONUMENT 16" BELOW PRESENT ROAD SURFACE. SET REFERENCE POINTS AND TIED OUT AS INDICATED. EAST QUARTER CORNER SECTION 11, TOWNSHIP 83 NORTH, RANGE 4 WEST OF 5TH PM, JONES COUNTY, IOWA.

~~I hereby declare that this plat, survey or report was made by me or under my direct personal supervision and that I am a duly registered Land Surveyor under the laws of the State of Iowa.~~

Signed: \_\_\_\_\_

SEAL

JONES COUNTY  
ENGINEER'S OFFICE

19501 HWY. 64,  
ANAMOSA, IOWA,  
52205 (319)462-3785