

FILED
RECORDERS OFFICE
JONES COUNTY IOWA

05 JAN 14 PM 1:34

MARIE KRUTZFIELD
RECORDER No Fee

J.D. TJEPKES, LS. JONES COUNTY ENGINEER'S OFFICE, 19501 HWY. 64, ANAMOSA, IOWA, 52205 (319)462-3785

UNITED STATES PUBLIC LAND SURVEY CORNER CERTIFICATE

LAND SURVEY MONUMENTS SITUATED IN SECTION 12, TOWNSHIP 83
NORTH, RANGE 4 WEST OF THE 5TH P.M., JONES COUNTY, IOWA

CORNERS TO BE INDEXED

CORNER	SECTION	TOWNSHIP	RANGE
NE-SE-SE	12	83N	4W

OFFICE FILE NO. 83412t_011005.tif

NE-SE-SE SEC. 12 83-4 SET 1/2"X24" REBAR W/CAP #11954

STA 68+57.000 METRIC

FIELD NOTES: 8-27-2002 BK 335 P 53

PREVIOUSLY RECORDED IN BOOK NA, PAGE NA
MONUMENT DESCRIPTION AND HOW ESTABLISHED

NOTE: HALL & HALL MARKED LOCATION IN CONJUNCTION WITH JONES CO. PROJECT NO. CO-53(38)--55-53. SET 1/2"X24" REBAR W/CAP #11954. RETIED AS INDICATED. NORTHEAST CORNER, SOUTHEAST QUARTER, SOUTHEAST QUARTER, SECTION 12, T83N R4W, JONES COUNTY, IOWA.

CORNERS TO BE INDEXED

CORNER	SECTION	TOWNSHIP	RANGE
E-QUARTER	12	83N	4W

OFFICE FILE NO. 83412o_011005.tif

SET 1/2"X24" REBAR W/CAP #11954

PI STA 72+60.468 METRIC

FIELD NOTES: 8-27-2002 BK 335 P 54

PREVIOUSLY RECORDED IN BOOK NA, PAGE NA
MONUMENT DESCRIPTION AND HOW ESTABLISHED

NOTE: HALL & HALL MARKED LOCATION IN CONJUNCTION WITH JONES CO. PROJECT NO. CO-53(38)--55-53. SET 1/2"X24" REBAR W/CAP #11954. RETIED AS INDICATED. EAST QUARTER CORNER, SECTION 12 T83N R4W, JONES COUNTY, IOWA.

CORNERS TO BE INDEXED

CORNER	SECTION	TOWNSHIP	RANGE
NE-SE-NE	12	83N	4W

OFFICE FILE NO. 83412j_011005.tif

PI STA 76+632.257 METRIC

NE-SE-NE SEC. 12 83-4 SET 1/2"X24" REBAR W/CAP #11954

FIELD NOTES: 8-27-2002 BK 335 P 54

PREVIOUSLY RECORDED IN BOOK NA, PAGE NA
MONUMENT DESCRIPTION AND HOW ESTABLISHED

NOTE: HALL & HALL MARKED LOCATION IN CONJUNCTION WITH JONES CO. PROJECT NO. CO-53(38)--55-53. SET 1/2"X24" REBAR W/CAP #11954. RETIED AS INDICATED. NORTHEAST CORNER, SOUTHEAST QUARTER, NORTHEAST QUARTER, SECTION 12, T83N R4W, JONES COUNTY, IOWA.

CORNERS TO BE INDEXED

CORNER	SECTION	TOWNSHIP	RANGE
NORTHEAST	12	83N	4W

OFFICE FILE NO. 83412e_011005.tif

NE COR. 12-83-4 SET 1/2"X24" REBAR W/CAP #11954

STA 80+67.00 METRIC

FIELD NOTES: 8-27-2002 BK 335 P 55

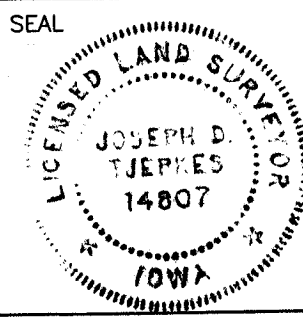
PREVIOUSLY RECORDED IN BOOK NA, PAGE NA
MONUMENT DESCRIPTION AND HOW ESTABLISHED

NOTE: HALL & HALL MARKED LOCATION IN CONJUNCTION WITH JONES CO. PROJECT NO. CO-53(38)--55-53. SET 1/2"X24" REBAR W/CAP #11954. RETIED AS INDICATED. NORTHEAST CORNER SECTION 12, T83N R4W, JONES COUNTY, IOWA.

I hereby declare that this plat, survey or report was made by me or under my direct personal supervision and that I am a duly registered Land Surveyor under the laws of the State of Iowa.

Signed: *[Signature]* 1-14-05

Joseph D. Tjepkes L.S. Iowa Reg. No. 14807
My Registration Renewal Date is December 31, 2006



J.D. TJEPKES LS 14807
JONES COUNTY
ENGINEER'S OFFICE

19501 HWY. 64,
ANAMOSA, IOWA,
52205 (319)462-3785

B

2003 1053

FILED
RECORDERS OFFICE
JONES COUNTY IOWA

03 MAR 13 PM 12:55

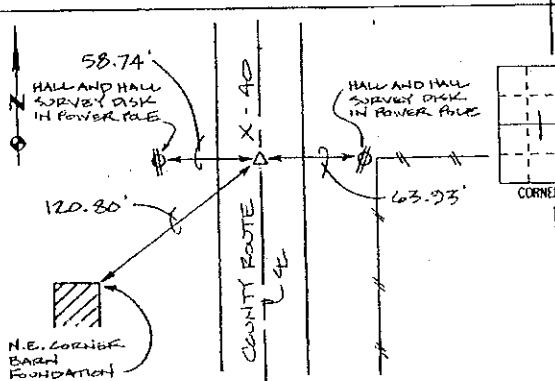
MARIE KRUTZFIELD
RECORDER 6008

PREPARED BY HALL & HALL ENGINEERS, INC. 209 29TH STREET N.E. CEDAR RAPIDS, IOWA 52402 (319) 362-9548

LAND SURVEY MONUMENTS SITUATED IN SECTION 12, TOWNSHIP 83 NORTH,
RANGE 4 WEST, OF THE FIFTH PRINCIPAL MERIDIAN, JONES COUNTY IOWA.

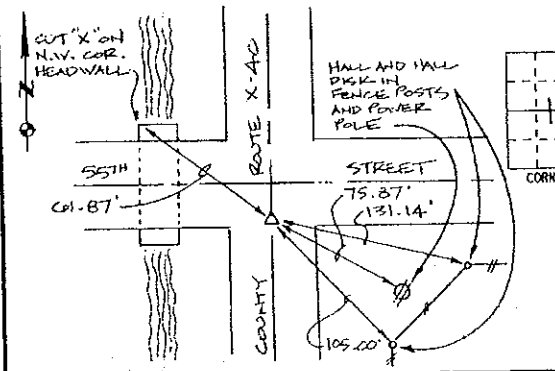
RECOVERY TIE DRAWING

MONUMENT DESCRIPTION AND REMARKS:



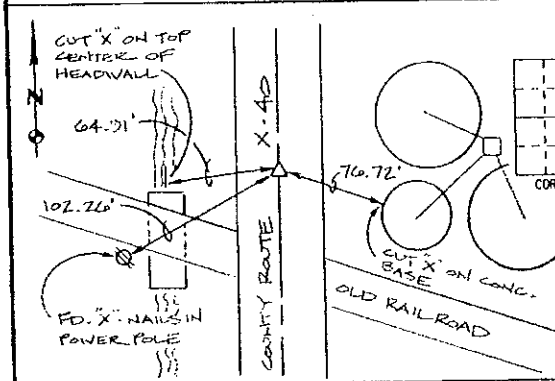
N.E. CORNER, S.E. 1/4 - N.E. 1/4
SECTION 12, T83N, R4W

REASON FOR PREPARING CERTIFICATE: A, B, C OR D
PREVIOUS BOOK _____, PAGE _____
SET 1/2" REBAR WITH RED L.S.
CAP # 11954



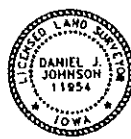
E. 1/4 COR., SECTION 12, T83N, R4W

REASON FOR PREPARING CERTIFICATE: A, B, C OR D
PREVIOUS BOOK _____, PAGE _____
SET 1/2" REBAR WITH RED L.S.
CAP # 11954



S.E. COR., SECTION 12, T83N, R4W

REASON FOR PREPARING CERTIFICATE: A, B, C OR D
PREVIOUS BOOK _____, PAGE _____
SET 1/2" REBAR WITH RED L.S.
CAP # 11954



I hereby certify that this land surveying document was prepared and the related survey work was performed by me or under my direct personal supervision and that I am a duly licensed Land Surveyor under the laws of the State of Iowa.

Signed: *Daniel J. Johnson* Date: 2-27-03
Daniel J. Johnson, L.S. 11954
My license renewal date is December 31, 2004

Pages or sheets covered by this seal:
(Entire submission unless specified here) 1

- REASON FOR PREPARING CERTIFICATE:
- A) THERE IS NO CERTIFICATE FOR THE CORNER ON FILE WITH THE RECORDER OF THE COUNTY IN WHICH THE CORNER IS LOCATED.
 - B) CORNER POSITION DIFFERS FROM THAT SHOWN IN THE PUBLIC RECORDS OF THE COUNTY IN WHICH THE CORNER IS LOCATED.
 - C) THE CORNER MONUMENT HAS BEEN REPLACED OR MODIFIED.
 - D) THE REFERENCE TIES REFERRED TO IN AN EXISTING PUBLIC RECORD ARE INCORRECT OR MISSING.

SHEET NO: U.S. PUBLIC LAND SURVEY CORNER CERTIFICATE
PROJECT NO: JONES COUNTY X-40

DATE: 7/15/02

HALL AND HALL ENGINEERS, INC.
209 29TH STREET N.E.
CEDAR RAPIDS, IOWA 52402
(319) 362-9548

SCALE: NONE
P. NO. B-201113
P. NO. R-3
P. NO. D-6125

2002 3009

FILED
RECORDERS OFFICE
JONES COUNTY IOWA

83412j-081602
83412b-081602
83413e-081602

02 AUG 16 PM 12:35

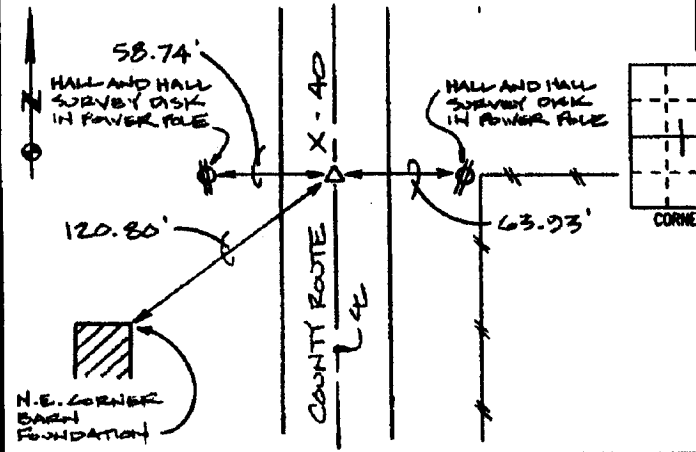
MARIE KRUTZFIELD
RECORDER 6.00pd

PREPARED BY HALL & HALL ENGINEERS, INC. 209 29TH STREET N.E. CEDAR RAPIDS, IOWA 52402 (319) 362-9548

LAND SURVEY MONUMENTS SITUATED IN SECTION 12, TOWNSHIP 83 NORTH,
RANGE 4 WEST, OF THE FIFTH PRINCIPAL MERIDIAN, JONES COUNTY IOWA.

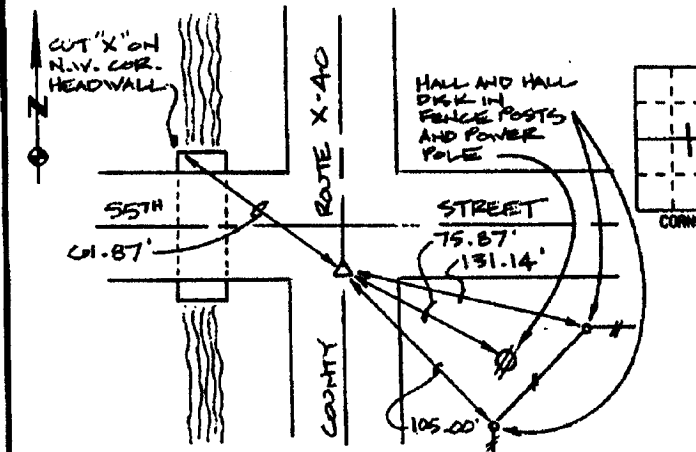
RECOVERY TIE DRAWING

MONUMENT DESCRIPTION AND REMARKS:



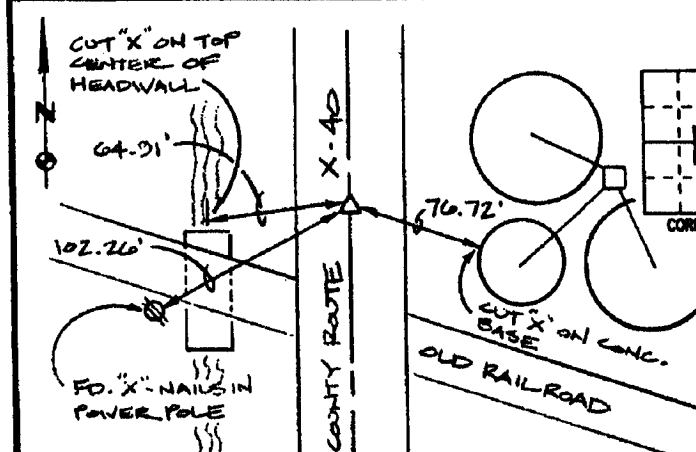
N.E. CORNER, S.E. 1/4 - N.E. 1/4
SECTION 12, T83N, R4W

REASON FOR PREPARING CERTIFICATE: (A) B, C OR D
PREVIOUS BOOK _____ PAGE _____
SET 1/2" REBAR WITH RED L.S.
CAP # 11954



E. 1/4 COR., SECTION 12, T83N, R4W

REASON FOR PREPARING CERTIFICATE: (A) B, C OR D
PREVIOUS BOOK _____ PAGE _____
SET 1/2" REBAR WITH RED L.S.
CAP # 11954



S.E. COR., SECTION 12, T83N, R4W

REASON FOR PREPARING CERTIFICATE: (A) B, C OR D
PREVIOUS BOOK _____ PAGE _____
SET 1/2" REBAR WITH RED L.S.
CAP # 11954



I hereby certify that this land surveying document was prepared and the related survey work was performed by me or under my direct personal supervision and that I am a duly licensed Land Surveyor under the laws of the State of Iowa.

Signed: Daniel J. Johnson Date: 8-16-02

Daniel J. Johnson, L.S. No. 11954
My license renewal date is December 31, 2002

Pages or sheets covered by this seal:
(Entire submission unless specified here) 1 of 1

REASON FOR PREPARING CERTIFICATE::

- A) THERE IS NO CERTIFICATE FOR THE CORNER ON FILE WITH THE RECORDER OF THE COUNTY IN WHICH THE CORNER IS LOCATED.
- B) CORNER POSITION DIFFERS FROM THAT SHOWN IN THE PUBLIC RECORDS OF THE COUNTY IN WHICH THE CORNER IS LOCATED.
- C) THE CORNER MONUMENT HAS BEEN REPLACED OR MODIFIED.
- D) THE REFERENCE TIES REFERRED TO IN AN EXISTING PUBLIC RECORD ARE INCORRECT OR MISSING.

SHEET TITLE: U.S. PUBLIC LAND SURVEY CORNER CERTIFICATE

PROJECT: JONES COUNTY X-40



HALL AND HALL ENGINEERS, INC.
209 29TH STREET N.E.
CEDAR RAPIDS, IOWA 52402
(319) 362-9548

SCALE: NONE	PNB COUNTY 3	PNB 6125
-------------	--------------	----------

2003 1086

FILED
RECORDERS OFFICE
JONES COUNTY IOWA

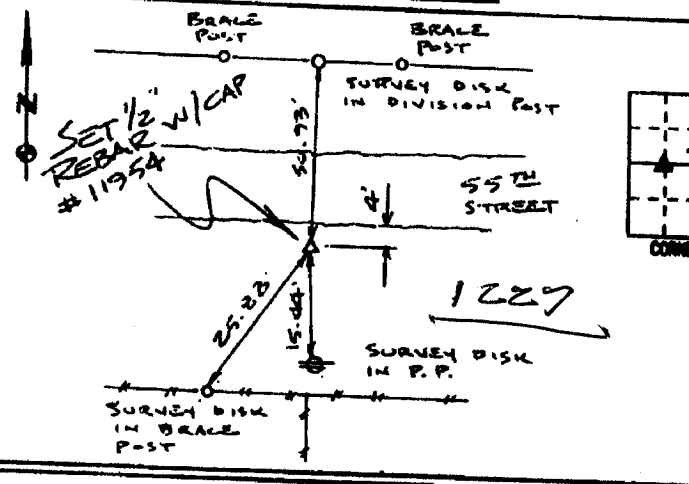
03 MAR 13 PM 1:33

MARIE KRUTZFIELD
RECORDER 6:00 Pd

PREPARED BY HALL & HALL ENGINEERS, INC. 209 29TH STREET N.E. CEDAR RAPIDS, IOWA 52402 (319) 362-9548

LAND SURVEY MONUMENTS SITUATED IN SECTION 7, TOWNSHIP 83 NORTH,
RANGE 3 WEST, OF THE FIFTH PRINCIPAL MERIDIAN, JONES COUNTY IOWA.

RECOVERY TIE DRAWING

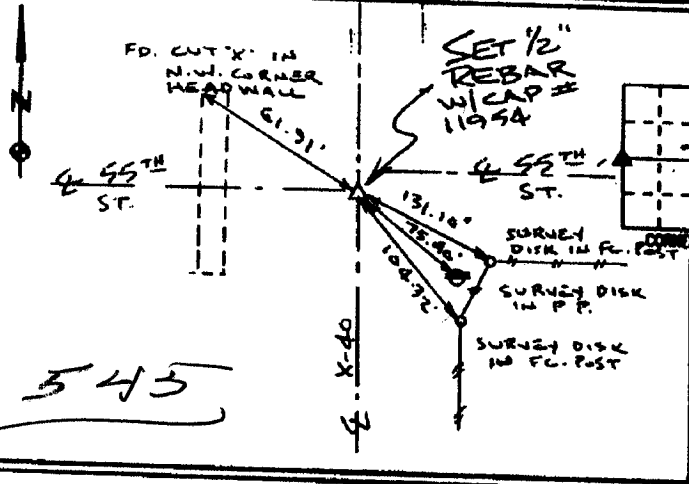


MONUMENT DESCRIPTION AND REMARKS:
NE COR-NW-SW SECTION 7-83-3

REASON FOR PREPARING CERTIFICATE: (A) B, C OR D
PREVIOUS BOOK _____, PAGE _____
SET 1/2" REBAR W/ RED L.S. CAP
11954 FLUSH W/ SURFACE 4'
SOUTH OF SOUTH EDGE 55TH ST.

IN LINE W/ FENCE SOUTH BY
SPLITTING DISTANCE FROM W/4
CORNER TO CENTER OF SECTION 7

833071-120700



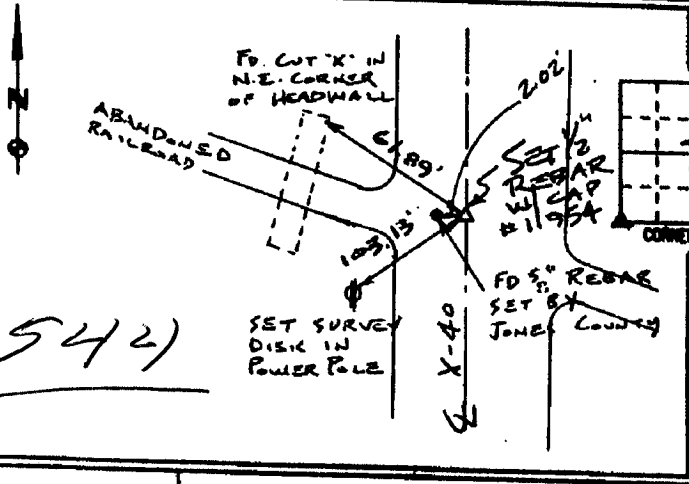
W/4 CORNER SECTION 7-83-3

REASON FOR PREPARING CERTIFICATE: (A) B, C OR D
PREVIOUS BOOK _____, PAGE _____
SET 1/2" REBAR W/ RED L.S. CAP
11954 2" DEEP ON E X-40
AND E 55TH STREET WEST

SET THIS PIN @ LOCATION OF FOUND
PIN BEFORE X-40 GRADING

834120-120700

~~833076-120700~~



S.W. CORNER SECTION 7-83-3

REASON FOR PREPARING CERTIFICATE: (A) B, C OR D
PREVIOUS BOOK _____, PAGE _____
SET 1/2" REBAR W/ RED L.S. CAP
11954 2" DEEP ON E X-40

SET THIS PIN @ LOCATION OF
FOUND PIN BEFORE X-40 GRADING

~~833076-120700~~

834130-120700



I hereby certify that this land surveying document was prepared and the related survey work was performed by me or under my direct personal supervision and that I am a duly licensed Land Surveyor under the laws of the State of Iowa.

Signed: *Daniel J. Johnson* Date: 12-7-00
Daniel J. Johnson, L.S. 1984
My license expires on December 31, 2000

Pages or sheets covered by this book
(Entire submission unless specified here)

REASON FOR PREPARING CERTIFICATE:

- A) THERE IS NO CERTIFICATE FOR THE CORNER ON FILE WITH THE RECORDER OF THE COUNTY IN WHICH THE CORNER IS LOCATED.
- B) CORNER POSITION DIFFERS FROM THAT SHOWN IN THE PUBLIC RECORDS OF THE COUNTY IN WHICH THE CORNER IS LOCATED.
- C) THE CORNER MONUMENT HAS BEEN REPLACED OR MODIFIED.
- D) THE REFERENCE TIES REFERRED TO IN AN EXISTING PUBLIC RECORD ARE INCORRECT OR MISSING.

SHEET NO. U.S. PUBLIC LAND SURVEY CORNER CERTIFICATE

PROJECT NAME: IVAN BOWERS SURVEY

HALL AND HALL ENGINEERS, INC.
209 29TH STREET N.E.
CEDAR RAPIDS, IOWA 52402
(319) 362-9548

DATE: 3/20/00 SCALE: NONE P. NO. 0T58 P. NO. 6955

SECTION CORNER CERTIFICATE

OF
 LAND SURVEY MONUMENTS SITUATED IN SECTION 7, TOWNSHIP 83 NORTH,
 RANGE 3 WEST, OF THE FIFTH PRINCIPAL MERIDIAN, JONES, COUNTY, IOWA.

PREVIOUSLY RECORDED IN BOOK _____ AT PAGE _____.

FOR RECORDER'S USE

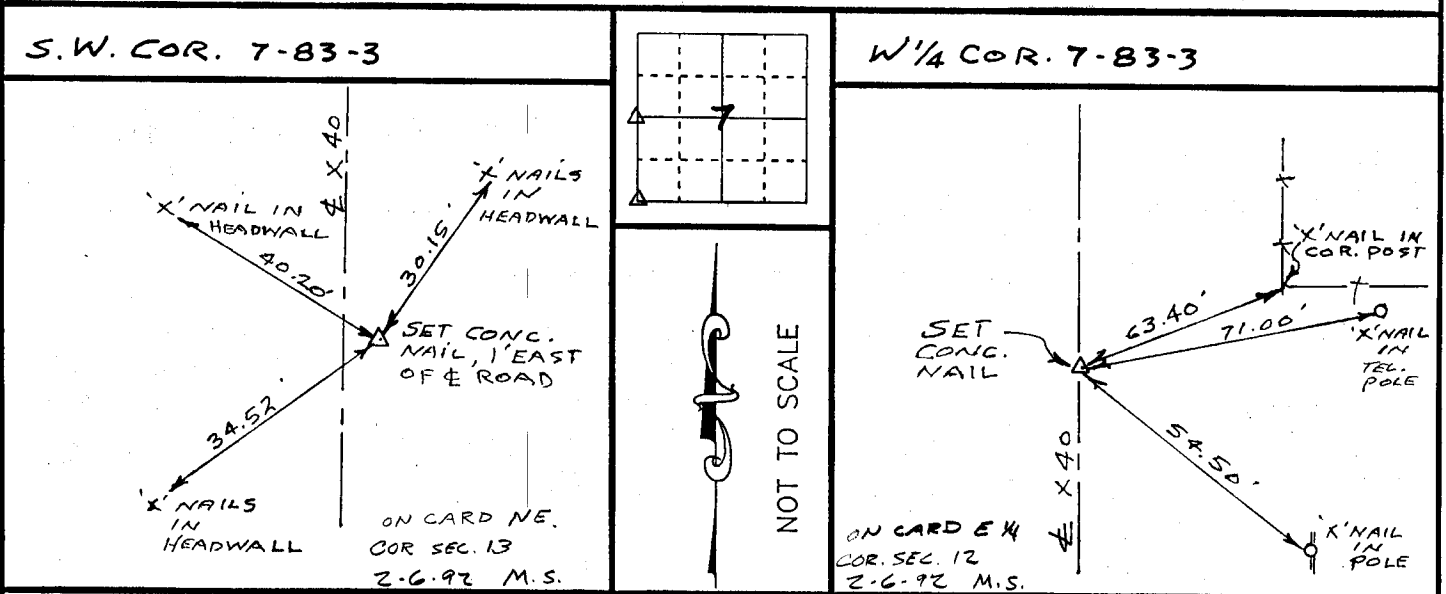
REASON FOR PREPARING CERTIFICATE:

- A) THERE IS NO CERTIFICATE FOR THE CORNER ON FILE WITH THE RECORDER OF THE COUNTY IN WHICH THE CORNER IS LOCATED.
- B) CORNER POSITION DIFFERS FROM THAT SHOWN IN THE PUBLIC RECORDS OF THE COUNTY IN WHICH THE CORNER IS LOCATED.
- C) THE CORNER MONUMENT HAS BEEN REPLACED OR MODIFIED.
- D) THE REFERENCE TIES REFERRED TO IN AN EXISTING PUBLIC RECORD ARE INCORRECT.

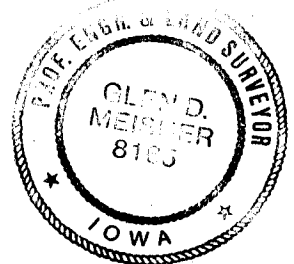
MONUMENT DESCRIPTION AND REMARKS :

S.W. CORNER SECTION 7-T83N-R3W SET CONC. NAIL 1.0' EAST OF
 & OF PAVED COUNTY ROAD X-40
 W/4 CORNER SECTION 7-T83N-R3W SET CONC. NAIL ON & OF
 PAVED COUNTY ROAD X-40

RECOVERY TIE DRAWING



I, GLEN D. MEISNER, CERTIFY THAT THE CORNER LOCATION(S) SHOWN ON THIS RECORD WERE DETERMINED BY ME OR UNDER MY DIRECTION AND CONTROL AND THAT THIS U.S. PUBLIC LAND SURVEY MONUMENT RECORD IS CORRECT AND COMPLETE TO THE BEST OF MY KNOWLEDGE AND BELIEF.



Glen D. Meisner 1-22 -92
 GLEN D. MEISNER L.S. NO 8165 DATE

LEGEND	▲ GOVERNMENT CORNER ○ 5/8" TIE PIN SET --- CENTERLINE -x-x- EXISTING FENCE LINE - - - R.O.W. LINE	SHEET TITLE: U.S. PUBLIC LAND SURVEY RECORD PROJECT TITLE: SCOTT	H	HALL AND HALL ENGINEERS, INC. 226 29TH STREET DRIVE S.E. CEDAR RAPIDS, IOWA 52403 319-362-9548
	D W N D.W.S. K I C A P P	DATE: 6-12-91 SCALE: NONE		F NO B P NO J 4440