

COPY

Jones County Iowa  
 Marie Krutzfield, Recorder  
 Fee Book 2010 3639  
 12/22/2010 @1207PM  
 ZSC SEC COR CERT  
 Book: Page: # Pages: 1  
 Total Fees: \$0.00

PREPARED BY  
 CLARENCE J. WALTON, JONES COUNTY ENGINEER'S OFFICE, 19501 HWY. 64, ANAMOSA, IOWA, 52205 (319) 462-3785

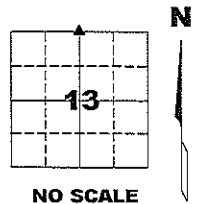
# AMENDED UNITED STATES PUBLIC LAND SURVEY CORNER CERTIFICATE

**LAND SURVEY MONUMENTS SITUATED IN SECTION 13, TOWNSHIP 83 NORTH,  
 RANGE 4 WEST OF THE 5TH PRINCIPAL MERIDIAN, JONES COUNTY, IOWA.**

**PROJECT: 1211**

STATE PLANE COORDINATE  
 NAD 83 IOWA NORTH  
 N 3473134.43  
 E 5530440.15

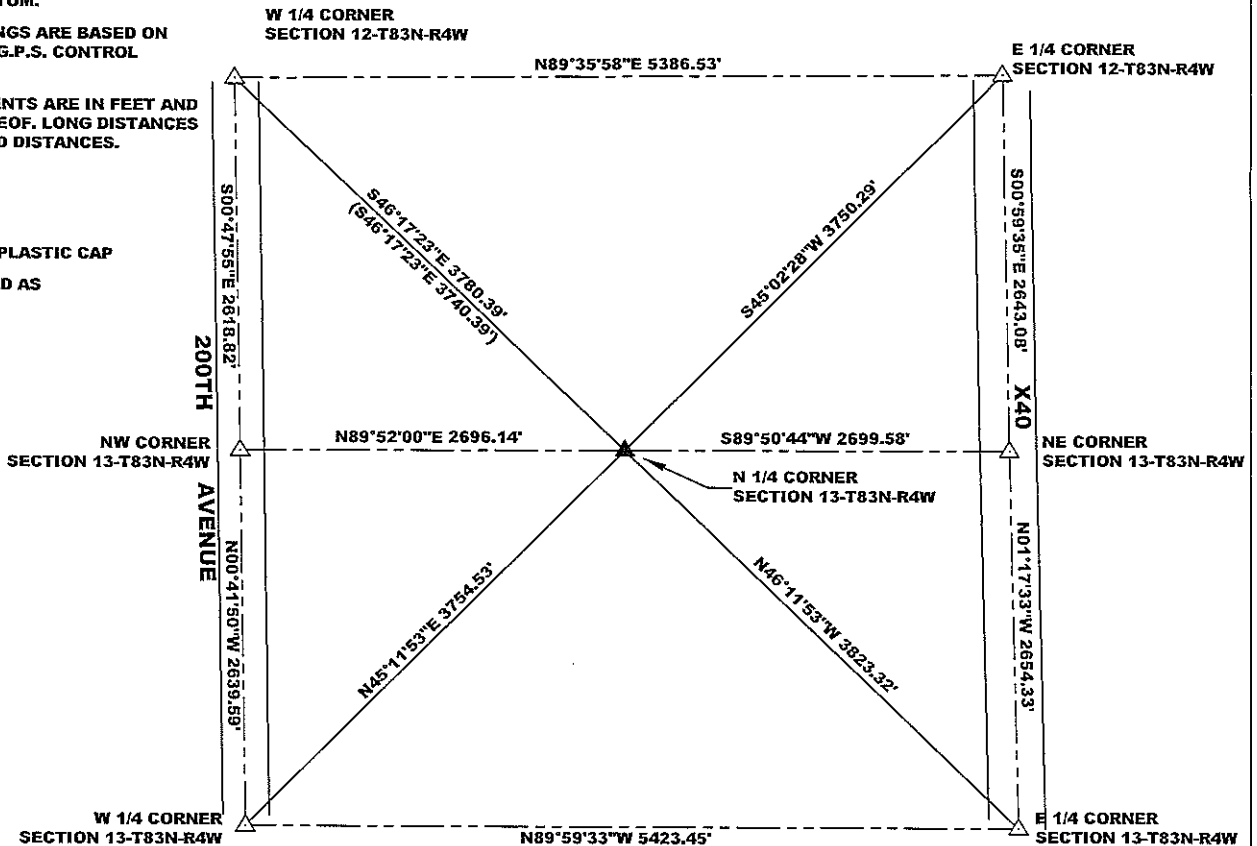
CORNER SECTION TOWNSHIP RANGE  
 N 1/4 CORNER 13 T83N R4W



**NOTES:**

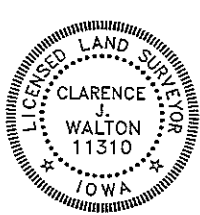
- 1) THE STATE PLANE COORDINATES AS SHOWN ARE FOR CONVENIENCE ONLY. THE TIES AS SHOWN SHOULD BE USED TO REPLACE THE CORNER, IF DESTROYED.
- 2) COORDINATES AS SHOWN ARE GRID COORDINATES AND BASED ON JONES COUNTY G.P.S. CONTROL NETWORK WHICH IN TURN IS BASED ON NAD 83 IOWA NORTH DATUM.
- 3) BASIS OF BEARINGS ARE BASED ON JONES COUNTY G.P.S. CONTROL NETWORK.
- 4) ALL MEASUREMENTS ARE IN FEET AND DECIMALS THEREOF. LONG DISTANCES SHOWN ARE GRID DISTANCES.

OPC ORANGE PLASTIC CAP  
 ( ) RECORDED AS



PREVIOUSLY RECORDED IN RECORDER'S DOCUMENT 2010 3470

**MONUMENT DESCRIPTION AND HOW ESTABLISHED** FOUND 1/2" X 30" REBAR WITH YELLOW PLASTIC CAP #11310 1" BELOW CURRENT GROUND SURFACE. THE NORTH SOUTH FENCE THAT WAS HERE HAS BEEN RECENTLY BULLDOZED OUT AND THE ADJACENT DRAINAGE DITCH HAS BEEN WIDENED WE PROBED EXTENSIVELY AND FOUND NOTHING OF THE SECTION CORNER MONUMENT (CONCRETE) NOR THE REFERENCE MONUMENT. SET A STEEL FENCE POST WITH A "SURVEY MARKER" SIGN AS A WITNESS AND TO PROTECT THE CORNER. THERE ARE NO NEARBY DISTINCTIVE FEATURES TO REFERENCE TO. FIELD BOOK MISC. 2009-2010, PAGE 152. DATE OF SURVEY: 11/8/10



I hereby certify that this land surveying document and the related survey work was performed by me or under my direct personal supervision and that I am a duly registered Land Surveyor under the laws of the State of Iowa.  
 Signed: *Clarence J. Walton* 12/20/10  
 Clarence J. Walton, L.S.  
 My Registration Renewal Date is December 31, 2011  
 Iowa License Number 11310  
 Pages or sheets covered by this seal: 1 of 1.

- A. THERE IS NO CERTIFICATE FOR THE CORNER ON FILE WITH THE RECORDER OF THE COUNTY IN WHICH THE CORNER IS LOCATED.
- B. THE CORNER MONUMENT HAS BEEN REPLACED OR MODIFIED.
- C. THE SURVEYOR IN RESPONSIBLE CHARGE OF THE LAND SURVEYING ACCEPTS A CORNER POSITION THAT DIFFERS FROM THAT SHOWN IN THE PUBLIC RECORDS OF THE COUNTY IN WHICH THE CORNER IS LOCATED.
- D. THE REFERENCE TIES REFERRED TO IN AN EXISTING PUBLIC RECORD NO LONGER EXIST.

**CORNERS TO BE INDEXED**

CORNER	SECTION	TOWNSHIP	RANGE
N 1/4 CORNER	13	83N	4W
S 1/4 CORNER	12	83N	4W

**JONES COUNTY ENGINEER'S OFFICE**



19501 HWY. 64, ANAMOSA, IOWA 52205  
 (319) 462-3785

COPY

Jones County Iowa  
 Marie Krutzfield, Recorder  
 Fee Book 2010 3470  
 12/13/2010 @1210PM  
 ZSC SEC COR CERT  
 Book: Page: # Pages: 1  
 Total Fees: \$0.00

PREPARED BY  
 CLARENCE J. WALTON, JONES COUNTY ENGINEER'S OFFICE, 19501 HWY. 64, ANAMOSA, IOWA, 52205 (319) 462-3785

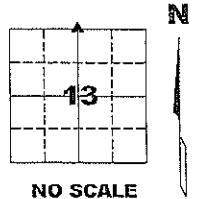
# UNITED STATES PUBLIC LAND SURVEY CORNER CERTIFICATE

LAND SURVEY MONUMENTS SITUATED IN SECTION 13, TOWNSHIP 83 NORTH,  
 RANGE 4 WEST OF THE 5TH PRINCIPAL MERIDIAN, JONES COUNTY, IOWA.

PROJECT: 1211

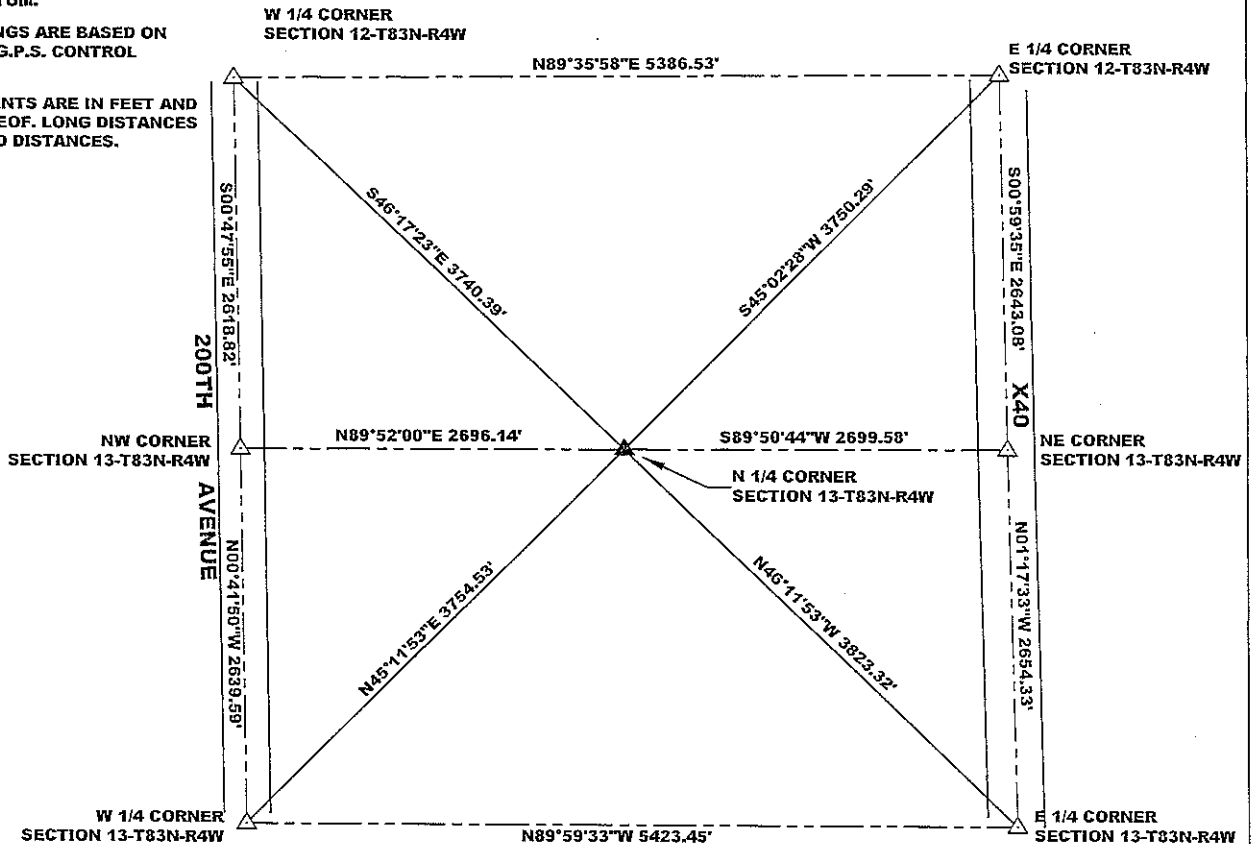
STATE PLANE COORDINATE  
 NAD 83 IOWA NORTH  
 N 3473134.43  
 E 5530440.15

CORNER SECTION TOWNSHIP RANGE  
 N 1/4 CORNER 13 T85N R3W

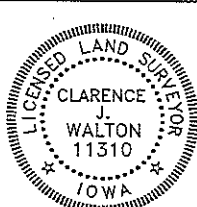


NOTES:

- 1) THE STATE PLANE COORDINATES AS SHOWN ARE FOR CONVENIENCE ONLY. THE TIES AS SHOWN SHOULD BE USED TO REPLACE THE CORNER, IF DESTROYED.
- 2) COORDINATES AS SHOWN ARE GRID COORDINATES AND BASED ON JONES COUNTY G.P.S. CONTROL NETWORK WHICH IN TURN IS BASED ON NAD 83 IOWA NORTH DATUM.
- 3) BASIS OF BEARINGS ARE BASED ON JONES COUNTY G.P.S. CONTROL NETWORK.
- 4) ALL MEASUREMENTS ARE IN FEET AND DECIMALS THEREOF. LONG DISTANCES SHOWN ARE GRID DISTANCES.



PREVIOUSLY RECORDED IN RECORDER'S DOCUMENT N/A  
 MONUMENT DESCRIPTION AND HOW ESTABLISHED FOUND 1/2"X30" REBAR WITH YELLOW PLASTIC CAP #11310 1" BELOW CURRENT GROUND SURFACE. THE NORTH SOUTH FENCE THAT WAS HERE HAS BEEN RECENTLY BULLDOZED OUT AND THE ADJACENT DRAINAGE DITCH HAS BEEN WIDENED WE PROBED EXTENSIVELY AND FOUND NOTHING OF THE SECTION CORNER MONUMENT (CONCRETE) NOR THE REFERENCE MONUMENT. SET A STEEL FENCE POST WITH A "SURVEY MARKER" SIGN AS A WITNESS AND TO PROTECT THE CORNER. THERE ARE NO NEARBY DISTINCTIVE FEATURES TO REFERENCE TO. FIELD BOOK MISC. 2009-2010, PAGE 152. DATE OF SURVEY: 11/8/10



I hereby certify that this land surveying document and the related survey work was performed by me or under my direct personal supervision and that I am a duly registered Land Surveyor under the laws of the State of Iowa.  
 Signed: *Clarence J. Walton* 12/9/10  
 Clarence J. Walton, L.S.  
 My Registration Renewal Date is December 31, 2011  
 Iowa License Number 11310  
 Pages or sheets covered by this seal: 1 of 1.

- A. THERE IS NO CERTIFICATE FOR THE CORNER ON FILE WITH THE RECORDER OF THE COUNTY IN WHICH THE CORNER IS LOCATED.
- B. THE CORNER MONUMENT HAS BEEN REPLACED OR MODIFIED.
- C. THE SURVEYOR IN RESPONSIBLE CHARGE OF THE LAND SURVEYING ACCEPTS A CORNER POSITION THAT DIFFERS FROM THAT SHOWN IN THE PUBLIC RECORDS OF THE COUNTY IN WHICH THE CORNER IS LOCATED.
- D. THE REFERENCE TIES REFERRED TO IN AN EXISTING PUBLIC RECORD NO LONGER EXIST.

CORNERS TO BE INDEXED

CORNER	SECTION	TOWNSHIP	RANGE
N 1/4 CORNER	13	83N	4W
S 1/4 CORNER	12	83N	4W

JONES COUNTY ENGINEER'S OFFICE



19501 HWY. 64, ANAMOSA, IOWA 52205  
 (319) 462-3785

# THIS IS NOT A CERTIFICATION

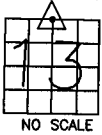
JONES COUNTY ENGINEER'S OFFICE, 19501 HWY. 64, ANAMOSA, IOWA, 52205 (319)462-3785

## UNITED STATES PUBLIC LAND SURVEY CORNER CERTIFICATE

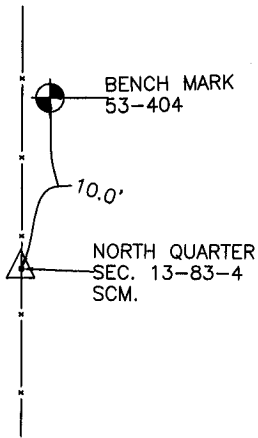
LAND SURVEY MONUMENTS SITUATED IN SECTION 12, TOWNSHIP 83  
NORTH, RANGE 4 WEST OF THE 5TH P.M., JONES COUNTY, IOWA

**CORNERS TO BE INDEXED**

CORNER SECTION TOWNSHIP RANGE  
NORTH QUARTER 13 83 4W  
OFFICE FILE NO.



83413c\_080803.jpg



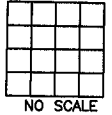
*1249*  
*A*

**ENGINEER'S CORNER STONE**

PREVIOUSLY RECORDED IN BOOK #6, PAGE 42  
MONUMENT DESCRIPTION AND HOW ESTABLISHED IN 1936 COUNTY SURVEY CREW FD LIMESTONE UNDER FENCE LINE 2' DOWN. LIMESTONE BROKEN INTO 2-LARGE PIECES AND A NUMBER OF SMALL PIECES. LOWERED STONE AND SET STANDARD CONCRETE MONUMENT DIRECTLY ABOVE. NORTH QUARTER CORNER SECTION 13, T83N, R4W OF 5TH PM, JONES COUNTY, IOWA.

**CORNERS TO BE INDEXED**

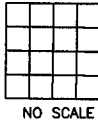
CORNER SECTION TOWNSHIP RANGE  
OFFICE FILE NO.



PREVIOUSLY RECORDED IN BOOK \_\_\_\_\_, PAGE \_\_\_\_\_  
MONUMENT DESCRIPTION AND HOW ESTABLISHED \_\_\_\_\_

**CORNERS TO BE INDEXED**

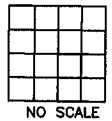
CORNER SECTION TOWNSHIP RANGE  
OFFICE FILE NO.



PREVIOUSLY RECORDED IN BOOK \_\_\_\_\_, PAGE \_\_\_\_\_  
MONUMENT DESCRIPTION AND HOW ESTABLISHED \_\_\_\_\_

**CORNERS TO BE INDEXED**

CORNER SECTION TOWNSHIP RANGE  
OFFICE FILE NO.



PREVIOUSLY RECORDED IN BOOK \_\_\_\_\_, PAGE \_\_\_\_\_  
MONUMENT DESCRIPTION AND HOW ESTABLISHED \_\_\_\_\_

~~I hereby declare that this plat, survey or report was made by me or under my direct personal supervision and that I am a duly registered Land Surveyor under the laws of the State of Iowa.~~

Signed: \_\_\_\_\_

SEAL

JONES COUNTY  
ENGINEER'S OFFICE

19501 HWY. 64,  
ANAMOSA, IOWA,  
52205 (319)462-3785