

COPY

Jones County, Iowa
 Marie Krutzfield, Recorder
 Fee Book 2010 3475

12/13/2010 @0214PM
 ZSC SEC COR CERT # Pages: 1
 Book: Page: \$0.00
 Total Fees:

PREPARED BY

CLARENCE J. WALTON, JONES COUNTY ENGINEER'S OFFICE, 19501 HWY. 64, ANAMOSA, IOWA, 52205 (319) 462-3785

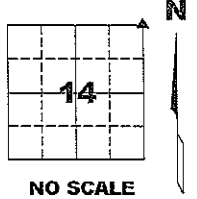
UNITED STATES PUBLIC LAND SURVEY CORNER CERTIFICATE

LAND SURVEY MONUMENTS SITUATED IN SECTION 14, TOWNSHIP 83 NORTH,
 RANGE 4 WEST OF THE 5TH PRINCIPAL MERIDIAN, JONES COUNTY, IOWA.

PROJECT: M-1211

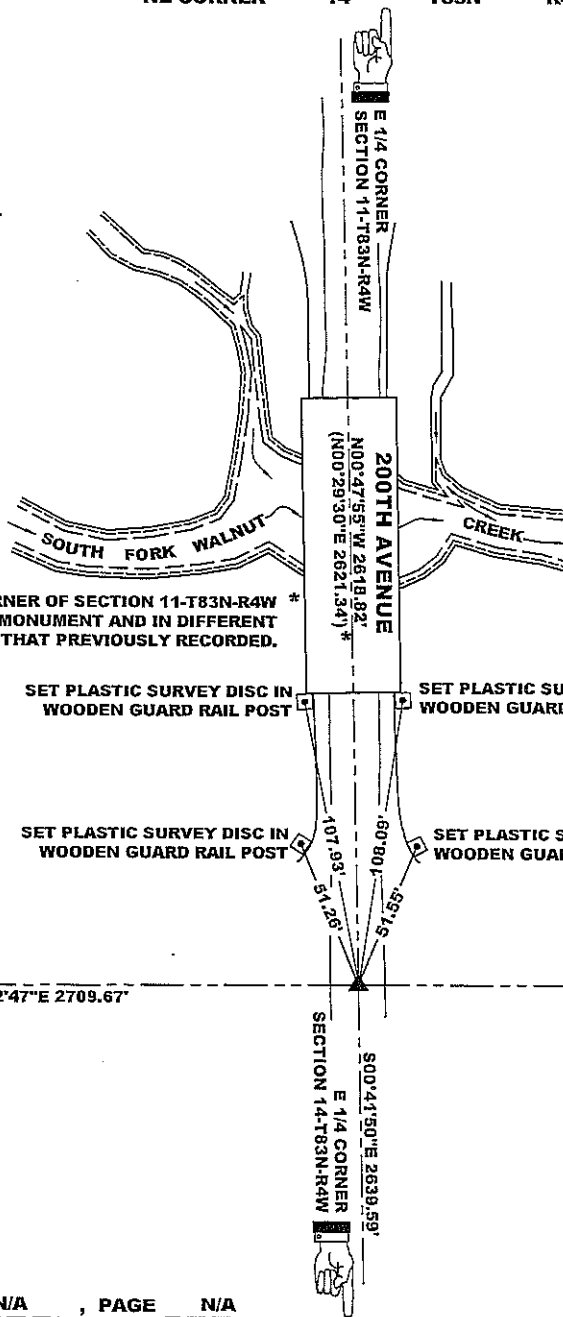
STATE PLANE COORDINATE
 NAD 83 IOWA NORTH
 N 3473128.15
 E 5527744.02

CORNER SECTION TOWNSHIP RANGE
 NE CORNER 14 T83N R4W



NOTES:

- 1) THE STATE PLANE COORDINATES AS SHOWN ARE FOR CONVENIENCE ONLY. THE TIES AS SHOWN SHOULD BE USED TO REPLACE THE CORNER, IF DESTROYED.
- 2) COORDINATES AS SHOWN ARE GRID COORDINATES AND BASED ON JONES COUNTY G.P.S. CONTROL NETWORK WHICH IN TURN IS BASED ON NAD 83 IOWA NORTH DATUM.
- 3) BASIS OF BEARINGS ARE BASED ON JONES COUNTY G.P.S. CONTROL NETWORK.
- 4) ALL MEASUREMENTS ARE IN FEET AND DECIMALS THEREOF. LONG DISTANCES SHOWN ARE GRID DISTANCES.



"SURVEY MARKER" SIGN

PLEASE PROTECT NEARBY SURVEY MARKER
 IF LOCATION OF THIS MARK IS ENDANGERED PLEASE CONTACT JONES COUNTY ENGINEER'S OFFICE 319-462-3785

SURVEY DISC



E 1/4 CORNER OF SECTION 11-T83N-R4W IS DIFFERENT MONUMENT AND IN DIFFERENT LOCATION THAN THAT PREVIOUSLY RECORDED.

SET PLASTIC SURVEY DISC IN WOODEN GUARD RAIL POST

SET PLASTIC SURVEY DISC IN WOODEN GUARD RAIL POST

SET PLASTIC SURVEY DISC IN WOODEN GUARD RAIL POST

SET PLASTIC SURVEY DISC IN WOODEN GUARD RAIL POST

N 1/4 CORNER SECTION 14-T83N-R4W

N1/4 CORNER SECTION 13-T83N-R4W

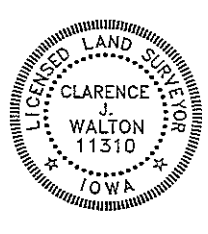
N89°42'47"E 2709.67'

N89°52'00"E 2696.14'

OPC ORANGE PLASTIC CAP
 () RECORDED AS

PREVIOUSLY RECORDED IN BOOK N/A, PAGE N/A

MONUMENT DESCRIPTION AND HOW ESTABLISHED FOUND BENT 1/2" REBAR (NO CAP) PER PLAT OF SURVEY OF PARCEL 96-72 RECORDED IN PLAT BOOK M, PAGE 4 AND IN BOOK 406, PAGE 160 IN THE JONES COUNTY, IOWA RECORDER'S OFFICE. STRAIGHTENED PIN AND LOWERED TO DEPTH OF 6". FIELD BOOK MISC. 2009-2010, PAGE 146. DATE OF SURVEY: 11/9/10



I hereby certify that this land surveying document and the related survey work was performed by me or under my direct personal supervision and that I am a duly registered Land Surveyor under the laws of the State of Iowa.
 Signed: *Clarence J. Walton* 12/9/10
 Clarence J. Walton, L.S.
 My Registration Renewal Date is December 31, 2011
 Iowa License Number 11310
 Pages or sheets covered by this seal: 1 of 1.

- A. THERE IS NO CERTIFICATE FOR THE CORNER ON FILE WITH THE RECORDER OF THE COUNTY IN WHICH THE CORNER IS LOCATED.
- B. THE CORNER MONUMENT HAS BEEN REPLACED OR MODIFIED.
- C. THE SURVEYOR IN RESPONSIBLE CHARGE OF THE LAND SURVEYING ACCEPTS A CORNER POSITION THAT DIFFERS FROM THAT SHOWN IN THE PUBLIC RECORDS OF THE COUNTY IN WHICH THE CORNER IS LOCATED.
- D. THE REFERENCE TIES REFERRED TO IN AN EXISTING PUBLIC RECORD NO LONGER EXIST.

CORNERS TO BE INDEXED

CORNER	SECTION	TOWNSHIP	RANGE
NE CORNER	14	83N	4W
SE CORNER	11	83N	4W
SW CORNER	12	83N	4W
NW CORNER	13	83N	4W

JONES COUNTY ENGINEER'S OFFICE



19501 HWY. 64, ANAMOSA, IOWA 52205
 (319) 462-3785