

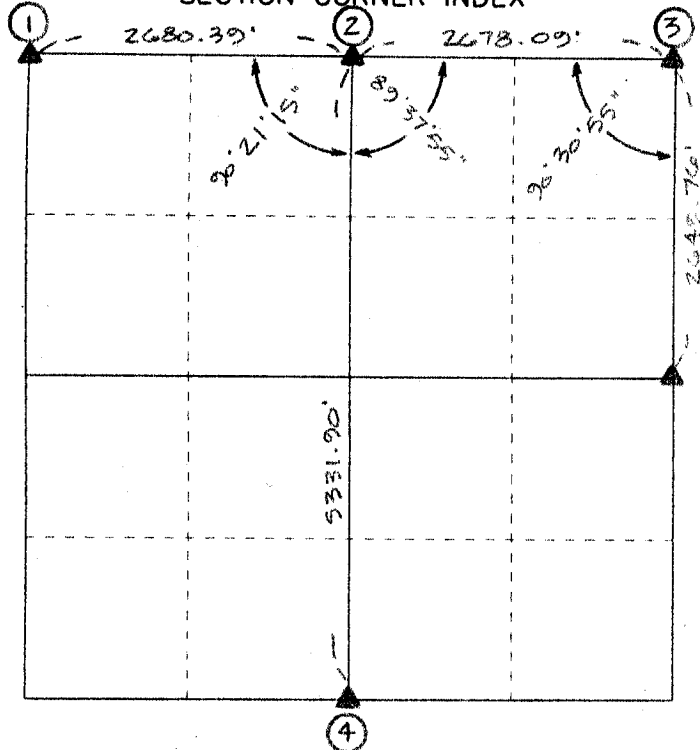
FILED
RECORDERS OFFICE
JONES COUNTY IOWA

05 JAN 21 AM 9:59

MARIE KRUTZFIELD
RECORDER 7:00 pd

PREPARED BY HALL & HALL ENGINEERS, INC. 209 29TH STREET N.E. CEDAR RAPIDS, IOWA 52402 (319) 362-9548

SECTION CORNER INDEX

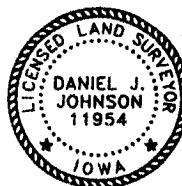


U.S. PUBLIC LAND SURVEY CORNER CERTIFICATE

LAND SURVEY MONUMENTS SITUATED IN SECTION 16,
TOWNSHIP 83 NORTH, RANGE 4 WEST, OF THE FIFTH
PRINCIPAL MERIDIAN, JONES COUNTY IOWA.

REASON FOR PREPARING CERTIFICATE:

- A) THERE IS NO CERTIFICATE FOR THE CORNER ON FILE WITH THE RECORDER OF THE COUNTY IN WHICH THE CORNER IS LOCATED.
- B) CORNER POSITION DIFFERS FROM THAT SHOWN IN THE PUBLIC RECORDS OF THE COUNTY IN WHICH THE CORNER IS LOCATED.
- C) THE CORNER MONUMENT HAS BEEN REPLACED OR MODIFIED.
- D) THE REFERENCE TIES REFERRED TO IN AN EXISTING PUBLIC RECORD ARE INCORRECT OR MISSING.

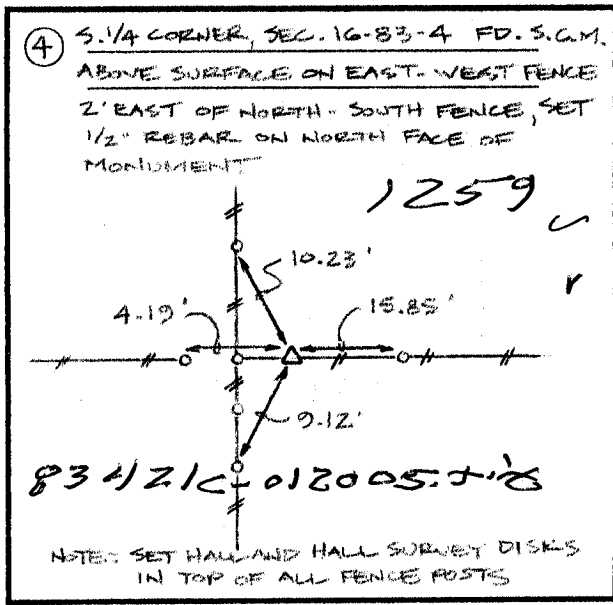
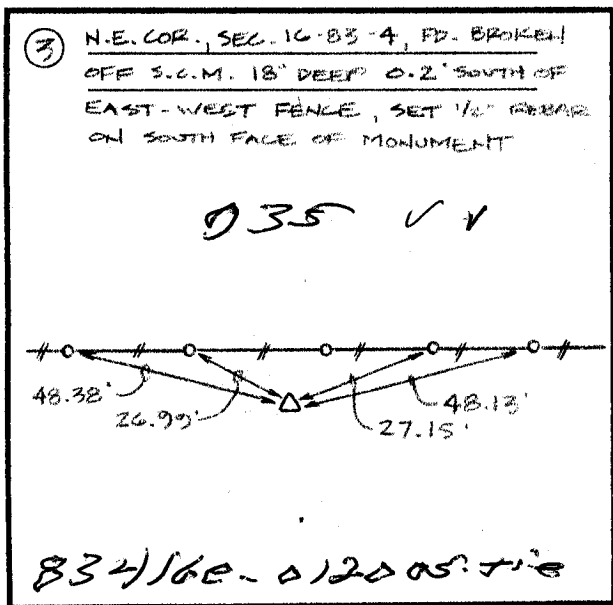
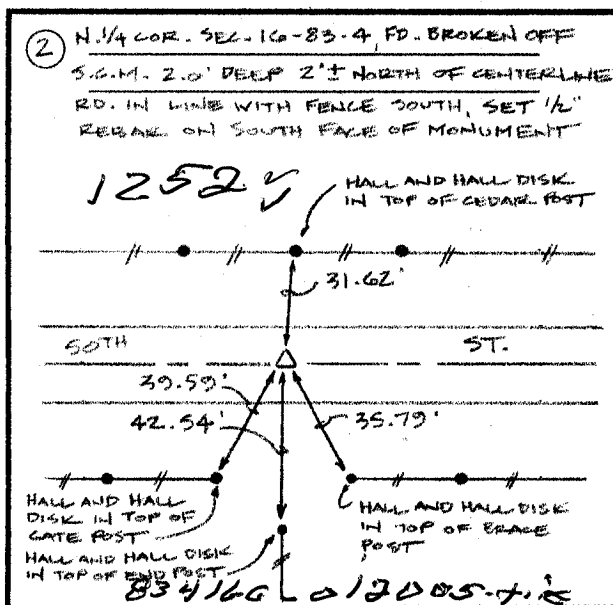
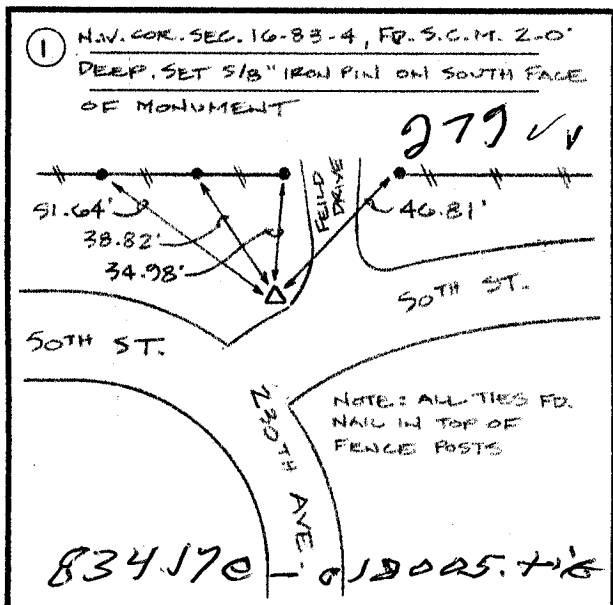


I hereby certify that this land surveying document was prepared and the related survey work was performed by me or under my direct personal supervision and that I am a duly licensed Land Surveyor under the laws of the State of Iowa.

Signed:

Date:

Daniel J. Johnson 1-20-05
Daniel J. Johnson, L.S. 11954
My license renewal date is December 31, 2006



"NIEHAUS"

Drawn by: DLK	Checked by: DJJ	Approved by: DJJ	Field Book No: 07-68	Scale: N/A	Date: 2/20/03	Project No: 7911
------------------	--------------------	---------------------	-------------------------	---------------	------------------	---------------------

THIS IS NOT A CERTIFICATION

JONES COUNTY ENGINEER'S OFFICE, 19501 HWY. 64, ANAMOSA, IOWA, 52205 (319)462-3785

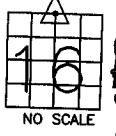
UNITED STATES PUBLIC LAND SURVEY CORNER CERTIFICATE

LAND SURVEY MONUMENTS SITUATED IN SECTION 16, TOWNSHIP 83
NORTH, RANGE 4 WEST OF THE 5TH P.M., JONES COUNTY, IOWA

CORNERS TO BE INDEXED

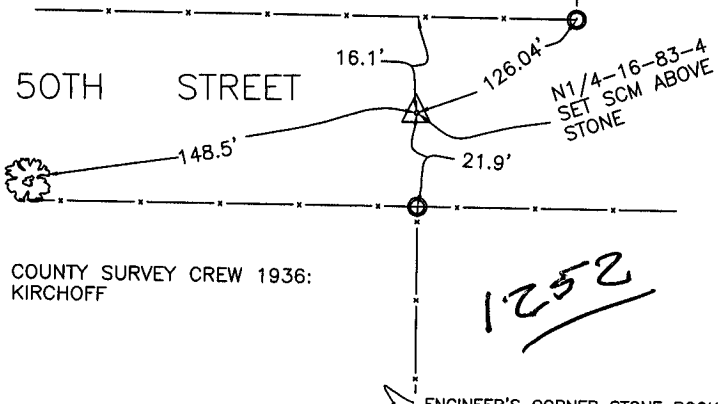
CORNER N-QUARTER	SECTION 16	TOWNSHIP 83N	RANGE 4W
---------------------	---------------	-----------------	-------------

OFFICE FILE NO. 83416c_081103.jpg



NO SCALE

1936 INFORMATION



COUNTY SURVEY CREW 1936:
KIRCHOFF

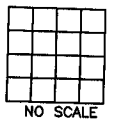
ENGINEER'S CORNER STONE BOOK

PREVIOUSLY RECORDED IN BOOK #6, PAGE 48
MONUMENT DESCRIPTION AND HOW ESTABLISHED FOUND STONE 6"
BELOW SURFACE ON CENTERLINE OF ROAD. LOWERED STONE TO 4.5' BELOW
SURFACE, SET STANDARD CONCRETE MONUMENT DIRECTLY ABOVE WITH TOP 12"
BELOW SURFACE. TIES AS INDICATED. NORTH QUARTER CORNER SECTION 16,
TOWNSHIP 83 NORTH, RANGE 4 WEST OF 5TH PM, JONES COUNTY, IOWA.

CORNERS TO BE INDEXED

CORNER	SECTION	TOWNSHIP	RANGE
--------	---------	----------	-------

OFFICE FILE NO. _____



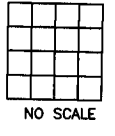
NO SCALE

PREVIOUSLY RECORDED IN BOOK _____, PAGE _____
MONUMENT DESCRIPTION AND HOW ESTABLISHED _____

CORNERS TO BE INDEXED

CORNER	SECTION	TOWNSHIP	RANGE
--------	---------	----------	-------

OFFICE FILE NO. _____



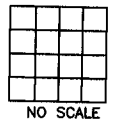
NO SCALE

PREVIOUSLY RECORDED IN BOOK _____, PAGE _____
MONUMENT DESCRIPTION AND HOW ESTABLISHED _____

CORNERS TO BE INDEXED

CORNER	SECTION	TOWNSHIP	RANGE
--------	---------	----------	-------

OFFICE FILE NO. _____



NO SCALE

PREVIOUSLY RECORDED IN BOOK _____, PAGE _____
MONUMENT DESCRIPTION AND HOW ESTABLISHED _____

~~I hereby declare that this plat, survey or report was made by me or under my direct personal supervision and that I am a duly registered Land Surveyor under the laws of the State of Iowa.~~

Signed: _____

SEAL

JONES COUNTY
ENGINEER'S OFFICE

19501 HWY. 64,
ANAMOSA, IOWA,
52205 (319)462-3785