

UNITED STATES PUBLIC LAND SURVEY CORNER CERTIFICATE

LAND SURVEY MONUMENTS SITUATED IN SECTION 17, TOWNSHIP 83 N,
RANGE 4 W, OF THE 5th. PRINCIPAL MERIDIAN, JONES
COUNTY, IOWA.

N NO SCALE

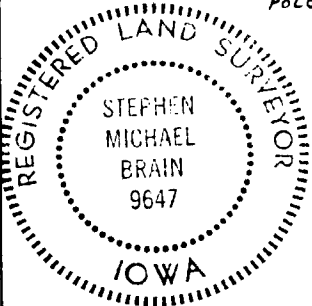
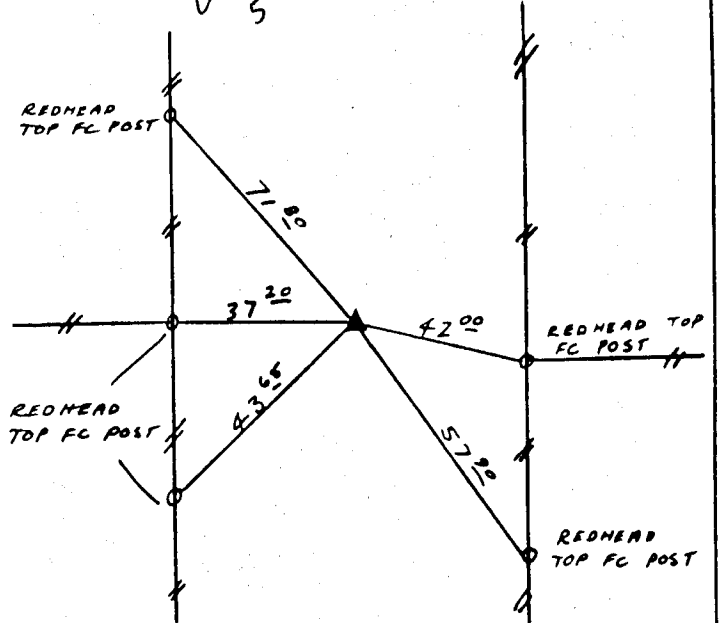
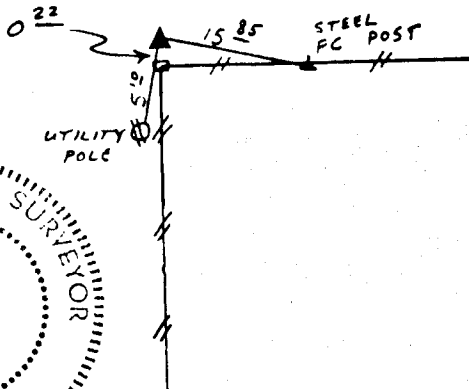
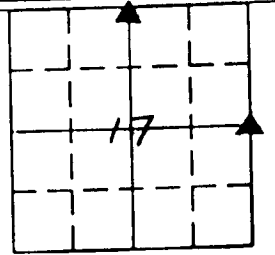
RECOVERY TIE DRAWING

N 1/4 17-83-4W

E 1/4 17-83-4W

*ON
Card
5-16-91*

*ON
Card
5-16-91*



PREVIOUSLY RECORDED IN BOOK _____ PAGE _____
MONUMENT DESCRIPTION AND HOW ESTABLISHED: _____
FOUND S.C.M.

PREVIOUSLY RECORDED IN BOOK _____ PAGE _____
MONUMENT DESCRIPTION AND HOW ESTABLISHED: _____
ESTABLISHED BY TIES

I HEREBY DECLARE THAT THE SURVEY WORK WAS COMPLETED AND THIS CERTIFICATE WAS PREPARED BY ME OR UNDER MY DIRECT PERSONAL SUPERVISION AND THAT I AM A DULY REGISTERED LAND SURVEYOR UNDER THE LAWS OF THE STATE OF IOWA.

Stephen Michael Brain 5/16/91
STEPHEN MICHAEL BRAIN, P.E. & L.S. 9647

List Corners to be Indexed

Corners	Section	Twp	Range
S 1/4	8	83 N	4 W
W 1/4	16	83 N	4 W

PERMENT ENGINEERING, INC.
HIAWATHA, IOWA