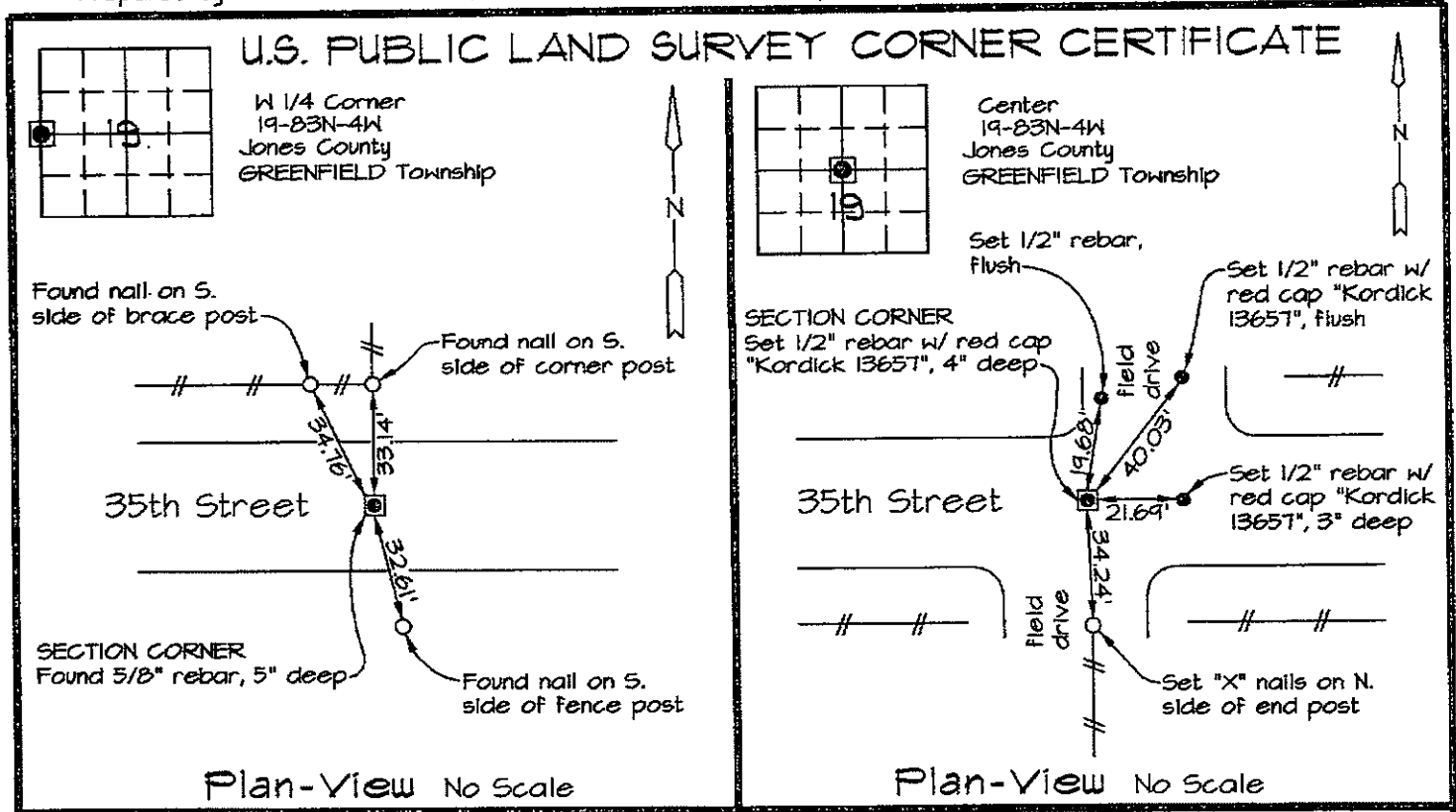


Prepared by: Richard M. Kordick, P.E., L.S., 689 185th Street Tipton, IA 52772 Phone: (563) 432-6424



Reason for corner tie:

- A) There is no certificate for the corner on file with the recorder.
- B) Corner position differs from previously recorded certificate recorded in book , page
- C) Corner monument was replaced or modified.
- D) Reference ties in previously recorded certificate recorded in book , page are incorrect or missing.

Research at the recorder's office, auditor's office, and engineer's office revealed the following:
 An old corner tie in the Jones County Engineer's Office called for a S.C.M. at this corner.

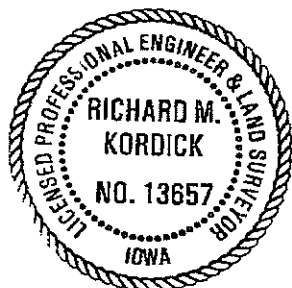
None.

Field search performed was as follows:
 Field search was performed with a metal detector and excavation.

Field search performed was as follows:
 Field search was performed with a metal detector, excavation and probing. Nothing was found.

Monument found or set:
 A 5/8" rebar was found and used as the corner.

Monument found or set:
 A 1/2" rebar w/ red cap "Kordick 13657" was set and used as the corner.



I hereby certify that this land surveying document was prepared and the related survey work was performed by me or under my direct personal supervision and that I am a duly licensed Land Surveyor under the laws of the State of Iowa.

Richard M. Kordick 2/20/2009
 Richard M. Kordick date
 License number 13657
 My license renewal date is December 31, 2009.
 Pages or sheets covered by this seal: 1 of 1

LEGEND:

- Section Corner as noted
- Power Pole
- Section line
- Centerline
- Existing Fence
- Recorded Dist.

Kordick Surveying & Engineering
 689 185th Street
 Tipton, IA 52772
 (563) 432-6424

U.S. Public Land
 Survey Corner Certificate

Project: Plat of Survey
 Parcel No. 2003-25
 Proprietor: Donald J. Erenberger

Field BK 09014
 Date 2-20-09
 Job No. 09014
 Sheet 1 of 1

THIS IS NOT A CERTIFICATION

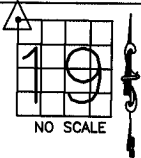
JONES COUNTY ENGINEER'S OFFICE, 19501 HWY. 64, ANAMOSA, IOWA, 52205 (319)462-3785

UNITED STATES PUBLIC LAND SURVEY CORNER CERTIFICATE

LAND SURVEY MONUMENTS SITUATED IN SECTION 19, TOWNSHIP 83
NORTH, RANGE 4 WEST OF THE 5TH P.M., JONES COUNTY, IOWA

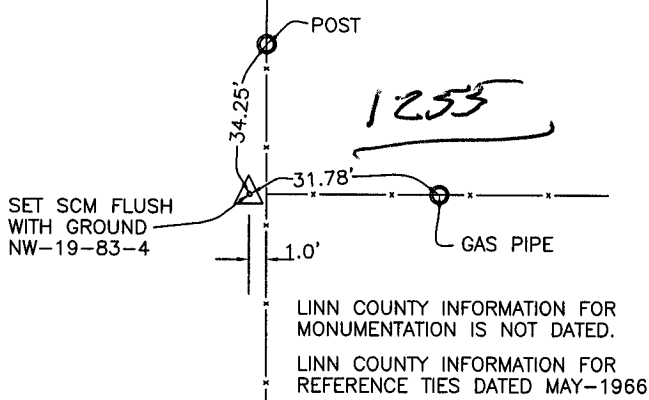
CORNERS TO BE INDEXED

CORNER SECTION TOWNSHIP RANGE
NORTHWEST 19 83N 4W
OFFICE FILE NO.



83419a_081203

LINN COUNTY INFORMATION:



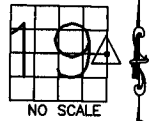
LINN COUNTY INFORMATION FOR MONUMENTATION IS NOT DATED.
LINN COUNTY INFORMATION FOR REFERENCE TIES DATED MAY-1966

LINN COUNTY ENGINEER

PREVIOUSLY RECORDED IN BOOK _____, PAGE _____
MONUMENT DESCRIPTION AND HOW ESTABLISHED FOUND 18"x8"x7" STONE STANDING ON END. ALSO FOUND 10" LONG LIMESTONE ON END AGAINST BASE OF STONE. LOWERED BOTH STONES AND SET STANDARD CONCRETE MONUMENT DIRECTLY ABOVE, TOP FLUSH WITH SURFACE. NORTHWEST CORNER SECTION 19, TOWNSHIP 83 NORTH, RANGE 4 WEST OF 5TH PRINCIPAL MERIDIAN, JONES COUNTY, IOWA.

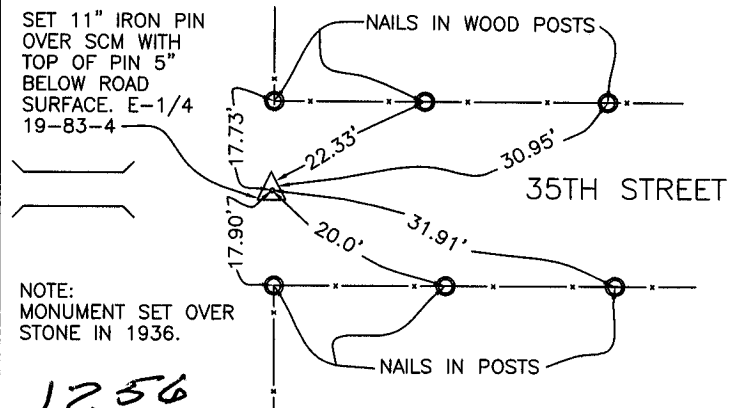
CORNERS TO BE INDEXED

CORNER SECTION TOWNSHIP RANGE
E-QUARTER 19 83N 4W
OFFICE FILE NO.



83419o_081203

1979 INFORMATION: COUNTY SURVEY CREW



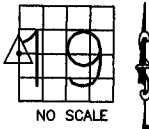
NOTE:
MONUMENT SET OVER STONE IN 1936.

1978-1979 ENGINEER'S

PREVIOUSLY RECORDED IN BOOK MISC., PAGE 44
MONUMENT DESCRIPTION AND HOW ESTABLISHED FOUND STANDARD CONCRETE MONUMENT 16" BELOW ROAD SURFACE. SET 11" IRON PIN DIRECTLY ABOVE MONUMENT WITH TOP OF PIN 5" BELOW ROAD SURFACE. TIES AS INDICATED. EAST QUARTER CORNER SECTION 19, TOWNSHIP 83 NORTH, RANGE 4 WEST OF THE 5TH PRINCIPAL MERIDIAN, JONES COUNTY, IOWA.

CORNERS TO BE INDEXED

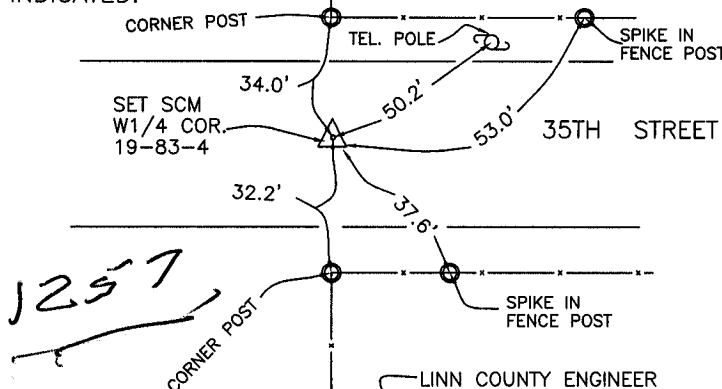
CORNER SECTION TOWNSHIP RANGE
W-QUARTER 19 83N 4W
OFFICE FILE NO.



83419k_081203

LINN COUNTY ENGINEER INFORMATION, NO DATE INDICATED.

NOTE:
PER LINN COUNTY, IRON PIN SET ABOVE MONUMENT IN 1952

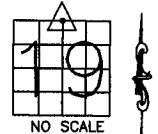


LINN COUNTY ENGINEER

PREVIOUSLY RECORDED IN BOOK _____, PAGE _____
MONUMENT DESCRIPTION AND HOW ESTABLISHED FOUND STONE IN CENTERLINE OF STONE. LOWERED STONE AND SET STANDARD CONCRETE MONUMENT DIRECTLY ABOVE STONE WITH TOP OF MONUMENT 14" BELOW SURFACE OF ROAD. WEST QUARTER CORNER OF SECTION 19, TOWNSHIP 83 NORTH, RANGE 4 WEST OF THE 5TH PRINCIPAL MERIDIAN, JONES COUNTY, IOWA.

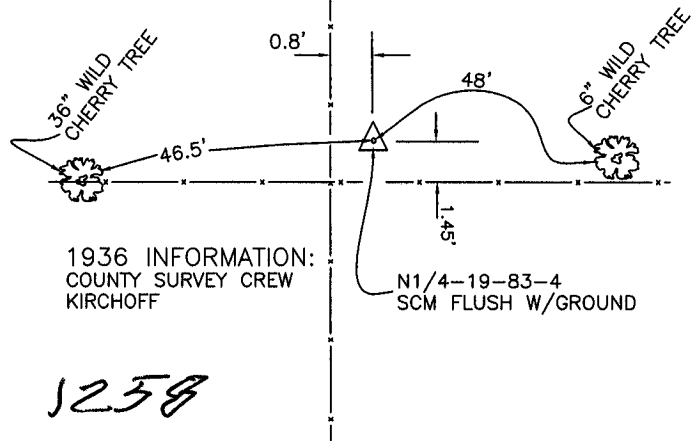
CORNERS TO BE INDEXED

CORNER SECTION TOWNSHIP RANGE
N-QUARTER 19 83N 4W
OFFICE FILE NO.



83419c_081203

1936 INFORMATION:
COUNTY SURVEY CREW
KIRCHOFF



COUNTY ENGINEER CORNER STONE

PREVIOUSLY RECORDED IN BOOK #6, PAGE 72
MONUMENT DESCRIPTION AND HOW ESTABLISHED FOUND 9"x6"x4" LIMESTONE STANDING ON END. LOWERED STONE TO 4' BELOW, SET STANDARD CONCRETE MONUMENT DIRECTLY ABOVE WITH TOP OF MONUMENT FLUSH WITH SURFACE. NORTH QUARTER CORNER SECTION 19, TOWNSHIP 83 NORTH, RANGE 4 WEST OF THE 5TH PRINCIPAL MERIDIAN, JONES COUNTY, IOWA.

~~I hereby declare that this plat, survey or report was made by me or under my direct personal supervision and that I am a duly registered Land Surveyor under the laws of the State of Iowa.~~

Signed:

SEAL

JONES COUNTY
ENGINEER'S OFFICE

19501 HWY. 64,
ANAMOSA, IOWA,
52205 (319)462-3785

4