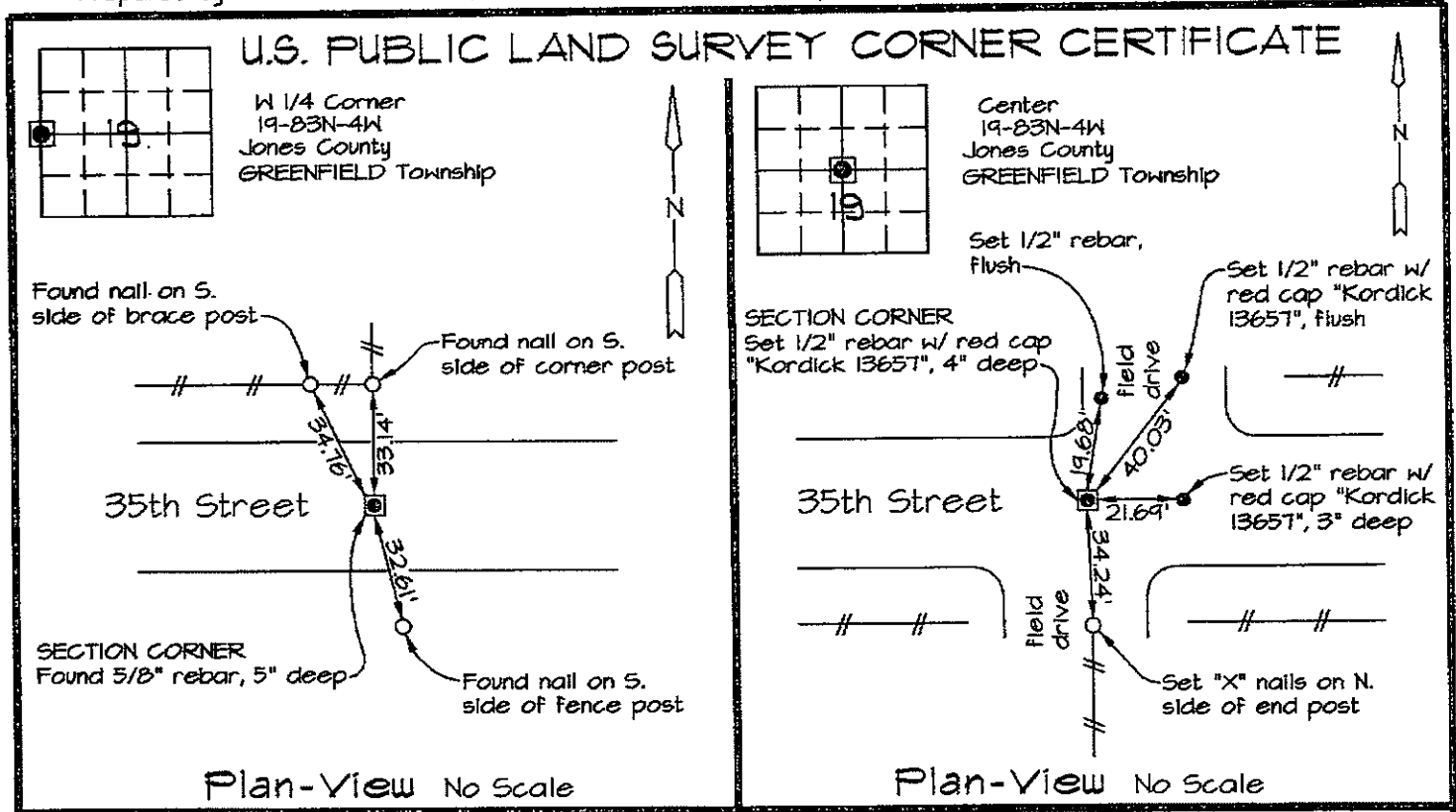


Prepared by: Richard M. Kordick, P.E., L.S., 689 185th Street Tipton, IA 52772 Phone: (563) 432-6424



Reason for corner tie:

A) There is no certificate for the corner on file with the recorder.

B) Corner position differs from previously recorded certificate recorded in book , page

C) Corner monument was replaced or modified.

D) Reference ties in previously recorded certificate recorded in book , page are incorrect or missing.

Research at the recorder's office, auditor's office, and engineer's office revealed the following:
 An old corner tie in the Jones County Engineer's Office called for a S.C.M. at this corner.

None.

Field search performed was as follows:
 Field search was performed with a metal detector and excavation.

Field search performed was as follows:
 Field search was performed with a metal detector, excavation and probing. Nothing was found.

Monument found or set:
 A 5/8" rebar was found and used as the corner.

Monument found or set:
 A 1/2" rebar w/ red cap "Kordick 13657" was set and used as the corner.

I hereby certify that this land surveying document was prepared and the related survey work was performed by me or under my direct personal supervision and that I am a duly licensed Land Surveyor under the laws of the State of Iowa.

Richard M. Kordick 2/20/2009
 Richard M. Kordick date
 License number 13657
 My license renewal date is December 31, 2009.
 Pages or sheets covered by this seal: 1 of 1

LEGEND:

- Section Corner as noted
- Power Pole
- Section line
- Centerline
- Existing Fence
- Recorded Dist.

Kordick Surveying & Engineering 689 185th Street Tipton, IA 52772 (563) 432-6424	U.S. Public Land Survey Corner Certificate	Field BK 09014 Date 2-20-09
	Project: Plat of Survey Parcel No. 2003-25 Proprietor: Donald J. Erenberger	Job No. 09014 Sheet 1 of 1

Instrument #: 2014-3250
 12/15/2014 10:54:47 AM Total Pages: 1
 ZSC SECTION CORNER CERTIFICATE
 Recording Fee: \$7.00 Transfer Tax: \$0
 Marie Krutzfield, Recorder, Jones County Iowa



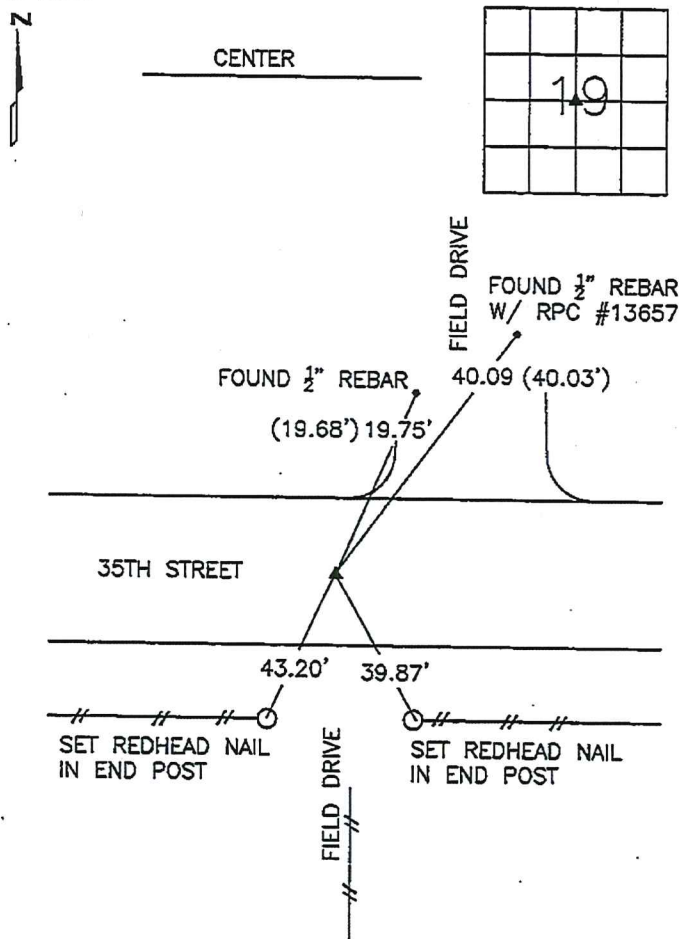
PREPARED BY

STEPHEN MICHAEL BRAIN, BRAIN ENGINEERING, INC., 1540 MIDLAND COURT NE, CEDAR RAPIDS, IOWA PH. (319) 294-9424

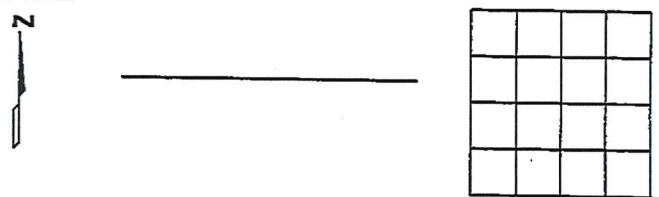
UNITED STATES PUBLIC LAND SURVEY CORNER CERTIFICATE

LAND SURVEY MONUMENTS SITUATED IN SECTION 19, TOWNSHIP 83 NORTH
 RANGE 4 WEST OF THE 5TH P.M., JONES COUNTY, IOWA.

NO SCALE



NO SCALE



PREVIOUSLY RECORDED IN FEEBOOK 2009 0597

MONUMENT DESCRIPTION AND HOW ESTABLISHED _____
 SET 1/2" REBAR WITH YELLOW PLASTIC CAP #9647 4" DEEP
 IN THE CENTERLINE OF 35TH STREET. SET FROM REMAINING
 TIES AND FROM PLAT OF SURVEY #2009-25

PREVIOUSLY RECORDED IN BOOK _____ PAGE _____

MONUMENT DESCRIPTION AND HOW ESTABLISHED _____



I hereby certify that this land surveying document and the related survey work was performed by me or under my direct personal supervision, and that I am a duly licensed Land Surveyor under the laws of the State of Iowa.
 Signed _____ Date 12/12/14

Stephen Michael Brain, L.S.
 My License Renewal Date Is December 31, 2014
 License Number 9647
 Pages or sheets covered by this seal: 1/1

- A. THERE IS NO CERTIFICATE FOR THE CORNER ON FILE WITH THE RECORDER OF THE COUNTY IN WHICH THE CORNER IS LOCATED
- B. THE SURVEYOR IN RESPONSIBLE CHARGE OF THE LAND SURVEYING ACCEPTS A CORNER POSITION WHICH DIFFERS FROM THAT SHOWN IN THE PUBLIC RECORDS OF THE COUNTY IN WHICH THE CORNER IS LOCATED.
- C. THE CORNER MONUMENT IS REPLACED OR MODIFIED IN ANY WAY.
- D. THE REFERENCE TIES REFERRED TO IN AN EXISTING PUBLIC RECORD ARE NOT CORRECT.

CORNERS TO BE INDEXED			
CORNER	SECTION	TOWNSHIP	RANGE
CENTER	19	T83N	R4 W

BRAIN ENGINEERING, INC.

1540 MIDLAND COURT NE
 CEDAR RAPIDS, IOWA 52402 284914-70
 (319) 294-8424

PREPARED BY
 STEPHEN MICHAEL BRAIN, BRAIN ENGINEERING, INC., 1540 MIDLAND COURT NE, CEDAR RAPIDS, IOWA PH. (319) 294-9424

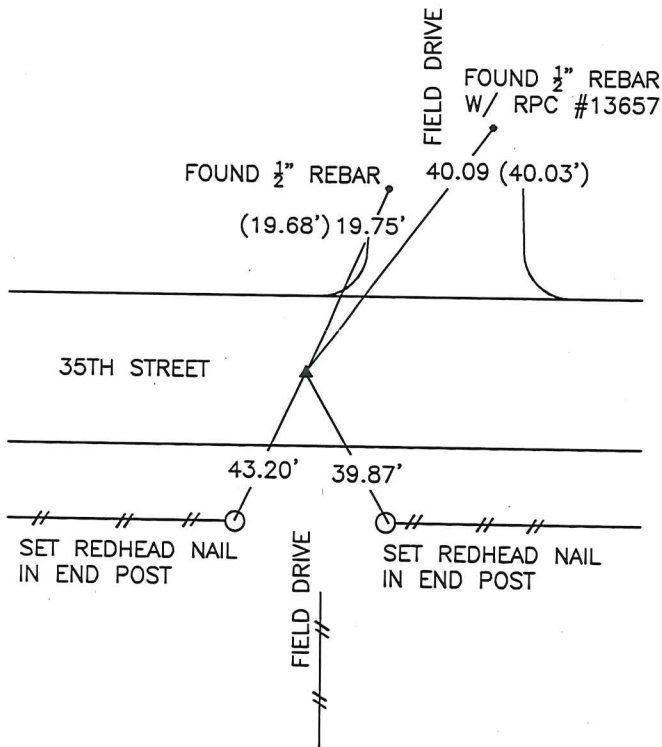
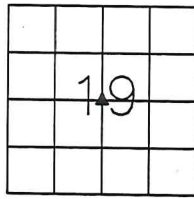
UNITED STATES PUBLIC LAND SURVEY CORNER CERTIFICATE

LAND SURVEY MONUMENTS SITUATED IN SECTION 19, TOWNSHIP 83 NORTH
 RANGE 4 WEST OF THE 5TH P.M., JONES COUNTY, IOWA.

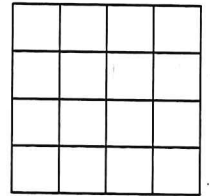
NO SCALE



CENTER



NO SCALE



PREVIOUSLY RECORDED IN FEEBOOK 2009 0597

MONUMENT DESCRIPTION AND HOW ESTABLISHED
 SET 1/2" REBAR WITH YELLOW PLASTIC CAP #9647 4" DEEP
 IN THE CENTERLINE OF 35TH STREET. SET FROM REMAINING
 TIES AND FROM PLAT OF SURVEY #2009-25

PREVIOUSLY RECORDED IN BOOK _____ PAGE _____

MONUMENT DESCRIPTION AND HOW ESTABLISHED _____



I hereby certify that this land surveying document
 and the related survey work was performed by me
 or under my direct personal supervision and that
 I am a duly licensed Land Surveyor under the laws
 of the State of Iowa.

Signed *Stephen Michael Brain* Date 12/12/14

Stephen Michael Brain, L.S.
 My License Renewal Date is December 31, 2014
 License Number 9647
 Pages or sheets covered by this seal: 1/1

- A. THERE IS NO CERTIFICATE FOR THE CORNER ON FILE WITH THE RECORDER OF THE COUNTY IN WHICH THE CORNER IS LOCATED
- B. THE SURVEYOR IN RESPONSIBLE CHARGE OF THE LAND SURVEYING ACCEPTS A CORNER POSITION WHICH DIFFERS FROM THAT SHOWN IN THE PUBLIC RECORDS OF THE COUNTY IN WHICH THE CORNER IS LOCATED.
- C. THE CORNER MONUMENT IS REPLACED OR MODIFIED IN ANY WAY.
- D. THE REFERENCE TIES REFERRED TO IN AN EXISTING PUBLIC RECORD ARE NOT CORRECT.

CORNERS TO BE INDEXED			
CORNER	SECTION	TOWNSHIP	RANGE
CENTER	19	T83N	R4 W

BRAIN ENGINEERING, INC.

1540 MIDLAND COURT NE
 CEDAR RAPIDS, IOWA 52402 284914-70
 (319) 294-9424