

THIS IS NOT A CERTIFICATION

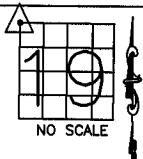
JONES COUNTY ENGINEER'S OFFICE, 19501 HWY. 64, ANAMOSA, IOWA, 52205 (319)462-3785

UNITED STATES PUBLIC LAND SURVEY CORNER CERTIFICATE

LAND SURVEY MONUMENTS SITUATED IN SECTION 19, TOWNSHIP 83
NORTH, RANGE 4 WEST OF THE 5TH P.M., JONES COUNTY, IOWA

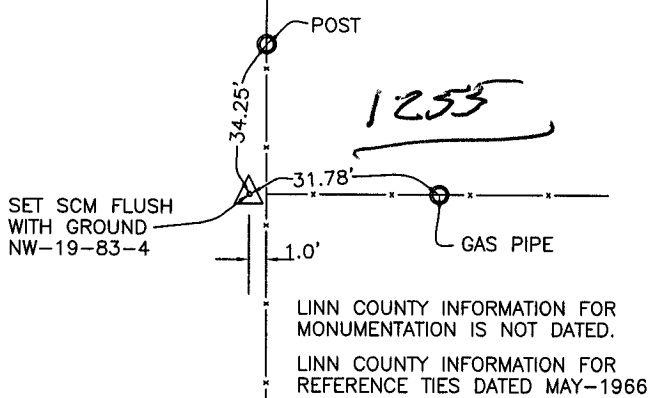
CORNERS TO BE INDEXED

CORNER SECTION TOWNSHIP RANGE
NORTHWEST 19 83N 4W
OFFICE FILE NO.



83419a_081203

LINN COUNTY INFORMATION:



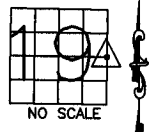
SET SCM FLUSH WITH GROUND NW-19-83-4
GAS PIPE
LINN COUNTY INFORMATION FOR MONUMENTATION IS NOT DATED.
LINN COUNTY INFORMATION FOR REFERENCE TIES DATED MAY-1966

LINN COUNTY ENGINEER

PREVIOUSLY RECORDED IN BOOK _____, PAGE _____
MONUMENT DESCRIPTION AND HOW ESTABLISHED FOUND 18"x8"x7" STONE STANDING ON END. ALSO FOUND 10" LONG LIMESTONE ON END AGAINST BASE OF STONE. LOWERED BOTH STONES AND SET STANDARD CONCRETE MONUMENT DIRECTLY ABOVE, TOP FLUSH WITH SURFACE. NORTHWEST CORNER SECTION 19, TOWNSHIP 83 NORTH, RANGE 4 WEST OF 5TH PRINCIPAL MERIDIAN, JONES COUNTY, IOWA.

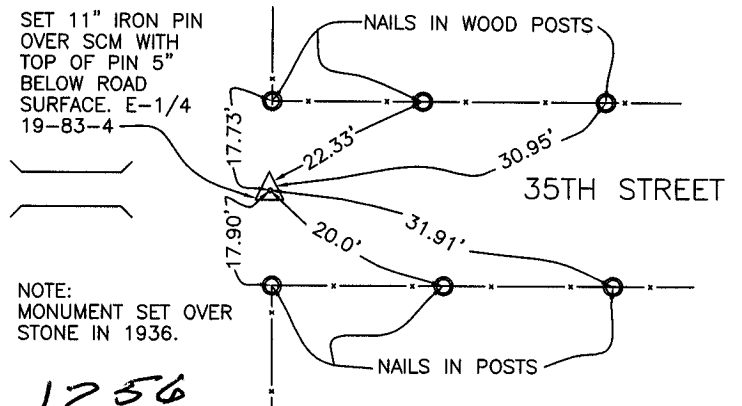
CORNERS TO BE INDEXED

CORNER SECTION TOWNSHIP RANGE
E-QUARTER 19 83N 4W
OFFICE FILE NO.



83419o_081203

1979 INFORMATION: COUNTY SURVEY CREW



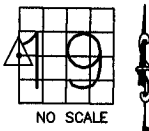
SET 11" IRON PIN OVER SCM WITH TOP OF PIN 5" BELOW ROAD SURFACE. E-1/4 19-83-4
NOTE: MONUMENT SET OVER STONE IN 1936.

1978-1979 ENGINEER'S

PREVIOUSLY RECORDED IN BOOK MISC., PAGE 44
MONUMENT DESCRIPTION AND HOW ESTABLISHED FOUND STANDARD CONCRETE MONUMENT 16" BELOW ROAD SURFACE. SET 11" IRON PIN DIRECTLY ABOVE MONUMENT WITH TOP OF PIN 5" BELOW ROAD SURFACE. TIES AS INDICATED. EAST QUARTER CORNER SECTION 19, TOWNSHIP 83 NORTH, RANGE 4 WEST OF THE 5TH PRINCIPAL MERIDIAN, JONES COUNTY, IOWA.

CORNERS TO BE INDEXED

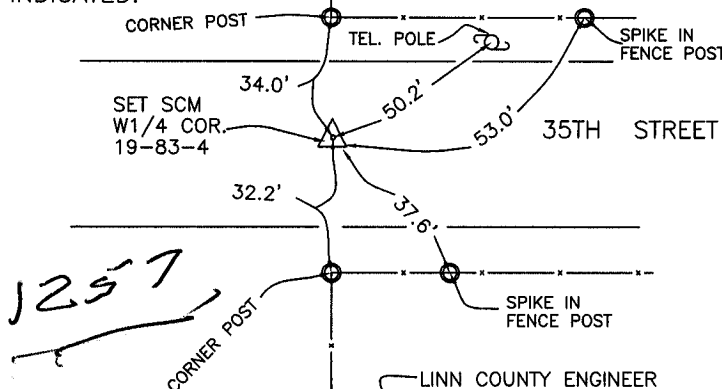
CORNER SECTION TOWNSHIP RANGE
W-QUARTER 19 83N 4W
OFFICE FILE NO.



83419k_081203

LINN COUNTY ENGINEER INFORMATION, NO DATE INDICATED.

NOTE: PER LINN COUNTY, IRON PIN SET ABOVE MONUMENT IN 1952

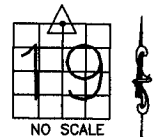


LINN COUNTY ENGINEER

PREVIOUSLY RECORDED IN BOOK _____, PAGE _____
MONUMENT DESCRIPTION AND HOW ESTABLISHED FOUND STONE IN CENTERLINE OF STONE. LOWERED STONE AND SET STANDARD CONCRETE MONUMENT DIRECTLY ABOVE STONE WITH TOP OF MONUMENT 14" BELOW SURFACE OF ROAD. WEST QUARTER CORNER OF SECTION 19, TOWNSHIP 83 NORTH, RANGE 4 WEST OF THE 5TH PRINCIPAL MERIDIAN, JONES COUNTY, IOWA.

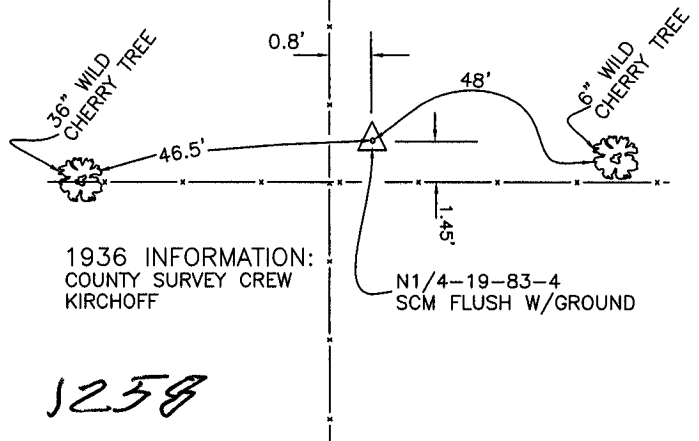
CORNERS TO BE INDEXED

CORNER SECTION TOWNSHIP RANGE
N-QUARTER 19 83N 4W
OFFICE FILE NO.



83419c_081203

1936 INFORMATION: COUNTY SURVEY CREW KIRCHOFF



COUNTY ENGINEER CORNER STONE

PREVIOUSLY RECORDED IN BOOK #6, PAGE 72
MONUMENT DESCRIPTION AND HOW ESTABLISHED FOUND 9"x6"x4" LIMESTONE STANDING ON END. LOWERED STONE TO 4' BELOW, SET STANDARD CONCRETE MONUMENT DIRECTLY ABOVE WITH TOP OF MONUMENT FLUSH WITH SURFACE. NORTH QUARTER CORNER SECTION 19, TOWNSHIP 83 NORTH, RANGE 4 WEST OF THE 5TH PRINCIPAL MERIDIAN, JONES COUNTY, IOWA.

~~I hereby declare that this plat, survey or report was made by me or under my direct personal supervision and that I am a duly registered Land Surveyor under the laws of the State of Iowa.~~

Signed:

SEAL

JONES COUNTY
ENGINEER'S OFFICE

19501 HWY. 64,
ANAMOSA, IOWA,
52205 (319)462-3785

4