

Jones County
 Marie Krutzfield, Recorder
Fee Book 2010 1336

05/24/2010 @0203PM
 ZSC SEC COR CERT # Pages: 1
 Book: Page: Total Fees: \$9.00

PREPARED BY: SCOTT SURVEY, INC. P.O. BOX 315 CENTER POINT IOWA 52213 319-540-5263

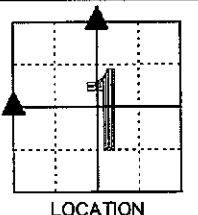
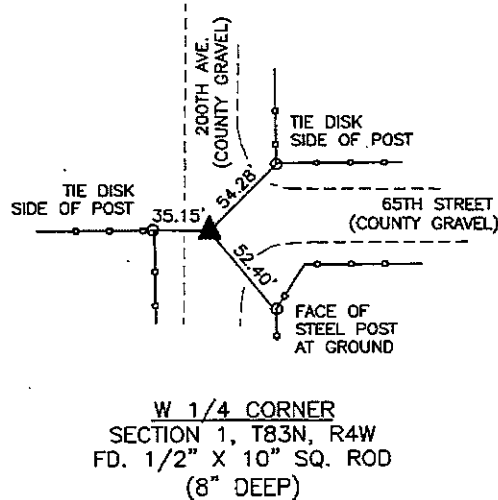
U.S. PUBLIC LAND SURVEY CORNER CERTIFICATE

FOR LAND SURVEY MONUMENTS SITUATED IN SECTION 1, TOWNSHIP 83 NORTH, RANGE 4 WEST, OF THE FIFTH PRINCIPAL MERIDIAN, JONES COUNTY, IOWA

REASON FOR PREPARING CERTIFICATE:

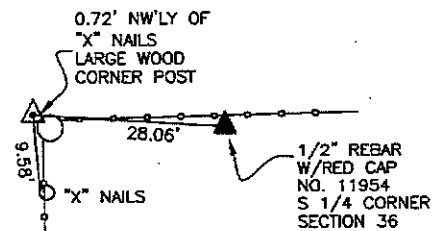
- A) THERE IS NO CERTIFICATE FOR THE CORNER ON FILE WITH THE RECORDER (W 1/4 CORNER).
- B) CORNER TIES DIFFER FROM PREVIOUSLY RECORDED CERTIFICATE (N 1/4 CORNER).

RECOVERY TIE DRAWING



LOCATION

NOT TO SCALE



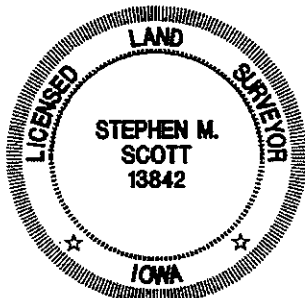
N 1/4 CORNER
 SECTION 1, T83N, R4W
 SET 1/2" REBAR
 W/RED CAP NO. 13842
 (18" DEEP)

MONUMENT DESCRIPTION AND REMARKS :

FOUND MONUMENT IN LINE WITH FENCE WEST AND AT CENTER OF ROAD NORTH-SOUTH. FITS CLOSELY WITH PRORATED DISTANCES FROM GLO NOTES ON FRACTIONAL SECTION. PROBED 24" BELOW PIN - NO STONE. (SEE PLAT OF SURVEY PARCEL 2010-42 FOR SECTION BREAKDOWN DISTANCES.)

MONUMENT DESCRIPTION AND REMARKS :

SET MONUMENT BASED ON TIES PREVIOUSLY RECORDED IN BOOK 2003, PAGE 1069 IN THE OFFICE OF THE RECORDER, JONES COUNTY, IOWA. (SCM LAYING ON SIDE NEXT TO FENCE CORNER - COMPLETELY INTACT.)



I hereby certify that this land surveying document was prepared and the related survey work was performed by me or under my direct personal supervision and that I am a duly licensed Land Surveyor under the laws of the State of Iowa.

Stephen M. Scott
 _____, 2010
 STEPHEN M. SCOTT, L.S. Iowa Lic. No. 13842

My license renewal date is December 31, 2010.

- GOVERNMENT CORNER
- 1/2" TIE PIN SET
- CENTERLINE
- - - EXISTING FENCE LINE
- - - R.O.W. LINE

U.S. PUBLIC LAND SURVEY CORNER CERTIFICATE

SECTION 1, T83N, R4W
 W 1/4 CORNER
 N 1/4 CORNER

PROJECT NO.
 1015501

2003 1069

FILED
RECORDERS OFFICE
JONES COUNTY IOWA

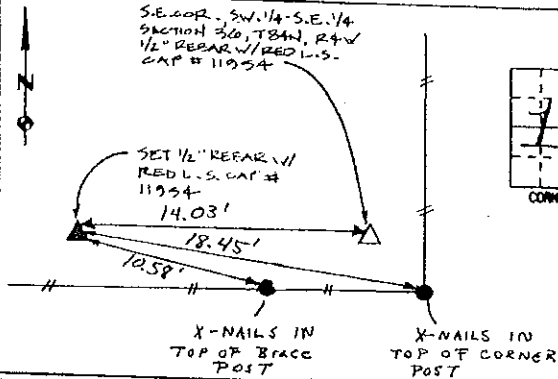
03 MAR 13 PM 1:13

MARIE KRUTZFIELD
RECORDER 6.00Pd

PREPARED BY HALL & HALL ENGINEERS, INC. 209 29TH STREET N.E. CEDAR RAPIDS, IOWA 52402 (319) 362-9548

LAND SURVEY MONUMENTS SITUATED IN SECTION 1, TOWNSHIP 83 NORTH,
RANGE 4 WEST, OF THE FIFTH PRINCIPAL MERIDIAN, JONES COUNTY IOWA.

RECOVERY TIE DRAWING

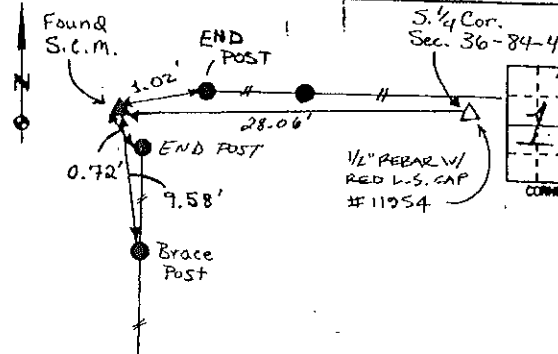
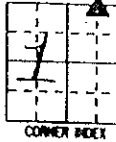


MONUMENT DESCRIPTION AND REMARKS:

N.E. Corner - NW 1/4 - NE 1/4 Sec. 1-83-4

REASON FOR PREPARING CERTIFICATE: A, B, C OR D
PREVIOUS BOOK _____ PAGE _____

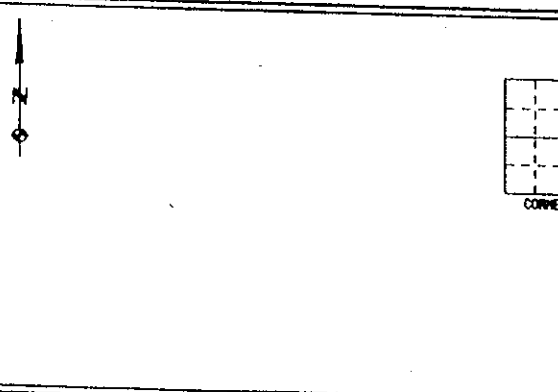
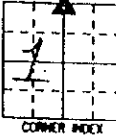
Set 1/2" Rebar w/ Red L.S. CAP #11954 FLUSH W/SURFACE 3' NORTH OF FENCE WEST AND 1P' WEST OF FENCE NORTH.



N. 1/4 Corner Section 1-83-4

REASON FOR PREPARING CERTIFICATE: A, B, C OR D
PREVIOUS BOOK _____ PAGE _____

FOUND S.C.M. AT CORNER OF FENCES EAST AND SOUTH 12" ABOVE GROUND



REASON FOR PREPARING CERTIFICATE: A, B, C OR D
PREVIOUS BOOK _____ PAGE _____

I hereby certify that this land surveying document was prepared and the related survey work was performed by me or under my direct personal supervision and that I am a duly licensed Land Surveyor under the laws of the State of Iowa.

Signed: *Daniel J. Johnson* Date: 3-4-03
Daniel J. Johnson, L.S. 11934
My license renewal date is December 31, 2004

Pages or sheets covered by this seal: (Entire submission unless specified here)



- REASON FOR PREPARING CERTIFICATE:
- A) THERE IS NO CERTIFICATE FOR THE CORNER ON FILE WITH THE RECORDER OF THE COUNTY IN WHICH THE CORNER IS LOCATED.
 - B) CORNER POSITION DIFFERS FROM THAT SHOWN IN THE PUBLIC RECORDS OF THE COUNTY IN WHICH THE CORNER IS LOCATED.
 - C) THE CORNER MONUMENT HAS BEEN REPLACED OR MODIFIED.
 - D) THE REFERENCE TIES REFERRED TO IN AN EXISTING PUBLIC RECORD ARE INCORRECT OR MISSING

SHEET NO: U.S. PUBLIC LAND SURVEY CORNER CERTIFICATE

PROJECT NO: Jones County (Morley)

HALL AND HALL ENGINEERS, INC.
209 29TH STREET N.E.
CEDAR RAPIDS, IOWA 52402
(319) 362-9548

SCALE: NONE

NO. County 3

NO. 6125

DATE: 5/4/00

2002 3025

FILED
RECORDERS OFFICE
JONES COUNTY IOWA

83401d-081602

02 AUG 16 PM 12:51

83401c-081602

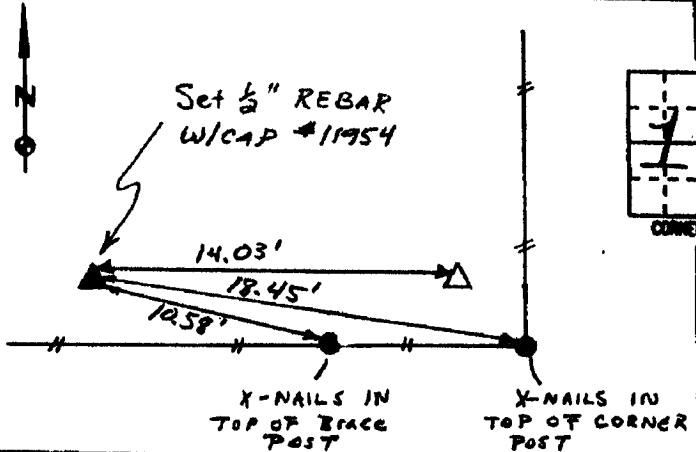
MARIE KRUTZFIELD
RECORDER 6:00pd

PREPARED BY HALL & HALL ENGINEERS, INC. 209 29TH STREET N.E. CEDAR RAPIDS, IOWA 52402 (319) 362-9548

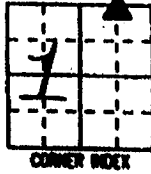
LAND SURVEY MONUMENTS SITUATED IN SECTION 1, TOWNSHIP 83 NORTH,
RANGE 4 WEST, OF THE FIFTH PRINCIPAL MERIDIAN, JONES COUNTY IOWA.

RECOVERY TIE DRAWING

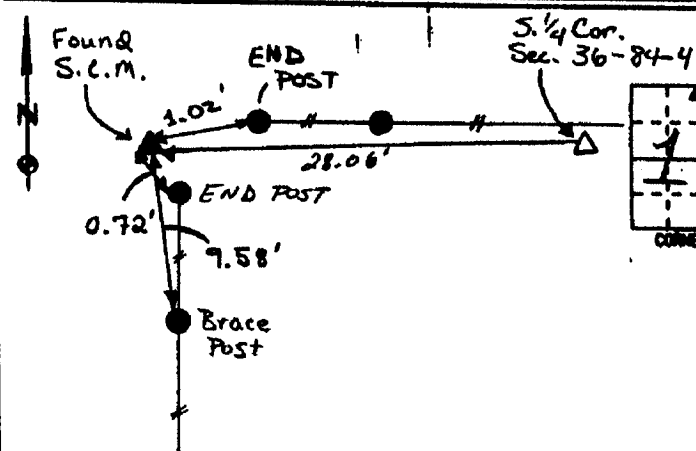
MONUMENT DESCRIPTION AND REMARKS:



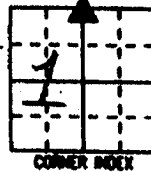
NE 1/4 Corner - NW 1/4 - NE 1/4 Sec. 1-83-4



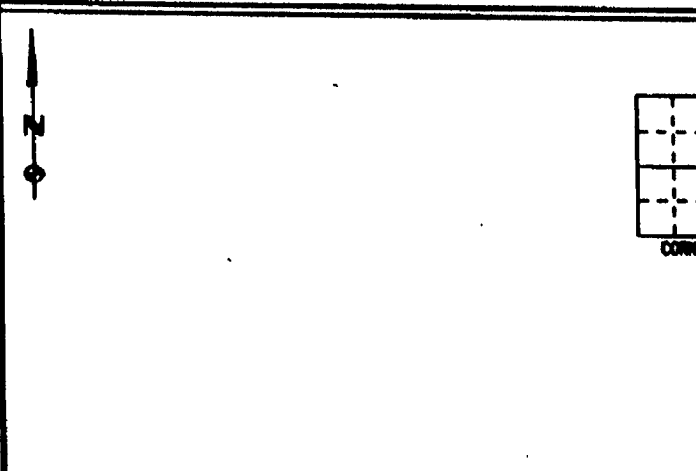
REASON FOR PREPARING CERTIFICATE: A B. C OR D
PREVIOUS BOOK _____ PAGE _____
Set 1/2\" Rebar w/ Red L.S. CAP
#11954 FLUSH W/SURFACE
3' NORTH OF FENCE WEST
AND 12' WEST OF FENCE NORTH.



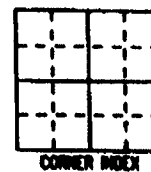
N 1/4 Corner Section 1-83-4



REASON FOR PREPARING CERTIFICATE: A B. C OR D
PREVIOUS BOOK _____ PAGE _____
Set 1/2\" Rebar w/ Red L.S. CAP
#11954. FOUND S.C.M. IN
CORNER POST OF FENCES
SOUTH AND EAST 12\" ABOVE
GROUND.



REASON FOR PREPARING CERTIFICATE: A, B, C OR D
PREVIOUS BOOK _____ PAGE _____



I hereby certify that this land surveying document was prepared and the related survey work was performed by me or under my direct personal supervision and that I am a duly licensed Land Surveyor under the laws of the State of Iowa.

Signed: [Signature] Date: 8-16-02

Daniel J. Johnson, L.S. 11954
My license renewal date is December 31, 2002

Pages or sheets covered by this seal:
(Enter submission unless specified here) 1 of 1

REASON FOR PREPARING CERTIFICATE:

- A) THERE IS NO CERTIFICATE FOR THE CORNER ON FILE WITH THE RECORDER OF THE COUNTY IN WHICH THE CORNER IS LOCATED.
- B) CORNER POSITION DIFFERS FROM THAT SHOWN IN THE PUBLIC RECORDS OF THE COUNTY IN WHICH THE CORNER IS LOCATED.
- C) THE CORNER MONUMENT HAS BEEN REPLACED OR MODIFIED.
- D) THE REFERENCE TIES REFERRED TO IN AN EXISTING PUBLIC RECORD ARE INCORRECT OR MISSING.

SHEET NO: U.S. PUBLIC LAND SURVEY CORNER CERTIFICATE

PROJECT NO: JONES County (Morley)



HALL AND HALL ENGINEERS, INC.
209 29TH STREET N.E.
CEDAR RAPIDS, IOWA 52402
(319) 362-9548

DATE: <u>5/4/00</u>	SCALE: NONE	TWP: <u>County 3</u>	RANGE: <u>6125</u>
---------------------	-------------	----------------------	--------------------

2002 3018

FILED
RECORDERS OFFICE
JONES COUNTY IOWA

84436W-081602

02 AUG 16 PM 12:44

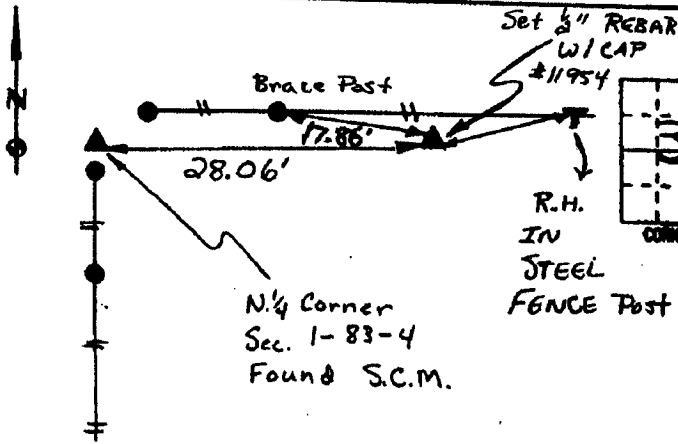
MARIE KRUTZFIELD
RECORDER 6.00 pd

PREPARED BY HALL & HALL ENGINEERS, INC. 209 29TH STREET N.E. CEDAR RAPIDS, IOWA 52402 (319) 362-9548

LAND SURVEY MONUMENTS SITUATED IN SECTION 36, TOWNSHIP 84 NORTH,
RANGE 4 WEST, OF THE FIFTH PRINCIPAL MERIDIAN, JONES COUNTY IOWA.

RECOVERY TIE DRAWING

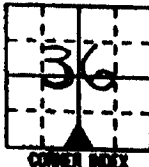
MONUMENT DESCRIPTION AND REMARKS:



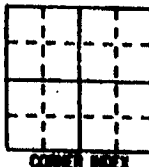
S. 1/4 Corner Section 36-84-4

REASON FOR PREPARING CERTIFICATE: (A) B, C OR D
PREVIOUS BOOK _____, PAGE _____

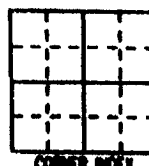
Set 1/2" REBAR W/ RED L.S.
CAP # 11954. 1 1/2' South of
FENCE EAST AND 28' EAST OF
FENCE SOUTH



REASON FOR PREPARING CERTIFICATE: A, B, C OR D
PREVIOUS BOOK _____, PAGE _____



REASON FOR PREPARING CERTIFICATE: A, B, C OR D
PREVIOUS BOOK _____, PAGE _____



I hereby certify that this land surveying document was prepared and the related survey work was performed by me or under my direct personal supervision and that I am a duly Licensed Land Surveyor under the laws of the State of Iowa.

Signed: [Signature] Date: 8-16-02
Daniel J. Johnson, L.S. 1984
My license renewed date is December 31, 2002

Pages or sheets covered by this work:
(Entire submission unless specified here) 12/1

REASON FOR PREPARING CERTIFICATE:

- A) THERE IS NO CERTIFICATE FOR THE CORNER ON FILE WITH THE RECORDER OF THE COUNTY IN WHICH THE CORNER IS LOCATED.
- B) CORNER POSITION DIFFERS FROM THAT SHOWN IN THE PUBLIC RECORDS OF THE COUNTY IN WHICH THE CORNER IS LOCATED.
- C) THE CORNER MONUMENT HAS BEEN REPLACED OR MODIFIED.
- D) THE REFERENCE TIES REFERRED TO IN AN EXISTING PUBLIC RECORD ARE INCORRECT OR MISSING.

SHEET NO. _____ U.S. PUBLIC LAND SURVEY CORNER CERTIFICATE

PROJECT NO. JONES County (Morley)

HALL AND HALL ENGINEERS, INC.
209 29TH STREET N.E.
CEDAR RAPIDS, IOWA 52402
(319) 362-9548

DATE: 8-16-02 SCALE: NONE COUNTY: 3 FILE NO: 6125

2003 1062
 FILED
 RECORDERS OFFICE
 JONES COUNTY IOWA

03 MAR 13 PM 1:06

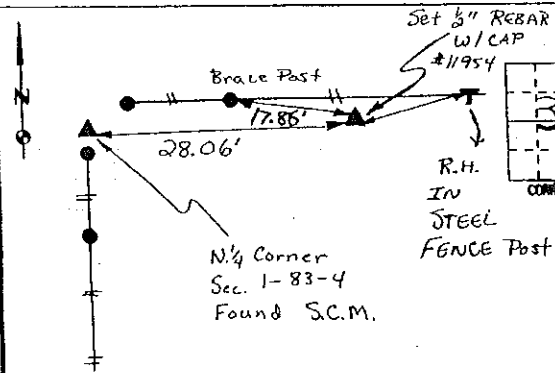
MARIE KRUTZFIELD
 RECORDER *6.00 PM*

PREPARED BY HALL & HALL ENGINEERS, INC. 209 29TH STREET N.E. CEDAR RAPIDS, IOWA 52402 (319) 362-9548

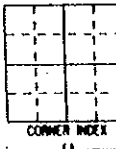
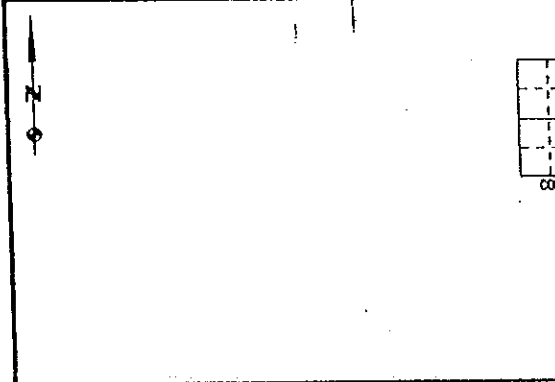
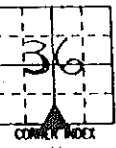
LAND SURVEY MONUMENTS SITUATED IN SECTION 36, TOWNSHIP 84 NORTH,
 RANGE 4 WEST, OF THE FIFTH PRINCIPAL MERIDIAN, JONES COUNTY IOWA.

RECOVERY TIE DRAWING

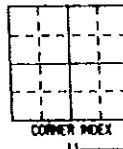
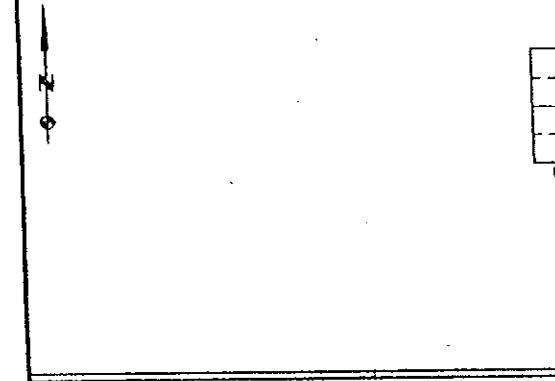
MONUMENT DESCRIPTION AND REMARKS:



S. 1/4 Corner Section 36-84-4
 REASON FOR PREPARING CERTIFICATE: A B. C OR D
 PREVIOUS BOOK _____ PAGE _____
Set 1/2" REBAR W/RED L.S.
CAP #11954. 1 1/2' South of
FENCE EAST AND 28' EAST OF
FENCE SOUTH



REASON FOR PREPARING CERTIFICATE: A, B, C OR D
 PREVIOUS BOOK _____, PAGE _____



REASON FOR PREPARING CERTIFICATE: A, B, C OR D
 PREVIOUS BOOK _____, PAGE _____



I hereby certify that this land surveying document was prepared and the related survey work was performed by me or under my direct personal supervision and that I am a duly licensed Land Surveyor under the laws of the State of Iowa.
 Signed: *Daniel J. Johnson* Date: 3-4-03
 Daniel J. Johnson, L.S. 11854
 My license renewed date: December 31, 2004
 Pages or sheets covered by this seal: 1
 (Enter submission unless specified here)

- REASON FOR PREPARING CERTIFICATE:
- A) THERE IS NO CERTIFICATE FOR THE CORNER ON FILE WITH THE RECORDER OF THE COUNTY IN WHICH THE CORNER IS LOCATED.
 - B) CORNER POSITION DIFFERS FROM THAT SHOWN IN THE PUBLIC RECORDS OF THE COUNTY IN WHICH THE CORNER IS LOCATED.
 - C) THE CORNER MONUMENT HAS BEEN REPLACED OR MODIFIED.
 - D) THE REFERENCE TIES REFERRED TO IN AN EXISTING PUBLIC RECORD ARE INCORRECT OR MISSING

SHEET NO. _____
 U.S. PUBLIC LAND SURVEY CORNER CERTIFICATE

HALL AND HALL ENGINEERS, INC.
 209 29TH STREET N.E.
 CEDAR RAPIDS, IOWA 52402
 (319) 362-9548

PROJECT NO. Jones County (Morley)
 DATE 5/4/00

SCALE: NONE
 COUNTY: County 3
 P.N.O. 6125