

2003 1051

FILED
RECORDERS OFFICE
JONES COUNTY IOWA

03 MAR 13 PM 12:53

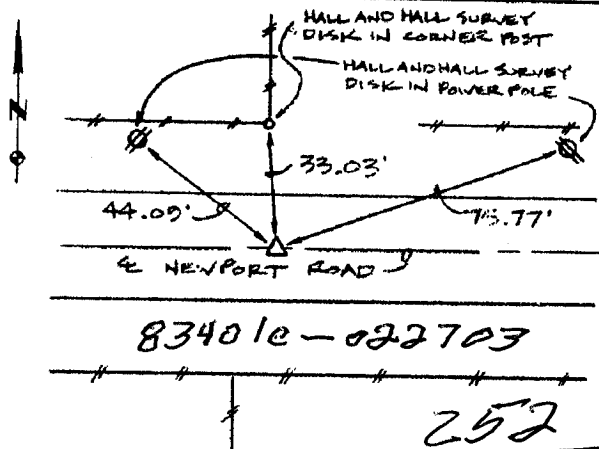
MARIE KRUTZFIELD
RECORDER 6.00Pd

PREPARED BY HALL & HALL ENGINEERS, INC. 209 29TH STREET N.E. CEDAR RAPIDS, IOWA 52402 (319) 362-9548

LAND SURVEY MONUMENTS SITUATED IN SECTION 1, TOWNSHIP 83 NORTH,
RANGE 4 WEST, OF THE FIFTH PRINCIPAL MERIDIAN, JONES COUNTY IOWA.

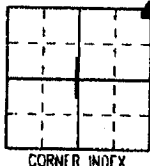
RECOVERY TIE DRAWING

MONUMENT DESCRIPTION AND REMARKS:

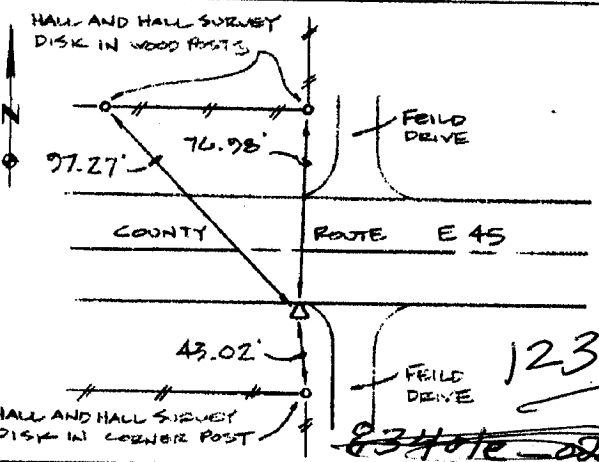


NE COR. 1/4 1/4, SEC. 1, T83N, R4W

REASON FOR PREPARING CERTIFICATE: (A) B, C OR D
PREVIOUS BOOK _____, PAGE _____
SET 1/2" REBAR WITH RED L.S. CAP
11954, 3" DEEP



CORNER INDEX

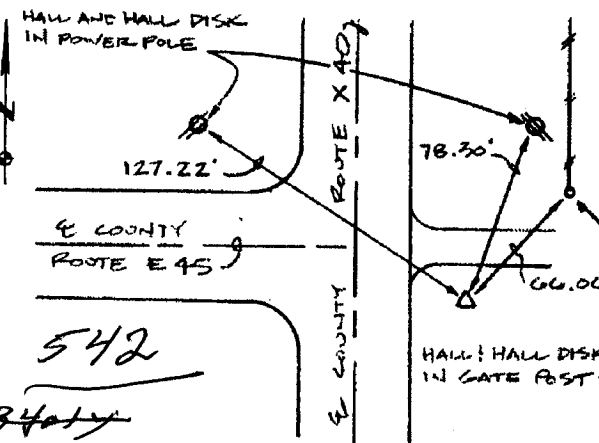


S/4 COR. 1/4 1/4, SEC. 1, T83N, R4W

REASON FOR PREPARING CERTIFICATE: A, B, C OR D
PREVIOUS BOOK _____, PAGE _____
FOUND 1/2" REBAR, 7' SOUTH OF EDGE
OF PAVEMENT



CORNER INDEX

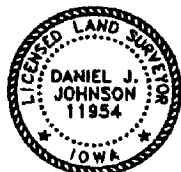


SE COR. 1/4 1/4, SEC. 1, T83N, R4W

REASON FOR PREPARING CERTIFICATE: (A) B, C OR D
PREVIOUS BOOK _____, PAGE _____
SET 1/2" REBAR WITH RED L.S. CAP # 11954,
36.5' EAST OF CENTERLINE



CORNER INDEX



I hereby certify that this land surveying document was prepared and the related survey work was performed by me or under my direct personal supervision and that I am a duly licensed Land Surveyor under the laws of the State of Iowa.

Signed: Daniel J. Johnson Date: 2-27-03

Daniel J. Johnson, L.S. 11954
My license renewal date is December 31, 2004

Pages or sheets covered by this seal: 1

REASON FOR PREPARING CERTIFICATE:

- A) THERE IS NO CERTIFICATE FOR THE CORNER ON FILE WITH THE RECORDER OF THE COUNTY IN WHICH THE CORNER IS LOCATED.
- B) CORNER POSITION DIFFERS FROM THAT SHOWN IN THE PUBLIC RECORDS OF THE COUNTY IN WHICH THE CORNER IS LOCATED
- C) THE CORNER MONUMENT HAS BEEN REPLACED OR MODIFIED.
- D) THE REFERENCE TIES REFERRED TO IN AN EXISTING PUBLIC RECORD ARE INCORRECT OR MISSING.

Sheet Title: U.S. PUBLIC LAND SURVEY CORNER CERTIFICATE

Project Title: X-40



HALL AND HALL ENGINEERS, INC.
209 29TH STREET N.E.
CEDAR RAPIDS, IOWA 52402
(319) 362-9548

Drawn by: DLK

Checked by: DJJ

Approved by: DJJ

Field Book No: COUNTY 3

Scale: NONE

Date: 2/13/03

Project No: Col25

UNITED STATES PUBLIC LAND SURVEY CORNER CERTIFICATE OF

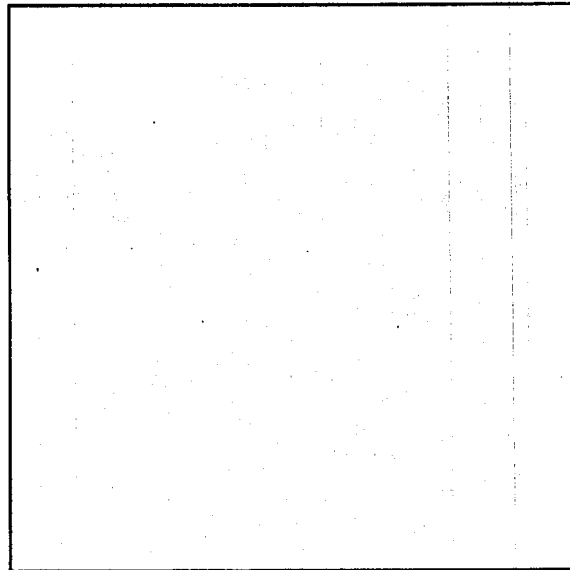
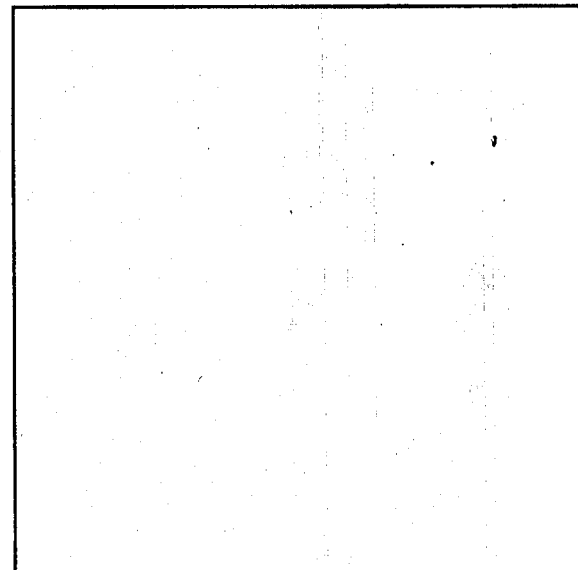
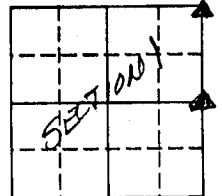
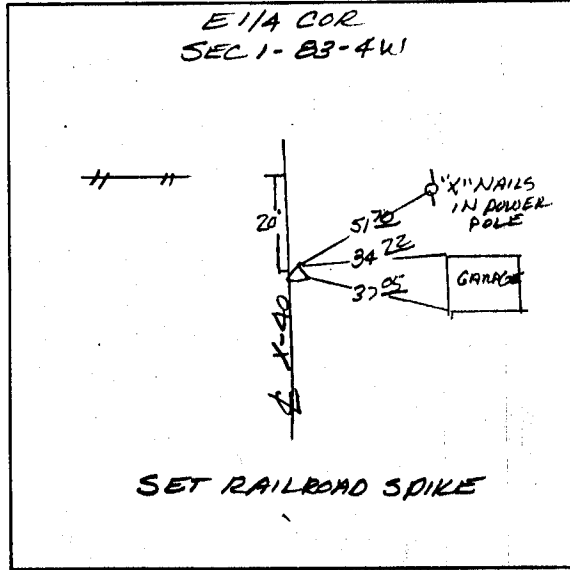
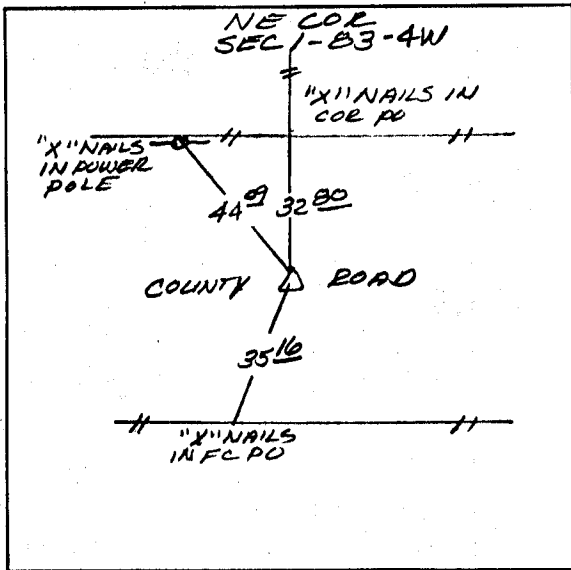
LAND SURVEY MONUMENTS SITUATED IN SECTION 1, TOWNSHIP 83 NORTH, RANGE 4 WEST, OF THE 5TH PRINCIPAL MERIDIAN JONES COUNTY IOWA.
PREVIOUSLY RECORDED IN BOOK 319 PAGE 39 IN COUNTY RECORDER'S OFFICE.
(book, page, document number, etc.)

(Show reason for preparing this certificate, the evidence and detailed procedures used in establishing the corner positions and monumentation found or placed.)

MONUMENT DESCRIPTION AND REMARKS: USED SAME CORNERS THAT I ESTABLISHED FOR A SURVEY IN ADJOINING SECTION 6-83-3W

PLAN - VIEW

(Show a minimum of three reference ties to durable physical objects, relevant monuments and physical conditions that will enable recovery of the corner.)



I hereby certify that the survey work was completed and this certificate was prepared by me or under my direct personal supervision and that I am a duly registered land surveyor under the laws of the state of Iowa. My registration expires December 31, 1992.

Signature: Larry R. McGuire
LARRY R. MCGUIRE

Date: 7/21/92 Reg. No. 9019

LAND CORNERS TO BE RECORDED			
Corners	Section	Twp:	Range
NE COR	1	83	4W
E1/4 COR	1	83	4W

83401e-072192
83401o-072192



UNITED STATES PUBLIC LAND SURVEY CORNER CERTIFICATE OF

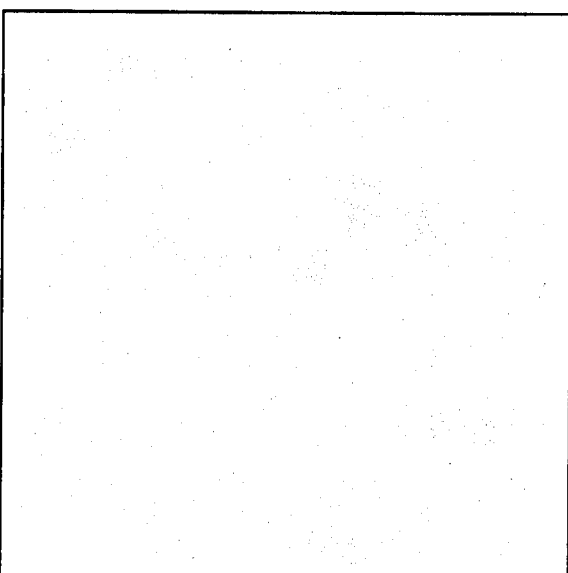
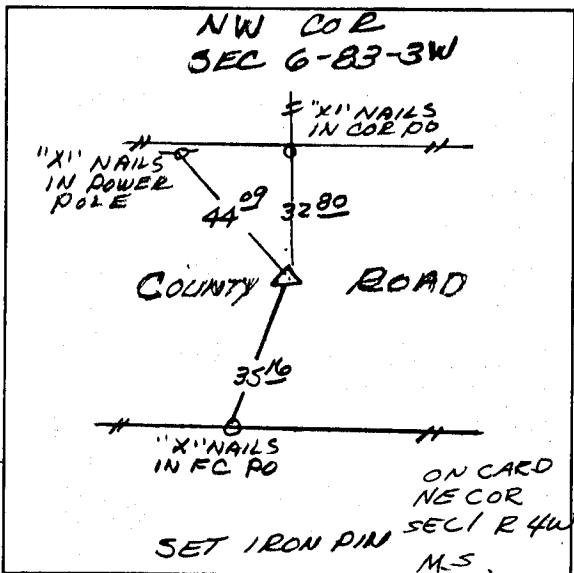
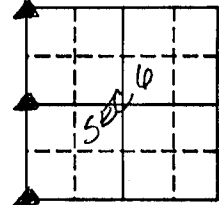
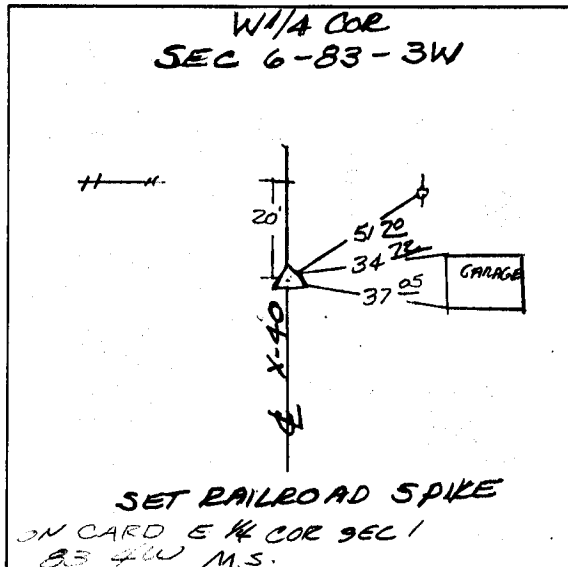
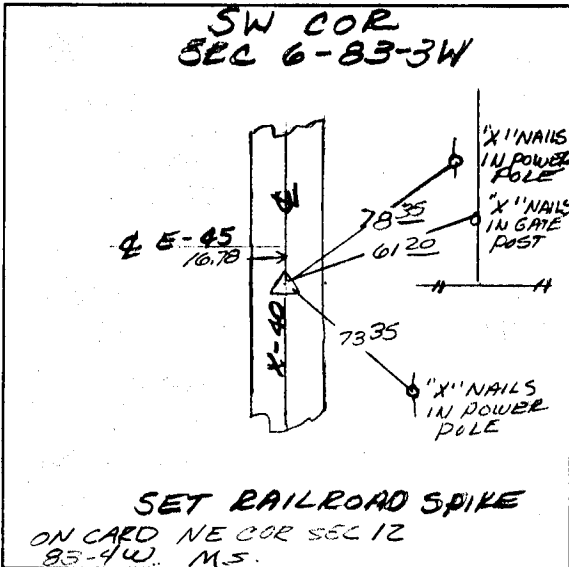
LAND SURVEY MONUMENTS SITUATED IN SECTION 6, TOWNSHIP 83 NORTH, RANGE 3 WEST, OF THE 5TH PRINCIPAL MERIDIAN JONES COUNTY IOWA.
PREVIOUSLY RECORDED IN DOES NOT APPLY IN COUNTY RECORDER'S OFFICE.
(book, page, document number, etc.)

(Show reason for preparing this certificate, the evidence and detailed procedures used in establishing the corner positions and monumentation found or placed.)

MONUMENT DESCRIPTION AND REMARKS: RE-ESTABLISHED SW COR FROM DON BUNTING SURVEY IN THE SE 1/4 SEC 1-83-4W, RE-ESTABLISHED W 1/4 COR BY MEASURING MILE AND USING EVIDENCE OF OLD ROAD TO THE WEST. SEARCHED FOR CONC MONU AT NW COR DID NOT FIND SET IRON PIN USING COUNTY TIES AND EVIDENCE

PLAN - VIEW

(Show a minimum of three reference ties to durable physical objects, relevant monuments and physical conditions that will enable recovery of the corner.)



I hereby certify that the survey work was completed and this certificate was prepared by me or under my direct personal supervision and that I am a duly registered land surveyor under the laws of the state of Iowa. My registration expires December 31, 1992.

Signature: Larry R. McGuire
LARRY R. MCGUIRE

Date: 5/7/92 Reg. No. 9019

LAND CORNERS TO BE RECORDED

Corners	Section	Twp.	Range
SW COR	6	83	3W
W 1/4 COR	6	83	3W
NW COR	6	83	3W



THIS IS NOT A CERTIFICATION

JONES COUNTY ENGINEER'S OFFICE, 19501 HWY. 64, ANAMOSA, IOWA, 52205 (319)462-3785

UNITED STATES PUBLIC LAND SURVEY CORNER CERTIFICATE

LAND SURVEY MONUMENTS SITUATED IN SECTION 36, TOWNSHIP 84
NORTH, RANGE 4 WEST OF THE 5TH P.M., JONES COUNTY, IOWA

CORNERS TO BE INDEXED

CORNER SOUTHEAST	SECTION 36	TOWNSHIP 84N	RANGE 4W
---------------------	---------------	-----------------	-------------

OFFICE FILE NO. _____
84436y_061504.tif

REF:
JONES COUNTY SURVEY
CREW, (KIRCHOFF)
(1936)

PREVIOUSLY RECORDED IN BOOK _____, PAGE _____
MONUMENT DESCRIPTION AND HOW ESTABLISHED _____ FOUND _____

10"x12"x16" LIMESTONE 6" BELOW SURFACE IN SOUTH SHOULDER OF ROAD IN LINE WITH TWP. LINE FENCE. LOWERED STONE, SET STANDARD CONCRETE MONUMENT ABOVE WITH TOP DOWN 14" DOWN. SOUTHEAST CORNER SECTION 36, TOWNSHIP 84 NORTH, RANGE 4 WEST OF THE 5TH PRINCIPAL MERIDIAN, JONES COUNTY IOWA.

CORNERS TO BE INDEXED

CORNER	SECTION	TOWNSHIP	RANGE
--------	---------	----------	-------

OFFICE FILE NO. _____

PREVIOUSLY RECORDED IN BOOK _____, PAGE _____
MONUMENT DESCRIPTION AND HOW ESTABLISHED _____

CORNERS TO BE INDEXED

CORNER	SECTION	TOWNSHIP	RANGE
--------	---------	----------	-------

OFFICE FILE NO. _____

PREVIOUSLY RECORDED IN BOOK _____, PAGE _____
MONUMENT DESCRIPTION AND HOW ESTABLISHED _____

CORNERS TO BE INDEXED

CORNER	SECTION	TOWNSHIP	RANGE
--------	---------	----------	-------

OFFICE FILE NO. _____

PREVIOUSLY RECORDED IN BOOK _____, PAGE _____
MONUMENT DESCRIPTION AND HOW ESTABLISHED _____

~~I hereby declare that this plat, survey or report was made by me or under my direct personal supervision and that I am a duly registered Land Surveyor under the laws of the State of Iowa.~~

Signed: _____

SEAL

JONES COUNTY
ENGINEER'S OFFICE

19501 HWY. 64,
ANAMOSA, IOWA,
52205 (319)462-3785

D,