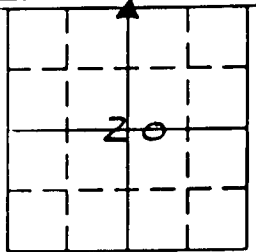


UNITED STATES PUBLIC LAND SURVEY CORNER CERTIFICATE

LAND SURVEY MONUMENTS SITUATED IN SECTION 20, TOWNSHIP 83 N,
RANGE 4 W, OF THE 5th. PRINCIPAL MERIDIAN, JONES,
COUNTY, IOWA.

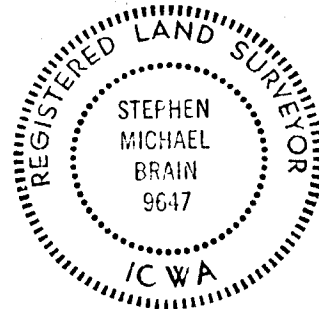
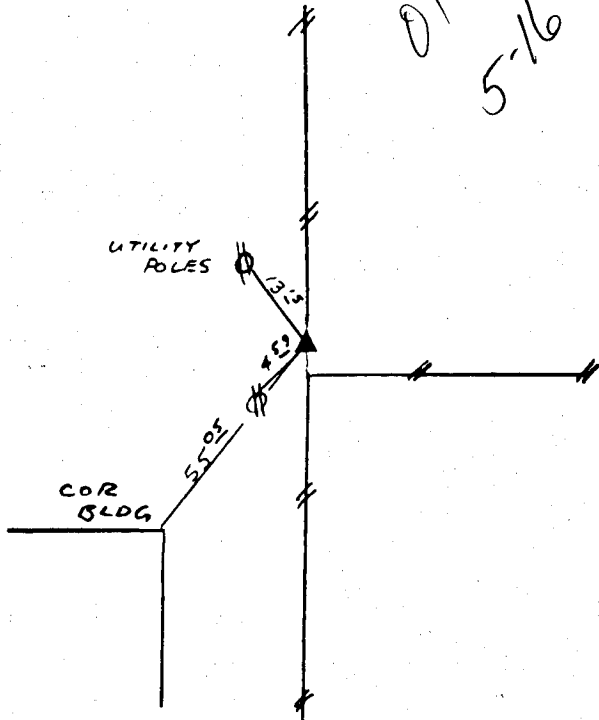
N NO SCALE

RECOVERY TIE DRAWING



N 1/4 20-83N-4W

*ON CORC
5-16-91*



PREVIOUSLY RECORDED IN BOOK _____ PAGE _____

MONUMENT DESCRIPTION AND HOW ESTABLISHED:
FOUND SCM @ SURFACE

PREVIOUSLY RECORDED IN BOOK _____ PAGE _____

MONUMENT DESCRIPTION AND HOW ESTABLISHED:

I HEREBY DECLARE THAT THE SURVEY WORK WAS COMPLETED AND THIS CERTIFICATE WAS PREPARED BY ME OR UNDER MY DIRECT PERSONAL SUPERVISION AND THAT I AM A DULY REGISTERED LAND SURVEYOR UNDER THE LAWS OF THE STATE OF IOWA.

Stephen Michael Brain
STEPHEN MICHAEL BRAIN, P.E. & L.S. 9647

List Corners to be Indexed

Corners	Section	Twp	Range
S 1/4	17	83 N	4 W

83420c-050691

PAMENT ENGINEERING, INC.
HIAWATHA, IOWA

SECTION CORNER CERTIFICATE

OF
 LAND SURVEY MONUMENTS SITUATED IN SECTION 20, TOWNSHIP 83 NORTH,
 RANGE 4 WEST, OF THE FIFTH PRINCIPAL MERIDIAN, Jones, COUNTY, IOWA.

PREVIOUSLY RECORDED IN BOOK _____ AT PAGE _____.

FOR RECORDER'S USE

REASON FOR PREPARING CERTIFICATE:

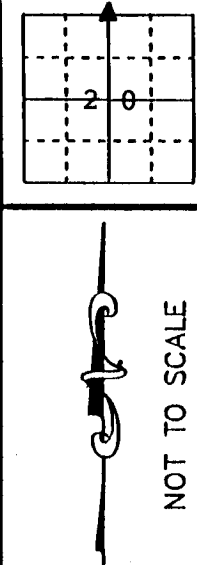
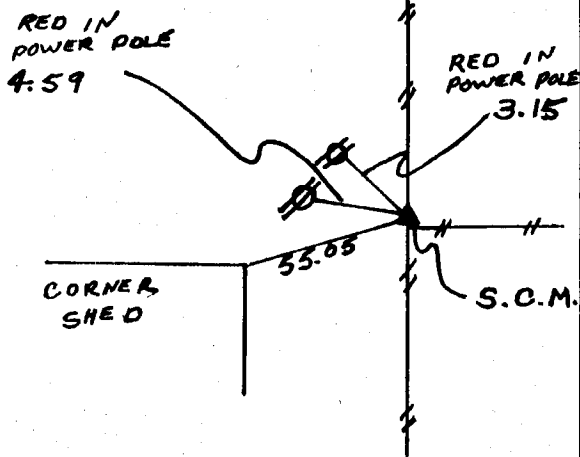
- A) THERE IS NO CERTIFICATE FOR THE CORNER ON FILE WITH THE RECORDER OF THE COUNTY IN WHICH THE CORNER IS LOCATED.
- B) CORNER POSITION DIFFERS FROM THAT SHOWN IN THE PUBLIC RECORDS OF THE COUNTY IN WHICH THE CORNER IS LOCATED.
- C) THE CORNER MONUMENT HAS BEEN REPLACED OR MODIFIED.
- D) THE REFERENCE TIES REFERRED TO IN AN EXISTING PUBLIC RECORD ARE INCORRECT.

MONUMENT DESCRIPTION AND REMARKS :

Found S.C.M. flush with top of ground under fence 0.8 ft. North of fence corner post.

RECOVERY TIE DRAWING

N 1/4 Corner 20-83-4



*GREENFIELD
 N 1/4 SEC 20
 ON CARD
 12-6-90
 M.S*

I, GLEN D. MEISNER, CERTIFY THAT THE CORNER LOCATION(S) SHOWN ON THIS RECORD WERE DETERMINED BY ME OR UNDER MY DIRECTION AND CONTROL AND THAT THIS U.S. PUBLIC LAND SURVEY MONUMENT RECORD IS CORRECT AND COMPLETE TO THE BEST OF MY KNOWLEDGE AND BELIEF.



Glen D. Meisner 11-12-90
 GLEN D. MEISNER L.S. NO 8165 DATE

834200-111290

DZFOEL	GOVERNMENT CORNER <input type="checkbox"/> 5/8" TIE PIN SET CENTERLINE EXISTING FENCE LINE R.O.W. LINE	SHEET TITLE: U.S. PUBLIC LAND SURVEY RECORD	HALL AND HALL ENGINEERS, INC. 226 29TH STREET DRIVE S.E. CEDAR RAPIDS, IOWA 52403 319-362-9548
	PROJECT TITLE:	SCALE:	
DWN	REC	APP	DATE