

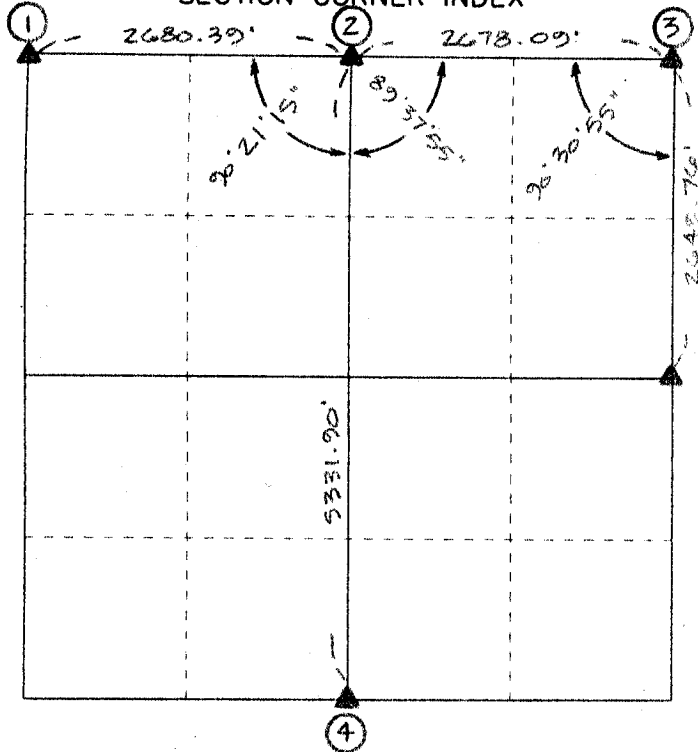
FILED
RECORDERS OFFICE
JONES COUNTY IOWA

05 JAN 21 AM 9:59

MARIE KRUTZFIELD
RECORDER 7:00 pd

PREPARED BY HALL & HALL ENGINEERS, INC. 209 29TH STREET N.E. CEDAR RAPIDS, IOWA 52402 (319) 362-9548

SECTION CORNER INDEX

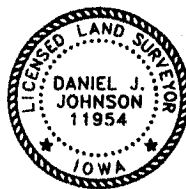


U.S. PUBLIC LAND SURVEY CORNER CERTIFICATE

LAND SURVEY MONUMENTS SITUATED IN SECTION 16,
TOWNSHIP 83 NORTH, RANGE 4 WEST, OF THE FIFTH
PRINCIPAL MERIDIAN, JONES COUNTY IOWA.

REASON FOR PREPARING CERTIFICATE:

- A) THERE IS NO CERTIFICATE FOR THE CORNER ON FILE WITH THE RECORDER OF THE COUNTY IN WHICH THE CORNER IS LOCATED.
- B) CORNER POSITION DIFFERS FROM THAT SHOWN IN THE PUBLIC RECORDS OF THE COUNTY IN WHICH THE CORNER IS LOCATED.
- C) THE CORNER MONUMENT HAS BEEN REPLACED OR MODIFIED.
- D) THE REFERENCE TIES REFERRED TO IN AN EXISTING PUBLIC RECORD ARE INCORRECT OR MISSING.

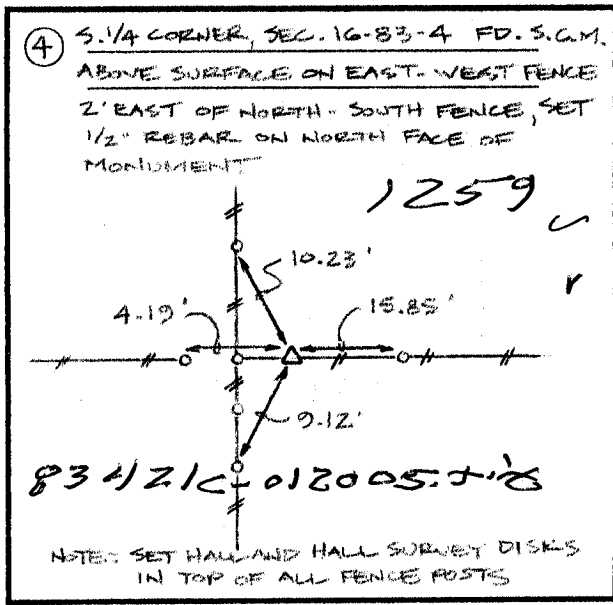
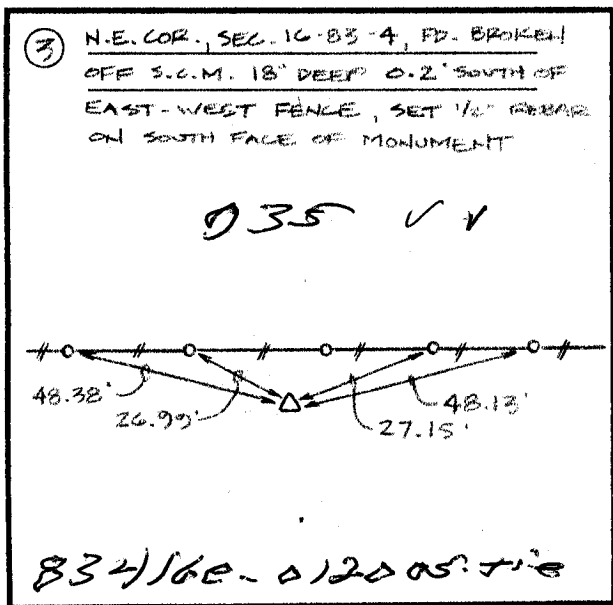
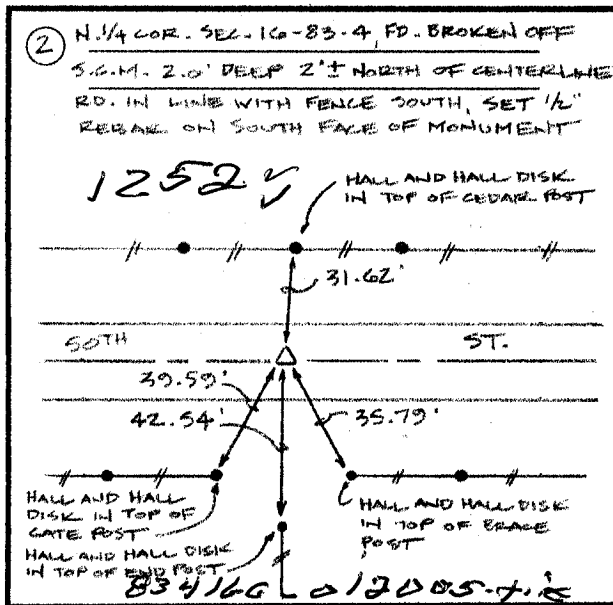
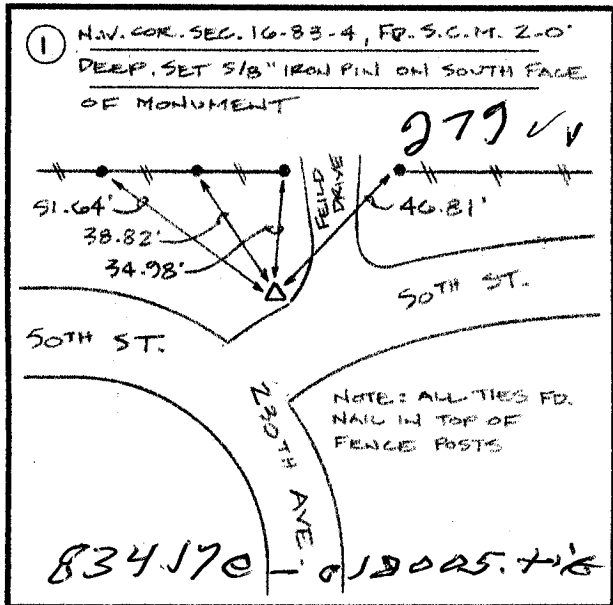


I hereby certify that this land surveying document was prepared and the related survey work was performed by me or under my direct personal supervision and that I am a duly licensed Land Surveyor under the laws of the State of Iowa.

Signed:

Date:

Daniel J. Johnson 1-20-05
Daniel J. Johnson, L.S. 11954
My license renewal date is December 31, 2006



"NIEHAUS"

Drawn by: DLK	Checked by: DJJ	Approved by: DJJ	Field Book No: 07-68	Scale: N/A	Date: 2/20/03	Project No: 7911
------------------	--------------------	---------------------	-------------------------	---------------	------------------	---------------------

THIS IS NOT A CERTIFICATION

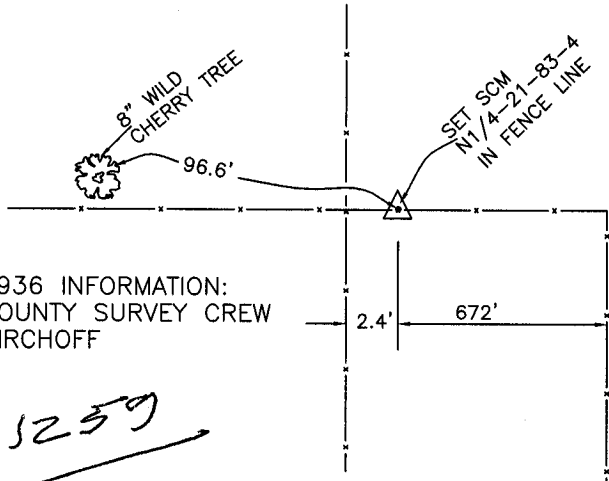
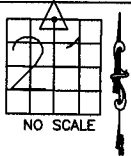
JONES COUNTY ENGINEER'S OFFICE, 19501 HWY. 64, ANAMOSA, IOWA, 52205 (319)462-3785

UNITED STATES PUBLIC LAND SURVEY CORNER CERTIFICATE

LAND SURVEY MONUMENTS SITUATED IN SECTION 21, TOWNSHIP 83
NORTH, RANGE 4 WEST OF THE 5TH P.M., JONES COUNTY, IOWA

CORNERS TO BE INDEXED

CORNER SECTION TOWNSHIP RANGE
N-QUARTER 21 83N 4W
OFFICE FILE NO.
83421c-081203.jpg



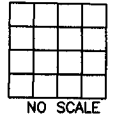
1936 INFORMATION:
COUNTY SURVEY CREW
KIRCHOFF

ENGINEER'S CORNER STONE

PREVIOUSLY RECORDED IN BOOK #6, PAGE 68
MONUMENT DESCRIPTION AND HOW ESTABLISHED FOUND 18"X12"X
5" LIMESTONE 2' BELOW SURFACE IN E-W FENCE LINE. LOWERED
LIMESTONE TO 4.5' BELOW SURFACE AND SET STANDARD CONCRETE
MONUMENT DIRECTLY ABOVE, TOP FLUSH WITH SURFACE. NORTH
QUARTER CORNER SECTION 21, TOWNSHIP 83 NORTH, RANGE 4 WEST
OF THE 5TH PRINCIPAL MERIDIAN, JONES COUNTY, IOWA.

CORNERS TO BE INDEXED

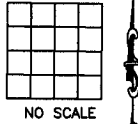
CORNER SECTION TOWNSHIP RANGE
OFFICE FILE NO.



PREVIOUSLY RECORDED IN BOOK _____, PAGE _____
MONUMENT DESCRIPTION AND HOW ESTABLISHED _____

CORNERS TO BE INDEXED

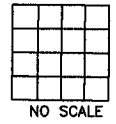
CORNER SECTION TOWNSHIP RANGE
OFFICE FILE NO.



PREVIOUSLY RECORDED IN BOOK _____, PAGE _____
MONUMENT DESCRIPTION AND HOW ESTABLISHED _____

CORNERS TO BE INDEXED

CORNER SECTION TOWNSHIP RANGE
OFFICE FILE NO.



PREVIOUSLY RECORDED IN BOOK _____, PAGE _____
MONUMENT DESCRIPTION AND HOW ESTABLISHED _____

~~I hereby declare that this plat, survey or report was made by me or under my direct personal supervision and that I am a duly registered Land Surveyor under the laws of the State of Iowa.~~

Signed: _____

SEAL

JONES COUNTY
ENGINEER'S OFFICE

19501 HWY. 64,
ANAMOSA, IOWA,
52205 (319)462-3785