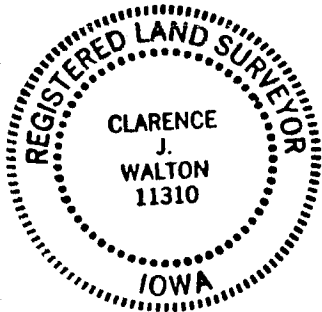
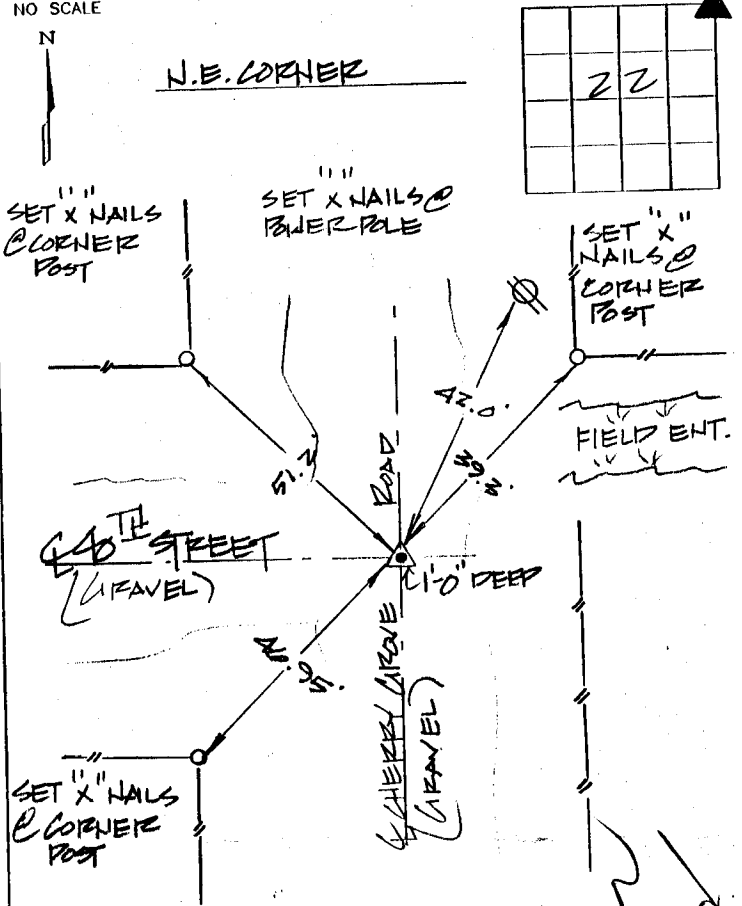
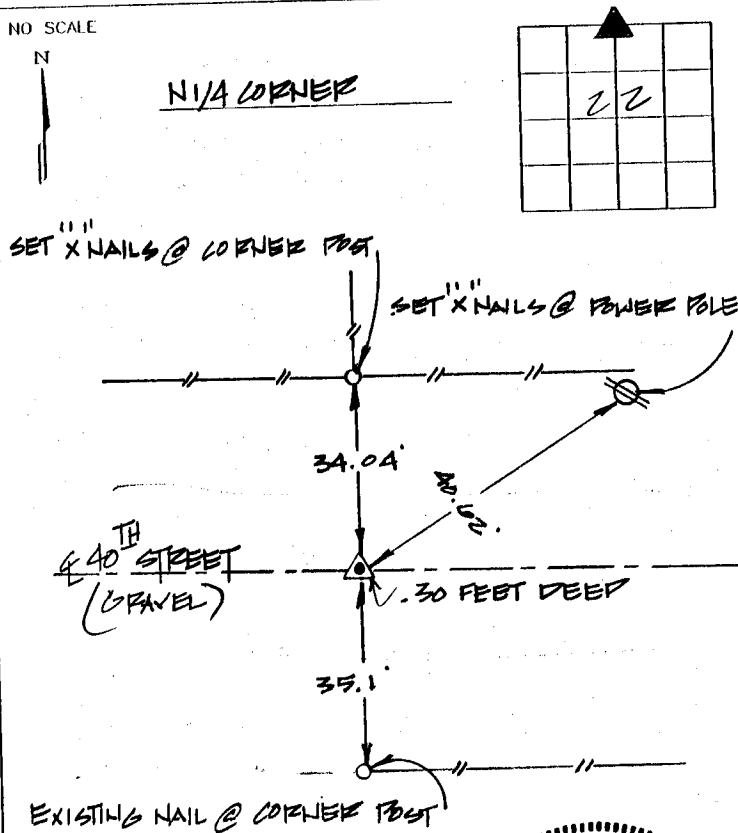


RECEIVED
 AUG 16 1996
 JONES COUNTY IOWA

BRAIN ENGINEERING, INC., 777 10TH STREET, MARION, IOWA 52302 PH. (319) 373-1318

UNITED STATES PUBLIC LAND SURVEY CORNER CERTIFICATE

LAND SURVEY MONUMENTS SITUATED IN SECTION 22, TOWNSHIP 83 NORTH
 RANGE 4 WEST OF THE 5TH P.M., JONES COUNTY, IOWA.



PREVIOUSLY RECORDED IN BOOK _____ PAGE _____

MONUMENT DESCRIPTION AND HOW ESTABLISHED FOUND
1/2" REBAR @ THE N1/4 CORNER OF SEC. 22-
TWN. 83N. R4W. 5TH P.M.

PREVIOUSLY RECORDED IN BOOK _____ PAGE _____

MONUMENT DESCRIPTION AND HOW ESTABLISHED FOUND
1/2" REBAR @ THE N.E. CORNER OF SEC. 22-
TWN. 83N. R4W. 5TH P.M.

83422c-073196, 83422e-073196

I hereby declare that this plat, survey or report was made by me or under my direct personal supervision and that I am a duly registered Land Surveyor under the laws of the State of Iowa.

Signed Clarence J. Walton Date 7/31/96

Clarence J. Walton L.S. Iowa Reg No. 11310
 My Registration Renewal Date is December 31, 1997

CORNER	SECTION	TOWNSHIP	RANGE
N1/4	22	83	4
N.E.	22	83	4

BRAIN ENGINEERING, INC.
 777 10TH STREET
 MARION, IOWA 52302
 (319) 373-1318