

COPY

Jones County, Iowa
 Marie Krutzfield, Recorder
 Fee Book 2010 3477

12/13/2010 @0216PM
 ZSC SEC COR CERT # Pages: 1
 Book: Page:
 Total Fees: \$0.00

PREPARED BY
 CLARENCE J. WALTON, JONES COUNTY ENGINEER'S OFFICE, 19501 HWY. 64, ANAMOSA, IOWA, 52205 (319) 462-3785

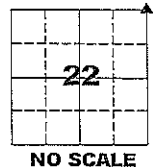
UNITED STATES PUBLIC LAND SURVEY CORNER CERTIFICATE

LAND SURVEY MONUMENTS SITUATED IN SECTION 22, TOWNSHIP 83 NORTH,
 RANGE 4 WEST OF THE 5TH PRINCIPAL MERIDIAN, JONES COUNTY, IOWA.

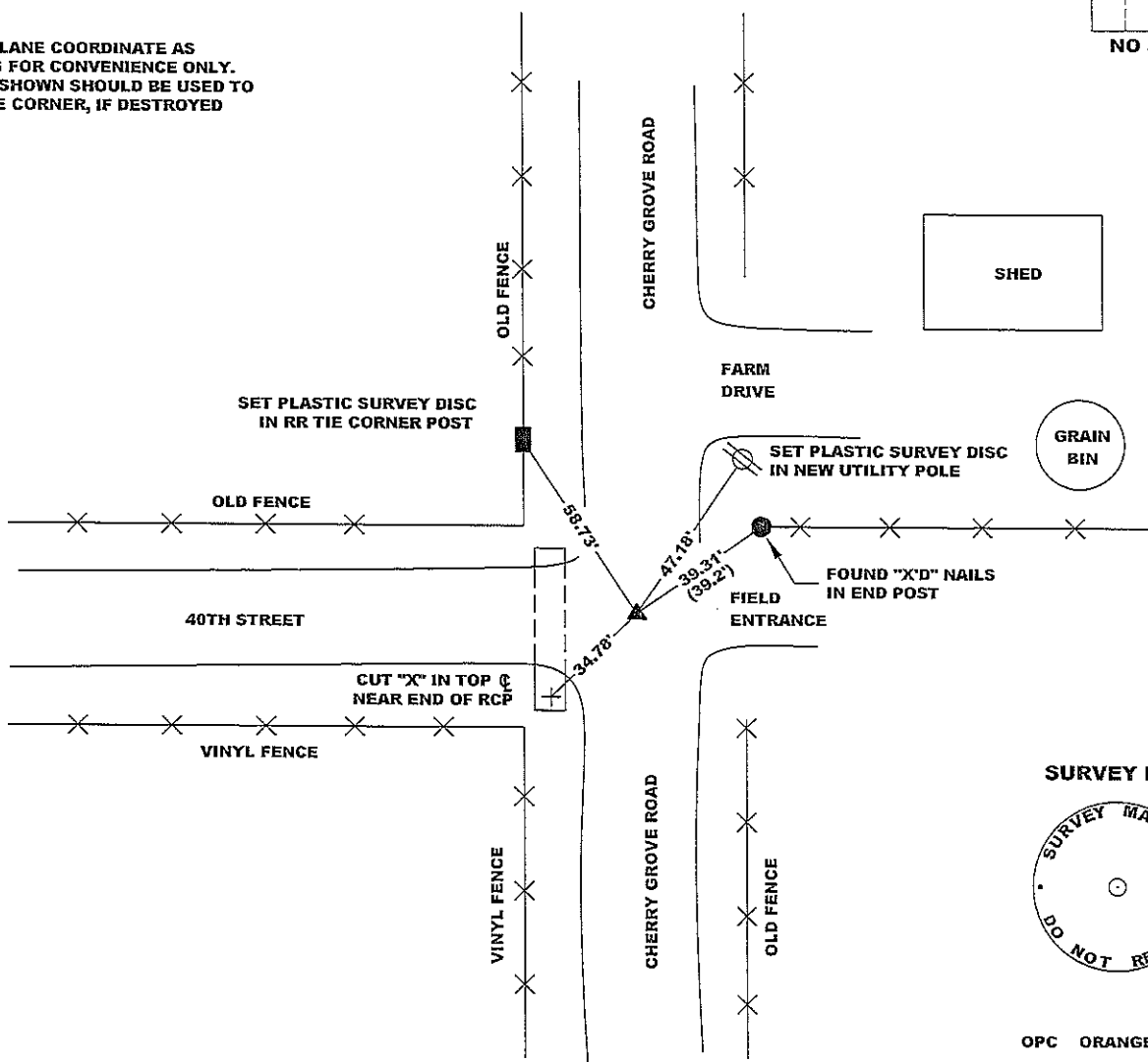
PROJECT: M-1311

STATE PLANE COORDINATE
 NAD 83 IOWA NORTH
 N 3467747.50
 E 5522466.38

CORNER SECTION TOWNSHIP RANGE
 NE CORNER 22 T83N R4W



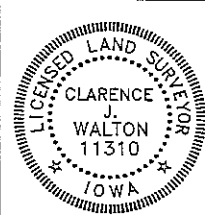
NOTE:
 THE STATE PLANE COORDINATE AS
 INDICATED IS FOR CONVENIENCE ONLY.
 THE TIES AS SHOWN SHOULD BE USED TO
 REPLACE THE CORNER, IF DESTROYED



PREVIOUSLY RECORDED IN BOOK 406, PAGE 220

MONUMENT DESCRIPTION AND HOW ESTABLISHED FOUND 5/8" X 24" REBAR 15" DEEP. SET 5/8" X 10" REBAR ATOP 5/8" X 24" REBAR. TOP OF REBAR 6" BELOW PRESENT ROAD SURFACE. MAGNETIZED BOTH REBAR TO AID IN DETECTION. WITH THE EXCEPTION OF THE FOUND "X" NAILS IN THE END POST OF THE FENCE TO THE EAST, NO OTHER TIES REFERENCED IN THE RECORDED CORNER CERTIFICATE WERE IN EXISTANCE

FIELD BOOK MISC. 2009-2010, PAGE 156. DATE OF SURVEY: 9/1/10



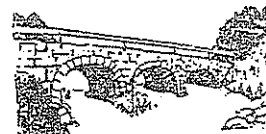
I hereby certify that this land surveying document and the related survey work was performed by me or under my direct personal supervision and that I am a duly registered Land Surveyor under the laws of the State of Iowa.
 Signed: *Clarence J. Walton* 12/9/10
 Clarence J. Walton, L.S.
 My Registration Renewal Date is December 31, 2011
 Iowa License Number 11310
 Pages or sheets covered by this seal: 1 of 1.

- A. THERE IS NO CERTIFICATE FOR THE CORNER ON FILE WITH THE RECORDER OF THE COUNTY IN WHICH THE CORNER IS LOCATED.
- B. THE CORNER MONUMENT HAS BEEN REPLACED OR MODIFIED.
- C. THE SURVEYOR IN RESPONSIBLE CHARGE OF THE LAND SURVEYING ACCEPTS A CORNER POSITION THAT DIFFERS FROM THAT SHOWN IN THE PUBLIC RECORDS OF THE COUNTY IN WHICH THE CORNER IS LOCATED.
- D. THE REFERENCE TIES REFERRED TO IN AN EXISTING PUBLIC RECORD NO LONGER EXIST.

CORNERS TO BE INDEXED

CORNER	SECTION	TOWNSHIP	RANGE
NE CORNER	22	83N	4W
SW CORNER	14	83N	4W
NW CORNER	23	83N	4W
SE CORNER	15	83N	4W

JONES COUNTY ENGINEER'S OFFICE



19501 HWY. 64, ANAMOSA, IOWA 52205
 (319) 462-3785

