

COPY

Jones County, Iowa
 Marie Krutzfield, Recorder
 Fee Book 2010 3498
 12/14/2010 @1121AM
 ZSC SEC COR CERT
 Book: Page: # Pages: 1
 Total Fees: \$0.00

PREPARED BY

CLARENCE J. WALTON, JONES COUNTY ENGINEER'S OFFICE, 19501 HWY. 64, ANAMOSA, IOWA, 52205 (319) 462-3785

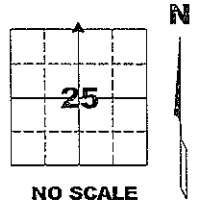
UNITED STATES PUBLIC LAND SURVEY CORNER CERTIFICATE

**LAND SURVEY MONUMENTS SITUATED IN SECTION 25, TOWNSHIP 83 NORTH,
 RANGE 4 WEST OF THE 5TH PRINCIPAL MERIDIAN, JONES COUNTY, IOWA.**

PROJECT: M-1511

CORNER SECTION TOWNSHIP RANGE
 N 1/4 CORNER 25 T83N R4W

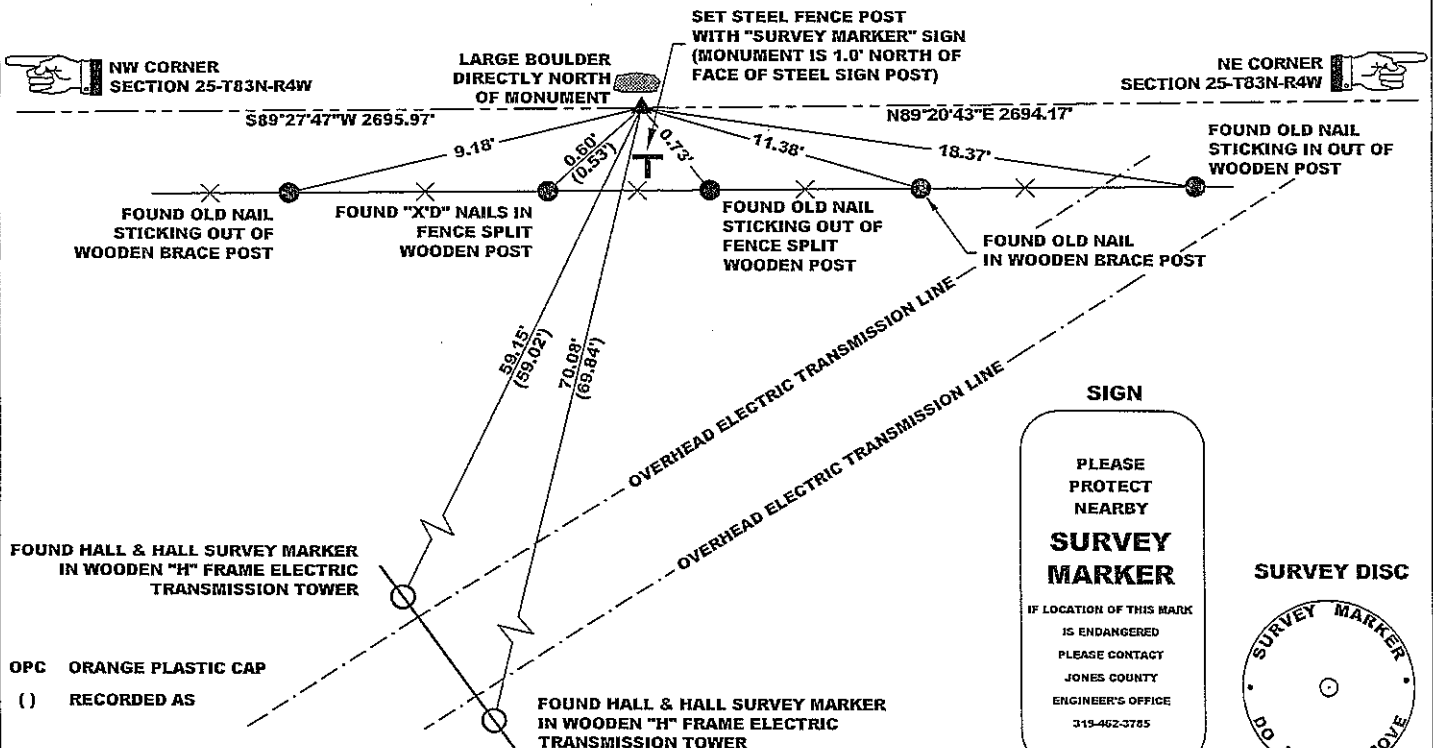
STATE PLANE COORDINATE
 NAD 83 IOWA NORTH
 N 3462514.83
 E 5530643.66



NOTES:

- 1) THE STATE PLANE COORDINATES AS SHOWN ARE FOR CONVENIENCE ONLY. THE TIES AS SHOWN SHOULD BE USED TO REPLACE THE CORNER, IF DESTROYED.
- 2) COORDINATES AS SHOWN ARE GRID COORDINATES AND BASED ON JONES COUNTY G.P.S. CONTROL NETWORK WHICH IN TURN IS BASED ON NAD 83 IOWA NORTH DATUM.
- 3) BASIS OF BEARINGS ARE BASED ON JONES COUNTY G.P.S. CONTROL NETWORK.
- 4) ALL MEASUREMENTS ARE IN FEET AND DECIMALS THEREOF. LONG DISTANCES SHOWN ARE GRID DISTANCES.

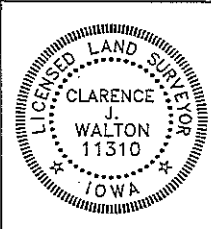
"SURVEY MARKER"



PREVIOUSLY RECORDED IN RECORDER'S DOCUMENT No. 2002 3021

MONUMENT DESCRIPTION AND HOW ESTABLISHED FOUND W.P.A. MONUMENT (4"x4"x48" CONCRETE MONUMENT WITH BRASS DISC) 15" BELOW EXISTING GROUND SURFACE. SET STEEL FENCE POST WITH "SURVEY MARKER" SIGN AS A WITNESS AND FOR PROTECTION.

FIELD BOOK MISC. 2009-2010, PAGE 144. DATE OF SURVEY: 11/17/10



I hereby certify that this land surveying document and the related survey work was performed by me or under my direct personal supervision and that I am a duly registered Land Surveyor under the laws of the State of Iowa.
 Signed: *Clarence J. Walton* 12/9/10
 Clarence J. Walton, L.S.
 My Registration Renewal Date is December 31, 2011
 Iowa License Number 11310
 Pages or sheets covered by this seal: 1 of 1.

- A. THERE IS NO CERTIFICATE FOR THE CORNER ON FILE WITH THE RECORDER OF THE COUNTY IN WHICH THE CORNER IS LOCATED.
- B. THE CORNER MONUMENT HAS BEEN REPLACED OR MODIFIED.
- C. THE SURVEYOR IN RESPONSIBLE CHARGE OF THE LAND SURVEYING ACCEPTS A CORNER POSITION THAT DIFFERS FROM THAT SHOWN IN THE PUBLIC RECORDS OF THE COUNTY IN WHICH THE CORNER IS LOCATED.
- D. THE REFERENCE TIES REFERRED TO IN AN EXISTING PUBLIC RECORD NO LONGER EXIST.
- RETIRED CORNER, ADDED STATE PLANE COORDINATES.

CORNERS TO BE INDEXED			
CORNER	SECTION	TOWNSHIP	RANGE
N 1/4 CORNER	25	83N	4W
S 1/4 CORNER	24	83N	4W

JONES COUNTY ENGINEER'S OFFICE

19501 HWY. 64, ANAMOSA, IOWA 52205
 (319) 462-3785

SIGN

PLEASE
 PROTECT
 NEARBY

**SURVEY
 MARKER**

IF LOCATION OF THIS MARK
 IS ENDANGERED
 PLEASE CONTACT
 JONES COUNTY
 ENGINEER'S OFFICE
 319-462-3785

SURVEY DISC

2003 1065
 FILED
 RECORDERS OFFICE
 JONES COUNTY IOWA

03 MAR 13 PM 1:09

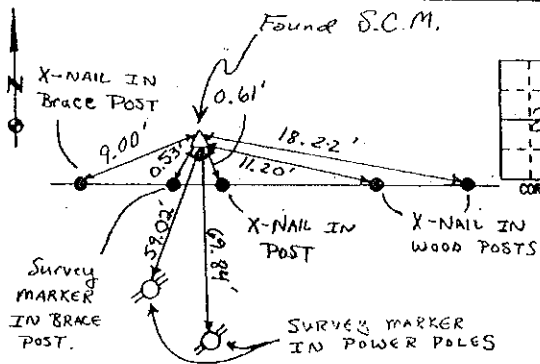
MARIE KRUTZFIELD
 RECORDER 6.00 Pd

PREPARED BY HALL & HALL ENGINEERS, INC. 209 29TH STREET N.E. CEDAR RAPIDS, IOWA 52402 (319) 362-9548

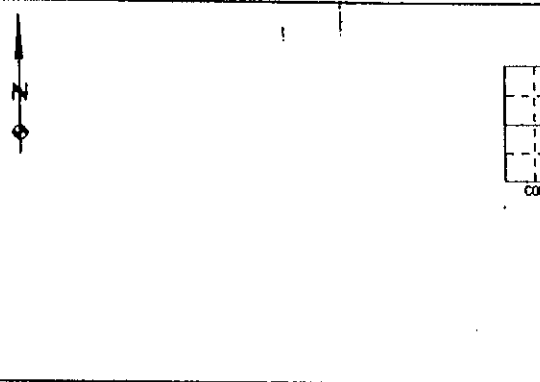
LAND SURVEY MONUMENTS SITUATED IN SECTION 25, TOWNSHIP 83 NORTH,
 RANGE 4 WEST, OF THE FIFTH PRINCIPAL MERIDIAN, JONES COUNTY IOWA.

RECOVERY TIE DRAWING

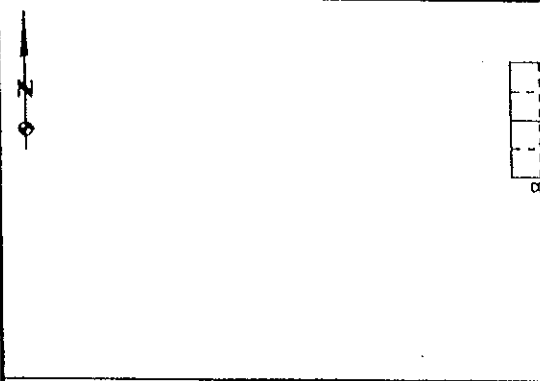
MONUMENT DESCRIPTION AND REMARKS:



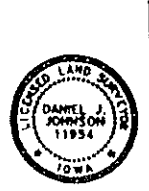
N. 1/4 Corner Section 25-83-4
 REASON FOR PREPARING CERTIFICATE: A B, C OR D
 PREVIOUS BOOK _____ PAGE _____
FOUND S.C.M. 1/2' NORTH
OF EAST-WEST FENCE.



REASON FOR PREPARING CERTIFICATE: A, B, C OR D
 PREVIOUS BOOK _____ PAGE _____



REASON FOR PREPARING CERTIFICATE: A, B, C OR D
 PREVIOUS BOOK _____ PAGE _____



I hereby certify that this land surveying document was prepared and the related survey work was performed by me or under my direct personal supervision and that I am a duly licensed Land Surveyor under the laws of the State of Iowa.
 Signed: Daniel J. Johnson Date: 2-27-03
 Daniel J. Johnson, L.S. 11934
 My license renewed date is December 31, 2004
 Pages or sheets covered by this seal:
 (Entire submission unless specified here) 1

REASON FOR PREPARING CERTIFICATE:
 A) THERE IS NO CERTIFICATE FOR THE CORNER ON FILE WITH THE RECORDER OF THE COUNTY IN WHICH THE CORNER IS LOCATED.
 B) CORNER POSITION DIFFERS FROM THAT SHOWN IN THE PUBLIC RECORDS OF THE COUNTY IN WHICH THE CORNER IS LOCATED.
 C) THE CORNER MONUMENT HAS BEEN REPLACED OR MODIFIED.
 D) THE REFERENCE TIES REFERRED TO IN AN EXISTING PUBLIC RECORD ARE INCORRECT OR MISSING

SHEET NO. _____ U.S. PUBLIC LAND SURVEY CORNER CERTIFICATE

PROJECT NO. Jones County

HALL AND HALL ENGINEERS, INC.
 209 29TH STREET N.E.
 CEDAR RAPIDS, IOWA 52402
 (319) 362-9548

SCALE: NONE COUNTY: Jones No. 6125

2002 3021

FILED
RECORDERS OFFICE
JONES COUNTY IOWA

83425 C - 081602

02 AUG 16 PM 12:47

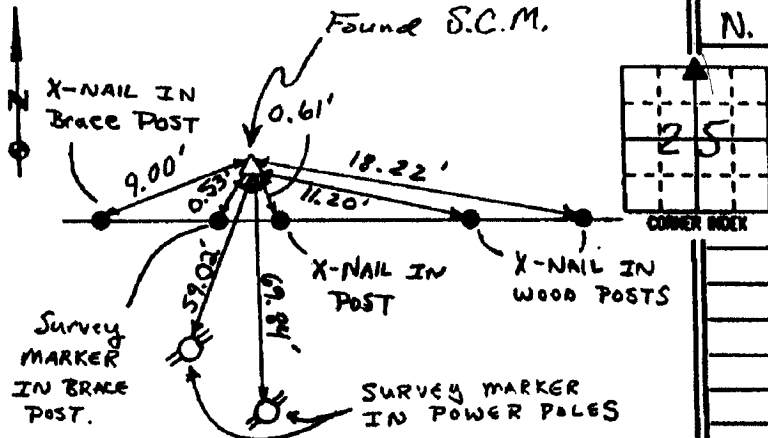
MARIE KRUTZFIELD
RECORDER 6:00pd

PREPARED BY HALL & HALL ENGINEERS, INC. 209 29TH STREET N.E. CEDAR RAPIDS, IOWA 52402 (319) 362-9548

LAND SURVEY MONUMENTS SITUATED IN SECTION 25, TOWNSHIP 83 NORTH,
RANGE 4 WEST, OF THE FIFTH PRINCIPAL MERIDIAN, JONES COUNTY IOWA.

RECOVERY TIE DRAWING

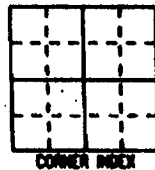
MONUMENT DESCRIPTION AND REMARKS:



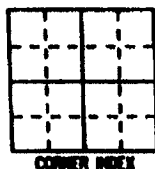
N. 1/4 Corner Section 25-83-4

REASON FOR PREPARING CERTIFICATE: (A, B, C OR D)
PREVIOUS BOOK _____, PAGE _____

FOUND S.C.M. 1/8" NORTH
OF EAST-WEST FENCE.



REASON FOR PREPARING CERTIFICATE: A, B, C OR D
PREVIOUS BOOK _____, PAGE _____



REASON FOR PREPARING CERTIFICATE: A, B, C OR D
PREVIOUS BOOK _____, PAGE _____



I hereby certify that this land surveying document was prepared and the related survey work was performed by me or under my direct personal supervision and that I am a duly licensed Land Surveyor under the laws of the State of Iowa.

Signed: Daniel J. Johnson Date: 8-16-02

Daniel J. Johnson, L.S., 71934
My license renewal date is December 31, 2002

Pages or sheets covered by this book
(Enter submission unless specified here) 1 of 1

REASON FOR PREPARING CERTIFICATE:

- A) THERE IS NO CERTIFICATE FOR THE CORNER ON FILE WITH THE RECORDER OF THE COUNTY IN WHICH THE CORNER IS LOCATED.
- B) CORNER POSITION DIFFERS FROM THAT SHOWN IN THE PUBLIC RECORDS OF THE COUNTY IN WHICH THE CORNER IS LOCATED.
- C) THE CORNER MONUMENT HAS BEEN REPLACED OR MODIFIED.
- D) THE REFERENCE TIES REFERRED TO IN AN EXISTING PUBLIC RECORD ARE INCORRECT OR MISSING.

SHEET NO. _____ U.S. PUBLIC LAND SURVEY CORNER CERTIFICATE

PROJECT NO. Jones County

HALL AND HALL ENGINEERS, INC.
209 29TH STREET N.E.
CEDAR RAPIDS, IOWA 52402
(319) 362-9548

DATE	NO	SCALE	TWP	R	SECTION
5/23/00	NONE		83	4	25