

# THIS IS NOT A CERTIFICATION

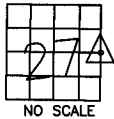
JONES COUNTY ENGINEER'S OFFICE, 19501 HWY. 64, ANAMOSA, IOWA, 52205 (319)462-3785

## UNITED STATES PUBLIC LAND SURVEY CORNER CERTIFICATE

LAND SURVEY MONUMENTS SITUATED IN SECTION 27, TOWNSHIP 83  
NORTH, RANGE 4 WEST OF THE 5TH P.M., JONES COUNTY, IOWA

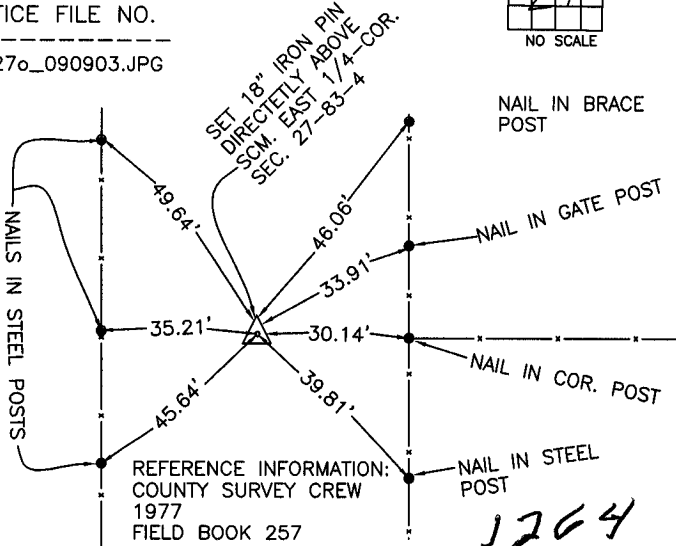
### CORNERS TO BE INDEXED

CORNER SECTION TOWNSHIP RANGE  
E-QUARTER 27 83N 4W



OFFICE FILE NO.

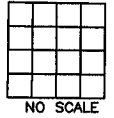
83427o\_090903.JPG



PREVIOUSLY RECORDED IN BOOK \_\_\_\_\_, PAGE \_\_\_\_\_  
FOUND STANDARD CONCRETE 24" BELOW ROAD SURFACE. SET 5/8" X 18" REBAR DIRECTLY ABOVE MONUMENT. SET TIES AS INDICATED. EAST QUARTER OF SECTION 27, TOWNSHIP 83 NORTH, RANGE 4 WEST OF THE 5TH PM, JONES COUNTY, IOWA.

### CORNERS TO BE INDEXED

CORNER SECTION TOWNSHIP RANGE

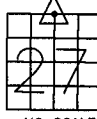


OFFICE FILE NO.

PREVIOUSLY RECORDED IN BOOK \_\_\_\_\_, PAGE \_\_\_\_\_  
MONUMENT DESCRIPTION AND HOW ESTABLISHED \_\_\_\_\_

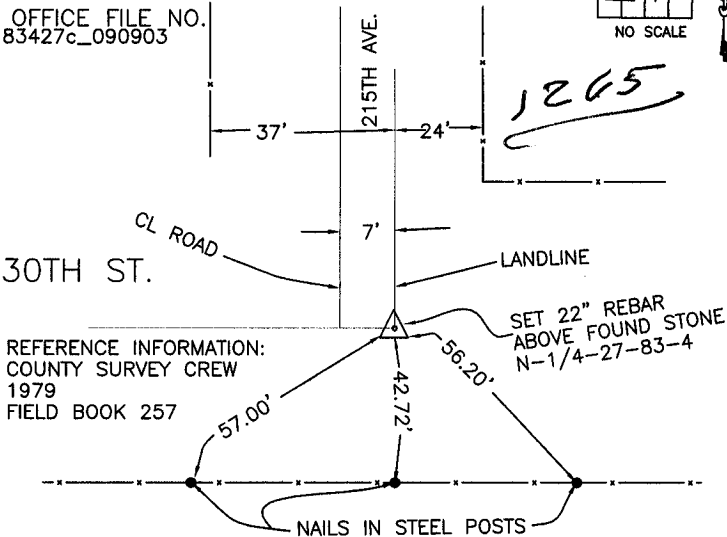
### CORNERS TO BE INDEXED

CORNER SECTION TOWNSHIP RANGE  
N-QUARTER 27 83N 4W



OFFICE FILE NO.

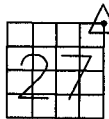
83427c\_090903



PREVIOUSLY RECORDED IN BOOK \_\_\_\_\_, PAGE \_\_\_\_\_  
MONUMENT DESCRIPTION AND HOW ESTABLISHED \_\_\_\_\_  
FOUND LIMESTONE 30" BELOW ROAD SURFACE. SET 22" REBAR DIRECTLY ABOVE STONE AND TIED AS INDICATED, TOP OF PIN 8" BELOW SURFACE. NORTH QUARTER CORNER SECTION 27, TOWNSHIP 83 NORTH, RANGE 4 WEST, JONES COUNTY, IOWA.

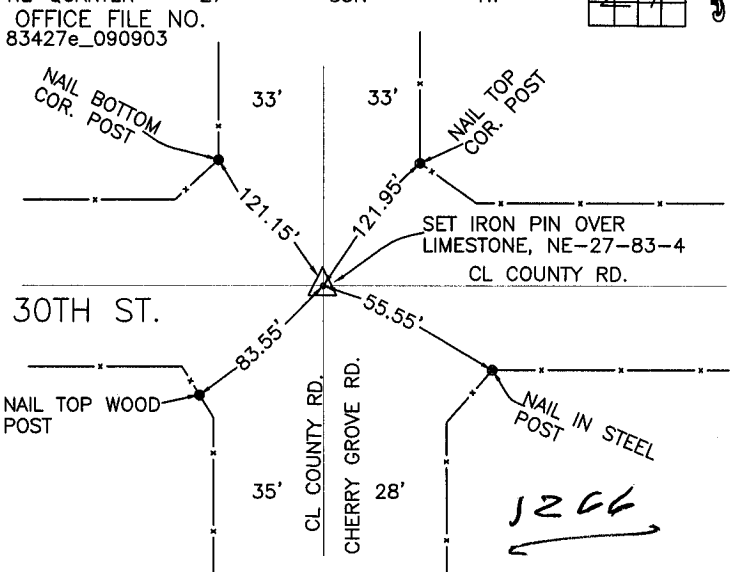
### CORNERS TO BE INDEXED

CORNER SECTION TOWNSHIP RANGE  
NE-QUARTER 27 83N 4W



OFFICE FILE NO.

83427e\_090903



PREVIOUSLY RECORDED IN BOOK \_\_\_\_\_, PAGE \_\_\_\_\_  
MONUMENT DESCRIPTION AND HOW ESTABLISHED \_\_\_\_\_  
SET IRON PIN OVER LIMESTONE, LIMESTONE OVER GAS PIPE. SET TIES AS INDICATED. NORTHEAST CORNER SECTION 27, TOWNSHIP 83 NORTH, RANGE 4 WEST OF THE 5TH PM, JONES COUNTY, IOWA.

~~I hereby declare that this plat, survey or report was made by me or under my direct personal supervision and that I am a duly registered Land Surveyor under the laws of the State of Iowa.~~

Signed: \_\_\_\_\_

SEAL

JONES COUNTY  
ENGINEER'S OFFICE

19501 HWY. 64,  
ANAMOSA, IOWA,  
52205 (319)462-3785