

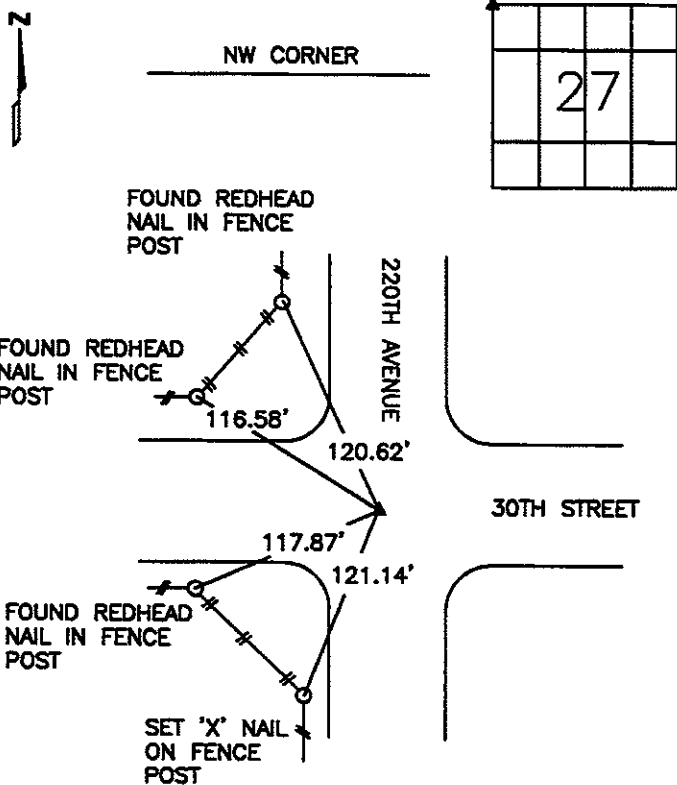
Jones County Marie Krutzfield Recorder  
 Fee Book 2012 3592  
 12/05/2012 @ 10:06AM # Pages 1  
 ZSC SEC COR CERT  
 Total Fees: \$7.00

PREPARED BY  
 STEPHEN MICHAEL BRAIN, BRAIN ENGINEERING, INC., 1540 MIDLAND COURT NE, CEDAR RAPIDS, IOWA PH. (319) 294-9424

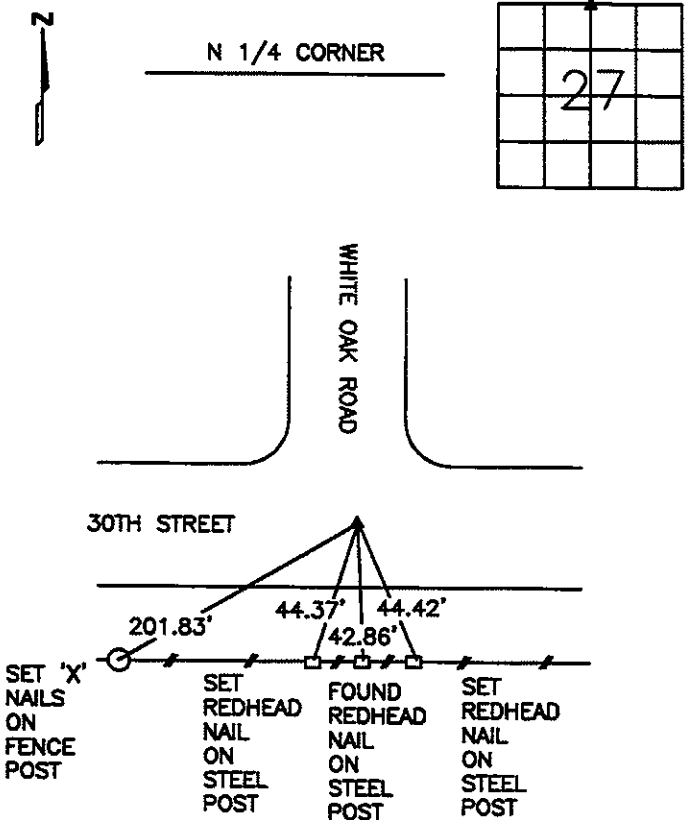
# UNITED STATES PUBLIC LAND SURVEY CORNER CERTIFICATE

LAND SURVEY MONUMENTS SITUATED IN SECTION 27, TOWNSHIP 83 NORTH  
 RANGE 4 WEST OF THE 5TH P.M., JONES COUNTY, IOWA.

NO SCALE



NO SCALE



PREVIOUSLY RECORDED IN BOOK \_\_\_\_\_ PAGE \_\_\_\_\_

MONUMENT DESCRIPTION AND HOW ESTABLISHED \_\_\_\_\_  
 FOUND  $\frac{1}{2}$ " REBAR IN THE CENTERLINES OF 30TH STREET AND 220TH AVENUE, 6" DEEP. REBAR WAS REFERENCED IN PLAT OF SURVEY PARCEL 2002-02 FROM JONES COUNTY RECORDER'S OFFICE PLAT BOOK O PAGE 160.

PREVIOUSLY RECORDED IN BOOK \_\_\_\_\_ PAGE \_\_\_\_\_

MONUMENT DESCRIPTION AND HOW ESTABLISHED \_\_\_\_\_  
 FOUND  $\frac{5}{8}$ " REBAR IN THE CENTERLINES OF 30TH STREET AND WHITE OAK ROAD, 6" DEEP. REBAR WAS REFERENCED IN PLAT OF SURVEY PARCEL 2002-02 FROM JONES COUNTY RECORDER'S OFFICE PLAT BOOK O PAGE 160.



I hereby certify that this land surveying document and the related survey work was performed by me or under my direct personal supervision and that I am a duly licensed Land Surveyor under the laws of the State of Iowa.  
 Signed \_\_\_\_\_ Date 12/3/12

Stephen Michael Brain, L.S.  
 My License Renewal Date is December 31, 2012  
 License Number 9647  
 Pages or sheets covered by this seal: 1/1

- A. THERE IS NO CERTIFICATE FOR THE CORNER ON FILE WITH THE RECORDER OF THE COUNTY IN WHICH THE CORNER IS LOCATED
- B. THE SURVEYOR IN RESPONSIBLE CHARGE OF THE LAND SURVEYING ACCEPTS A CORNER POSITION WHICH DIFFERS FROM THAT SHOWN IN THE PUBLIC RECORDS OF THE COUNTY IN WHICH THE CORNER IS LOCATED.
- C. THE CORNER MONUMENT IS REPLACED OR MODIFIED IN ANY WAY.
- D. THE REFERENCE TIES REFERRED TO IN AN EXISTING PUBLIC RECORD ARE NOT CORRECT.

CORNERS TO BE INDEXED			
CORNER	SECTION	TOWNSHIP	RANGE
NW CORNER	27	T83N	R4 W
N 1/4 CORNER	27	T83N	R4 W

**BRAIN ENGINEERING, INC.**  
 1540 MIDLAND COURT NE  
 CEDAR RAPIDS, IOWA 52402  
 (319) 294-9424

459512-10

fsm3

# THIS IS NOT A CERTIFICATION

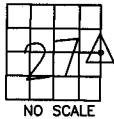
JONES COUNTY ENGINEER'S OFFICE, 19501 HWY. 64, ANAMOSA, IOWA, 52205 (319)462-3785

## UNITED STATES PUBLIC LAND SURVEY CORNER CERTIFICATE

LAND SURVEY MONUMENTS SITUATED IN SECTION 27, TOWNSHIP 83  
NORTH, RANGE 4 WEST OF THE 5TH P.M., JONES COUNTY, IOWA

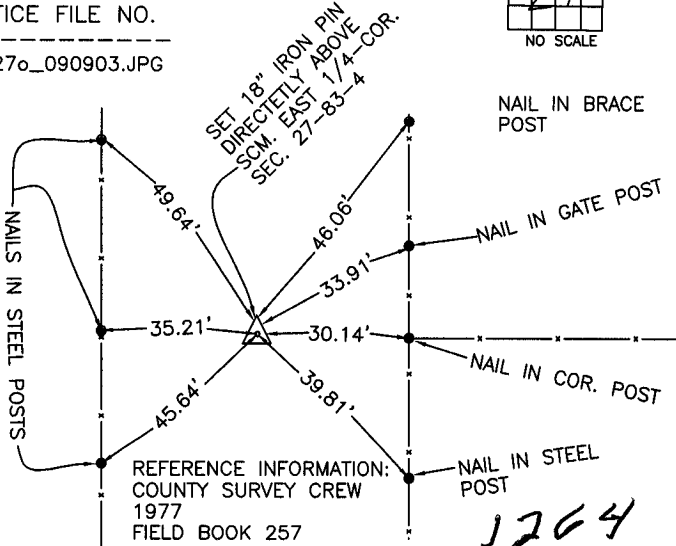
### CORNERS TO BE INDEXED

CORNER SECTION TOWNSHIP RANGE  
E-QUARTER 27 83N 4W



OFFICE FILE NO.

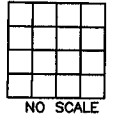
83427o\_090903.JPG



PREVIOUSLY RECORDED IN BOOK \_\_\_\_\_, PAGE \_\_\_\_\_  
FOUND STANDARD CONCRETE 24" BELOW ROAD SURFACE. SET 5/8" X 18" REBAR DIRECTLY ABOVE MONUMENT. SET TIES AS INDICATED. EAST QUARTER OF SECTION 27, TOWNSHIP 83 NORTH, RANGE 4 WEST OF THE 5TH PM, JONES COUNTY, IOWA.

### CORNERS TO BE INDEXED

CORNER SECTION TOWNSHIP RANGE

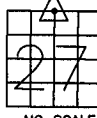


OFFICE FILE NO.

PREVIOUSLY RECORDED IN BOOK \_\_\_\_\_, PAGE \_\_\_\_\_  
MONUMENT DESCRIPTION AND HOW ESTABLISHED \_\_\_\_\_

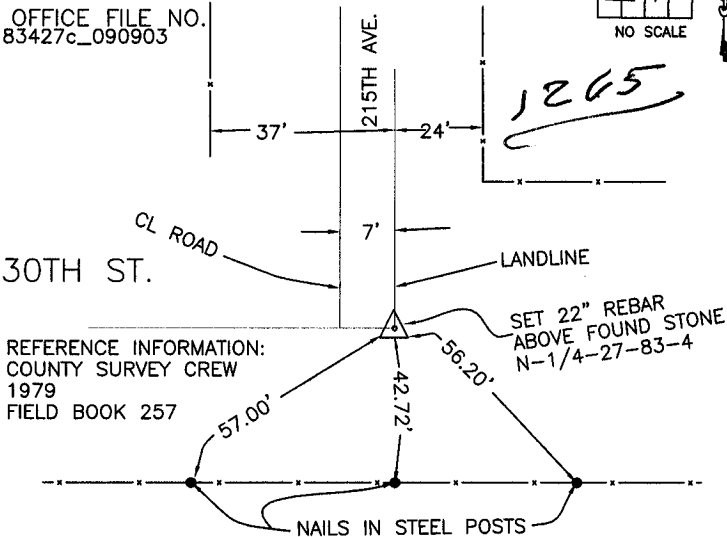
### CORNERS TO BE INDEXED

CORNER SECTION TOWNSHIP RANGE  
N-QUARTER 27 83N 4W



OFFICE FILE NO.

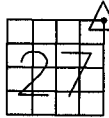
83427c\_090903



PREVIOUSLY RECORDED IN BOOK \_\_\_\_\_, PAGE \_\_\_\_\_  
MONUMENT DESCRIPTION AND HOW ESTABLISHED \_\_\_\_\_  
FOUND LIMESTONE 30" BELOW ROAD SURFACE. SET 22" REBAR DIRECTLY ABOVE STONE AND TIED AS INDICATED, TOP OF PIN 8" BELOW SURFACE. NORTH QUARTER CORNER SECTION 27, TOWNSHIP 83 NORTH, RANGE 4 WEST, JONES COUNTY, IOWA.

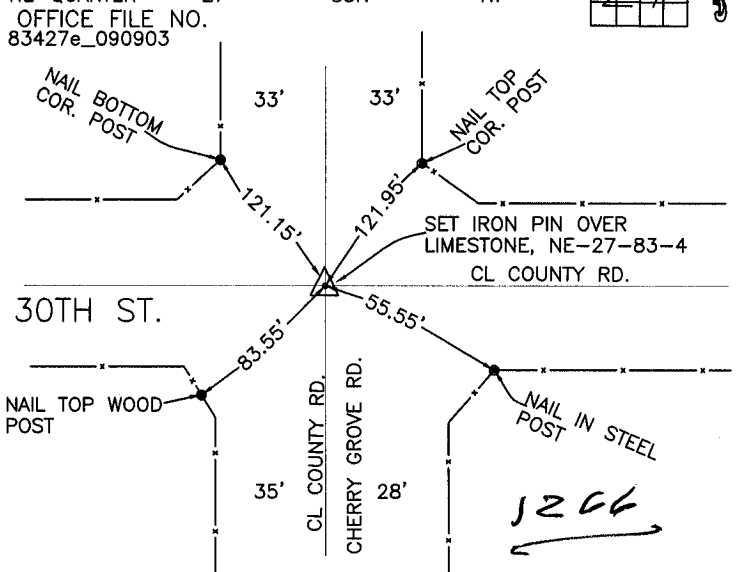
### CORNERS TO BE INDEXED

CORNER SECTION TOWNSHIP RANGE  
NE-QUARTER 27 83N 4W



OFFICE FILE NO.

83427e\_090903



PREVIOUSLY RECORDED IN BOOK \_\_\_\_\_, PAGE \_\_\_\_\_  
MONUMENT DESCRIPTION AND HOW ESTABLISHED \_\_\_\_\_  
SET IRON PIN OVER LIMESTONE, LIMESTONE OVER GAS PIPE. SET TIES AS INDICATED. NORTHEAST CORNER SECTION 27, TOWNSHIP 83 NORTH, RANGE 4 WEST OF THE 5TH PM, JONES COUNTY, IOWA.

~~I hereby declare that this plat, survey or report was made by me or under my direct personal supervision and that I am a duly registered Land Surveyor under the laws of the State of Iowa.~~

Signed: \_\_\_\_\_

SEAL

JONES COUNTY  
ENGINEER'S OFFICE

19501 HWY. 64,  
ANAMOSA, IOWA,  
52205 (319)462-3785