

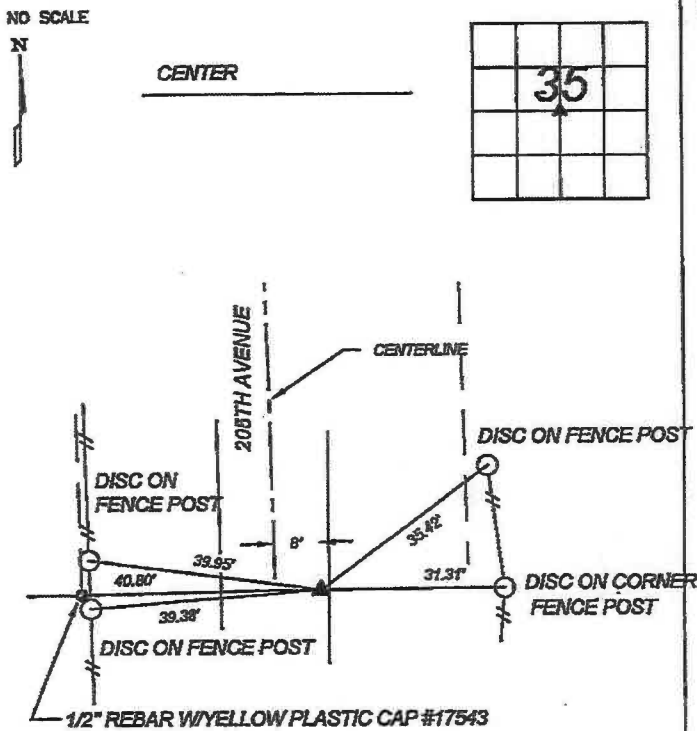
Instrument #: 2024-0036
 01/05/2024 09:22:44 AM Total Pages: 1
 ZSC SECTION CORNER CERTIFICATE
 Recording Fee: \$7.00 Transfer Tax: \$0
 Sheri L. Jones, Recorder, Jones County Iowa



PREPARED BY
 KEVIN F. BRADSHAW, BRAIN ENGINEERING, INC., 1540 MIDLAND COURT NE, CEDAR RAPIDS, IOWA PH. (319) 294-9424

UNITED STATES PUBLIC LAND SURVEY CORNER CERTIFICATE

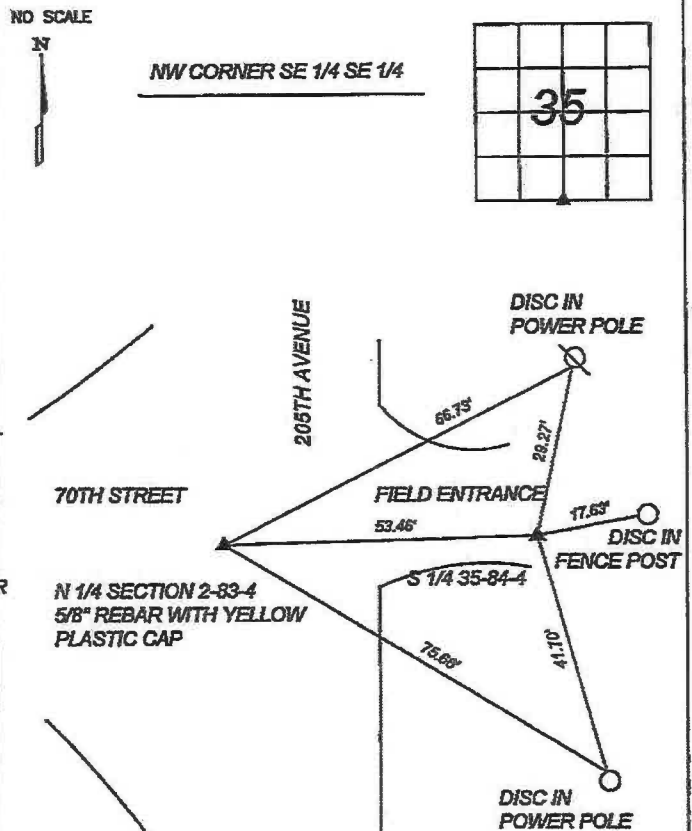
LAND SURVEY MONUMENTS SITUATED IN SECTION 35, TOWNSHIP 84 NORTH
 RANGE 4 WEST OF THE 5TH P.M., JONES COUNTY, IOWA.



PREVIOUSLY RECORDED IN BOOK _____ PAGE _____

MONUMENT DESCRIPTION AND HOW ESTABLISHED _____

SET $\frac{1}{2}$ " REBAR W/ YELLOW PLASTIC CAP #17543 AT INTERSECTION OF THE E 1/4, W 1/4 N 1/4 AND S 1/4 CORNERS OF SECTION 35.



PREVIOUSLY RECORDED IN BOOK 2006 PAGE 3980

MONUMENT DESCRIPTION AND HOW ESTABLISHED _____

SET $\frac{1}{2}$ " REBAR W/ YELLOW PLASTIC CAP #17543 AT DISTANCE NOTED IN ORIGINAL GOVERNMENT PLAT IN LINE WITH SW CORNER OF SECTION 35-84-4 AND N 1/4 CORNER OF SECTION 2-83-4.



I hereby certify that this land surveying document and the related survey work was performed by me or under my direct personal supervision and that I am a duly licensed Land Surveyor under the laws of the State of Iowa.

Signed: *[Signature]* 2-28-23

Kevin F. Bradshaw, L.S.
 My License Renewal Date is December 31, 2024
 License Number 17543
 Pages or sheets covered by this seal: 1/1

- A. THERE IS NO CERTIFICATE FOR THE CORNER ON FILE WITH THE RECORDER OF THE COUNTY IN WHICH THE CORNER IS LOCATED
- B. THE SURVEYOR IN RESPONSIBLE CHARGE OF THE LAND SURVEYING ACCEPTS A CORNER POSITION WHICH DIFFERS FROM THAT SHOWN IN THE PUBLIC RECORDS OF THE COUNTY IN WHICH THE CORNER IS LOCATED.
- C. THE CORNER MONUMENT IS REPLACED OR MODIFIED IN ANY WAY.
- D. THE REFERENCE TIES REFERRED TO IN AN EXISTING PUBLIC RECORD ARE NOT CORRECT.

CORNERS TO BE INDEXED			
CORNER	SECTION	TOWNSHIP	RANGE
CENTER	35	T84N	R4W
S 1/4	35	T84N	R4W

BRAIN ENGINEERING, INC.
 1540 MIDLAND COURT NE
 CEDAR RAPIDS, IOWA 52402
 (319) 294-9424

284923-65

Marie Krutzfield, Recorder
 Jones County, Iowa

J.D. Tjepkes LS, 23428 RIDGE RD. ANAMOSA, IOWA, 52205 (319)462-6067

UNITED STATES PUBLIC LAND SURVEY CORNER CERTIFICATE

LAND SURVEY MONUMENTS SITUATED IN SECTION 2, TOWNSHIP 83
 NORTH, RANGE 4 WEST OF THE 5TH P.M., JONES COUNTY, IOWA

CORNERS TO BE INDEXED

CORNER	SECTION	TOWNSHIP	RANGE
N-QUARTER	2	83N	4W

DATE OF FIELD WORK: SEPTEMBER 2006
 FIELD BOOK: MISC. 2006

PREVIOUSLY RECORDED IN BOOK N/A, PAGE N/A
 MONUMENT DESCRIPTION AND HOW ESTABLISHED SET
 5/8"X24" REBAR W/YELLOW CAP LS 14807 PER TIE INDICATED IN BOOK 175, PAGE 364 (JONES COUNTY EASEMENT) AND JONES COUNTY ROAD CONST. PLANS C-555 (1970). TIES AS INDICATED. NORTH QUARTER COR. SEC. 2-83-4, JONES COUNTY, IOWA.

CORNERS TO BE INDEXED

CORNER	SECTION	TOWNSHIP	RANGE

PREVIOUSLY RECORDED IN BOOK _____, PAGE _____
 MONUMENT DESCRIPTION AND HOW ESTABLISHED _____

CORNERS TO BE INDEXED

CORNER	SECTION	TOWNSHIP	RANGE
NORTHWEST	2	83N	4W

DATE OF FIELD WORK: SEPTEMBER 2006
 FIELD BOOK: MISC. 2006

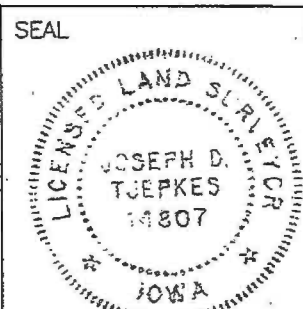
PREVIOUSLY RECORDED IN BOOK N/A, PAGE N/A
 MONUMENT DESCRIPTION AND HOW ESTABLISHED SET
 5/8"X24" REBAR W/YELLOW CAP LS 14807 ON TOWN SHIP LINE 77 LINKS WEST OF FD. 5/8' REBAR AT SW. COR. 35-84-4. SET REFERENCE TIES AS INDICATED. NORTHWEST CORNER SECTION 2, TOWNSHIP 83 NORTH, RANGE 4 WEST OF 5TH PM, JONES COUNTY, IOWA.

LAND OWNER (RUSTY HINRICHSEN) SAID THIS FENCE WAS MOVED ABOUT 40' EAST FROM PRIOR LOCATION. OLD PHOTOS INDICATE FENCE MAY HAVE BEEN MOVED IN PRIOR YEARS. HINRICHSEN OWNS BOTH SIDES OF LAND LINE.

I hereby declare that this plat, survey or report was made by me or under my direct personal supervision and that I am a duly registered Land Surveyor under the laws of the State of Iowa.

Signed: *[Signature]* 10-25-06

Joseph D. Tjepkes L.S. Iowa Reg. No. 14807
 My Registration Renewal Date is December 31, 2006



J.D. TJEPKES LS 14807
 23428 RIDGE ROAD
 ANAMOSA, IOWA 52205