

Jones County
 Marie Krutzfield, Recorder
Fee Book 2010 1335

05/24/2010 @0158PM
 ZSC SEC COR CERT
 Book: Page: # Pages: 1
 Total Fees: \$9.00

PREPARED BY: SCOTT SURVEY, INC. P.O. BOX 315 CENTER POINT IOWA 52213 319-540-5263

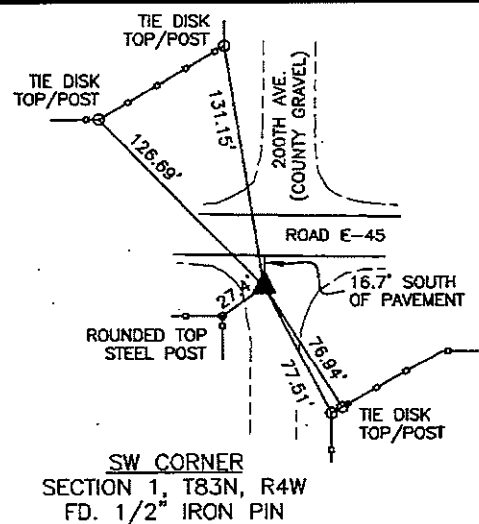
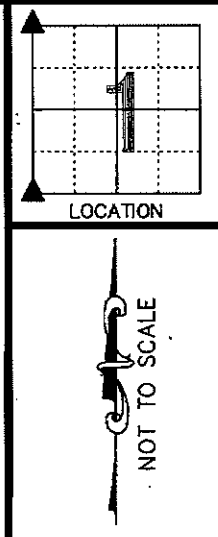
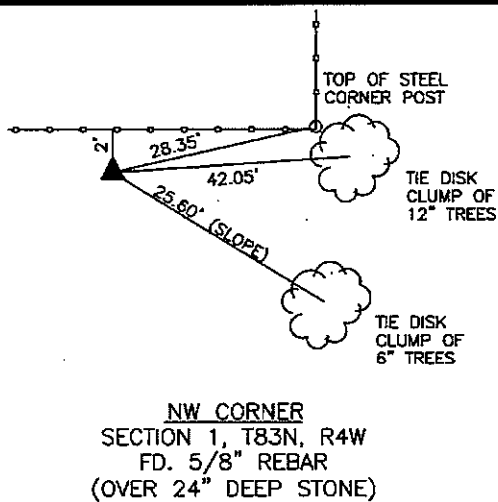
U.S. PUBLIC LAND SURVEY CORNER CERTIFICATE

FOR LAND SURVEY MONUMENTS SITUATED IN SECTION 1, TOWNSHIP 83 NORTH, RANGE 4 WEST, OF THE FIFTH PRINCIPAL MERIDIAN, JONES COUNTY, IOWA

REASON FOR PREPARING CERTIFICATE:

- A) THERE IS NO CERTIFICATE FOR THE CORNER ON FILE WITH THE RECORDER.
 B) CORNER TIES DIFFER FROM PREVIOUSLY RECORDED CERTIFICATE.

RECOVERY TIE DRAWING

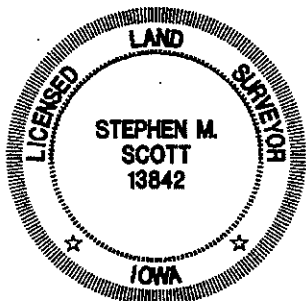


MONUMENT DESCRIPTION AND REMARKS :

FOUND MONUMENT BASED ON CORNER TIES FOUND IN THE OFFICE OF THE ENGINEER, JONES COUNTY, IOWA. NOTES SAY THAT A LIMESTONE WAS FOUND AND LOWERED. SCM PLACED OVER TOP. IT APPEARS THAT GRADING AND DEMOLITION OF WINDMILL HAVE REMOVED SCM.

MONUMENT DESCRIPTION AND REMARKS :

FOUND MONUMENT ACCORDING TO CORNER TIES FOUND IN THE OFFICE OF THE ENGINEER, JONES COUNTY, IOWA.



I hereby certify that this land surveying document was prepared and the related survey work was performed by me or under my direct personal supervision and that I am a duly licensed Land Surveyor under the laws of the State of Iowa.

Stephen M. Scott
 _____, 2010
 STEPHEN M. SCOTT, L.S. Iowa Lic. No. 13842
 My license renewal date is December 31, 2010.

- LEGEND**
- △ GOVERNMENT CORNER
 - 1/2" TIE PIN SET
 - CENTERLINE
 - EXISTING FENCE LINE
 - - - R.O.W. LINE

U.S. PUBLIC LAND SURVEY CORNER CERTIFICATE

SECTION 1, T83N, R4W
 NW CORNER
 SW CORNER

PROJECT NO.
 1015501

#1200

THIS IS NOT A CERTIFICATION.

JONES COUNTY ENGINEER'S OFFICE, 19501 HWY. 64, ANAMOSA, IOWA, 52205 (319)462-3785

UNITED STATES PUBLIC LAND SURVEY CORNER CERTIFICATE

LAND SURVEY MONUMENTS SITUATED IN SECTION 2, TOWNSHIP 83 NORTH, RANGE 4 WEST OF THE 5TH P.M., JONES COUNTY, IOWA

CORNERS TO BE INDEXED

CORNER	SECTION	TOWNSHIP	RANGE
NORTHEAST	2	83N	4W

OFFICE FILE NO. _____

83402e_080703.jpg

KIRCHOFF-1936:
FD. LIMESTONE, LOWERED AND SET SCM ON TOP FLUSH WITH GROUND.
NORTHEAST CORNER SECTION 2, T83N, R4W, JONES COUNTY, IOWA.

200TH AVENUE

PREVIOUSLY RECORDED IN BOOK _____, PAGE _____
MONUMENT DESCRIPTION AND HOW ESTABLISHED _____

COUNTY CREW IN 1936 FOUND LIMESTONE, LOWERED AND SET STANDARD CONCRETE MONUMENT ON TOP.

CORNERS TO BE INDEXED

CORNER	SECTION	TOWNSHIP	RANGE

OFFICE FILE NO. _____

PREVIOUSLY RECORDED IN BOOK _____, PAGE _____
MONUMENT DESCRIPTION AND HOW ESTABLISHED _____

CORNERS TO BE INDEXED

CORNER	SECTION	TOWNSHIP	RANGE

OFFICE FILE NO. _____

PREVIOUSLY RECORDED IN BOOK _____, PAGE _____
MONUMENT DESCRIPTION AND HOW ESTABLISHED _____

CORNERS TO BE INDEXED

CORNER	SECTION	TOWNSHIP	RANGE

OFFICE FILE NO. _____

PREVIOUSLY RECORDED IN BOOK _____, PAGE _____
MONUMENT DESCRIPTION AND HOW ESTABLISHED _____

~~I hereby declare that this plat, survey or report was made by me or under my direct personal supervision and that I am a duly registered Land Surveyor under the laws of the State of Iowa.~~

Signed: _____

SEAL

JONES COUNTY ENGINEER'S OFFICE

19501 HWY. 64,
ANAMOSA, IOWA,
52205 (319)462-3785