

Marie Krutzfield, Recorder
 Jones County, Iowa

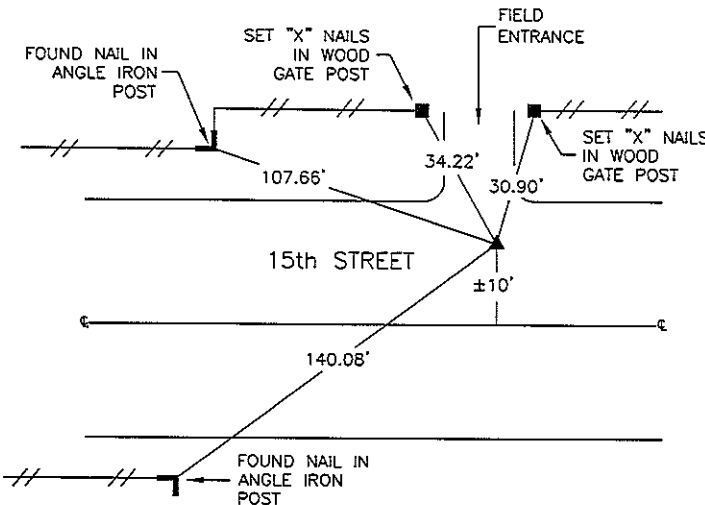
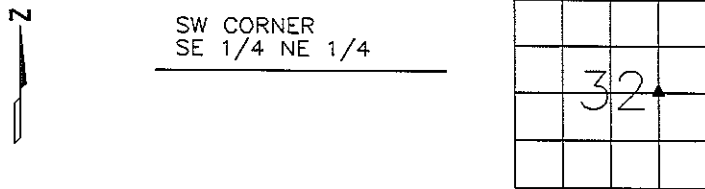
PREPAREL

STEPHEN MICHAEL BRAIN, BRAIN ENGINEERING, INC., 1540 MIDLAND COURT NE, CEDAR RAPIDS, IOWA PH. (319) 294-9424

UNITED STATES PUBLIC LAND SURVEY CORNER CERTIFICATE

LAND SURVEY MONUMENTS SITUATED IN SECTION 32, TOWNSHIP 83 NORTH
 RANGE 4 WEST OF THE 5TH P.M., JONES COUNTY, IOWA.

NO SCALE



RCP-RED PLASTIC CAP

PREVIOUSLY RECORDED IN BOOK _____ PAGE _____

MONUMENT DESCRIPTION AND HOW ESTABLISHED _____

FOUND 1/2" REBAR W/ RPC #11954 PER PLAT OF SURVEY RECORDED IN
 RECORDER'S DOCUMENT #98 99 1986 IN THE JONES COUNTY, IOWA

RECORDER'S OFFICE.



I hereby certify that this land surveying document and the related survey work was performed by me or under my direct personal supervision and that I am a duly licensed Land Surveyor under the laws of the State of Iowa.
 Signed *Stephen Michael Brain* Date 10/13/06
 Stephen Michael Brain, L.S.
 My License Renewal Date Is December 31, 2006
 License Number 9647
 Pages or sheets covered by this seal: 1/1

CORNERS TO BE INDEXED			
CORNER	SECTION	TOWNSHIP	RANGE
SW SE 1/4	32	T83N	R4W
NE 1/4			

NO SCALE



PREVIOUSLY RECORDED IN BOOK _____ PAGE _____

MONUMENT DESCRIPTION AND HOW ESTABLISHED _____

- A.THERE IS NO CERTIFICATE FOR THE CORNER ON FILE WITH THE RECORDER OF THE COUNTY IN WHICH THE CORNER IS LOCATED
- B.THE SURVEYOR IN RESPONSIBLE CHARGE OF THE LAND SURVEYING ACCEPTS A CORNER POSITION WHICH DIFFERS FROM THAT SHOWN IN THE PUBLIC RECORDS OF THE COUNTY IN WHICH THE CORNER IS LOCATED.
- C.THE CORNER MONUMENT IS REPLACED OR MODIFIED IN ANY WAY.
- D.THE REFERENCE TIES REFERRED TO IN AN EXISTING PUBLIC RECORD ARE NOT CORRECT.

BRAIN ENGINEERING, INC.
 1540 MIDLAND COURT NE
 CEDAR RAPIDS, IOWA 52402
 (319) 294-9424

364106-10

2003 1079

FILED
RECORDERS OFFICE
JONES COUNTY IOWA

03 MAR 13 PM 1:25

MARIE KRUTZFIELD 6.00Pd
RECORDER

PREPARED BY HALL & HALL ENGINEERS, INC. 209 28TH STREET N.E. CEDAR RAPIDS, IOWA 52402 (319) 382-8548

SECTION CORNER CERTIFICATE

OF
LAND SURVEY MONUMENTS SITUATED IN SECTION 32, TOWNSHIP 83 NORTH,
RANGE 4 WEST, OF THE FIFTH PRINCIPAL MERIDIAN, JONES COUNTY, IOWA.

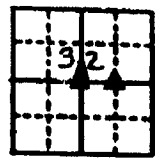
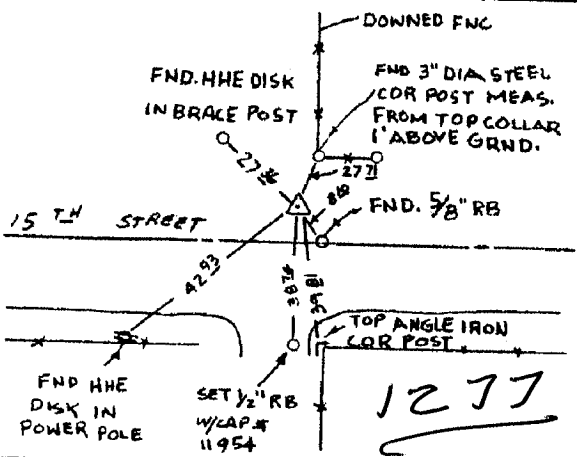
PREVIOUSLY RECORDED IN BOOK _____ AT PAGE _____

MONUMENT DESCRIPTION AND REMARKS:

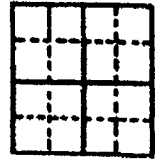
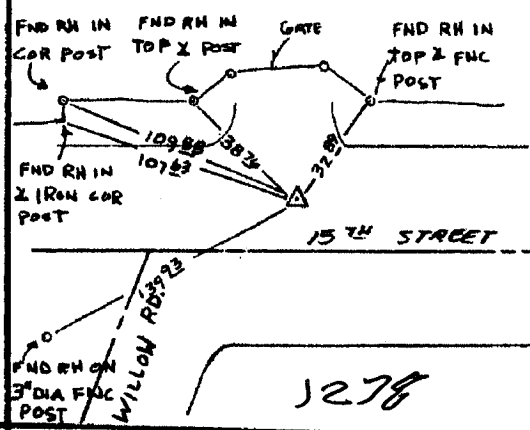
CENTER SEC. 32-83-4, SET 1/2" REBAR W/CAP # 11954 03 DEEP 6± N OF E &
6± W OF FNC N & S
NE COR NW 1/4 SE 1/4 SEC 32-83-4, SET 1/2" RB W/CAP # 11954 03 DEEP
2' S. OF N EDGE GRAVEL

RECOVERY TIE DRAWING

CENTER SEC 32-83-4



NE COR NW 1/4 SE 1/4 32-83-4



B3432h-022703

B3432h-022703



I hereby certify that this land surveying document was prepared and the related survey work was performed by me or under my direct personal supervision and that I am a duly licensed Land Surveyor under the laws of the State of Iowa.
Signed: *Daniel J. Johnson* Date: 2-27-03
Daniel J. Johnson, L.S. #11054
My license renewed 1/6 to December 31, 2004
Pages or sheets covered by this cost: 1
(Entire submission unless specified here)

- REASON FOR PREPARING CERTIFICATE:
- A) THERE IS NO CERTIFICATE FOR THE CORNER ON FILE WITH THE RECORDER OF THE COUNTY IN WHICH THE CORNER IS LOCATED
 - B) CORNER POSITION DIFFERS FROM THAT SHOWN IN THE PUBLIC RECORDS OF THE COUNTY IN WHICH THE CORNER IS LOCATED.
 - C) THE CORNER MONUMENT HAS BEEN REPLACED OR MODIFIED
 - D) THE REFERENCE TIES REFERRED TO IN AN EXISTING PUBLIC RECORD ARE INCORRECT

GOVERNMENT CORNER PROPERTY CORNER IOWA 1/2" 150' W/ LS CAP SET EXISTING FENCE LINE PROPERTY LINE	US PUBLIC LAND SURVEY RECORD YOUNGBLUT, WAYNE	HALL AND HALL ENGINEERS, INC. 209 28TH STREET N.E. CEDAR RAPIDS, IOWA 52402 (319) 382-8548
SCALE: NTS	DATE: 12/29/1998	PROJECT: 0T51
BY: Gill	DATE: 12/29/1998	PROJECT: 6549