

2004 0121

FILED
RECORDERS OFFICE
JONES COUNTY IOWA

04 JAN 12 PM 2:02

MARIE KRUTZFIELD
RECORDER *NO Fee*

J.D. TJEPKES, LS. JONES COUNTY ENGINEER'S OFFICE, 19501 HWY. 64, ANAMOSA, IOWA, 52205 (319)462-3785

UNITED STATES PUBLIC LAND SURVEY CORNER CERTIFICATE

LAND SURVEY MONUMENTS SITUATED IN SECTION 32, TOWNSHIP 83
NORTH, RANGE 4 WEST OF THE 5TH P.M., JONES COUNTY, IOWA

CORNERS TO BE INDEXED

CORNER	SECTION	TOWNSHIP	RANGE
S1/4	32	83N	4W

OFFICE FILE NO. 83432w_120403.jpg

FIELD WORK DONE 12-04-2003
FIELD NOTES: MISC.BK 1978-1979 P60 MISC BK 2000-2001 P79

PREVIOUSLY RECORDED IN BOOK 324, PAGE 257
MONUMENT DESCRIPTION AND HOW ESTABLISHED _____
PER FOUND TIES, AS RECORDED IN BK 324 P 257 AT RECORDER'S OFFICE, FOUND CONCRETE MONUMENT FLUSH WITH GROUND. SET SMALL JONES COUNTY SIGN ON WEST EDGE OF MONUMENT AND TIED AS INDICATED. S- $\frac{1}{4}$ SECTION 32, TOWNSHIP 83 NORTH, RANGE 4 WEST, JONES COUNTY, IOWA.

CORNERS TO BE INDEXED

CORNER	SECTION	TOWNSHIP	RANGE

OFFICE FILE NO. _____

PREVIOUSLY RECORDED IN BOOK _____, PAGE _____
MONUMENT DESCRIPTION AND HOW ESTABLISHED _____

CORNERS TO BE INDEXED

CORNER	SECTION	TOWNSHIP	RANGE

OFFICE FILE NO. _____

PREVIOUSLY RECORDED IN BOOK _____, PAGE _____
MONUMENT DESCRIPTION AND HOW ESTABLISHED _____

CORNERS TO BE INDEXED

CORNER	SECTION	TOWNSHIP	RANGE

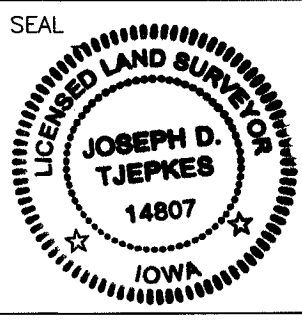
OFFICE FILE NO. _____

PREVIOUSLY RECORDED IN BOOK _____, PAGE _____
MONUMENT DESCRIPTION AND HOW ESTABLISHED _____

I hereby declare that this plat, survey or report was made by me or under my direct personal supervision and that I am a duly registered Land Surveyor under the laws of the State of Iowa.

Signed: 1.07.04

Joseph D. Tjepkes L.S. Iowa Reg. No. 14807
My Registration Renewal Date is December 31, 2004



J.D. TJEPKES LS 14807
JONES COUNTY
ENGINEER'S OFFICE

19501 HWY. 64,
ANAMOSA, IOWA,
52205 (319)462-3785

UNITED STATES PUBLIC LAND SURVEY CORNER CERTIFICATE

OF

Land Survey Monuments situated in Section 32, Township 83 North, Range 4 West, of the Fifth Principal Meridian, Jones County, Iowa.
Previously recorded in no corner certificate on file in County Recorder's Office.

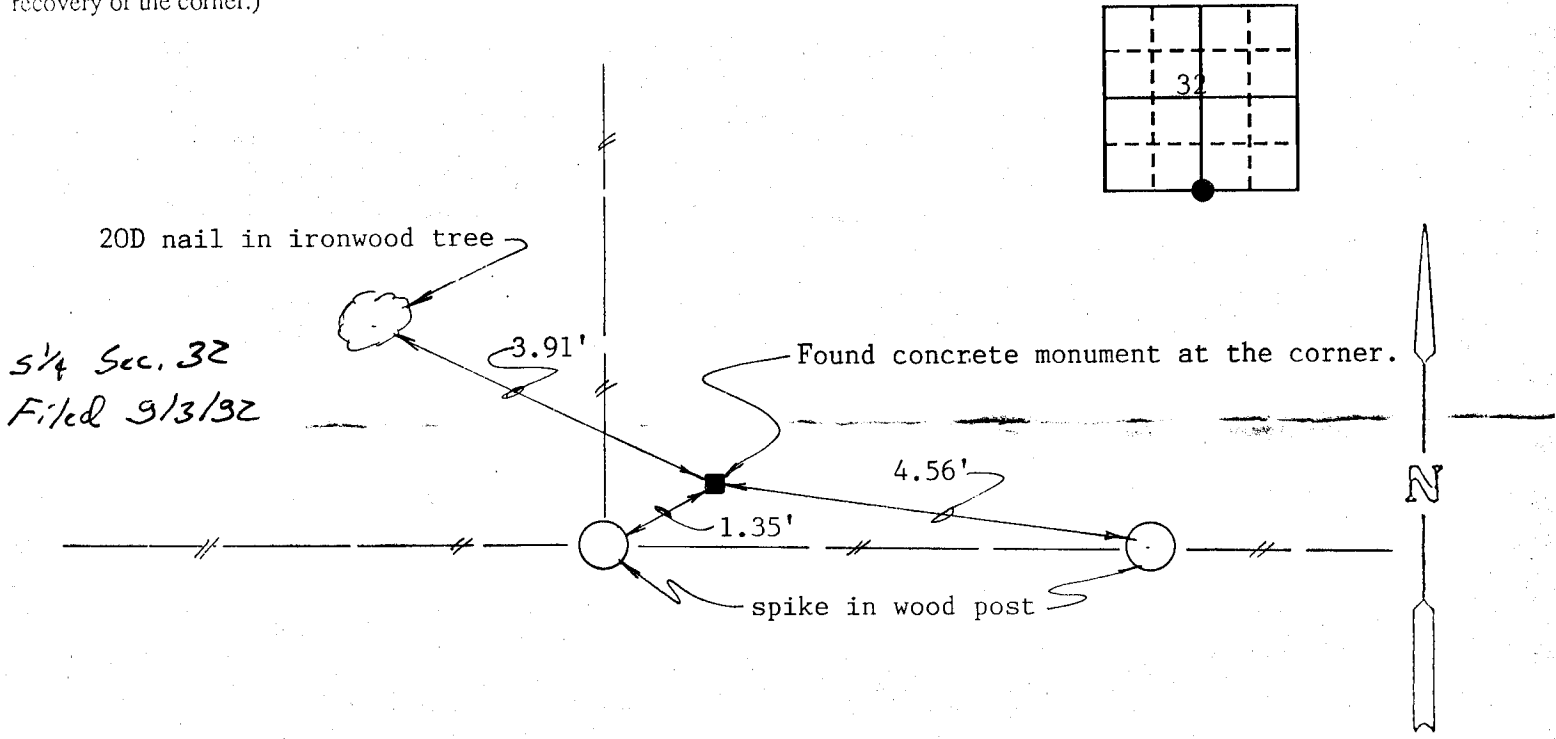
(book, page, document number, etc.)

(Show reason for preparing this certificate, the evidence and detailed procedures used in establishing the corner positions and monumentation found or placed.)

Monument Description and Remarks: Found concrete monument at the corner.

PLAN - VIEW

(Show a minimum of three reference ties to durable physical objects, relevant monuments and physical conditions that will enable recovery of the corner.)

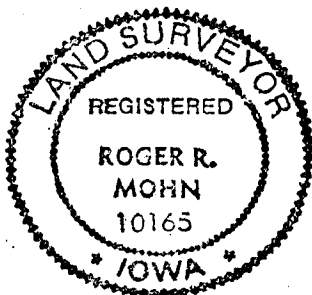


I hereby certify that the survey work was completed and this certificate was prepared by me or under my direct personal supervision and that I am a duly registered land surveyor under the laws of the state of Iowa.

Signature: Roger R. Mohn
Name typed or printed: Roger R. Mohn

Date: August 22, 1992 Reg. No. 10165

SEAL



Corners	List Corners to be Indexed		
	Section	Twp	Range
S ¹ / ₄ Cor.	32	83N	4W

83432W-082292