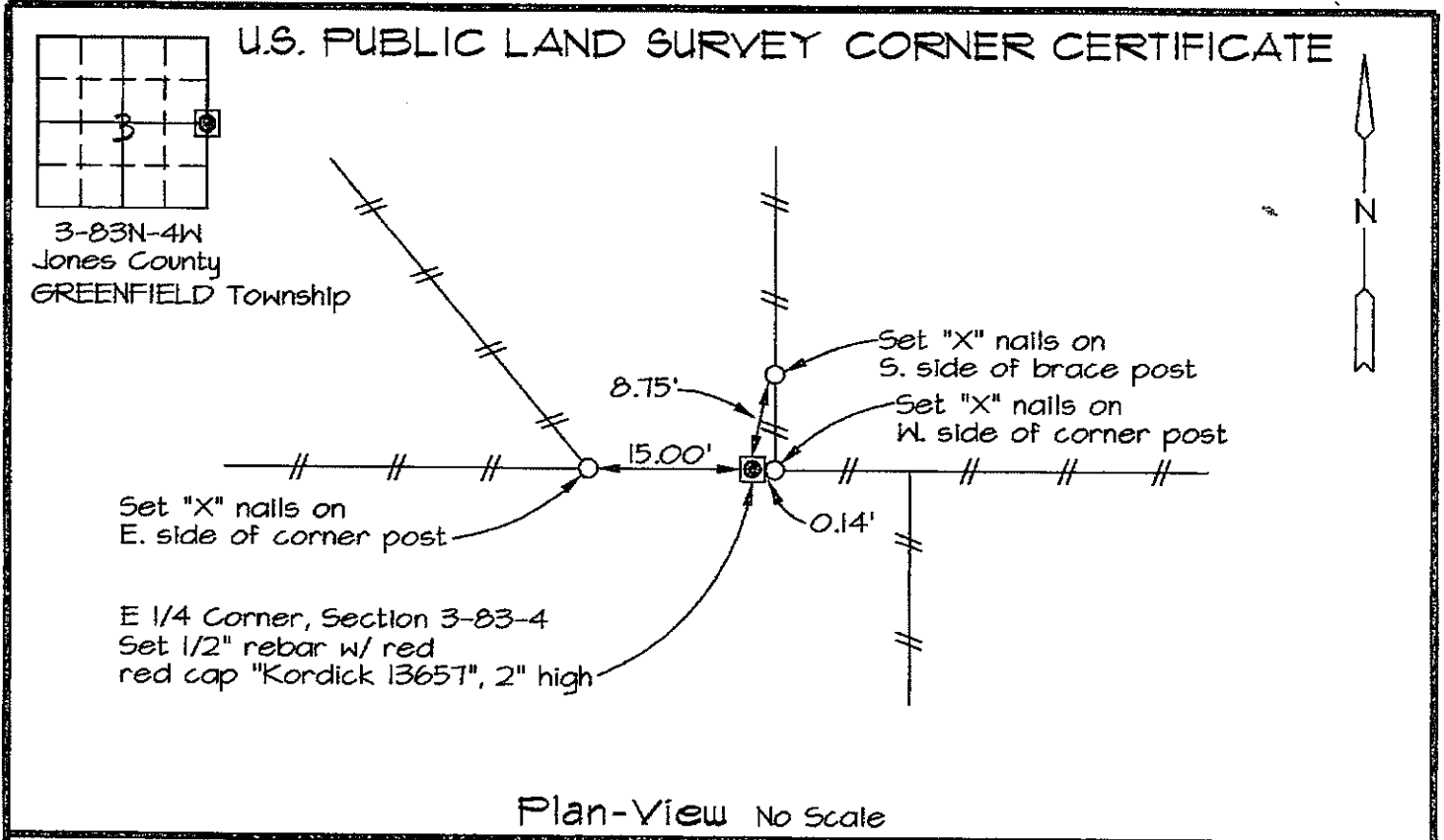


MARIE KRUTZFIELD, RECORDER
 JONES COUNTY, IOWA

Prepared by: Richard M. Kordick, P.E., L.S., 120 East Main, Suite D, Anamosa, IA 52205 Phone: (319) 462-4498



Section corner location: E 1/4 Corner, Section 3-83-4

Reason for corner tie:

- A) There is no certificate for the corner on file with the recorder.
- B) Corner position differs from previously recorded certificate recorded in book , page
- C) Corner monument was replaced or modified.
- D) Reference ties in previously recorded certificate recorded in book , page are incorrect or missing.

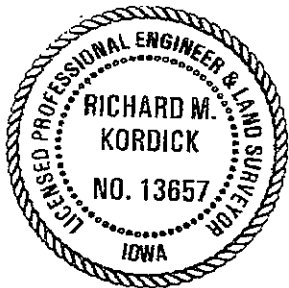
Research at the recorder's office, auditor's office, and engineer's office revealed the following: Old county Engineer's Office corner ties called for a "Fd. 8"x16" limestone standing on end against corner fence post. Lowered stone to 3' below surface, set S.C.M. directly above-1939".

Field search performed was as follows:

Field search was performed with a metal detector, probing and excavation. Nothing was found.

Monument found or set:

The Corner was determined to be obliterated. A 1/2" rebar with red cap "Kordick 13657" was set using evidence from the existing fences, the old county corner tie, and the 1940 aerial.



I hereby certify that this land surveying document was prepared and the related survey work was performed by me or under my direct personal supervision and that I am a duly licensed Land Surveyor under the laws of the State of Iowa.

Richard M. Kordick 9/28/2006
 Richard M. Kordick date
 License number 13657
 My license renewal date is December 31, 2007.
 Pages or sheets covered by this seal: 1 of 1

LEGEND:

- Section Corner as noted
- Power Pole
- Section line
- Centerline
- ||| Existing Fence
- () Recorded Dist.

Kordick Surveying & Engineering
 120 East Main, Suite D
 Anamosa, Iowa 52205
 (319) 462-4498

U.S. Public Land
 Survey Corner Certificate

Project: Plat of Survey
 Parcel No. 2006-138
 Proprietor: Niehaus Long View Farms Corporation

Field BK
 06083
 Date
 9-28-06
 Job No.
 06083
 Sheet
 1 of 1

THIS IS NOT A CERTIFICATION.

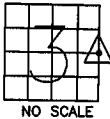
JONES COUNTY ENGINEER'S OFFICE, 19501 HWY. 64, ANAMOSA, IOWA, 52205 (319)462-3785

UNITED STATES PUBLIC LAND SURVEY CORNER CERTIFICATE

LAND SURVEY MONUMENTS SITUATED IN SECTION 3, TOWNSHIP 83 NORTH, RANGE 4 WEST OF THE 5TH P.M., JONES COUNTY, IOWA

CORNERS TO BE INDEXED

CORNER SECTION TOWNSHIP RANGE
E-QUARTER 3 83N 4W



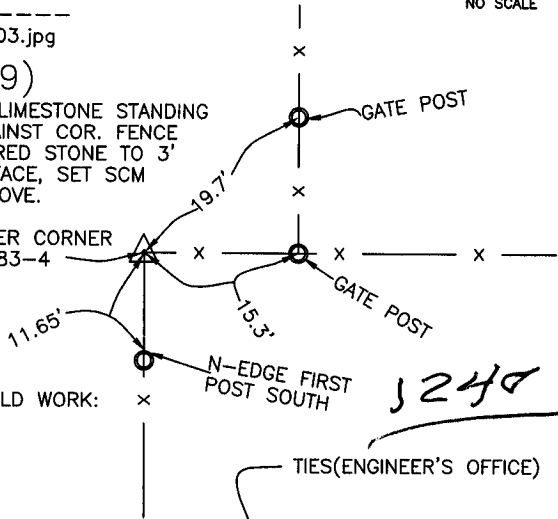
OFFICE FILE NO.

83403o_080703.jpg

(1939)

FD. 8"X16" LIMESTONE STANDING ON END AGAINST COR. FENCE POST. LOWERED STONE TO 3' BELOW SURFACE, SET SCM DIRECTLY ABOVE.

EAST QUARTER CORNER SECTION 3-83-4



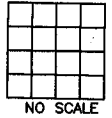
DATE OF FIELD WORK: 1939

PREVIOUSLY RECORDED IN BOOK _____, PAGE _____
MONUMENT DESCRIPTION AND HOW ESTABLISHED _____

JONES COUNTY SURVEY CREW SET STANDARD CONCRETE MONUMENT OVER STONE IN 1939.

CORNERS TO BE INDEXED

CORNER SECTION TOWNSHIP RANGE

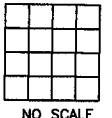


OFFICE FILE NO.

PREVIOUSLY RECORDED IN BOOK _____, PAGE _____
MONUMENT DESCRIPTION AND HOW ESTABLISHED _____

CORNERS TO BE INDEXED

CORNER SECTION TOWNSHIP RANGE

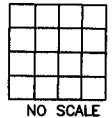


OFFICE FILE NO.

PREVIOUSLY RECORDED IN BOOK _____, PAGE _____
MONUMENT DESCRIPTION AND HOW ESTABLISHED _____

CORNERS TO BE INDEXED

CORNER SECTION TOWNSHIP RANGE



OFFICE FILE NO.

PREVIOUSLY RECORDED IN BOOK _____, PAGE _____
MONUMENT DESCRIPTION AND HOW ESTABLISHED _____

~~I hereby declare that this plat, survey or report was made by me or under my direct personal supervision and that I am a duly registered Land Surveyor under the laws of the State of Iowa.~~

Signed: _____

SEAL

JONES COUNTY ENGINEER'S OFFICE

19501 HWY. 64,
ANAMOSA, IOWA,
52205 (319)462-3785