

THIS IS NOT A CERTIFICATION

JONES COUNTY ENGINEER'S OFFICE, 19501 HWY. 64, ANAMOSA, IOWA, 52205 (319)462-3785

UNITED STATES PUBLIC LAND SURVEY CORNER CERTIFICATE

LAND SURVEY MONUMENTS SITUATED IN SECTION 32, TOWNSHIP 84
NORTH, RANGE 4 WEST OF THE 5TH P.M., JONES COUNTY, IOWA

CORNERS TO BE INDEXED

CORNER	SECTION	TOWNSHIP	RANGE
S-QUARTER	32	84N	4W

OFFICE FILE NO. _____
84432w_061204.tif

REF:
JONES COUNTY BENCH MARKS
AND SECTION COR. TIES
BOOK 3 (1936)

70TH STREET

OLD HEDGE

FENCE COR. 1691 ✓

FD. ORIGINAL STONE
S-1/4-32-84-4

FENCE COR.

LANE

GATE COR. POST

PREVIOUSLY RECORDED IN BOOK _____, PAGE _____
MONUMENT DESCRIPTION AND HOW ESTABLISHED FOUND
16"x16"x24" ORIGINAL STONE 14" BELOW SURFACE, LOWERED, SET
STANDARD CONCRETE MONUMENT ABOVE WITH TOP OF STONE 14"
BELOW ROAD BED. SET TIE AS INDICATED. SOUTH QUARTER CORNER
SECTION 32, TOWNSHIP 84 NORTH, RANGE 4 WEST, 5TH PRINCIPAL
MERIDIAN, JONES COUNTY, IOWA.

CORNERS TO BE INDEXED

CORNER	SECTION	TOWNSHIP	RANGE

OFFICE FILE NO. _____

PREVIOUSLY RECORDED IN BOOK _____, PAGE _____
MONUMENT DESCRIPTION AND HOW ESTABLISHED

CORNERS TO BE INDEXED

CORNER	SECTION	TOWNSHIP	RANGE

OFFICE FILE NO. _____

PREVIOUSLY RECORDED IN BOOK _____, PAGE _____
MONUMENT DESCRIPTION AND HOW ESTABLISHED

CORNERS TO BE INDEXED

CORNER	SECTION	TOWNSHIP	RANGE

OFFICE FILE NO. _____

PREVIOUSLY RECORDED IN BOOK _____, PAGE _____
MONUMENT DESCRIPTION AND HOW ESTABLISHED

~~I hereby declare that this plat, survey or report was made by me or under my direct personal supervision and that I am a duly registered Land Surveyor under the laws of the State of Iowa.~~

Signed: _____

SEAL

JONES COUNTY
ENGINEER'S OFFICE

19501 HWY. 64,
ANAMOSA, IOWA,
52205 (319)462-3785

Z

PREPARED BY HALL & HALL ENGINEERS, INC. 209 29TH STREET N.E. CEDAR RAPIDS, IOWA 52402 (319) 362-9548

SECTION CORNER CERTIFICATE

OF

LAND SURVEY MONUMENTS SITUATED IN SECTION 5, TOWNSHIP 03 NORTH, RANGE 4 WEST, OF THE FIFTH PRINCIPAL MERIDIAN, JONES, COUNTY, IOWA.

PREVIOUSLY RECORDED IN BOOK AT PAGE

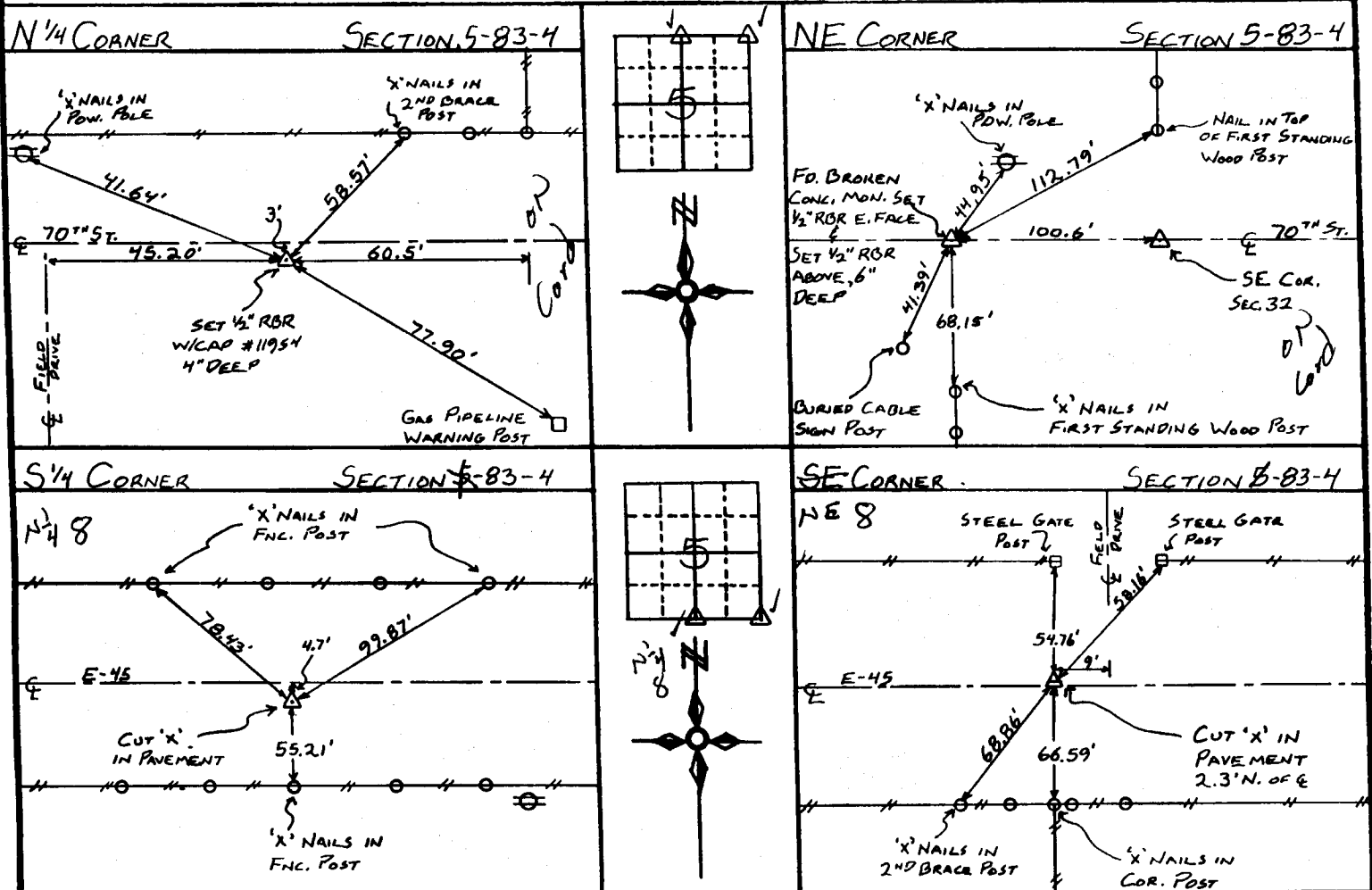
REASON FOR PREPARING CERTIFICATE:

- A) THERE IS NO CERTIFICATE FOR THE CORNER ON FILE WITH THE RECORDER OF THE COUNTY IN WHICH THE CORNER IS LOCATED.
- B) CORNER POSITION DIFFERS FROM THAT SHOWN IN THE PUBLIC RECORDS OF THE COUNTY IN WHICH THE CORNER IS LOCATED.
- C) THE CORNER MONUMENT HAS BEEN REPLACED OR MODIFIED
- D) THE REFERENCE TIES REFERRED TO IN AN EXISTING PUBLIC RECORD ARE INCORRECT

MONUMENT DESCRIPTION AND REMARKS:

- N¹/₄ COR. SEC. 5-83-4: SET 1/2" REBAR W/ CAP #11954 4" DEEP, 3' SOUTH OF E 70TH ST.
- NE COR. SEC. 5-83-4: FOUND BROKEN CONG. MONUMENT SET 1/2" REBAR AT EAST FACE & 1/2" REBAR ABOVE 6" DEEP
- S¹/₄ COR. SEC. 5-83-4: CUT 'X' IN PAVEMENT 4.7' SOUTH OF E E-45
- SE COR. SEC. 5-83-4: CUT 'X' IN PAVEMENT 2.3' NORTH OF E E-45

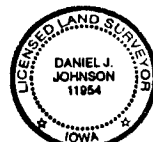
RECOVERY TIE DRAWING



I, DANIEL J. JOHNSON, - CERTIFY THAT THE CORNER LOCATION(S) SHOWN ON THIS RECORD WERE DETERMINED BY ME OR UNDER MY DIRECTION AND CONTROL AND THAT THIS U S PUBLIC LAND SURVEY MONUMENT RECORD IS CORRECT AND COMPLETE TO THE BEST OF MY KNOWLEDGE AND BELIEF.

Daniel J. Johnson 10-27-97
 DANIEL J. JOHNSON L.S. NO. 11954 DATE

Greenfield



83405e-102797
 83405e-102797
 83408e-102797 83408e-102797

MY LICENSE RENEWAL DATE IS DECEMBER 31, 1998

LEGEND: Δ GOVERNMENT CORNER ● PROPERTY CORNER FOUND ○ 1/2" X 3/4" W/ L.S. CAP SET --- EXISTING FENCE LINE ——— PROPERTY LINE	SHEET TITLE: U.S. PUBLIC LAND SURVEY RECORD PROJECT TITLE: ARMSTRONG - BOUNDARY	HALL AND HALL ENGINEERS, INC. 209 29TH STREET N.E. CEDAR RAPIDS, IOWA 52402 (319) 362-9548
	SCALE: 1" = 40' DATE: 11-10-97 DRAWN BY: JLR CHECKED BY: JLR APPR: JLR DATE: 01-10-98	