

Instrument #: 2016-0896
 04/06/2016 10:10:42 AM Total Pages: 1
 ZSC SECTION CORNER CERTIFICATE
 Recording Fee: \$7.00 Transfer Tax: \$0
 Sheri L. Jones, Recorder, Jones County Iowa



PREPARED BY
 STEPHEN MICHAEL BRAIN, BRAIN ENGINEERING, INC., 1540 MIDLAND COURT NE, CEDAR RAPIDS, IOWA PH. (319) 294-9424

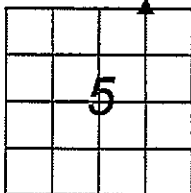
UNITED STATES PUBLIC LAND SURVEY CORNER CERTIFICATE

LAND SURVEY MONUMENTS SITUATED IN SECTION 5, TOWNSHIP 83 NORTH
 RANGE 4 WEST OF THE 5TH P.M., JONES COUNTY, IOWA.

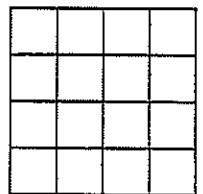
NO SCALE



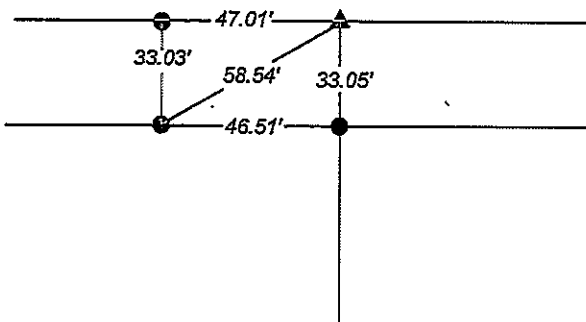
NE CORNER NW FRL 1/4 NW FRL 1/4



NO SCALE



70TH STREET



NOTE:
 ALL TIES
 SET 1/2" REBAR WITH
 YELLOW PLASTIC CAP #9647

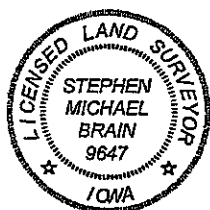
PREVIOUSLY RECORDED IN BOOK _____ PAGE _____

MONUMENT DESCRIPTION AND HOW ESTABLISHED _____

SET 1/2" REBAR WITH YELLOW PLASTIC CAP #9647 AT THE MIDPOINT ON THE LINE BETWEEN THE NW CORNER AND THE NORTH 1/2 CORNER OF SECTION 5, TOWNSHIP 83 NORTH, RANGE 4 WEST. THE NW CORNER AND THE N 1/2 CORNER ARE MONUMENTED AND HAVE CURRENT TIES RECORDED

PREVIOUSLY RECORDED IN BOOK _____ PAGE _____

MONUMENT DESCRIPTION AND HOW ESTABLISHED _____



I hereby certify that this land surveying document and the related survey work was performed by me or under my direct personal supervision and that I am a duly licensed Land Surveyor under the laws of the State of Iowa.

Signed *Stephen Michael Brain* Date 4/4/16

Stephen Michael Brain, L.S.
 My License Renewal Date is December 31, 2016
 License Number 9647
 Pages or sheets covered by this seal: 1/1

- A. THERE IS NO CERTIFICATE FOR THE CORNER ON FILE WITH THE RECORDER OF THE COUNTY IN WHICH THE CORNER IS LOCATED
- B. THE SURVEYOR IN RESPONSIBLE CHARGE OF THE LAND SURVEYING ACCEPTS A CORNER POSITION WHICH DIFFERS FROM THAT SHOWN IN THE PUBLIC RECORDS OF THE COUNTY IN WHICH THE CORNER IS LOCATED.
- C. THE CORNER MONUMENT IS REPLACED OR MODIFIED IN ANY WAY.
- D. THE REFERENCE TIES REFERRED TO IN AN EXISTING PUBLIC RECORD ARE NOT CORRECT.

CORNERS TO BE INDEXED

CORNER	SECTION	TOWNSHIP	RANGE
NE CORNER	5	T83N	R4W
NW FRL 1/4 NW FRL 1/4			

BRAIN ENGINEERING, INC.
 1540 MIDLAND COURT NE
 CEDAR RAPIDS, IOWA 52402
 (319) 294-9424

501915-10

PREPARED BY HALL & HALL ENGINEERS, INC. 209 29TH STREET N.E. CEDAR RAPIDS, IOWA 52402 (319) 362-9548

SECTION CORNER CERTIFICATE

OF
 LAND SURVEY MONUMENTS SITUATED IN SECTION 5, TOWNSHIP 83 NORTH,
 RANGE 4 WEST, OF THE FIFTH PRINCIPAL MERIDIAN, JONES COUNTY, IOWA.

PREVIOUSLY RECORDED IN BOOK AT PAGE

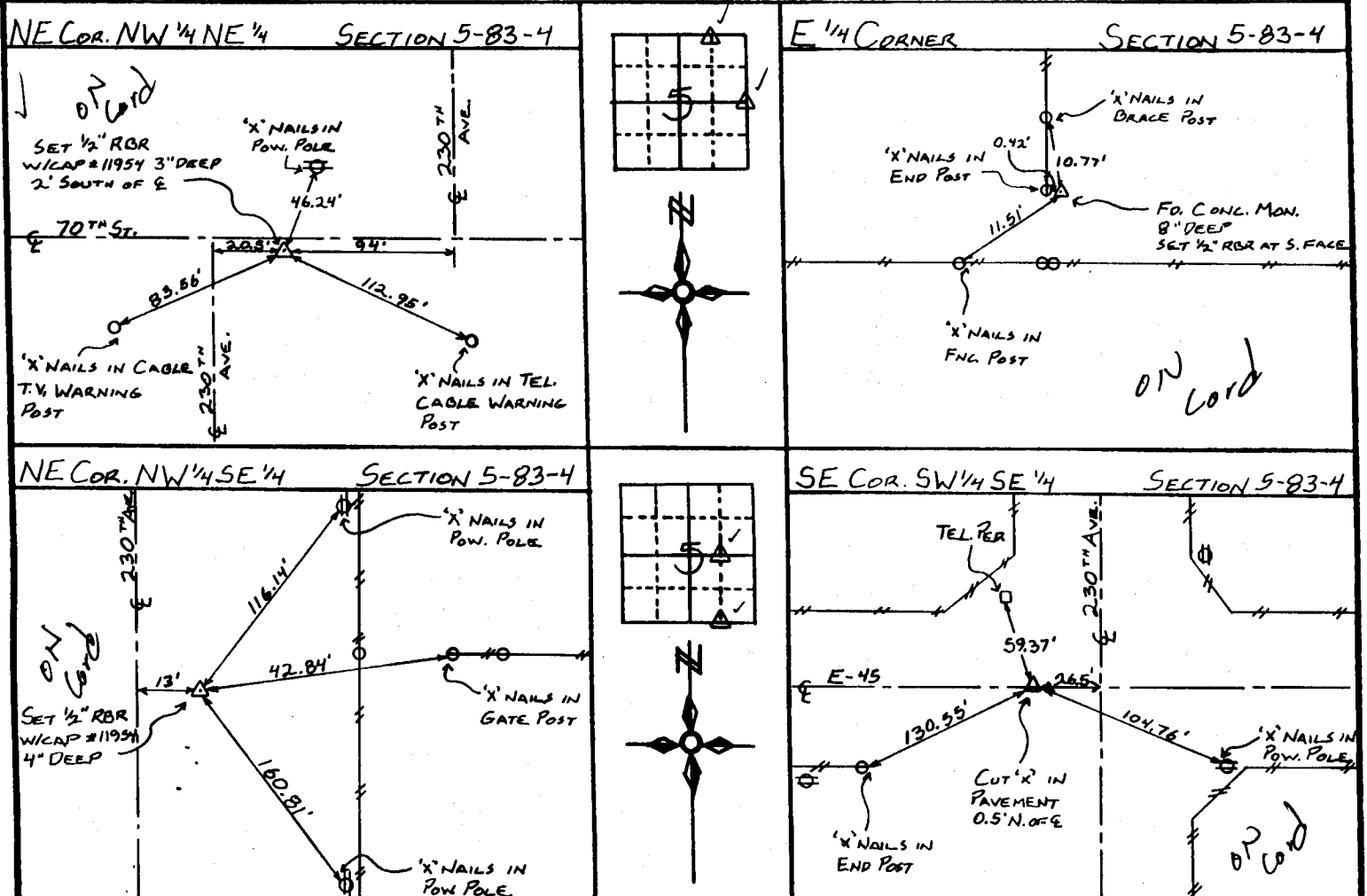
REASON FOR PREPARING CERTIFICATE:

- A) THERE IS NO CERTIFICATE FOR THE CORNER ON FILE WITH THE RECORDER OF THE COUNTY IN WHICH THE CORNER IS LOCATED.
- B) CORNER POSITION DIFFERS FROM THAT SHOWN IN THE PUBLIC RECORDS OF THE COUNTY IN WHICH THE CORNER IS LOCATED.
- C) THE CORNER MONUMENT HAS BEEN REPLACED OR MODIFIED
- D) THE REFERENCE TIES REFERRED TO IN AN EXISTING PUBLIC RECORD ARE INCORRECT

MONUMENT DESCRIPTION AND REMARKS:

NE COR. NW 1/4 NE 1/4 SEC. 5-83-4: SET 1/2" REBAR W/CAP #11954 3" DEEP, 2' SOUTH OF E 70TH ST.
 E 1/4 COR. SEC. 5-83-4: FOUND CONC. MON. 8" DEEP, SET 1/2" REBAR AT SOUTH FACE, MON. 0.5' EAST OF N-S FENCE & 3' NORTH OF E-W FENCE.
 NE COR. NW 1/4 SE 1/4 SEC. 5-83-4: SET 1/2" REBAR W/CAP #11954 4" DEEP, 13' EAST OF E 230TH AVE. & 7.5' SOUTH OF FENCE E.
 SE COR. SW 1/4 SE 1/4 SEC. 5-83-4: SET CUT 'X' IN PAVEMENT, 0.5' NORTH OF E E-45

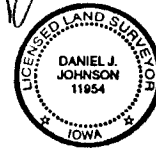
RECOVERY TIE DRAWING



I, DANIEL J. JOHNSON, - CERTIFY THAT THE CORNER LOCATION(S) SHOWN ON THIS RECORD WERE DETERMINED BY ME OR UNDER MY DIRECTION AND CONTROL AND THAT THIS U S PUBLIC LAND SURVEY MONUMENT RECORD IS CORRECT AND COMPLETE TO THE BEST OF MY KNOWLEDGE AND BELIEF

Daniel J. Johnson 10-27-97
 DANIEL J. JOHNSON L.S. NO. 11954 DATE

Greenfield



83405d-102797
 83405o-102797
 83405n-102797
 83408d-102797

MY LICENSE RENEWAL DATE IS DECEMBER 31, 1998

0 1/2" = 1' SCALE ▲ GOVERNMENT CORNER ● PROPERTY CORNER FOUND ○ 1/2" X 3/4" W/ L.S. CAP SET - - - EXISTING FENCE LINE ——— PROPERTY LINE	SHEET NO. <u> </u> U.S. PUBLIC LAND SURVEY RECORD	HALL AND HALL ENGINEERS, INC. 209 29TH STREET N.E. CEDAR RAPIDS, IOWA 52402 (319) 362-9548
	PROJECT NO. <u> </u> ARMSTRONG - BOUNDARY	