

PREPARED BY HALL & HALL ENGINEERS, INC. 209 29TH STREET N.E. CEDAR RAPIDS, IOWA 52402 (319) 362-9548

SECTION CORNER CERTIFICATE

OF  
 LAND SURVEY MONUMENTS SITUATED IN SECTION 5, TOWNSHIP 03 NORTH,  
 RANGE 4 WEST, OF THE FIFTH PRINCIPAL MERIDIAN, JONES, COUNTY, IOWA.

PREVIOUSLY RECORDED IN BOOK        AT PAGE       

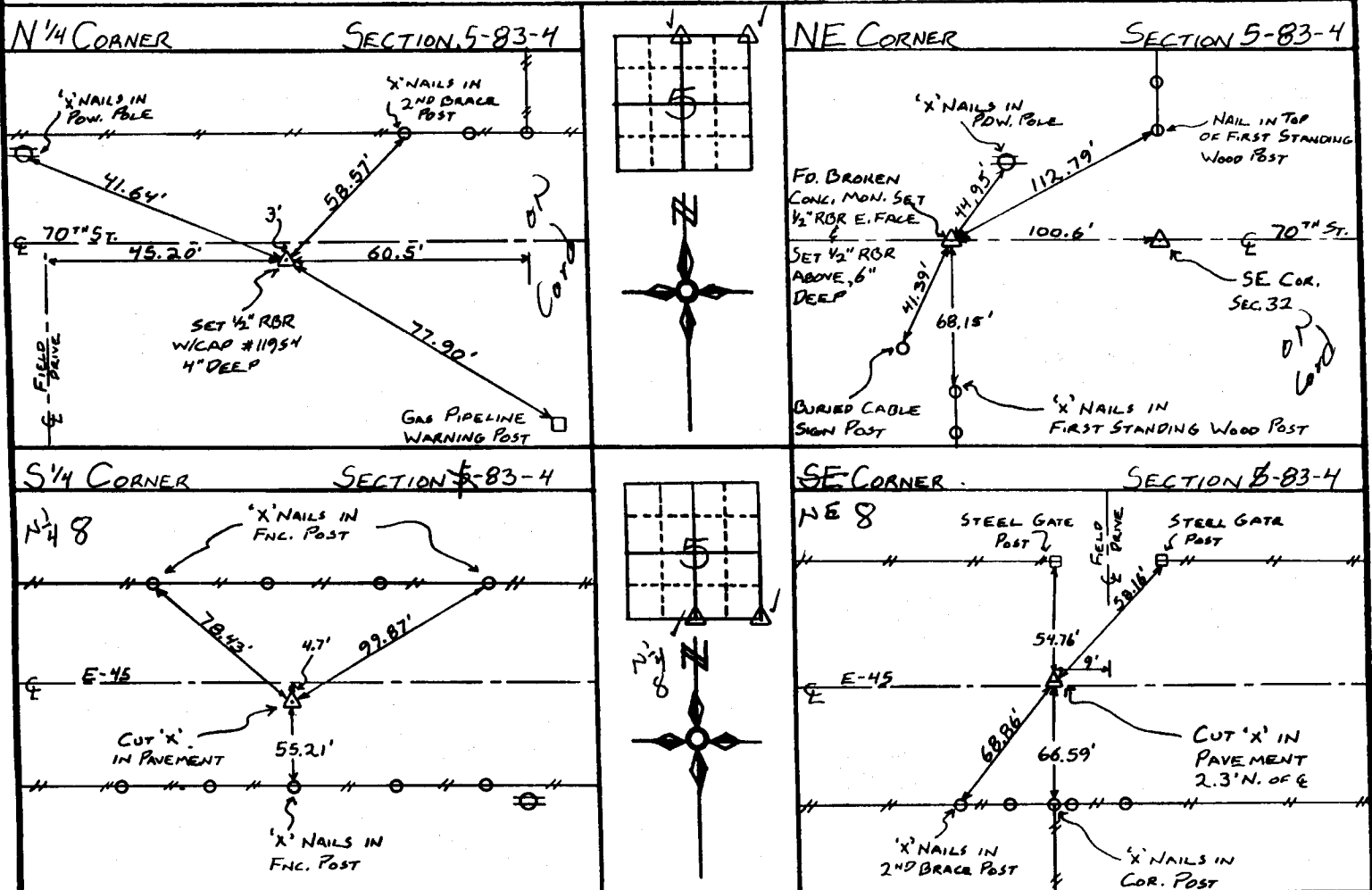
REASON FOR PREPARING CERTIFICATE:

- A) THERE IS NO CERTIFICATE FOR THE CORNER ON FILE WITH THE RECORDER OF THE COUNTY IN WHICH THE CORNER IS LOCATED.
- B) CORNER POSITION DIFFERS FROM THAT SHOWN IN THE PUBLIC RECORDS OF THE COUNTY IN WHICH THE CORNER IS LOCATED.
- C) THE CORNER MONUMENT HAS BEEN REPLACED OR MODIFIED
- D) THE REFERENCE TIES REFERRED TO IN AN EXISTING PUBLIC RECORD ARE INCORRECT

MONUMENT DESCRIPTION AND REMARKS:

- N<sup>1</sup>/<sub>4</sub> COR. SEC. 5-83-4: SET 1/2" REBAR W/ CAP #11954 4" DEEP, 3' SOUTH OF E 70<sup>TH</sup> ST.
- NE COR. SEC. 5-83-4: FOUND BROKEN CONG. MONUMENT SET 1/2" REBAR AT EAST FACE & 1/2" REBAR ABOVE 6" DEEP
- S<sup>1</sup>/<sub>4</sub> COR. SEC. 5-83-4: CUT 'X' IN PAVEMENT 4.7' SOUTH OF E E-45
- SE COR. SEC. 5-83-4: CUT 'X' IN PAVEMENT 2.3' NORTH OF E E-45

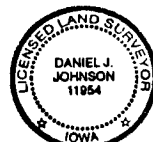
RECOVERY TIE DRAWING



I, DANIEL J. JOHNSON, - CERTIFY THAT THE CORNER LOCATION(S) SHOWN ON THIS RECORD WERE DETERMINED BY ME OR UNDER MY DIRECTION AND CONTROL AND THAT THIS U S PUBLIC LAND SURVEY MONUMENT RECORD IS CORRECT AND COMPLETE TO THE BEST OF MY KNOWLEDGE AND BELIEF.

*Daniel J. Johnson* 10-27-97  
 DANIEL J. JOHNSON L.S. NO. 11954 DATE

*Greenfield*



83405e-102797  
 83405e-102797  
 83408e-102797 83408e-102797

MY LICENSE RENEWAL DATE IS DECEMBER 31, 1998

LEGEND: Δ GOVERNMENT CORNER ● PROPERTY CORNER FOUND ○ 1/2" X 30" W/ L.S. CAP SET --- EXISTING FENCE LINE ——— PROPERTY LINE	SHEET TITLE: U.S. PUBLIC LAND SURVEY RECORD PROJECT TITLE: ARMSTRONG - BOUNDARY	HALL AND HALL ENGINEERS, INC. 209 29TH STREET N.E. CEDAR RAPIDS, IOWA 52402 (319) 362-9548
	SCALE: 1" = 100' DATE: 11-10-97 DRAWN BY: JLR CHECKED BY: JLR APPR: JLR DATE: 01-10-98	

# UNITED STATES PUBLIC LAND SURVEY CORNER CERTIFICATE

OF

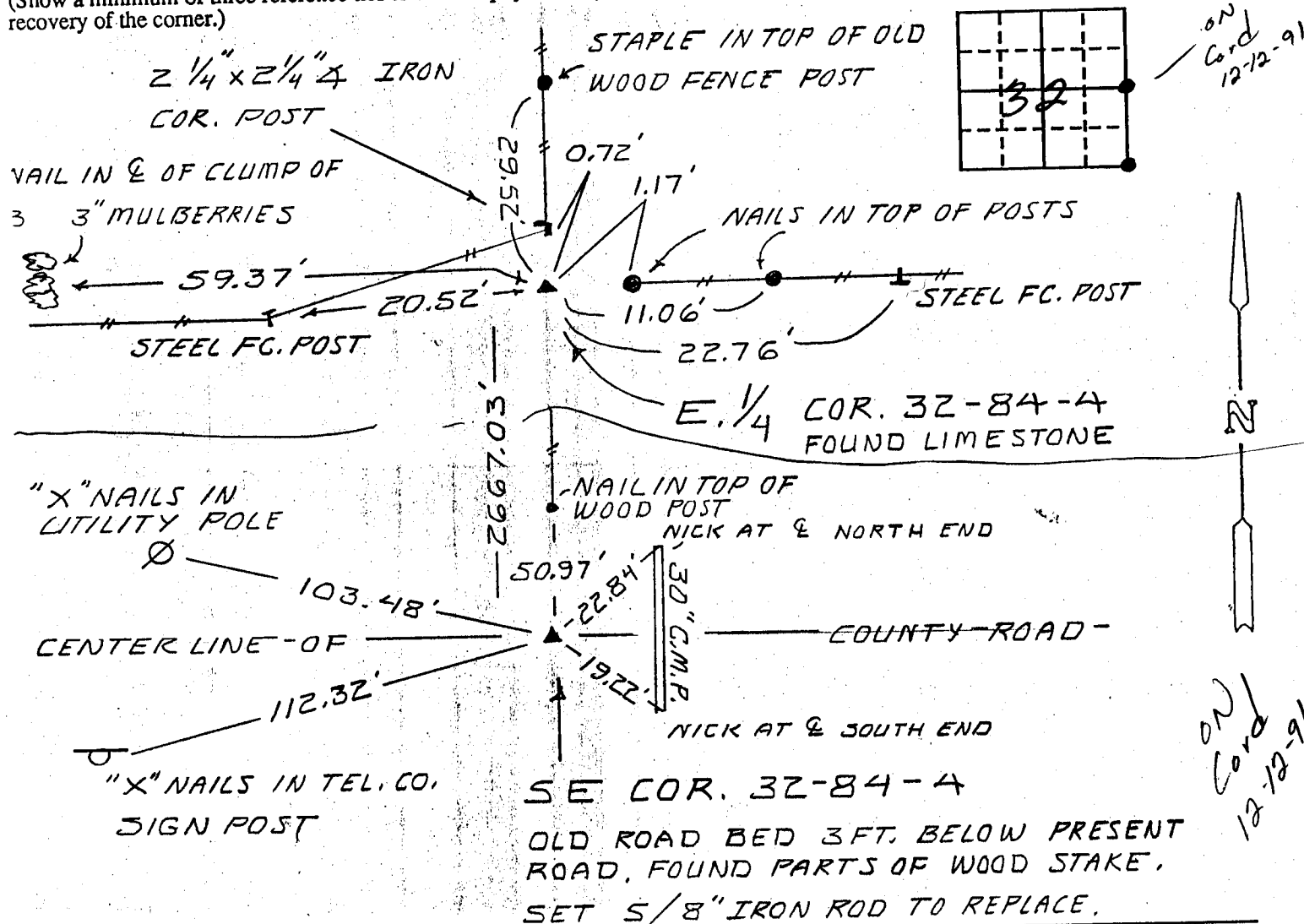
Land Survey Monuments situated in Section 32, Township 84 N, Range 4 W, of the Fifth Principal Meridian, JONES County, Iowa. Previously recorded in \_\_\_\_\_ in County Recorder's Office.

(Show reason for preparing this certificate, the evidence and detailed procedures used in establishing the corner positions and monumentation found or placed.)

Monument Description and Remarks: NO CERTIFICATES WERE OF RECORD.  
EAST 1/4 COR. 32-84-4: FOUND WEDGE SHAPED LIMESTONE,  
3" X 4" AT THE TOP END, 3 FT. BELOW THE SURFACE OF THE GROUND.  
SOUTHEAST COR. 32-84-4: SET 5/8" IRON ROD TO REPLACE  
PARTS OF WOODEN STAKE FOUND IN LINE OF BOUNDARY LINE  
FENCE TO THE NORTH & IN CENTER LINE OF COUNTY ROAD.

### PLAN - VIEW

(Show a minimum of three reference ties to durable physical objects, relevant monuments and physical conditions that will enable recovery of the corner.)



I hereby certify that the survey work was completed and this certificate was prepared by me or under my direct personal supervision and that I am a duly registered land surveyor under the laws of the state of Iowa.

Signature: Donald L. Bunting  
Name typed or printed: DONALD L. BUNTING L.S.  
Date: DEC. 9, 1991 Reg. No. 7810

Corners	List Corners to be Indexed Section	Twp	Range
E. 1/4 COR.	32	84	4
SE COR.	32	84	4 ?

check BK #291

SEAL

