

Jones County Iowa
 Marie Krutzfield, Recorder
Fee Book 2010 1662
 06/23/2010 @1105AM
 ZSC SEC COR CBRT
 Book: Page: # Pages: 1
 Total Fees: \$9.00

PREPARED BY
 STEPHEN MICHAEL BRAIN, BRAIN ENGINEERING, INC., 1540 MIDLAND COURT NE, CEDAR RAPIDS, IOWA PH. (319) 294-9424

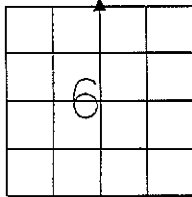
UNITED STATES PUBLIC LAND SURVEY CORNER CERTIFICATE

LAND SURVEY MONUMENTS SITUATED IN SECTION 6, TOWNSHIP 83 NORTH
 RANGE 4 WEST OF THE 5TH P.M., JONES COUNTY, IOWA.

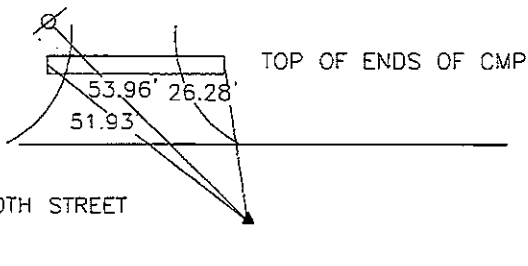
NO SCALE



N 1/4 CORNER



SET X NAILS
 ON POWER POLE



CMP - CORRUGATED METAL PIPE

PREVIOUSLY RECORDED IN FEEBOOK 2007 0999

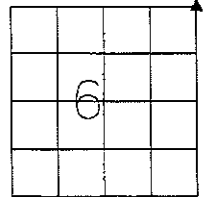
MONUMENT DESCRIPTION AND HOW ESTABLISHED:

FOUND 1/2" REBAR IN CENTERLINE OF STREET, 2" DEEP.
 PIN CHECKED WITH ADJACENT SURVEY. DRIVEWAY
 CULVERT HAD BEEN REPLACED SINCE PREVIOUSLY
 RECORDED TIES.

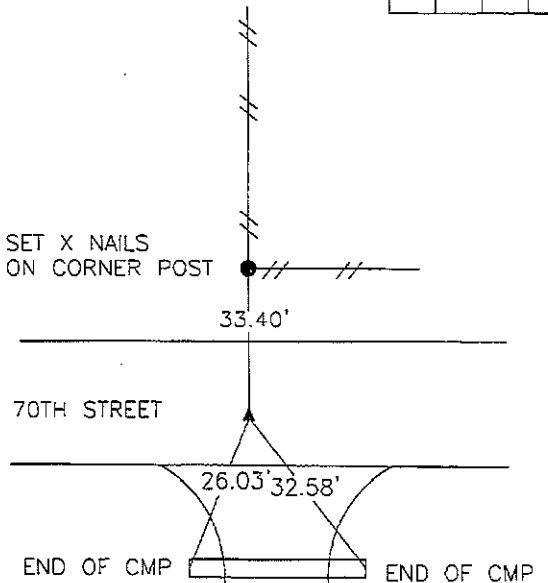
NO SCALE



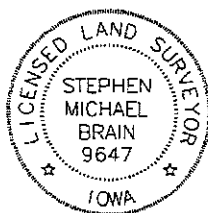
NE CORNER



SET X NAILS
 ON CORNER POST



FOUND 3/8" REBAR 8" DEEP IN CENTERLINE OF ROAD AND
 IN LINE WITH FENCE TO NORTH



I hereby certify that this land surveying document
 and the related survey work was performed by me
 or under my direct personal supervision and that
 I am a duly licensed Land Surveyor under the laws
 of the State of Iowa.

Signed *Stephen Michael Brain* Date *6/21/10*

Stephen Michael Brain, L.S.
 My License Renewal Date Is December 31, 2010
 License Number 9647
 Pages or sheets covered by this seal: 1/1

- A. THERE IS NO CERTIFICATE FOR THE CORNER ON FILE WITH THE RECORDER OF THE COUNTY IN WHICH THE CORNER IS LOCATED
- B. THE SURVEYOR IN RESPONSIBLE CHARGE OF THE LAND SURVEYING ACCEPTS A CORNER POSITION WHICH DIFFERS FROM THAT SHOWN IN THE PUBLIC RECORDS OF THE COUNTY IN WHICH THE CORNER IS LOCATED.
- C. THE CORNER MONUMENT IS REPLACED OR MODIFIED IN ANY WAY.
- D. THE REFERENCE TIES REFERRED TO IN AN EXISTING PUBLIC RECORD ARE NOT CORRECT.

CORNERS TO BE INDEXED

CORNER	SECTION	TOWNSHIP	RANGE
NE CORNER	6	T83N	R4 W
N 1/4 CORNER	6	T83N	R4 W

BRAIN ENGINEERING, INC.

1540 MIDLAND COURT NE
 CEDAR RAPIDS, IOWA 52402
 (319) 294-9424

284910-50
 1505