

2005 3157

FILED
RECORDERS OFFICE
JONES COUNTY IOWA

05 SEP -6 PM 12:26

MARIE KRUTZFIELD
RECORDER 7.00Pd

SLSI 9-90

Prepared By: Leo D. Wooder, L.S. #14676 Anderson-Bogert Engineers & Surveyors, Inc.
4001 River Ridge Dr. N.E. Cedar Rapids, Iowa 52402 Phone: (319) 377-4629

UNITED STATES PUBLIC LAND SURVEY CORNER CERTIFICATE
OF

Land Survey Monuments situated in Section 7, Township 83N, Range 4W, of the Fifth Principal Meridian, Jones County, Iowa.
Previously recorded in Not Previously Recorded in County Recorders Office.
(book, page, document number, ect.)

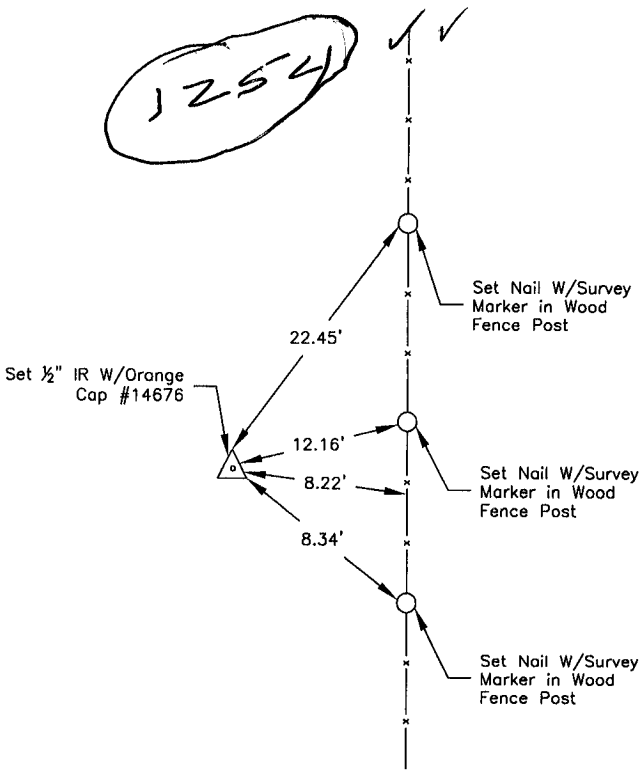
(Show reason for preparing this certificate, the evidence and detailed procedures used in establishing the corner positions and monumentation found or placed.)

Monument Description and Remarks: Center Sec 7 Set 1/2" Iron Rod W/Orange Cap #14676 on Line Between E 1/4 Cor 7 + W 1/4 Cor 7 and on Fence Line to South. S 1/4 Cor 7, Set 1/2" Iron Rod W/Orange Cap #14676 on Line Between SW Cor 7 + SE Cor 7 Approximately 8.6' West of Line of Old Fence North and South (Ties from WPA Survey 1936+1937). Corners were Set for Survey Recorded as Instrument #20053039 in the Jones County Recorders Office.

PLAN - VIEW

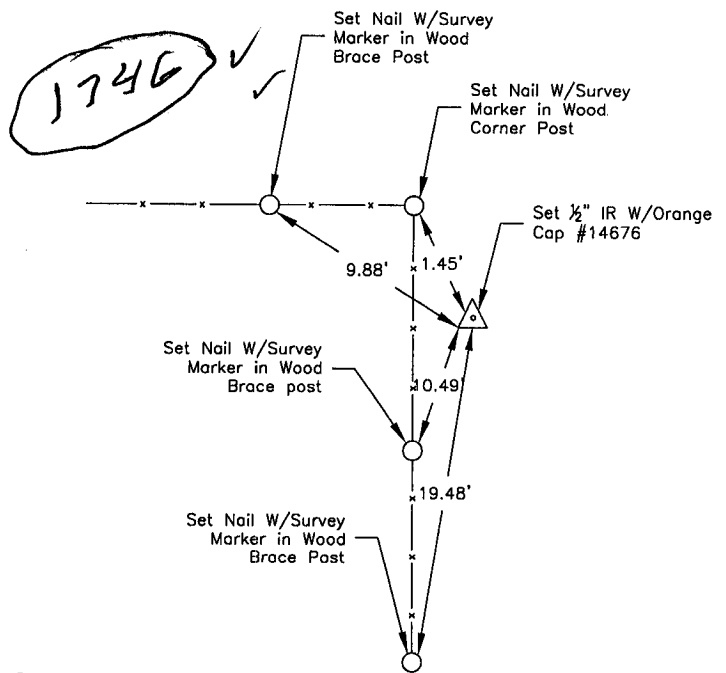
(Show a minimum of three reference ties to durable physical objects, relevant monuments and physical conditions that will enable recovery of the corner.)

8341Bc-091905.tie



S1/4 Cor Sec 7-83-4

83407m-091905.tie



Center Sec 7-83-4

I hereby certify that this land surveying document was prepared and the related survey work was performed by me or under my direct personal supervision and that I am a duly licensed Land Surveyor under the laws of the State of Iowa

Signature: *[Handwritten Signature]* Date: 7/21/2005

List Corners to be Indexed

Corners	Section	Twp	Range
SK Cor	7	83	4