

2000 2908

FILED  
RECORDERS OFFICE  
JONES COUNTY IOWA

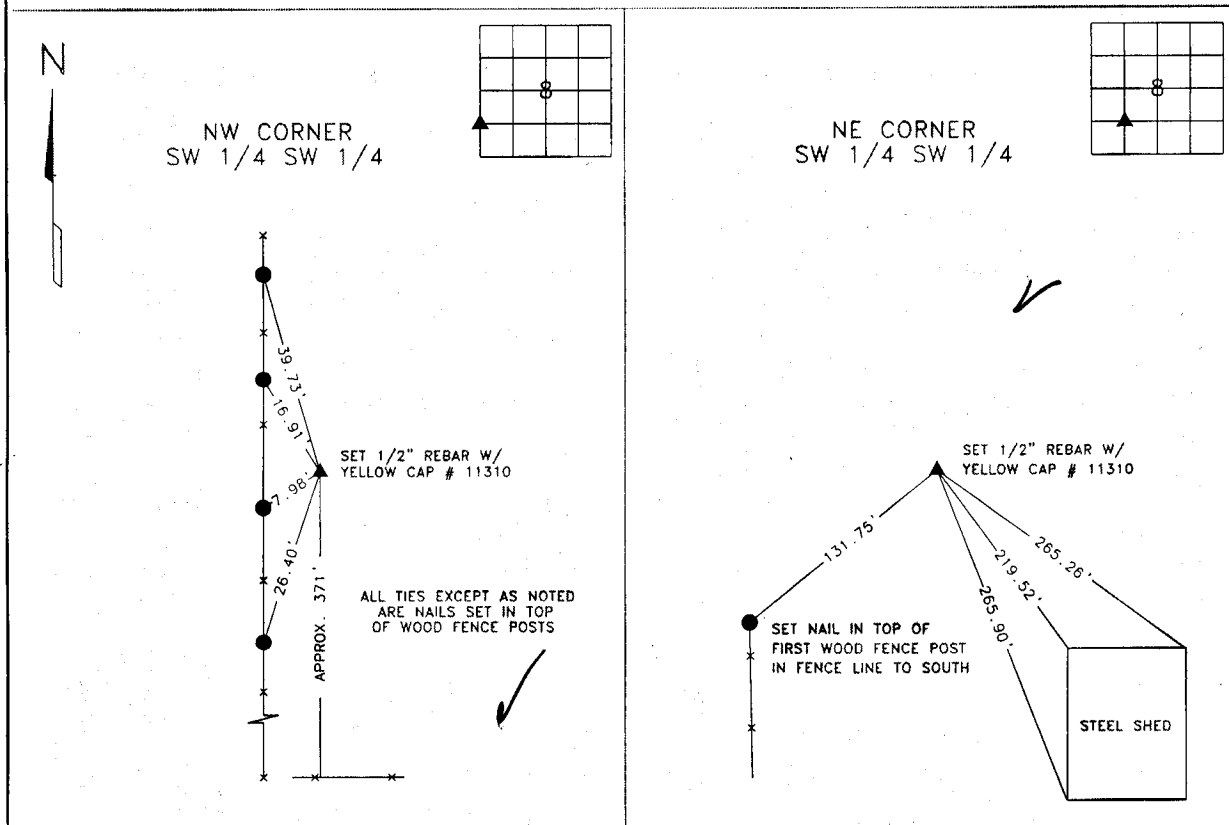
00 SEP 22 PM 3:02

MARIE KRUTZFIELD  
RECORDER 6.00 pd

CLARENCE J. WALTON, LS # 11310, WALTON LAND SURVEYING, P.C., 2213 LAUREN DR. SW, CEDAR RAPIDS, IOWA 52404, (319) 363-4271

UNITED STATES PUBLIC LAND  
SURVEY CORNER CERTIFICATE

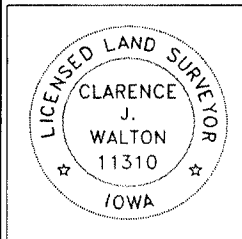
LAND SURVEY MONUMENTS SITUATED IN SECTION 8, TOWNSHIP 83 NORTH, RANGE 4 WEST  
OF THE 5TH PRINCIPAL MERIDIAN, JONES COUNTY, IOWA



**MONUMENT DESCRIPTION AND REMARKS**  
 SET 1/2" REBAR W/ YELLOW CAP # 11310 AT MID-POINT BETWEEN SW CORNER AND W 1/4 CORNER OF SECTION 8-T83N-R4W

**MONUMENT DESCRIPTION AND REMARKS**  
 SET 1/2" REBAR W/ YELLOW CAP # 11310. RAN LINES FROM E & W 1/4 CORNERS AND N & S 1/4 CORNERS. ESTABLISHED CORNER BY INTERSECTING LINES BETWEEN MIDPOINTS OF SW 1/4 AS ESTABLISHED.

NOTE: ALL MEASUREMENTS IN FEET AND DECIMALS THEREOF.



I hereby certify that this land surveying document and the related survey work was performed by me or under my direct personal supervision and that I am a duly licensed Land Surveyor under the laws of the State of Iowa.  
 Signed: *Clarence J. Walton* Date: 9/22/00  
 Clarence J. Walton, L.S.  
 My License Renewal Date is December 31, 2001  
 License Number 11310  
 Pages or sheets covered by this seal: 1 of 1

CORNERS TO BE INDEXED			
CORNERS	SECTION	TWP	RANGE
NW SW 1/4 SW 1/4	8	83N	4W
NE SW 1/4 SW 1/4	8	83N	4W

PROJECT No: 10110-4S	Title: UNITED STATES PUBLIC LAND SURVEY CORNER CERTIFICATE	WALTON LAND SURVEYING, P.C. 2213 LAUREN DRIVE SW CEDAR RAPIDS, IOWA 52404 (319) 363-4271	Drawn: CJW	Book: 3
			9/22/00	Scale: NONE

83408g-092200  
83407+-092200